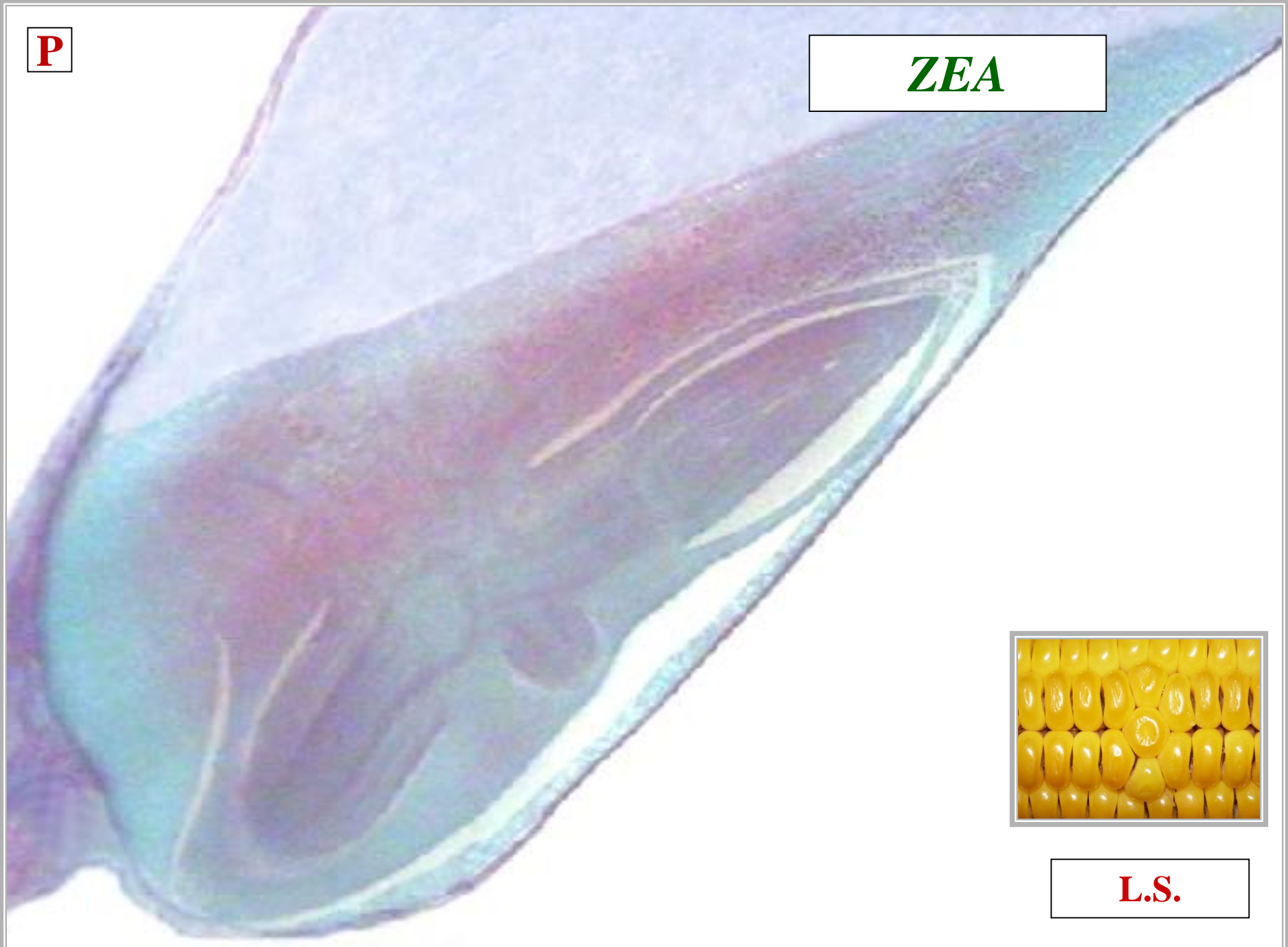


**P**

**ZEA**



**L.S.**

?

*ZEA*

PERICARP



**L.S.**

**E**

**ZEA**

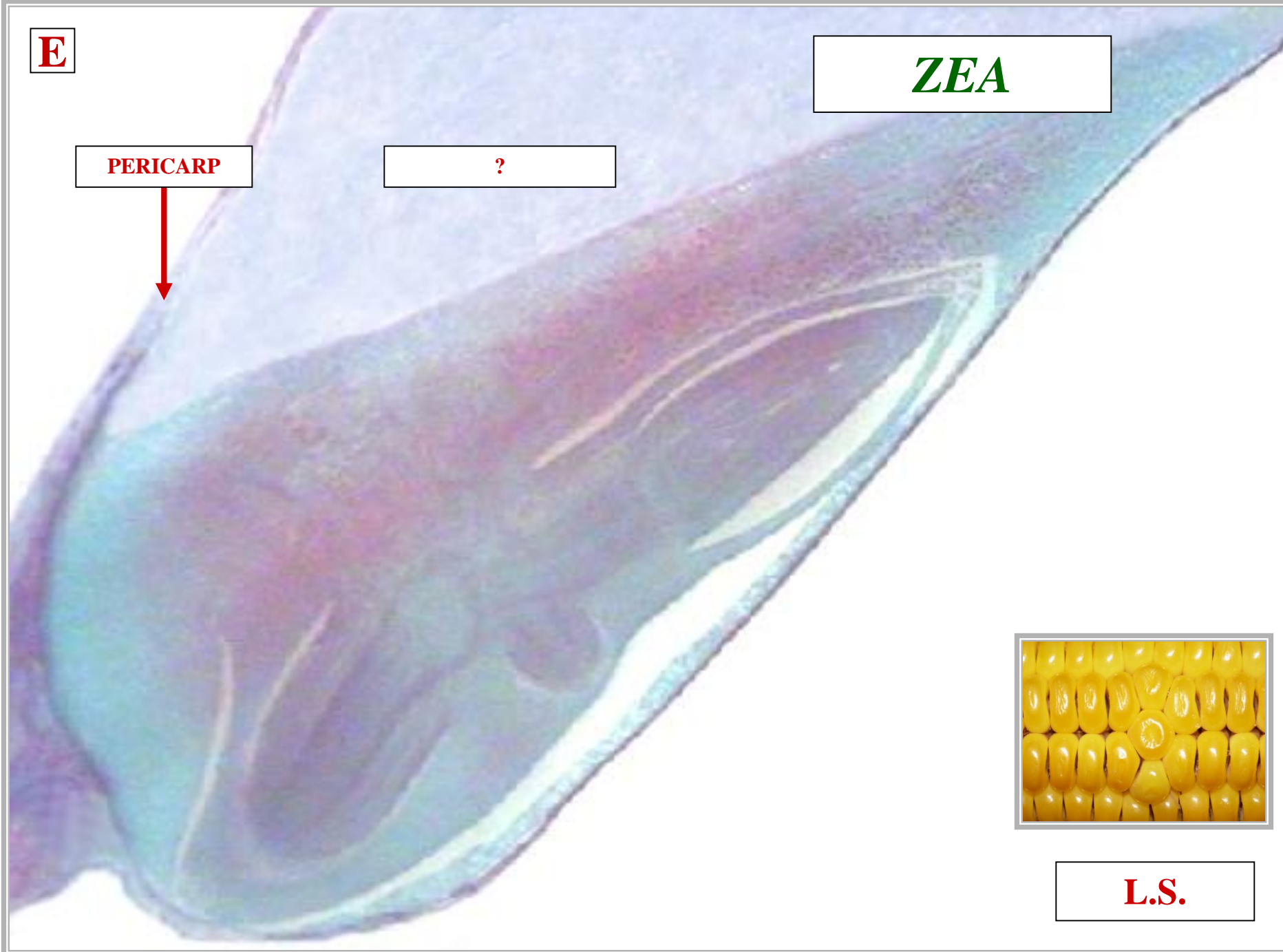
**PERICARP**



**?**



**L.S.**





**E**

**ZEA**

**PERICARP**

**ENDOSPERM**



**L.S.**



?

*ZEA*

PERICARP

ENDOSPERM

MATURE  
EMBRYO



L.S.

**S**

**ZEA**

**PERICARP**



**ENDOSPERM**

**?**



**L.S.**

**S**

**ZEA**

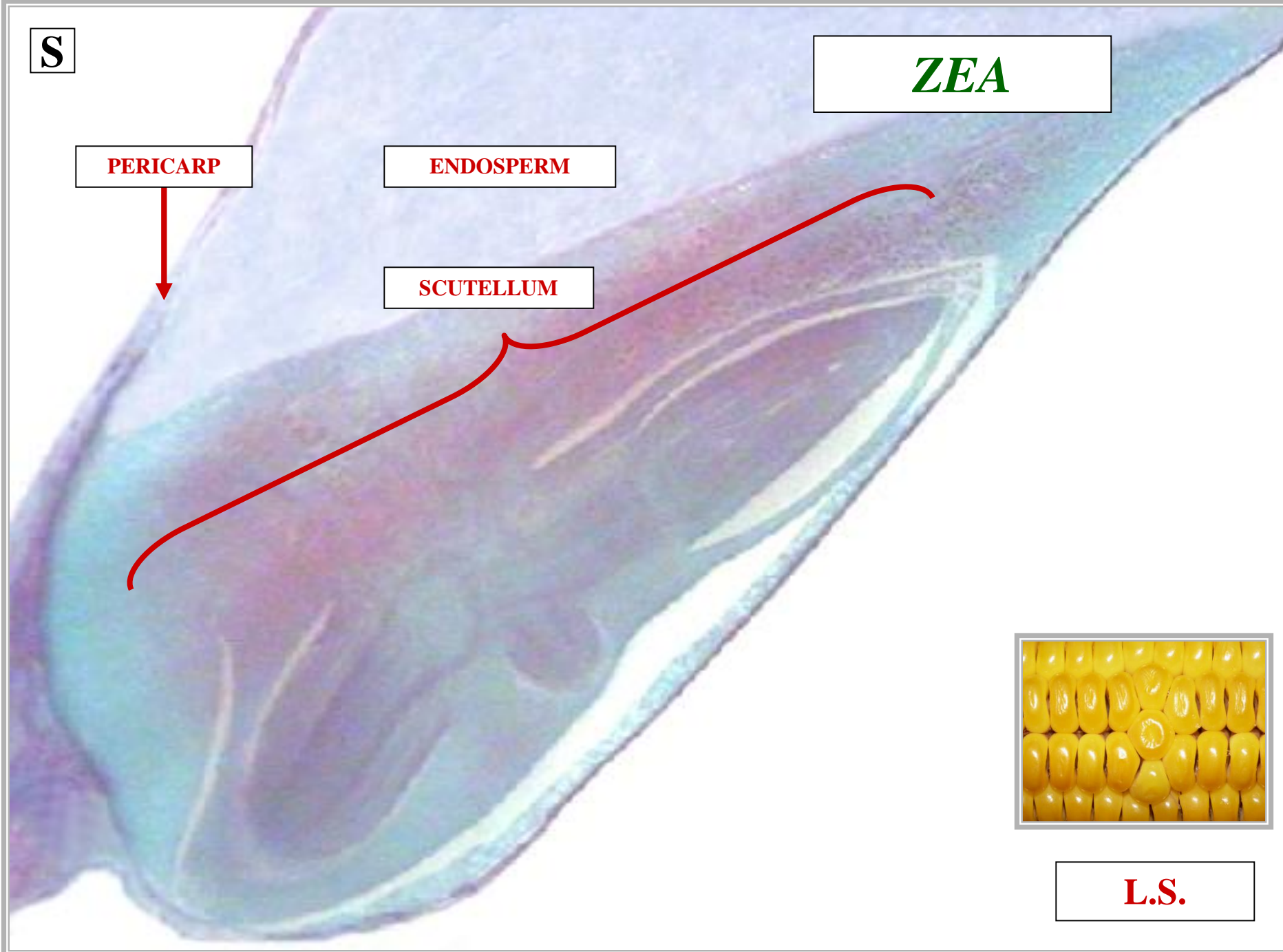
**PERICARP**

**ENDOSPERM**

**SCUTELLUM**



**L.S.**





**SCUTELLUM**



**ANGIOSPERM  
MONOCOT SEED**

**COTYLEDON  
ABSORBS  
ENDOSPERM**

**ANGIOSPERM  
MONOCOT SEED**

**C**

**ZEA**

**PERICARP**

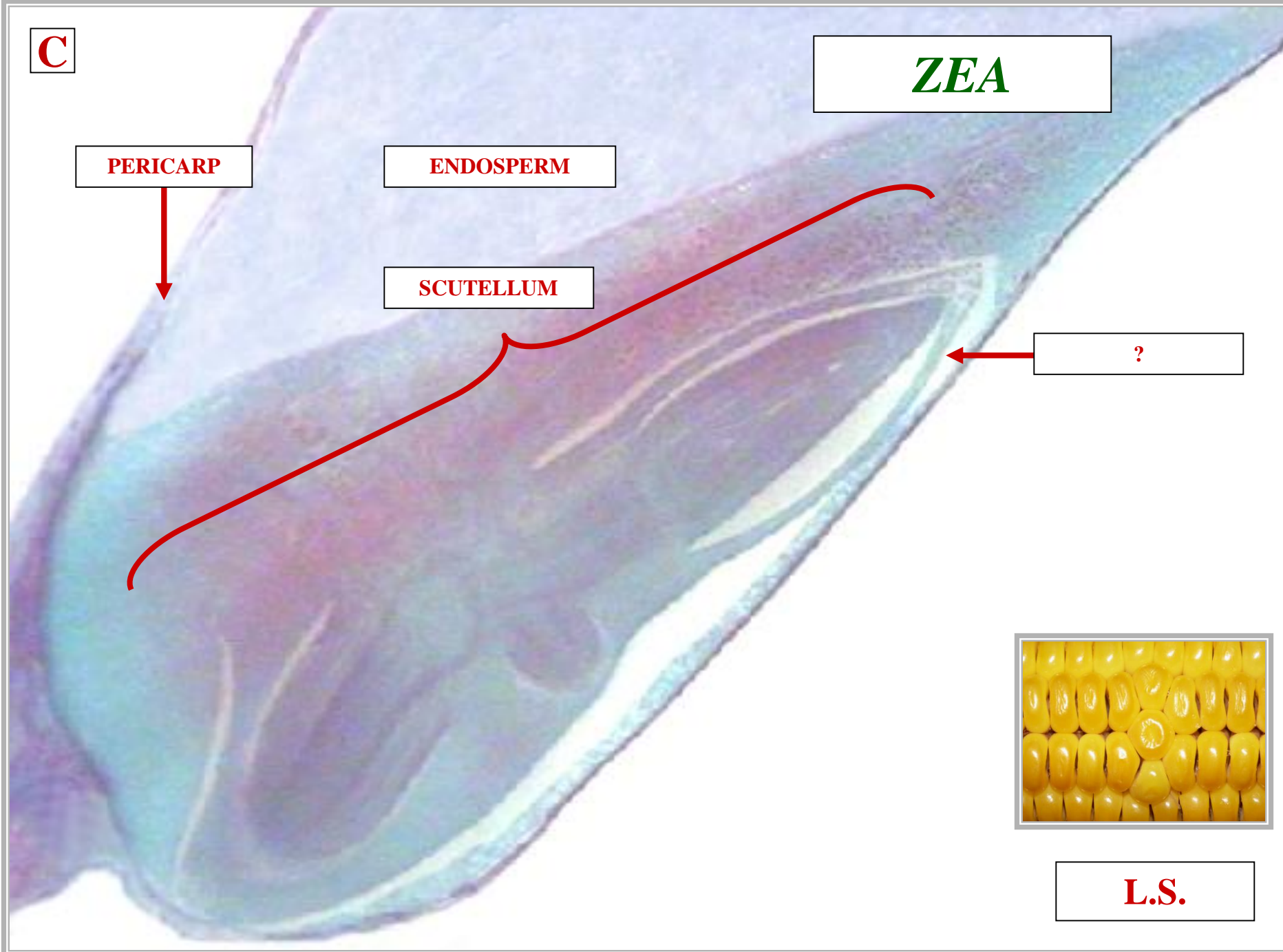
**ENDOSPERM**

**SCUTELLUM**

**?**



**L.S.**





**C**

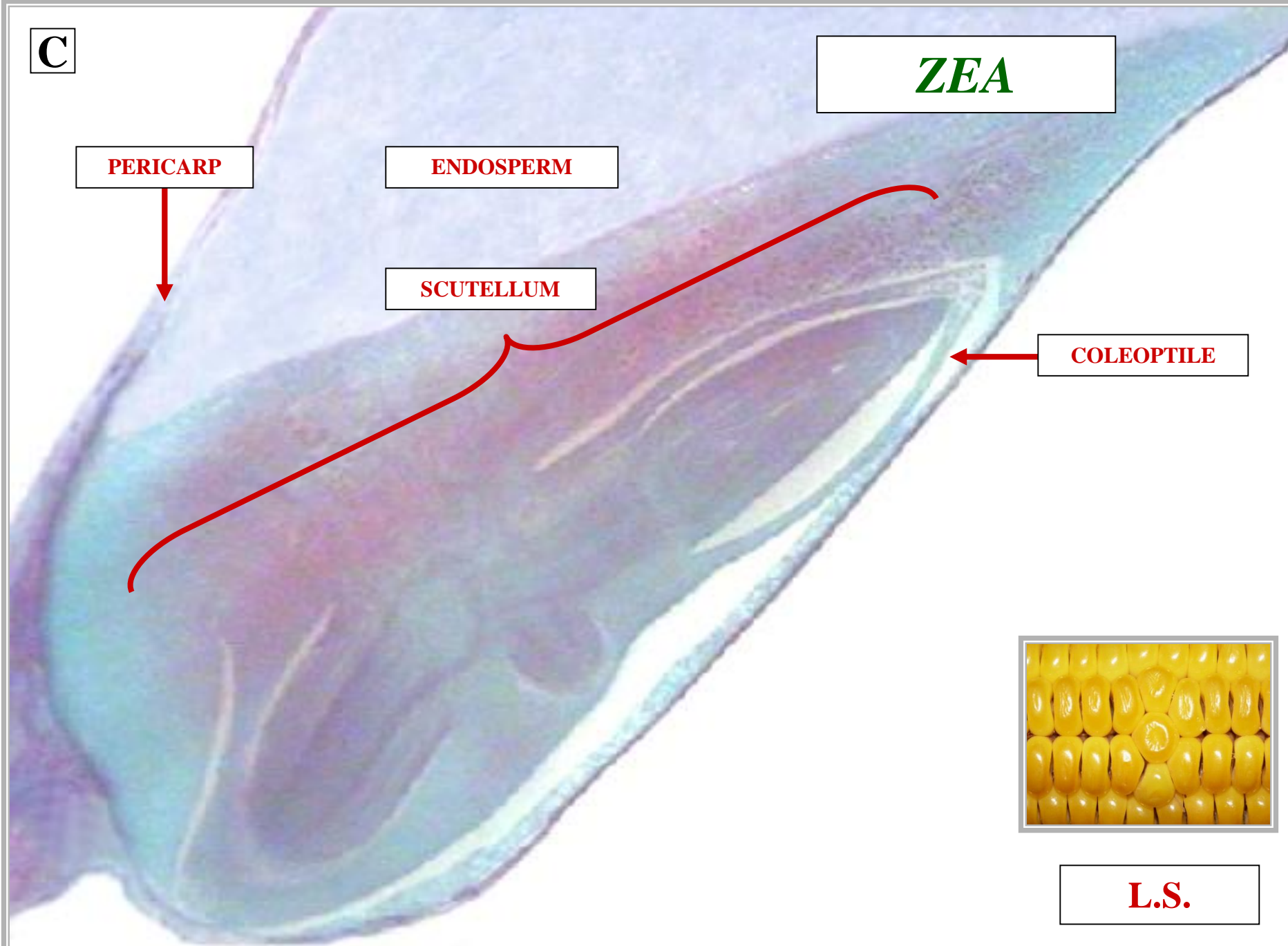
**ZEA**

**PERICARP**

**ENDOSPERM**

**SCUTELLUM**

**COLEOPTILE**



**L.S.**

**COLEOPTILE**



**ANGIOSPERM  
MONOCOT SEED**

**SHEATH  
PROTECTS  
PLUMULE**

**ANGIOSPERM  
MONOCOT SEED**



**P**

**ZEA**

**PERICARP**

**ENDOSPERM**

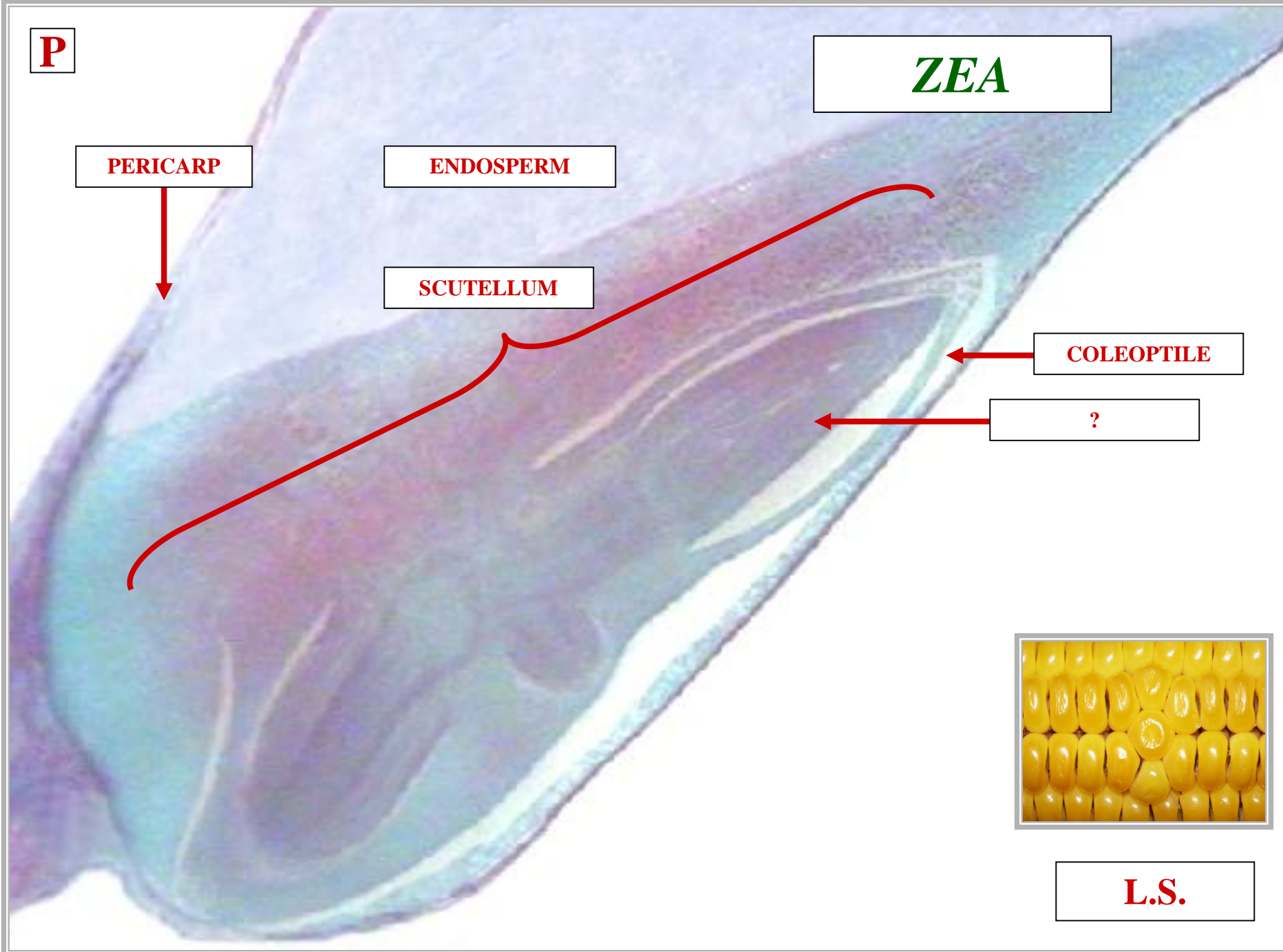
**SCUTELLUM**

**COLEOPTILE**

**?**



**L.S.**



**P**

**ZEA**

**PERICARP**

**ENDOSPERM**

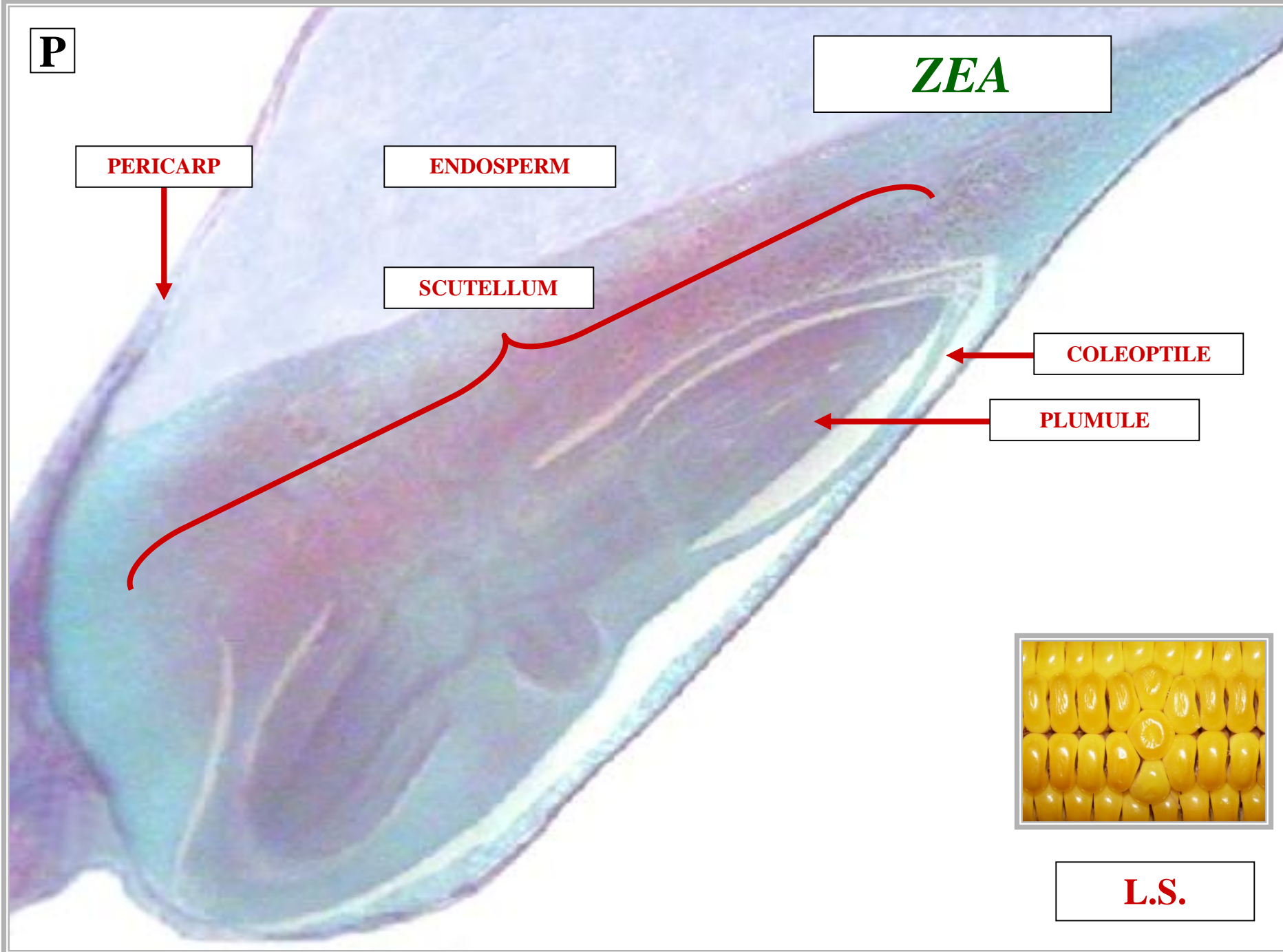
**SCUTELLUM**

**COLEOPTILE**

**PLUMULE**



**L.S.**



**PLUMULE**



**ANGIOSPERM  
MONOCOT SEED**

**EMBRYONIC  
SHOOT / STEM**

**ANGIOSPERM  
MONOCOT SEED**

**S**

**ZEA**

**PERICARP**

**ENDOSPERM**

**SCUTELLUM**

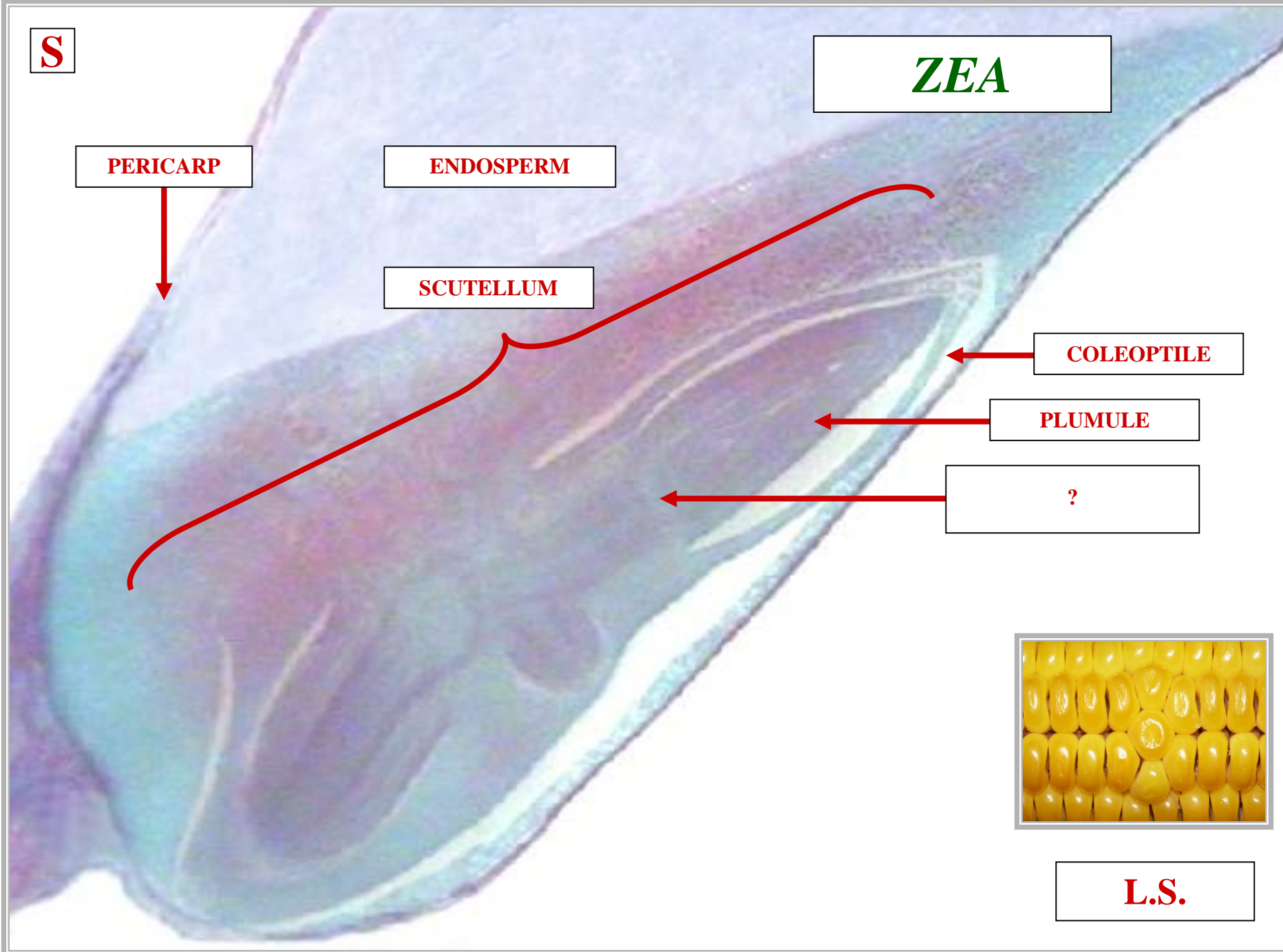
**COLEOPTILE**

**PLUMULE**

**?**



**L.S.**





?

*ZEA*

PERICARP

ENDOSPERM

SCUTELLUM

COLEOPTILE

PLUMULE

STEM  
APICAL MERISTEM



L.S.

**M**

**ZEA**

**PERICARP**

**ENDOSPERM**

**SCUTELLUM**

**COLEOPTILE**

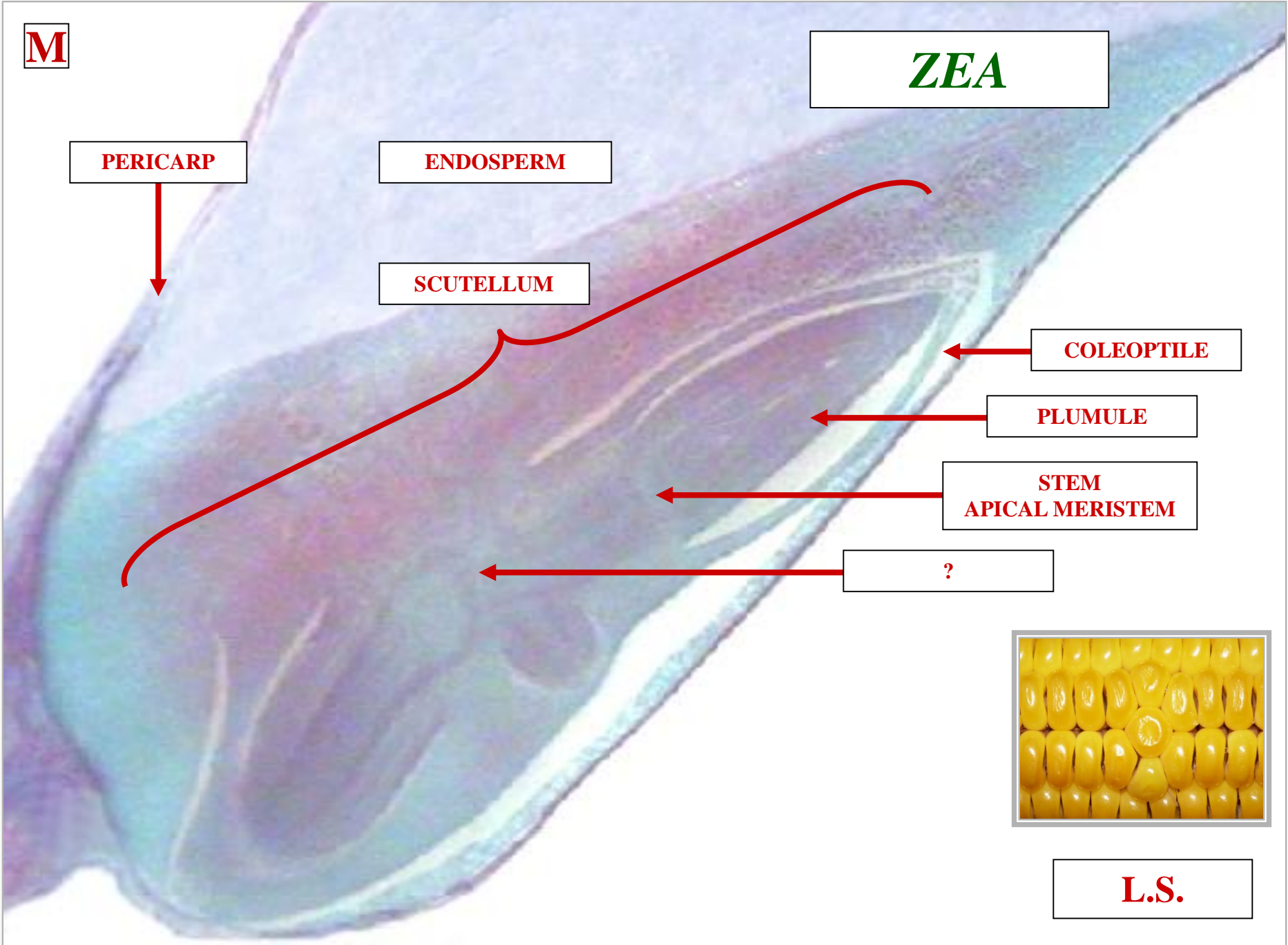
**PLUMULE**

**STEM  
APICAL MERISTEM**

**?**



**L.S.**



**M**

**ZEA**

**PERICARP**

**ENDOSPERM**

**SCUTELLUM**

**COLEOPTILE**

**PLUMULE**

**STEM  
APICAL MERISTEM**

**MESOCOTYL**



**L.S.**

**MESOCOTYL**



**ANGIOSPERM  
MONOCOT SEED**

**SCUTELLUM  
ATTACHMENT  
POINT TO EMBRYO**

**ANGIOSPERM  
MONOCOT SEED**



**R**

**ZEA**

**PERICARP**

**ENDOSPERM**

**SCUTELLUM**

**COLEOPTILE**

**PLUMULE**

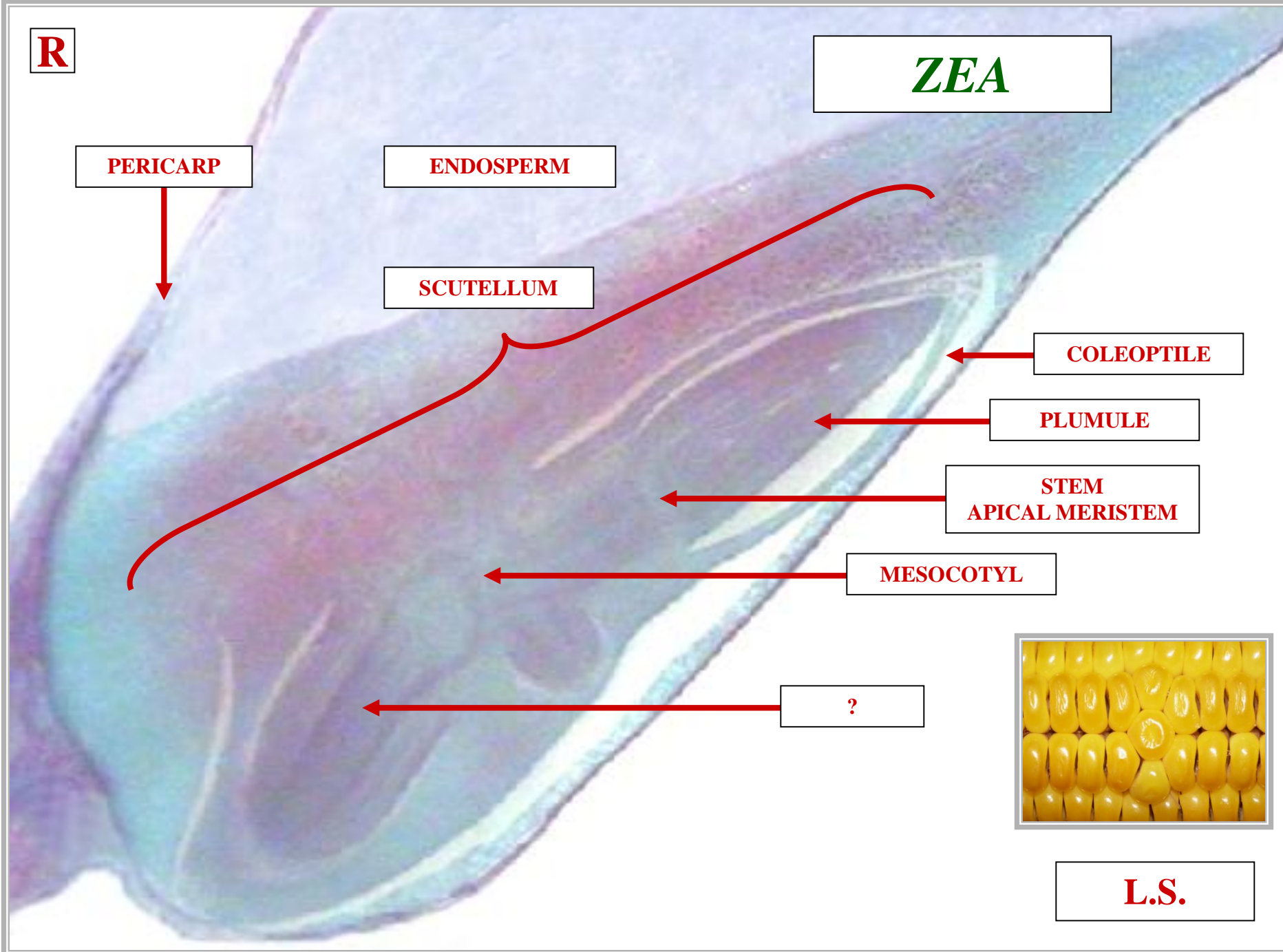
**STEM  
APICAL MERISTEM**

**MESOCOTYL**

**?**



**L.S.**



?

*ZEA*

PERICARP

ENDOSPERM

SCUTELLUM

COLEOPTILE

PLUMULE

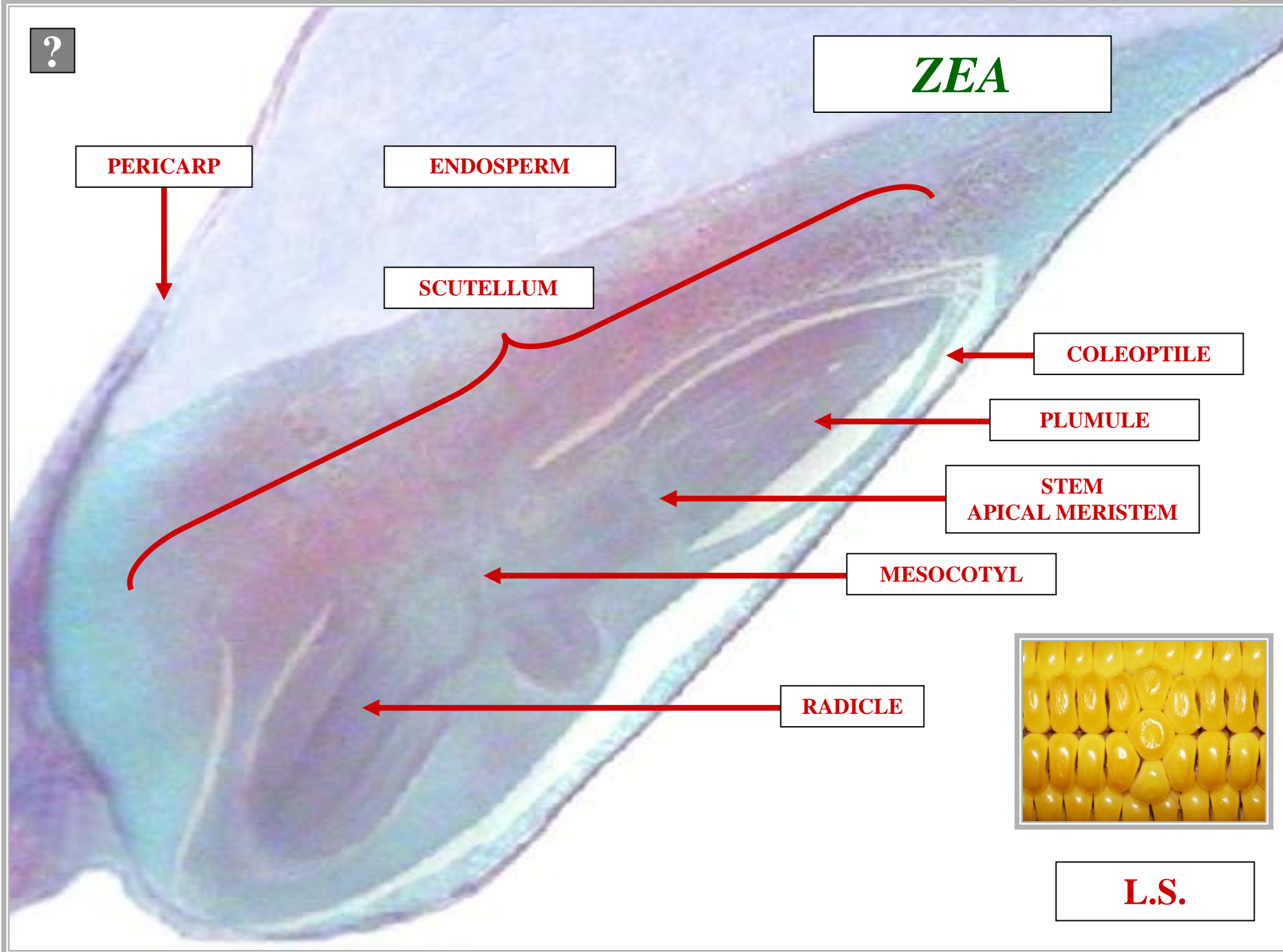
STEM  
APICAL MERISTEM

MESOCOTYL

RADICLE



L.S.



**R**

**ZEA**

**PERICARP**

**ENDOSPERM**

**SCUTELLUM**

**COLEOPTILE**

**PLUMULE**

**STEM  
APICAL MERISTEM**

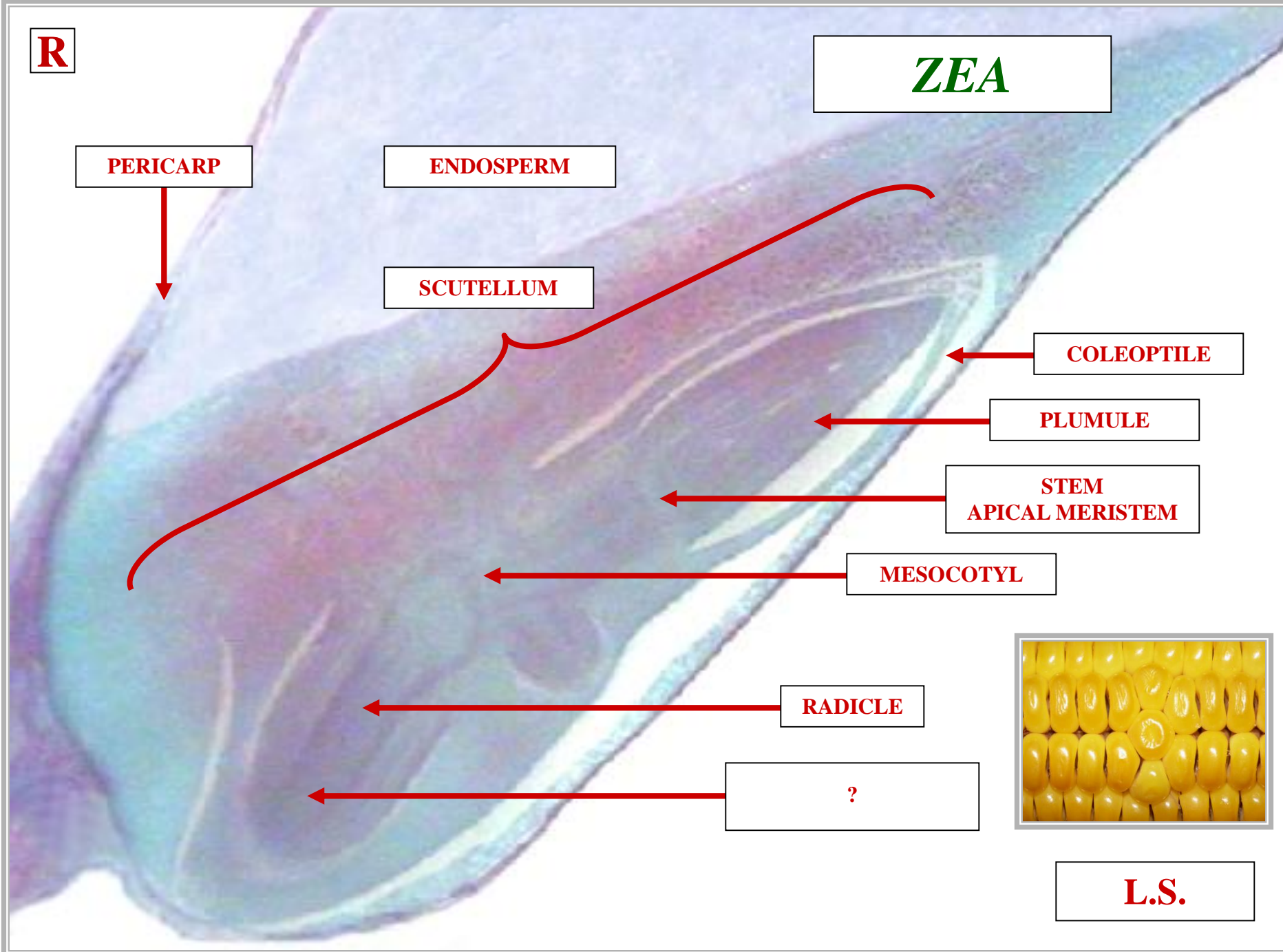
**MESOCOTYL**

**RADICLE**

**?**



**L.S.**





?

**ZEA**

**PERICARP**

**ENDOSPERM**

**SCUTELLUM**

**COLEOPTILE**

**PLUMULE**

**STEM  
APICAL MERISTEM**

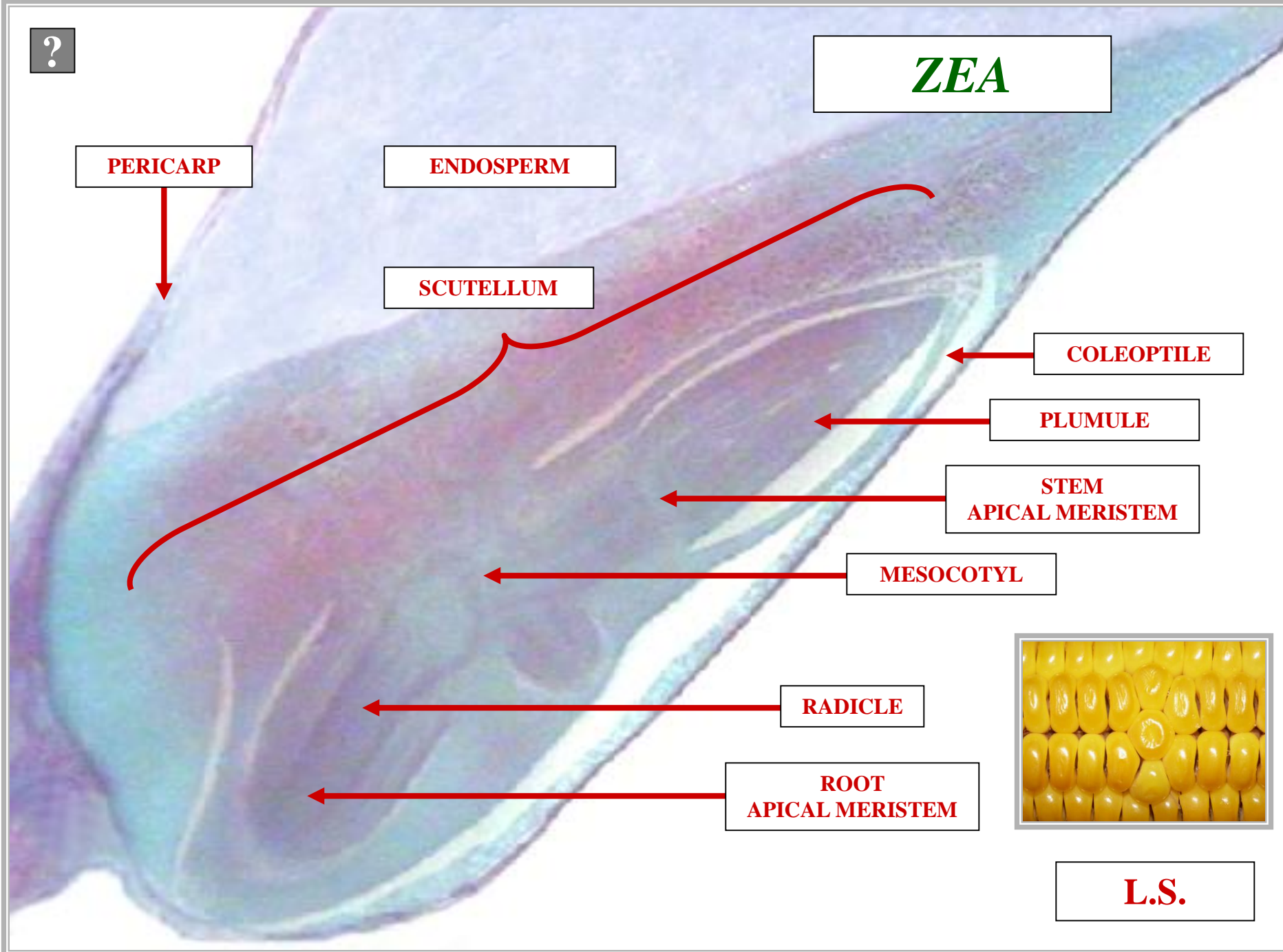
**MESOCOTYL**

**RADICLE**

**ROOT  
APICAL MERISTEM**



**L.S.**



**C**

**ZEA**

**PERICARP**

**ENDOSPERM**

**SCUTELLUM**

**COLEOPTILE**

**PLUMULE**

**STEM  
APICAL MERISTEM**

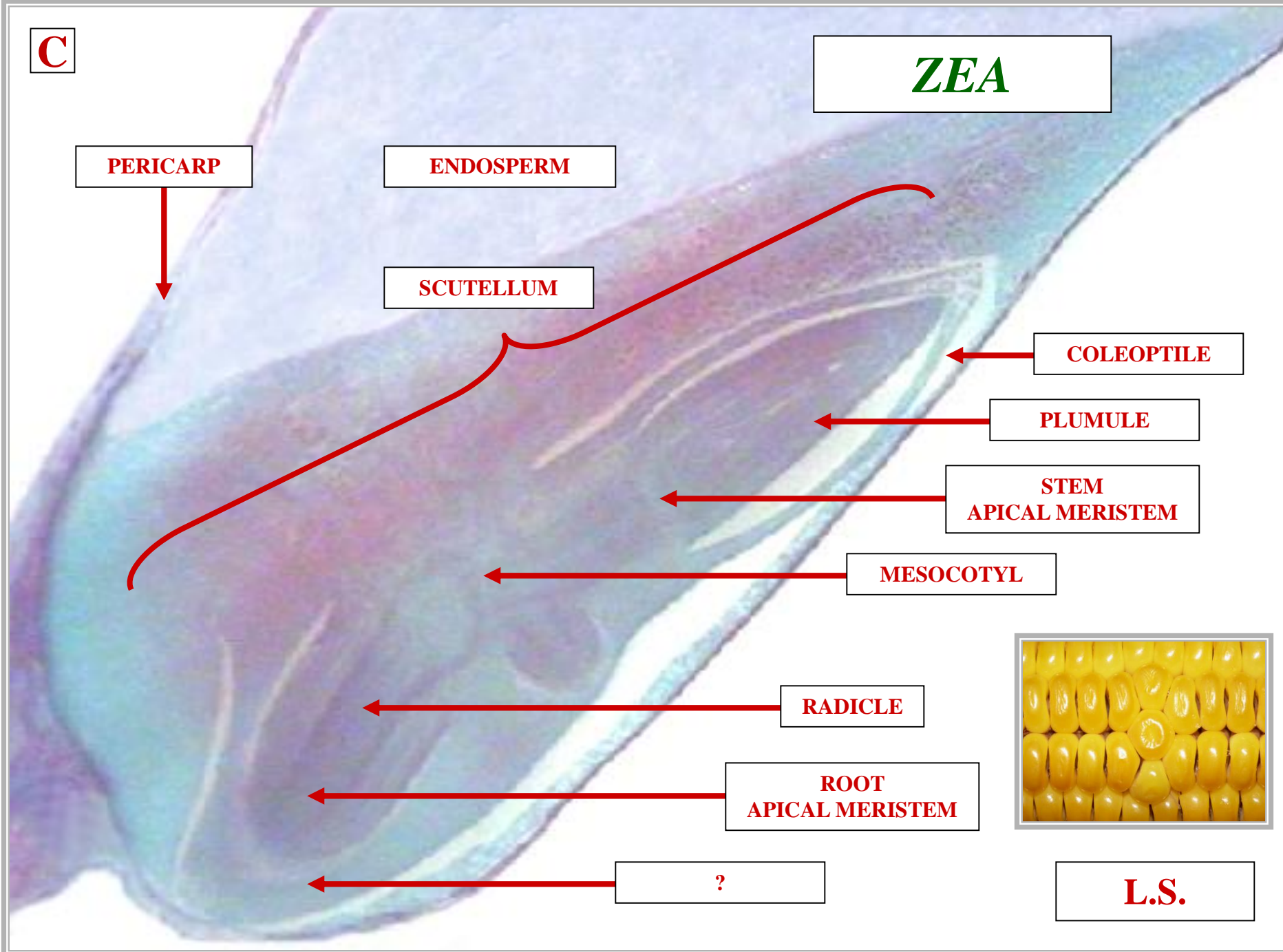
**MESOCOTYL**

**RADICLE**

**ROOT  
APICAL MERISTEM**

**?**

**L.S.**





**C**

**ZEA**

**PERICARP**

**ENDOSPERM**

**SCUTELLUM**

**COLEOPTILE**

**PLUMULE**

**STEM  
APICAL MERISTEM**

**MESOCOTYL**

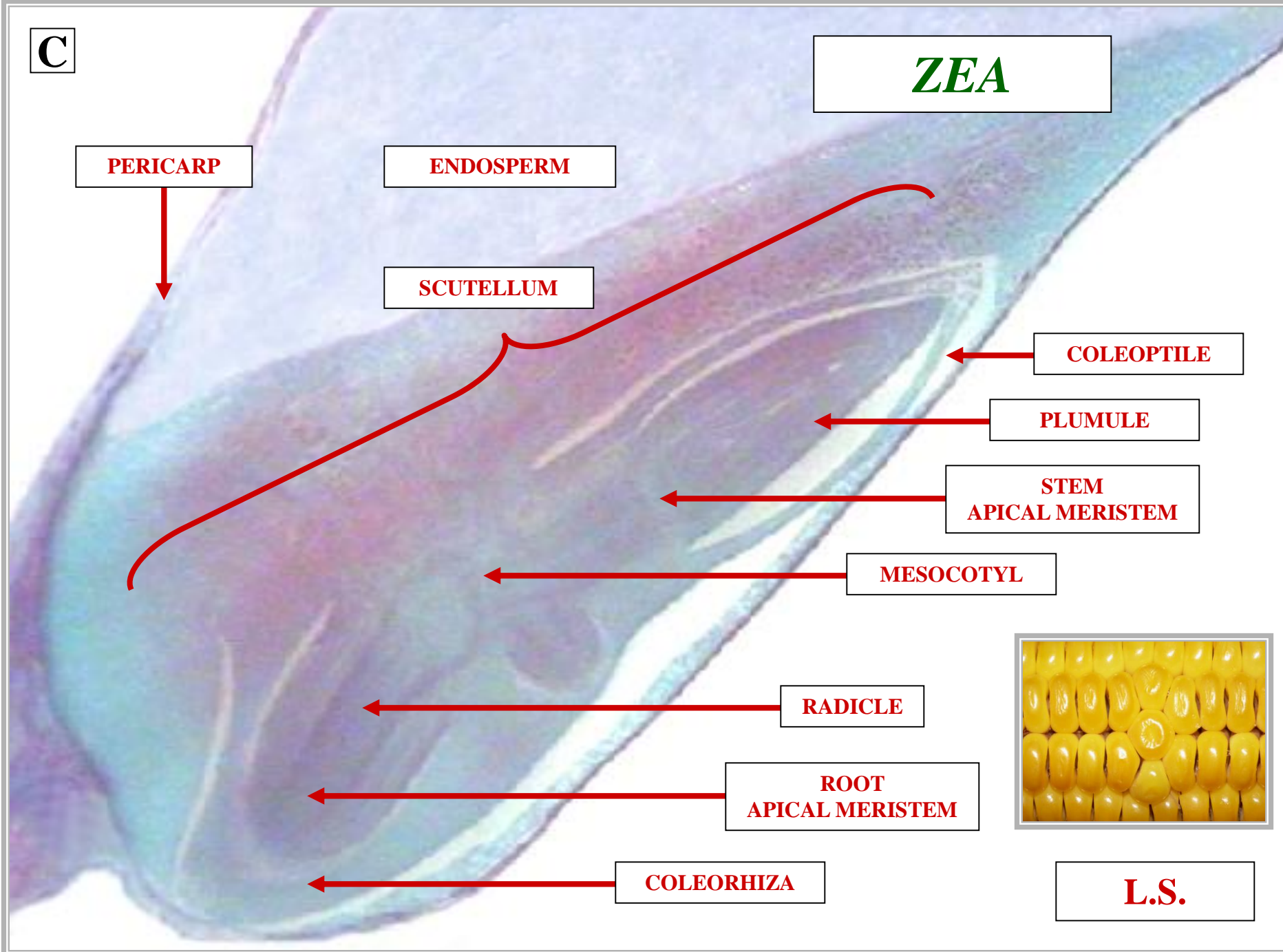
**RADICLE**

**ROOT  
APICAL MERISTEM**

**COLEORHIZA**



**L.S.**



**COLEORHIZA**

**ANGIOSPERM  
MONOCOT SEED**



**SHEATH  
PROTECTS RADICLE**

**ANGIOSPERM  
MONOCOT SEED**

^

**ZEA**

**PERICARP**

**ENDOSPERM**

**SCUTELLUM**

**COLEOPTILE**

**PLUMULE**

**STEM  
APICAL MERISTEM**

**MESOCOTYL**

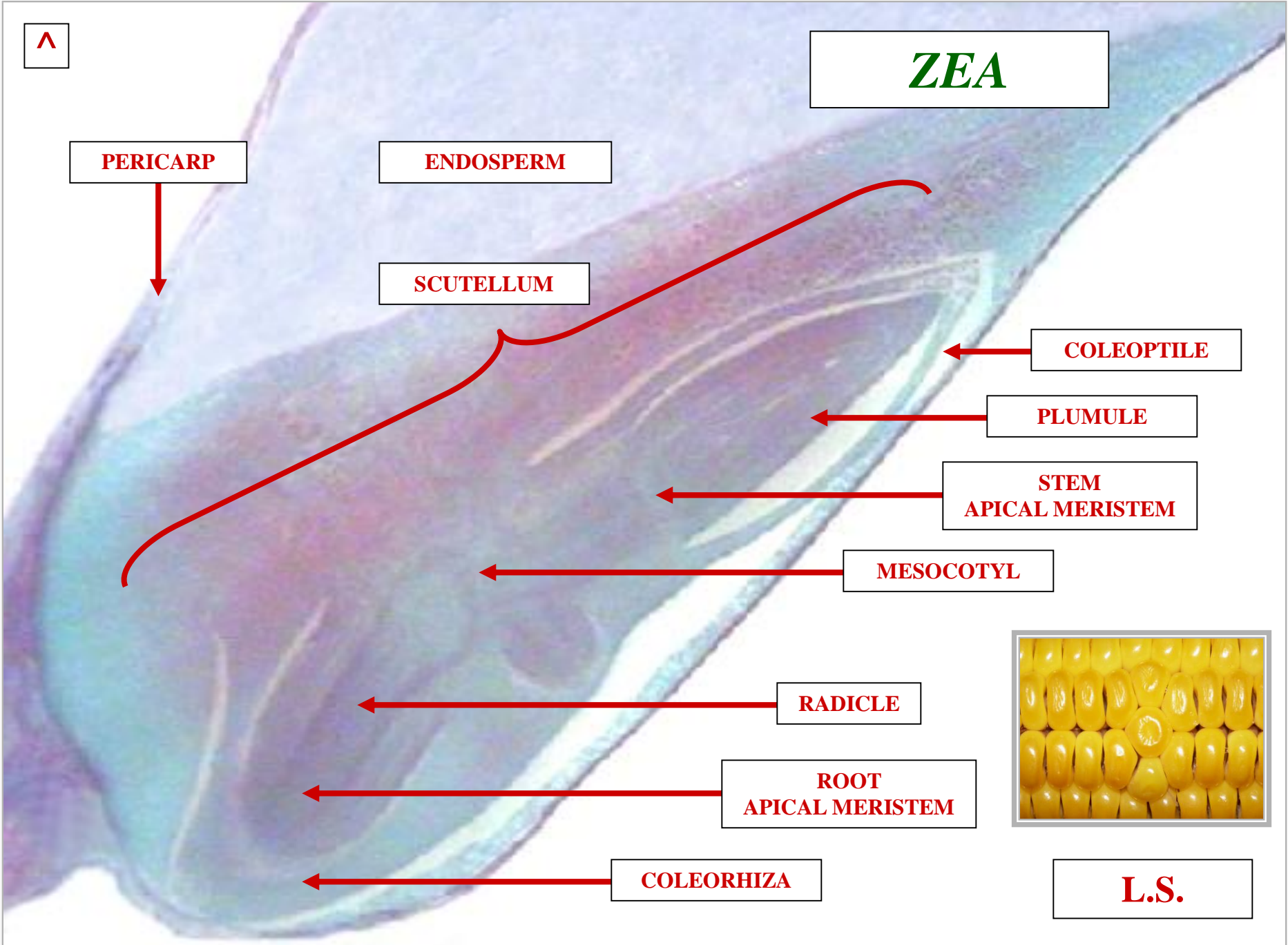
**RADICLE**

**ROOT  
APICAL MERISTEM**

**COLEORHIZA**



**L.S.**



**END  
MATERIAL  
2<sup>ND</sup>  
EXAM**





# PLANT TAXONOMY COMPONENT



# PLANT TAXONOMY

**PLANT  
TAXONOMY  
DISCIPLINES**

# **PLANT TAXONOMY DISCIPLINES**



**FLORESTIC STUDIES**

**PLANT TAXONOMY  
DISCIPLINES**



# **PLANT TAXONOMY DISCIPLINES**



**FLORISTIC STUDIES**  
**MONOGRAPHIC STUDIES**

**PLANT TAXONOMY  
DISCIPLINES**

# **PLANT TAXONOMY DISCIPLINES**



**FLORISTIC STUDIES**  
**MONOGRAPHIC STUDIES**  
**SYSTEMATIC STUDIES**

**PLANT TAXONOMY  
DISCIPLINES**



# FLORISTIC STUDIES

# **FLORESTIC STUDIES**



# **FLORISTIC STUDIES**

# FLORISTIC STUDIES



COLLECTION & ID  
PLANT LIFE WITHIN  
GEOGRAPHIC REGION

FLORISTIC STUDIES

# FLORISTIC STUDIES



**OUTCOME:  
PUBLISHED FLORA**

**FLORISTIC STUDIES**



**“FLORA”**

**TERM CONTEXT**



**“FLORA”  
1ST  
CONTEXT**

# “FLORA” 1<sup>ST</sup> CONTEXT



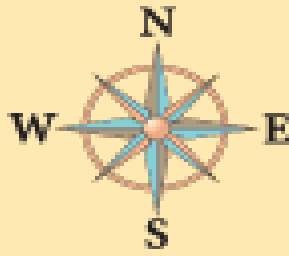
DESCRIBES

PLANT LIFE WITHIN

GEOGRAPHIC REGION

“FLORA” 1<sup>ST</sup> CONTEXT





**“FLORA” 1<sup>ST</sup> CONTEXT**



**THE BLUE RIDGE  
FLORA  
IS SPECIES RICH.**

**“FLORA” 1<sup>ST</sup> CONTEXT**



**“FLORA”  
2ND  
CONTEXT**

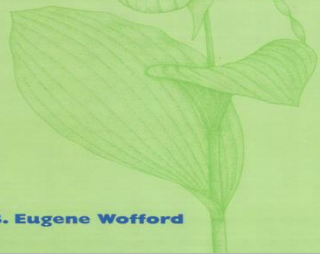
# **“FLORA” 2<sup>ND</sup> CONTEXT**



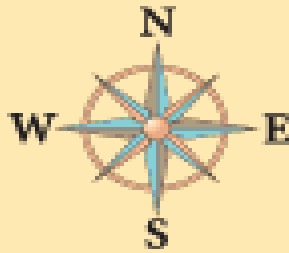
**BOOK DESCRIBING  
PLANT LIFE WITHIN  
GEOGRAPHIC REGION**

**“FLORA” 2<sup>ND</sup> CONTEXT**

Guide to the  
Vascular Plants  
of the Blue Ridge



B. Eugene Wofford



# ALPHA TAXONOMIST



**ALPHA**  
**TAXONOMIST**

# ALPHA TAXONOMIST

EG

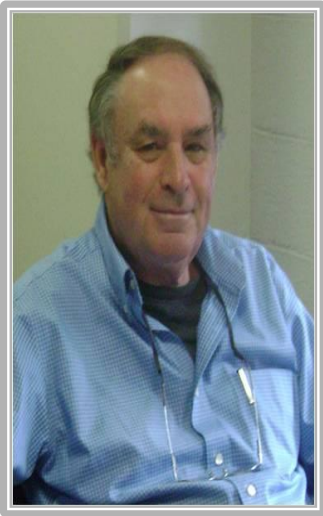


BOTANIST CONDUCTS  
FLORISTIC STUDIES

ALPHA TAXONOMIST



# ALPHA TAXONOMIST

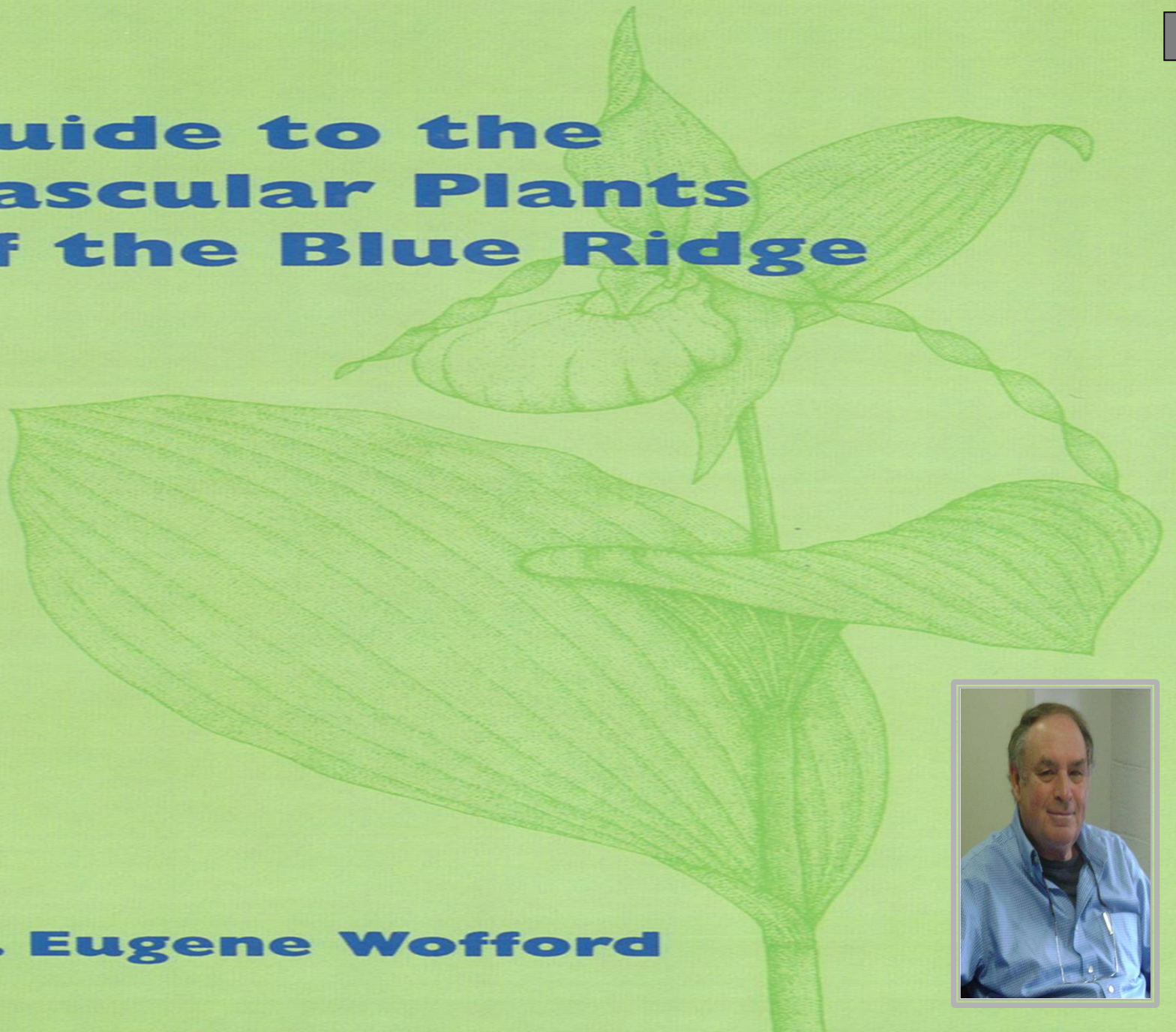


**GENE WOFFORD**  
**ASSOCIATE PROFESSOR**  
**HERBARIUM DIRECTOR**

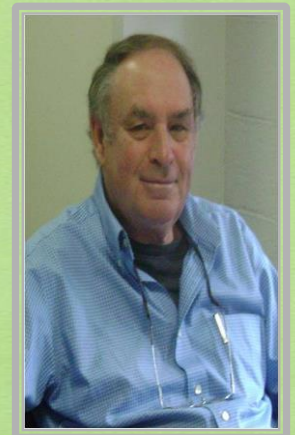
**UNIVERSITY OF TENNESSEE**



# **Guide to the Vascular Plants of the Blue Ridge**



**B. Eugene Wofford**



# FLORESTIC STUDY OUTLINE

# **FLORISTIC STUDY OUTLINE**



**SELECT GEOGRAPHIC REGION**

# **FLORISTIC STUDY OUTLINE**



# **FLORESTIC STUDY OUTLINE**



**SELECT GEOGRAPHIC REGION  
CONDUCT HERBARIUM SEARCH**

**FLORESTIC STUDY  
OUTLINE**

# **FLORISTIC STUDY OUTLINE**



**SELECT GEOGRAPHIC REGION  
CONDUCT HERBARIUM SEARCH  
CONDUCT FIELD COLLECTIONS**

**FLORISTIC STUDY  
OUTLINE**

# FLORISTIC STUDY OUTLINE



SELECT GEOGRAPHIC REGION  
CONDUCT HERBARIUM SEARCH  
CONDUCT FIELD COLLECTIONS  
PREP FIELD COLLECTIONS

# FLORISTIC STUDY OUTLINE

# FLORISTIC STUDY OUTLINE



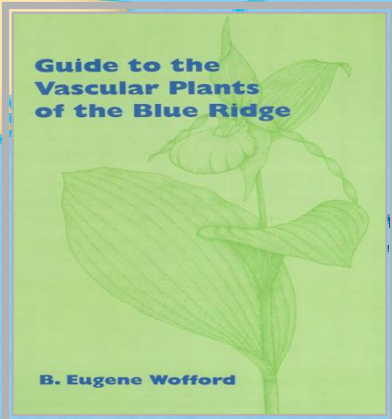
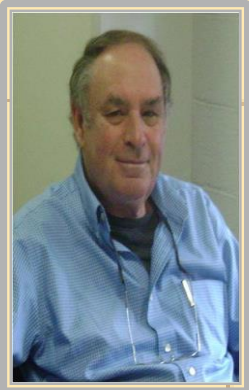
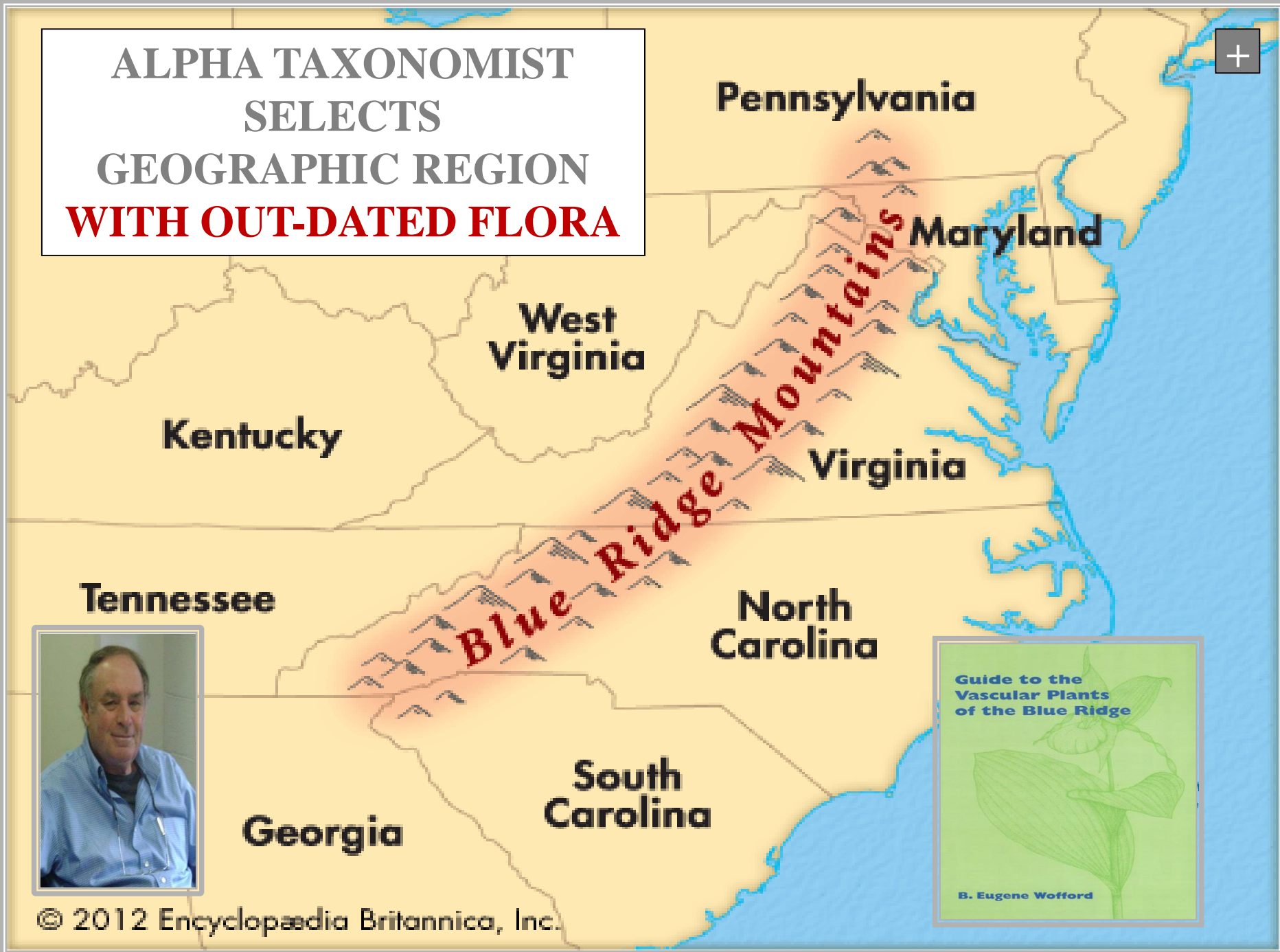
SELECT GEOGRAPHIC REGION  
CONDUCT HERBARIUM SEARCH  
CONDUCT FIELD COLLECTIONS  
PREP FIELD COLLECTIONS  
PUBLISH FLORA

# FLORISTIC STUDY OUTLINE



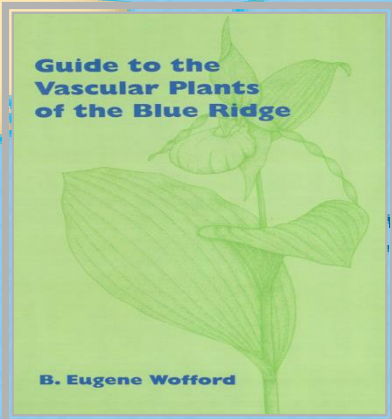
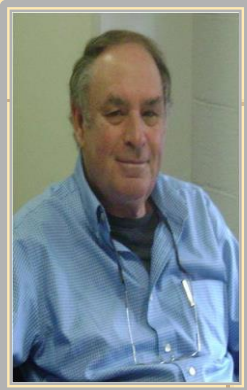
# SELECT GEOGRAPHIC REGION

**ALPHA TAXONOMIST  
SELECTS  
GEOGRAPHIC REGION  
WITH OUT-DATED FLORA**





**ALPHA TAXONOMIST  
SELECTS  
GEOGRAPHIC REGION  
WITH NO FLORA**



**CONDUCT  
HERBARIUM  
SEARCH**

**HERBARIUM**

**PLANT HERBARIUM**



**PLANT SPECIMEN  
DEPOSITORY**

**PLANT HERBARIUM**

**HERBARIUM  
PLANT SPECIMEN  
DEPOSITORY**



**HERBARIUM**



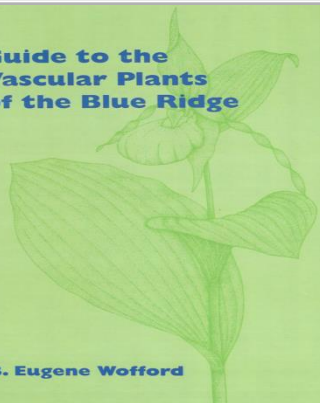
**ALPHA TAXONOMIST  
BARROWS SPECIMENS  
COLLECTED W/IN  
GEOGRAPHIC AREA**



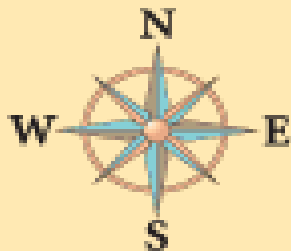
**HERBARIUM**



Guide to the  
Vascular Plants  
of the Blue Ridge



B. Eugene Wofford



ALPHA TAXONOMIST  
BARROWS SPECIMENS  
COLLECTED W/IN  
GEOGRAPHIC AREA



Kentucky

West  
Virginia

Maryland

Virginia

Tennessee

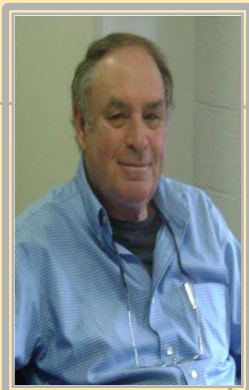
North  
Carolina

Blue Ridge Mountains

Georgia

South  
Carolina

ATLANTIC  
OCEAN



**INDEX  
HERBARIORUM**



**INDEX**  
**HERBARIORUM**

**PLANT HERBARIUM**



**CATALOG**

**WORLD HERBARIA**

**ADDRESSES**

**---**

**INTER-NET SERVICE**

**PLANT HERBARIUM**

# Index Herbariorum

## Part I: The Herbaria of the World

Eighth Edition



# Search Index Herbariorum

Part I: The Herbaria of the World

### Search for an Institution

#### Search by Acronym

Use the field below to search the database using the acronym as the search criteria. Enter the herbarium acronym in the field and press the Search button to execute the query.

Herbarium Acronym

#### Search by Name or Location

Use the fields below to search the database for an institution by specifying the appropriate search criteria in the relevant fields. Press the Search button to execute the search.

Institution

City

State

Country

### Search for a Person

#### Search by Person

Search for an herbarium staff member by entering the appropriate search criteria in the relevant fields below. Press the Search button to execute the search.

Last Name

First Name

Any Part of Name Contains

Herbarium Code

Institution

City

State

Country

Research Specialty



# Index Herbariorum

## Part I: The Herbaria of the World

Eighth Edition



# Search Index Herbariorum

Part I: The Herbaria of the World

### Search for an Institution

#### Search by Acronym

Use the field below to search the database using the acronym as the search criteria. Enter the herbarium acronym in the field and press the Search button to execute the query.

Herbarium Acronym

Search Clear

#### Search by Name or Location

Use the fields below to search the database for an institution by specifying the appropriate search criteria in the relevant fields. Press the Search button to execute the search.

Institution

City

State

Country

Search Clear

### Search for a Person

#### Search by Person

Search for an herbarium staff member by entering the appropriate search criteria in the relevant fields below. Press the Search button to execute the search.

Last Name

First Name

Any Part of Name Contains

Herbarium Code

Institution

City

State

Country

Research Specialty

Search Clear

# Search Results:

T

Herbarium Code	Institution	Location
<a href="#">APSC</a>	Austin Peay State University	U.S.A. Tennessee. CLARKSVILLE.
<a href="#">ETSU</a>	East Tennessee State University	U.S.A. Tennessee. JOHNSON CITY.
<a href="#">GSMNP</a>	Great Smoky Mountains National Park	U.S.A. Tennessee. GATLINBURG.
<a href="#">HTTU</a>	Tennessee Technological University	U.S.A. Tennessee. COOKEVILLE.
<a href="#">MEM</a>	University of Memphis	U.S.A. Tennessee. MEMPHIS.
<a href="#">MTSU</a>	Middle Tennessee State University	U.S.A. Tennessee. MURFREESBORO.
<a href="#">SWMT</a>	Rhodes College	U.S.A. Tennessee. MEMPHIS.
<a href="#">TENN</a>	University of Tennessee	U.S.A. Tennessee. KNOXVILLE.
<a href="#">UCHT</a>	University of Tennessee, Chattanooga	U.S.A. Tennessee. CHATTANOOGA.
<a href="#">UOS</a>	University of the South	U.S.A. Tennessee. SEWANEE.
<a href="#">VDB</a>	Vanderbilt University	U.S.A. Tennessee. NASHVILLE.

# Herbarium Details:



**Name** **University of Tennessee**

**Herbarium Code** TENN

**Address** Herbarium  
Botany Department  
**University of Tennessee**  
Knoxville, Tennessee 37996-1100  
U.S.A.  
<http://tenn.bio.utk.edu>

**Contact** [1] 865/ 974-6212.  
Fax: [1] 865/ 974-0978.

**Correspondent** [B. Wofford](#), Director, [bewofford@utk.edu](mailto:bewofford@utk.edu)

**Number of Specimens** 550 000

**Important Collections** L. R. Hesler, A. J. Sharp, G. Zodda

**Notes** Original herbarium destroyed by fire in 1934.

**Specialty:** Vascular plants of Tennessee, southern Appalachians, Great Smoky Mountain National Park, southeastern U.S., Mexico, and Guatemala; fungi chiefly of southeastern U.S.; bryophytes and pteridophytes worldwide.

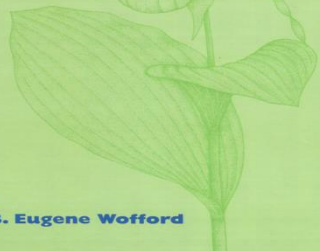




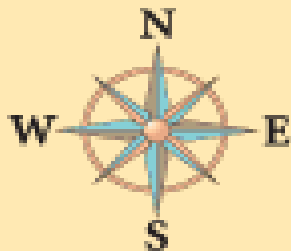
**HERBARIUM  
REMOVES SPECIMENS  
SENDS SPECIMENS  
AS REQUESTED TO  
ALPHA TAXONOMIST**



Guide to the  
Vascular Plants  
of the Blue Ridge



B. Eugene Wofford



# ALPHA TAXONOMIST DATA BASES HERBARIUM COLLECTIONS



Kentucky

West  
Virginia

Maryland

Virginia

Tennessee

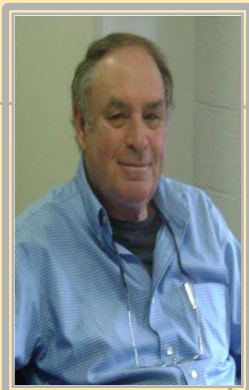
North  
Carolina

*Blue Ridge Mountains*

Georgia

South  
Carolina

ATLANTIC  
OCEAN







*Emmenanthe pendulifera* Benth

0.2 mi. E of Lake Alamo SP entrance & 1 rd-mi. S  
along dirt track, large wash  
Sonoran Desert Scrub  
1600 ft.

Charlotte M. Christy 1083c

29 Mar 1992

HERBARIUM LABEL



SCROPHULARIACEAE

*Derwentia derwentiana* (Andrews) B.G. Briggs & Ehrend.  
subsp. *derwentiana*  
det. B.J. Lepschi 1998

0.4 km E of Coryah Gap Trail on main Mt Kaputar - Narrabri  
Road, c. 3.5 km WSW of summit of Mt Kaputar.  
30° 17' 04" S 150° 08' 15" E

Floppy, pale-beige foam on road cutting / steep slope. Tall  
*Eucalyptus* spp. forest with understorey of saplings and shrubs.  
Corolla pale mauve-white.

Fairly common.

B.J. Lepschi 4104  
& J.R. Connors

Dups: (6) B, CDA, L, MO, P, US

12 Dec 1998



CANB 621770.1

HERBARIUM LABEL

# ALPHA TAXONOMIST DATA BASES HERBARIUM COLLECTIONS



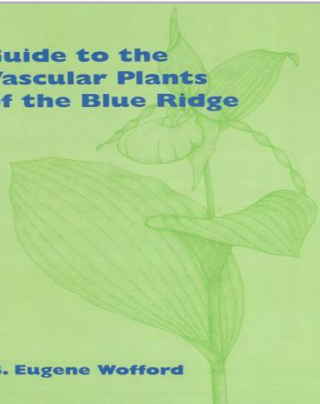
- FAMILY :
- GENUS :
- SPECIES :
- LOCATION :
- NEAREST MUNICIPALITY :
- COUNTY :
- STATE :
- HABITAT :
- GENERAL NOTES :



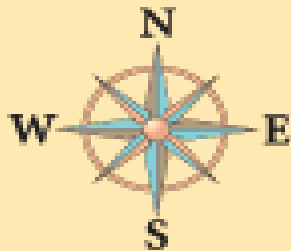


# CONDUCT FIELD COLLECTIONS

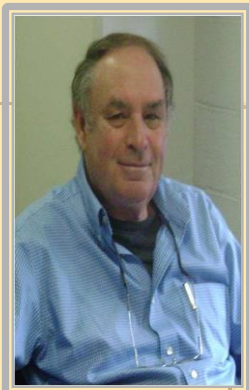
Guide to the  
Vascular Plants  
of the Blue Ridge



B. Eugene Wofford



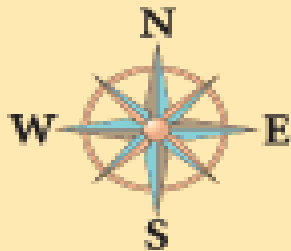
# ALPHA TAXONOMIST SELECTS PRIORITY COLLECTION LOCATIONS



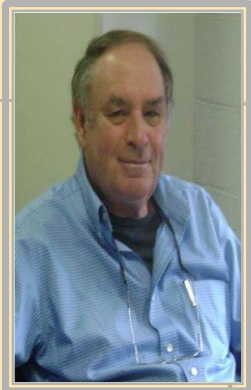
○ = PRIORITY COLLECTION LOCATION

Guide to the  
Vascular Plants  
of the Blue Ridge

B. Eugene Wofford



# ALPHA TAXONOMIST SELECTS PRIORITY COLLECTION LOCATIONS



○ = PRIORITY COLLECTION LOCATION

# **COLLECTION METHODS**

**TRANSECT  
COLLECTION  
METHOD**

**TRANSECT  
COLLECTION METHOD**



**COLLECT  
AT DESIGNATED  
TRANSECT POINTS**

**TRANSECT  
COLLECTION METHOD**



# **TRANSECT COLLECTION METHOD**



**IMPRACTICAL**

# **TRANSECT COLLECTION METHOD**

An aerial photograph of a dense forest with a mix of green and yellow-green foliage. A white rectangular box with a black border is centered in the image, containing text. In the top right corner, there is a small white horizontal line.

**SELECTED PRIORITY  
COLLECTION LOCATION  
WITH FEW COLLECTIONS**





**SELECTED PRIORITY  
COLLECTION LOCATION  
WITH FEW COLLECTIONS**

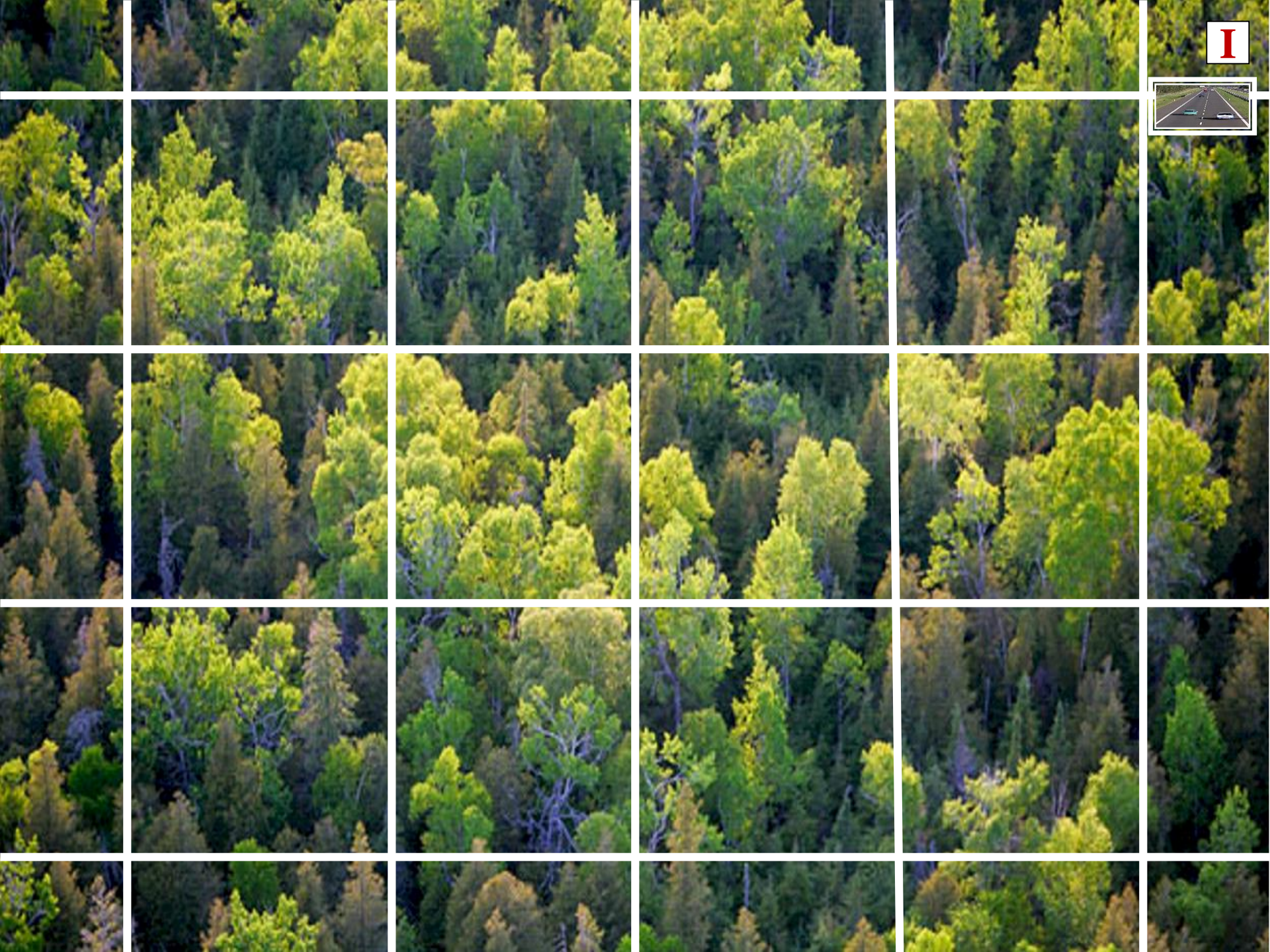




**GPS UNIT**









I



**IMPRACTICAL**



**IMPRACTICAL**



**IMPRACTICAL**



**IMPRACTICAL**

**MEANDER  
COLLECTION  
METHOD**





**MEANDER  
COLLECTION METHOD**

**COLLECT  
TOWARDS GREATER  
DIVERSITY**

**MEANDER  
COLLECTION METHOD**



# **MEANDER COLLECTION METHOD**

**PRACTICAL**

# **MEANDER COLLECTION METHOD**

An aerial photograph of a dense forest with a mix of green and yellow-green foliage. A white rectangular text box is centered in the lower half of the image. In the top right corner, there is a small white horizontal line and a larger grey oval with a white border.

**SELECTED PRIORITY  
COLLECTION LOCATION  
WITH FEW COLLECTIONS**