

CHARACTER POLARITY

CHARACTER POLARITY

CHARACTER POLARITY



CHARACTER STATE EVOLUTION

CHARACTER POLARITY

CHARACTER POLARITY



CHARACTER STATE EVOLUTION

CHARACTER STATE DIRECTION

CHARACTER POLARITY

CHARACTER POLARITY



CHARACTER STATE EVOLUTION

CHARACTER STATE DIRECTION

DETERMINED VIA FOSSIL RECORD

CHARACTER POLARITY

A photograph of a fossilized leaf impression on a light-colored, textured rock surface. The leaf is dark brown and shows a clear network of veins. The text is overlaid on the central part of the leaf.

**CHARACTER
POLARITY
DETERMINED VIA
FOSSIL RECORD**

CHARACTER POLARITY

!!!*DO NOT COPY*!!!



CHARACTER

POLARITY

!!!*DO NOT COPY*!!!

EXAMPLE

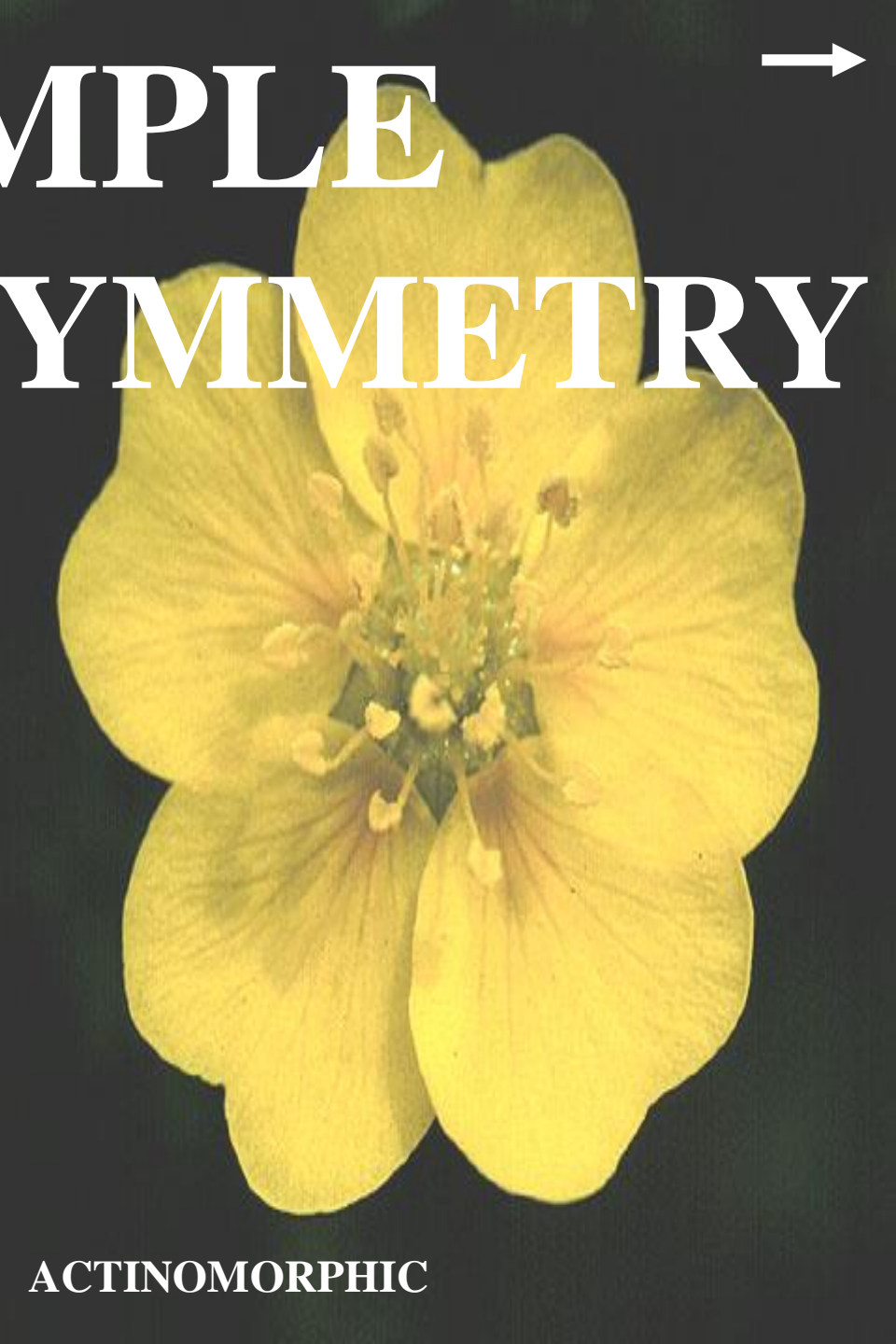
FLOWER SYMMETRY



EXAMPLE FLOWER SYMMETRY



ZYGOMORPHIC

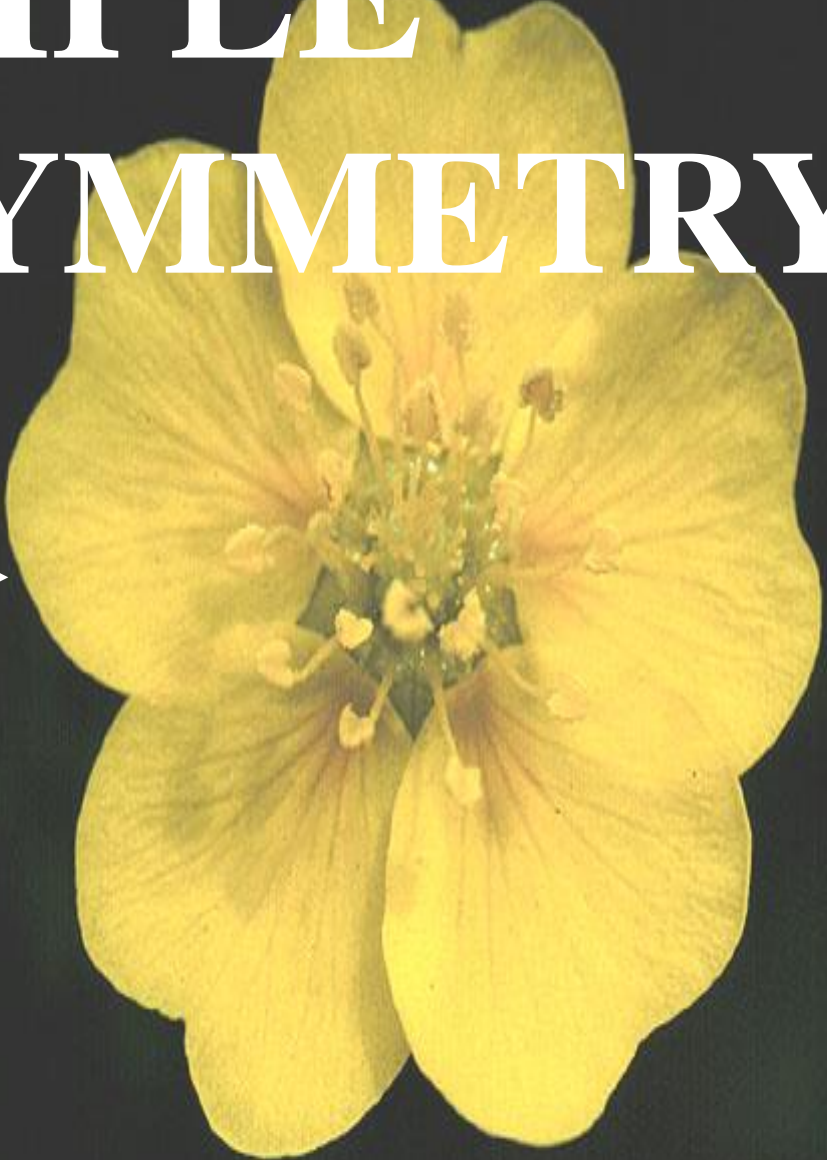


ACTINOMORPHIC

EXAMPLE FLOWER SYMMETRY



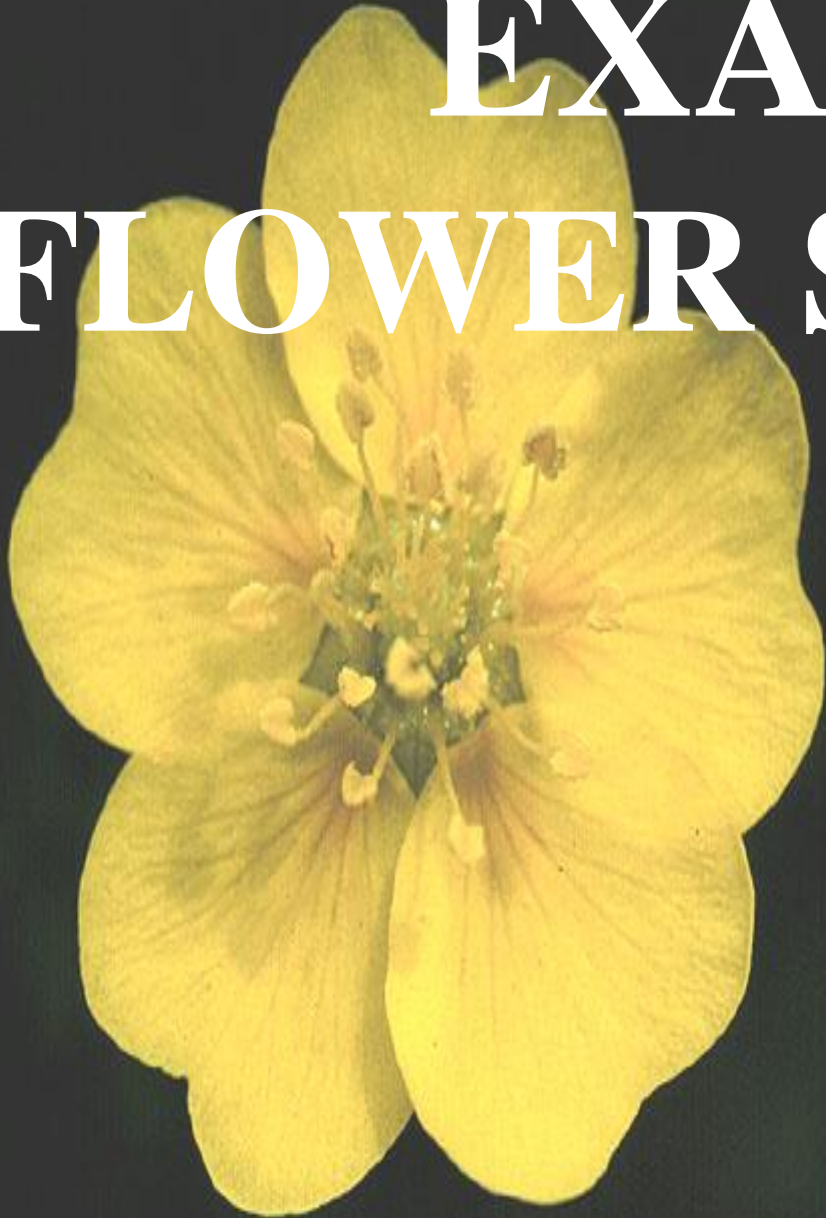
ZYGOMORPHIC



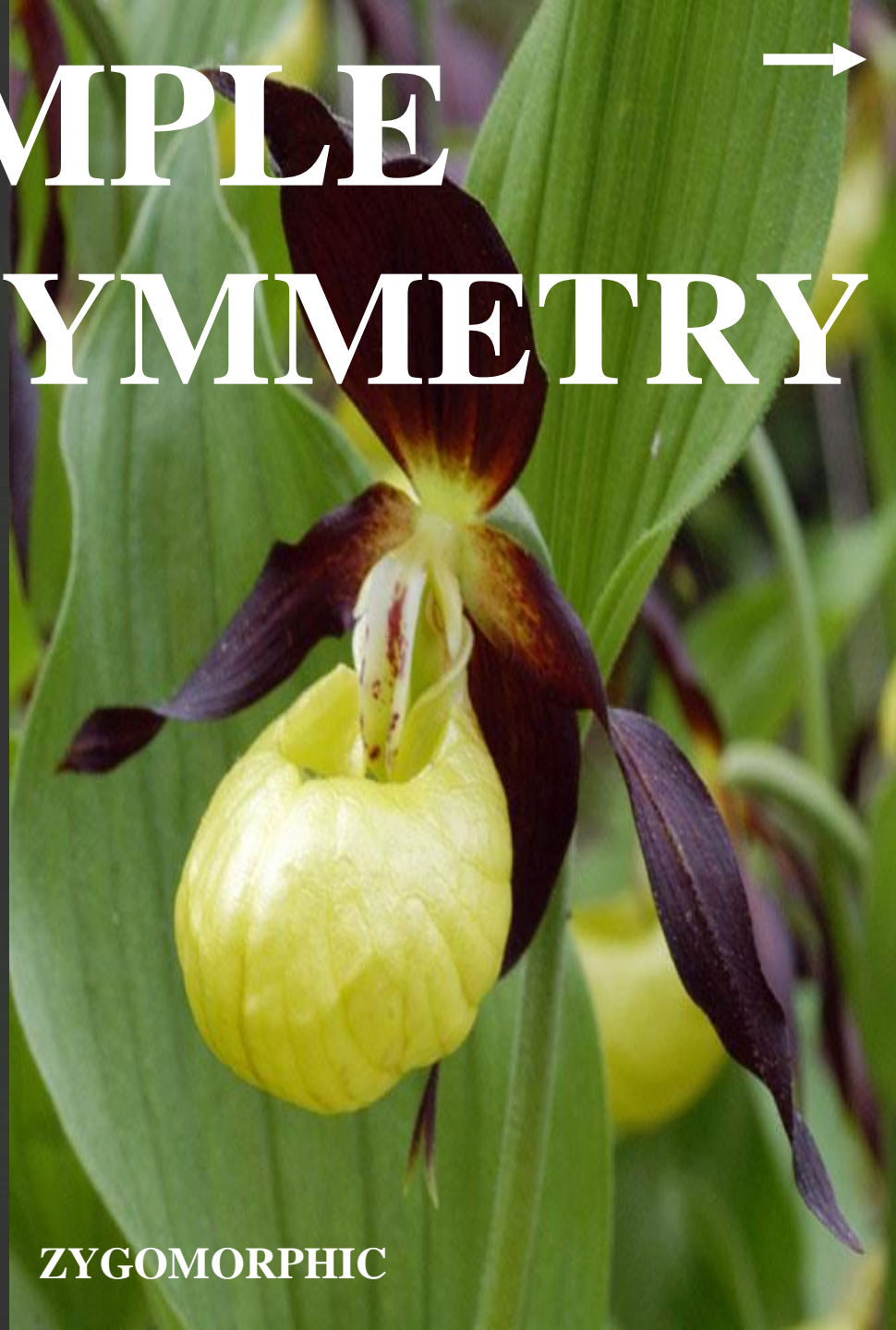
ACTINOMORPHIC



EXAMPLE FLOWER SYMMETRY



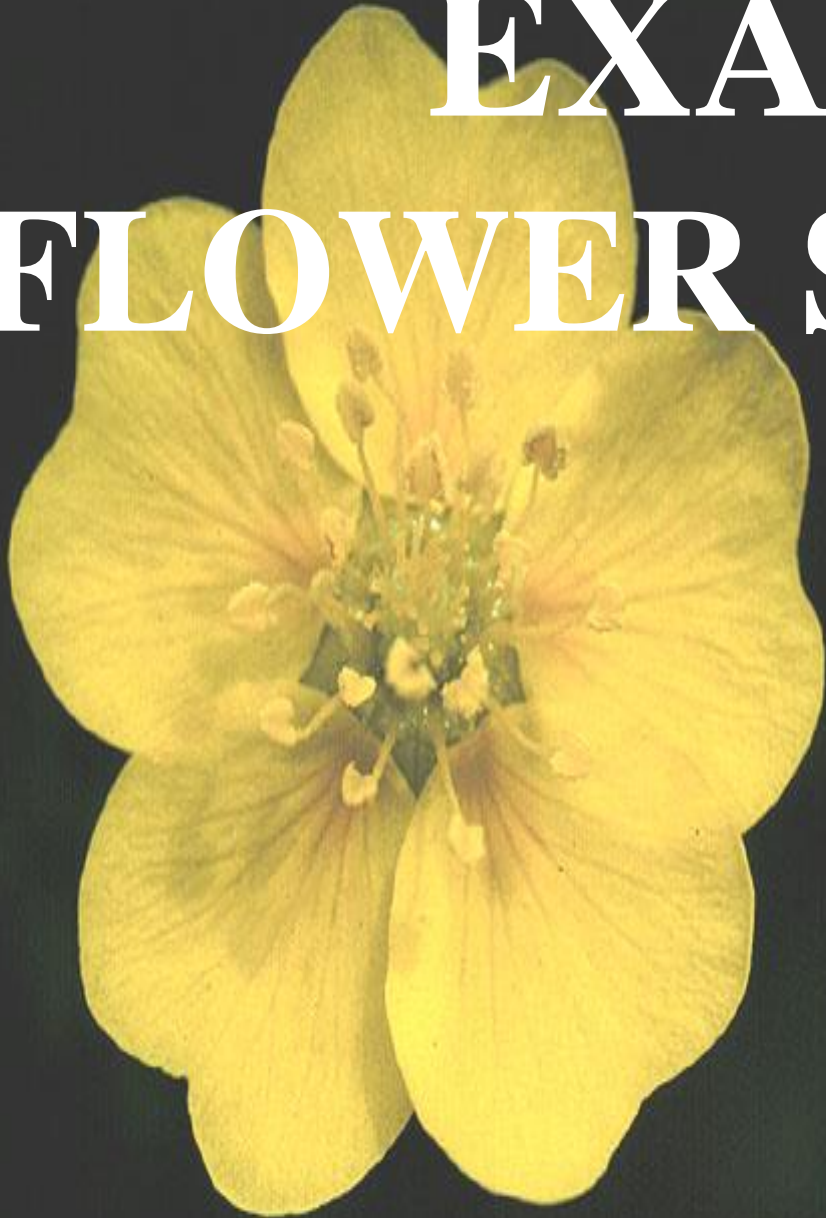
ACTINOMORPHIC



ZYGOMORPHIC



EXAMPLE FLOWER SYMMETRY



ACTINOMORPHIC

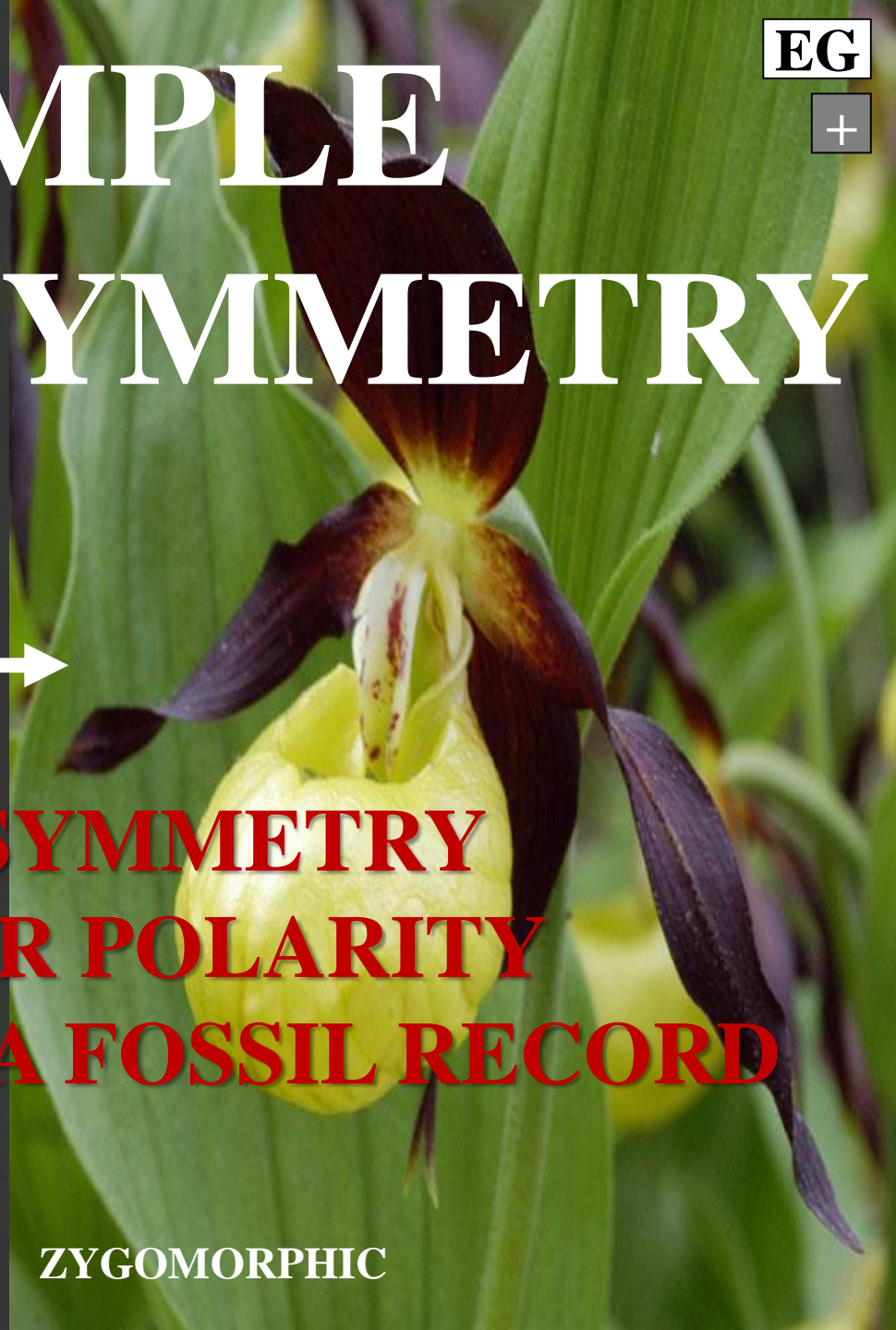


ZYGOMORPHIC



**FLOWER SYMMETRY
CHARACTER POLARITY
DETERMINED VIA
FOSSIL RECORD**

EXAMPLE FLOWER SYMMETRY



**FLOWER SYMMETRY
CHARACTER POLARITY
DETERMINED VIA FOSSIL RECORD**

ACTINOMORPHIC

ZYGOMORPHIC

DATA MATRIX CHARACTER POLARITIES

- WOODY** → **HERBACEOUS**
- SIMPLE LEAF** → **COMPOUND LEAF**
- STIPULES PRESENT** → **STIPULES ABSENT**
- ALTERNATE** → **OPPOSITE**
- PHYLLOTAXY** → **PHYLLOTAXY**
- ACTINOMORPHIC** → **ZYGOMORPHIC**
- PRIMITIVE PLT** → **ADVANCED PLT**

DATA MATRIX



PLT-TAXON	CH-1	CH-2	CH-3	CH-4	CH-5
PLT-TAXON-E	+	+	+	+	+
PLT-TAXON-D	+	+	+	+	-
PLT-TAXON-C	+	+	+	-	-
PLT-TAXON-B	+	+	-	-	-
PLT-TAXON-A	+	-	-	-	-

+ = CHARACTER PRESENT

MUST DETERMINE CHARACTER POLARITY OF ALL CHARACTERS

CLASSICAL PHYLOGENETIC DENDROGRAM

PHYLOGRAM



PHYLOGRAM DENDROGRAM

GENERATED FREE-STYLE VIA:

PHYLOGRAM DENDROGRAM

PHYLOGRAM DENDROGRAM



GENERATED FREE-STYLE VIA:
DATA MATRIX
&
CHARACTER POLARITIES

PHYLOGRAM
DENDROGRAM

PHYLOGRAM



GENERATED FREE-STYLE

DATA MATRIX

TAXON	CH-1	CH-2	CH-3	CH-4	CH-5
TAXON-E	+	+	+	+	+
TAXON-D	+	+	+	+	
TAXON-C	+	+	+		
TAXON-B	+	+			
TAXON-A	+				

+ = CHARACTER PRESENT

PHYLOGRAM



DATA MATRIX

TAXON CH-1 CH-2 CH-3 CH-4 CH-5

TAXON-A +

+ = CHARACTER PRESENT

EVOLVED CH-1

PLT-TAXON-A

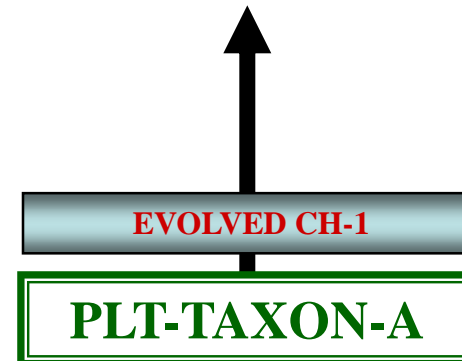
PHYLOGRAM

DATA MATRIX

TAXON CH-1 CH-2 CH-3 CH-4 CH-5

TAXON-A +

+ = CHARACTER PRESENT



PHYLOGRAM



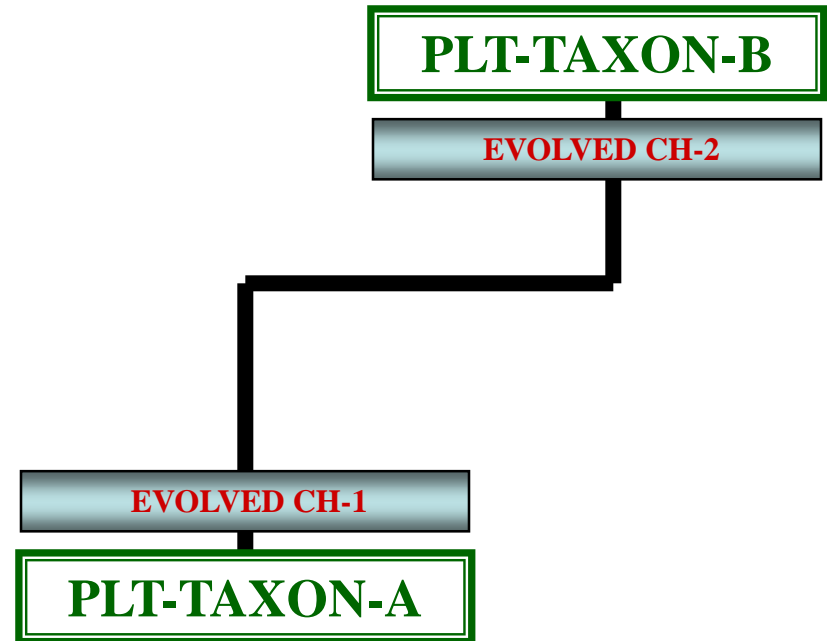
DATA MATRIX

TAXON CH-1 CH-2 CH-3 CH-4 CH-5

TAXON-B + +

TAXON-A +

+ = CHARACTER PRESENT

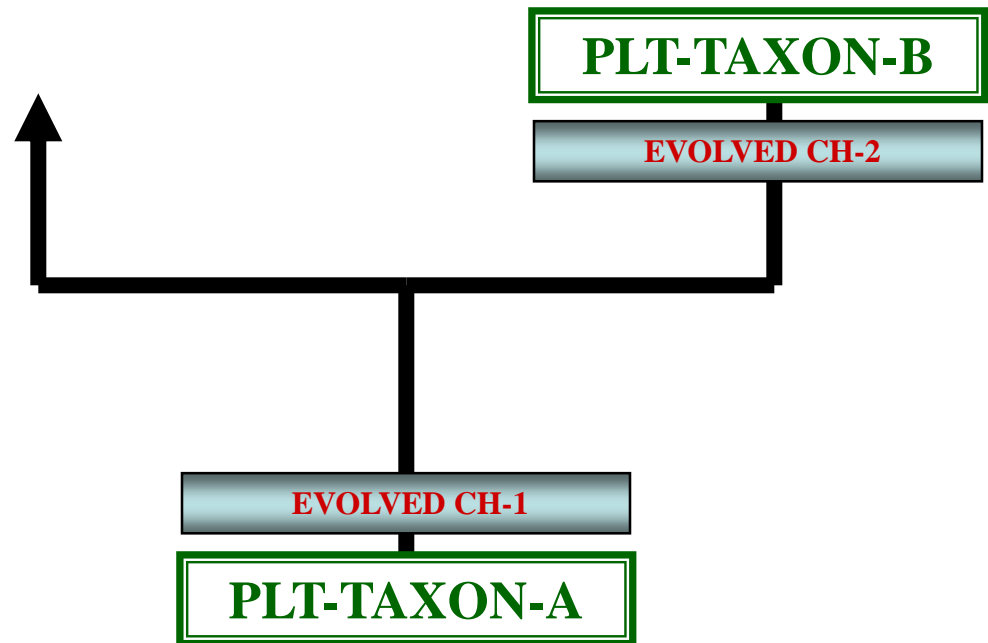


PHYLOGRAM

DATA MATRIX

TAXON	CH-1	CH-2	CH-3	CH-4	CH-5
TAXON-B	+	+			
TAXON-A	+				

+ = CHARACTER PRESENT



PHYLOGRAM

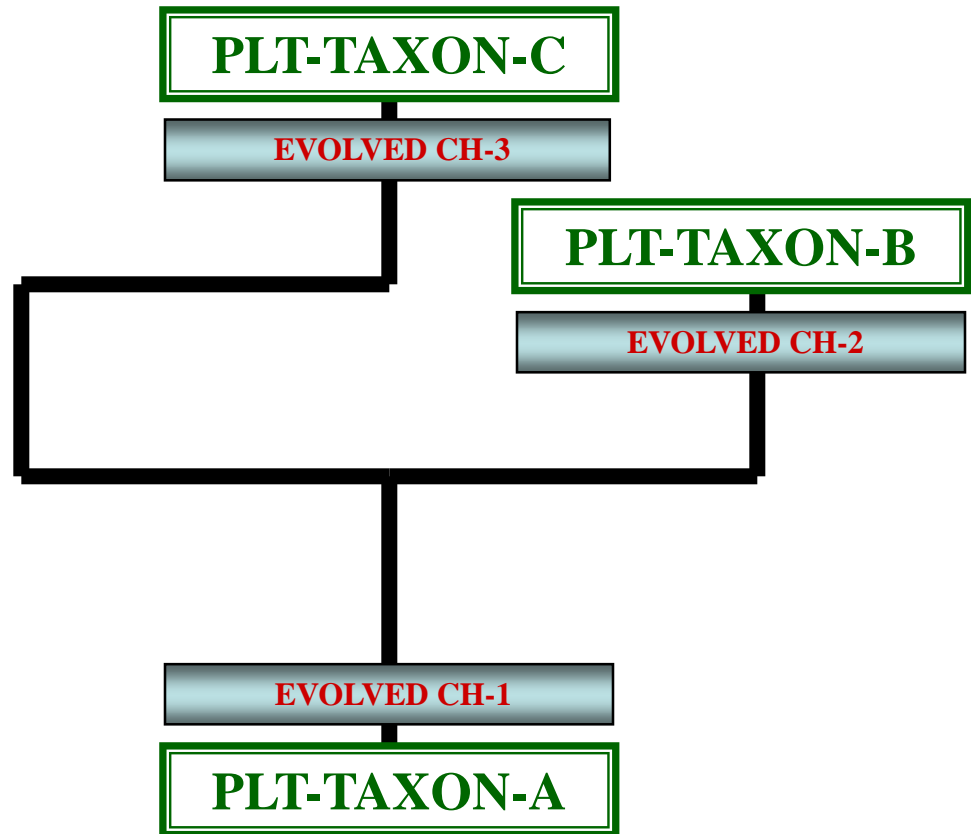


DATA MATRIX

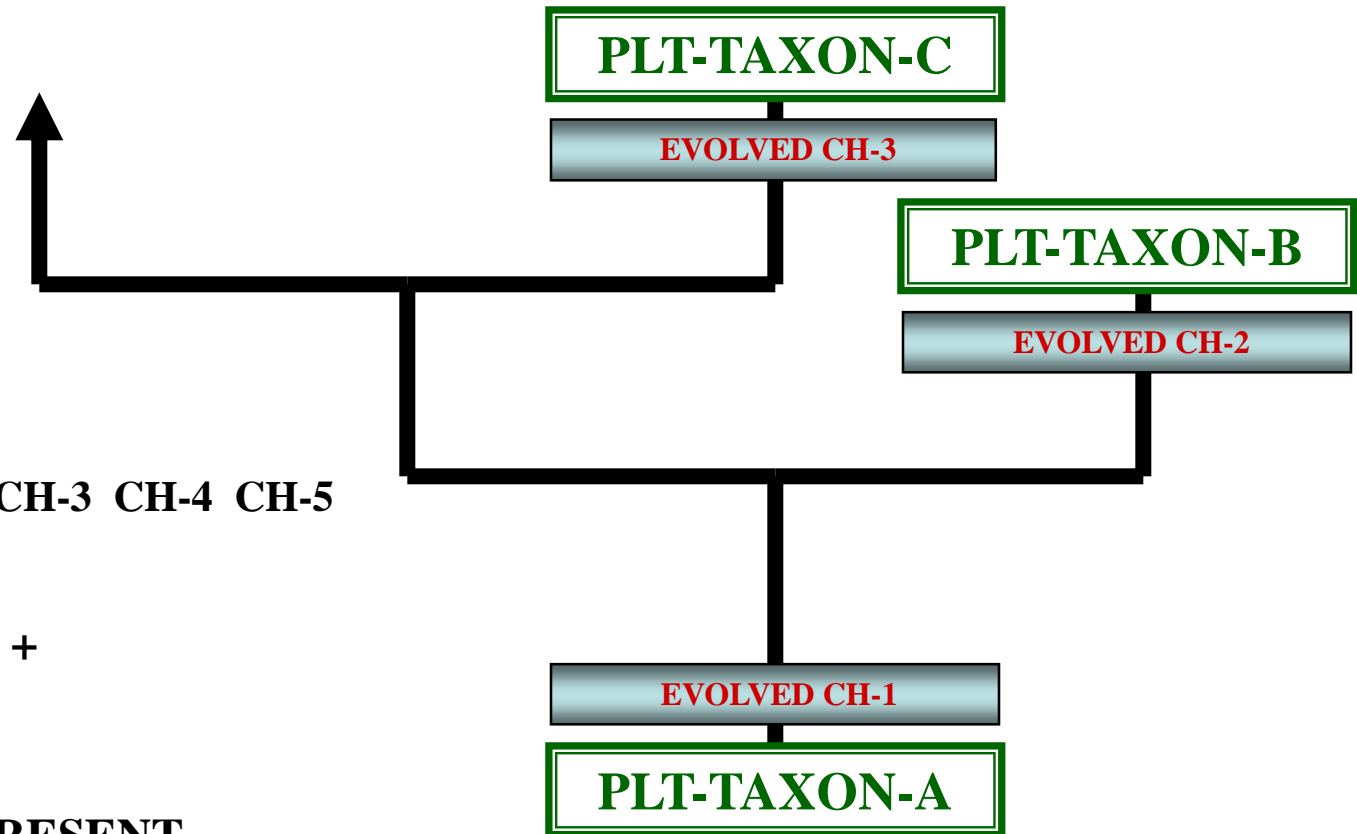
TAXON CH-1 CH-2 CH-3 CH-4 CH-5

TAXON-C + + +
TAXON-B + +
TAXON-A +

+ = CHARACTER PRESENT



PHYLOGRAM



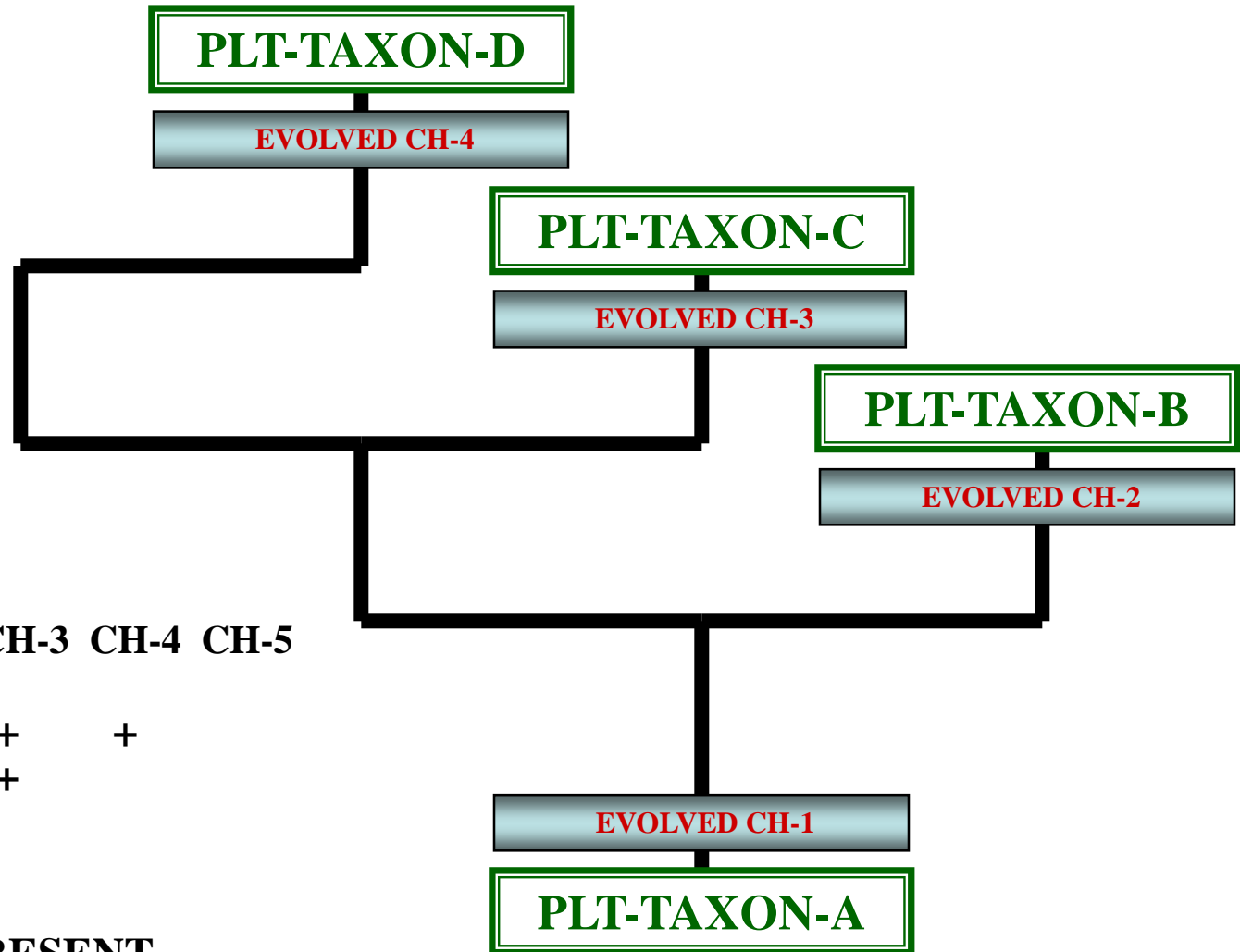
DATA MATRIX

TAXON CH-1 CH-2 CH-3 CH-4 CH-5

TAXON-C	+	+	+		
TAXON-B	+	+			
TAXON-A	+				

+ = CHARACTER PRESENT

PHYLOGRAM

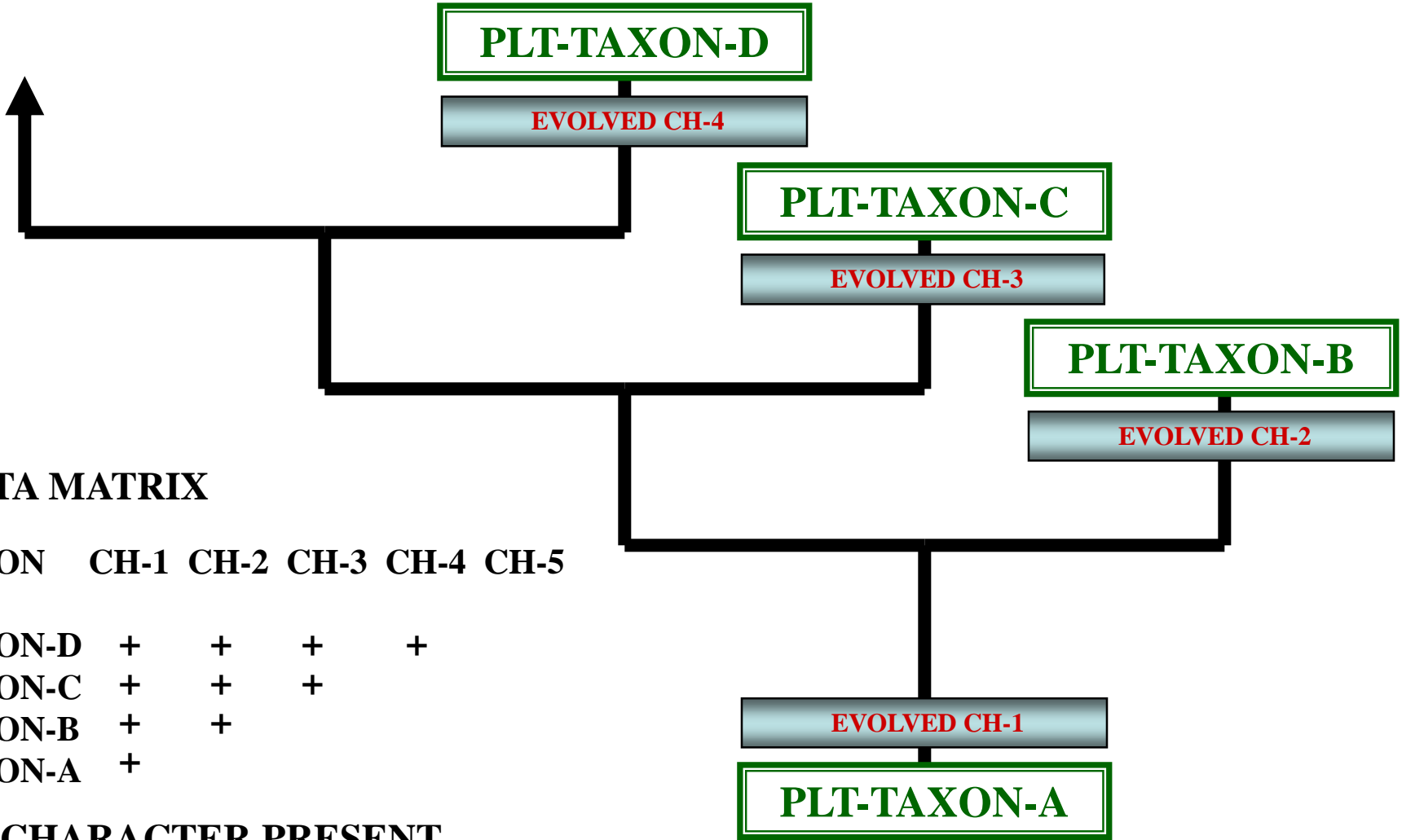


DATA MATRIX

TAXON	CH-1	CH-2	CH-3	CH-4	CH-5
TAXON-D	+	+	+	+	
TAXON-C	+	+	+		
TAXON-B	+	+			
TAXON-A	+				

+ = CHARACTER PRESENT

PHYLOGRAM

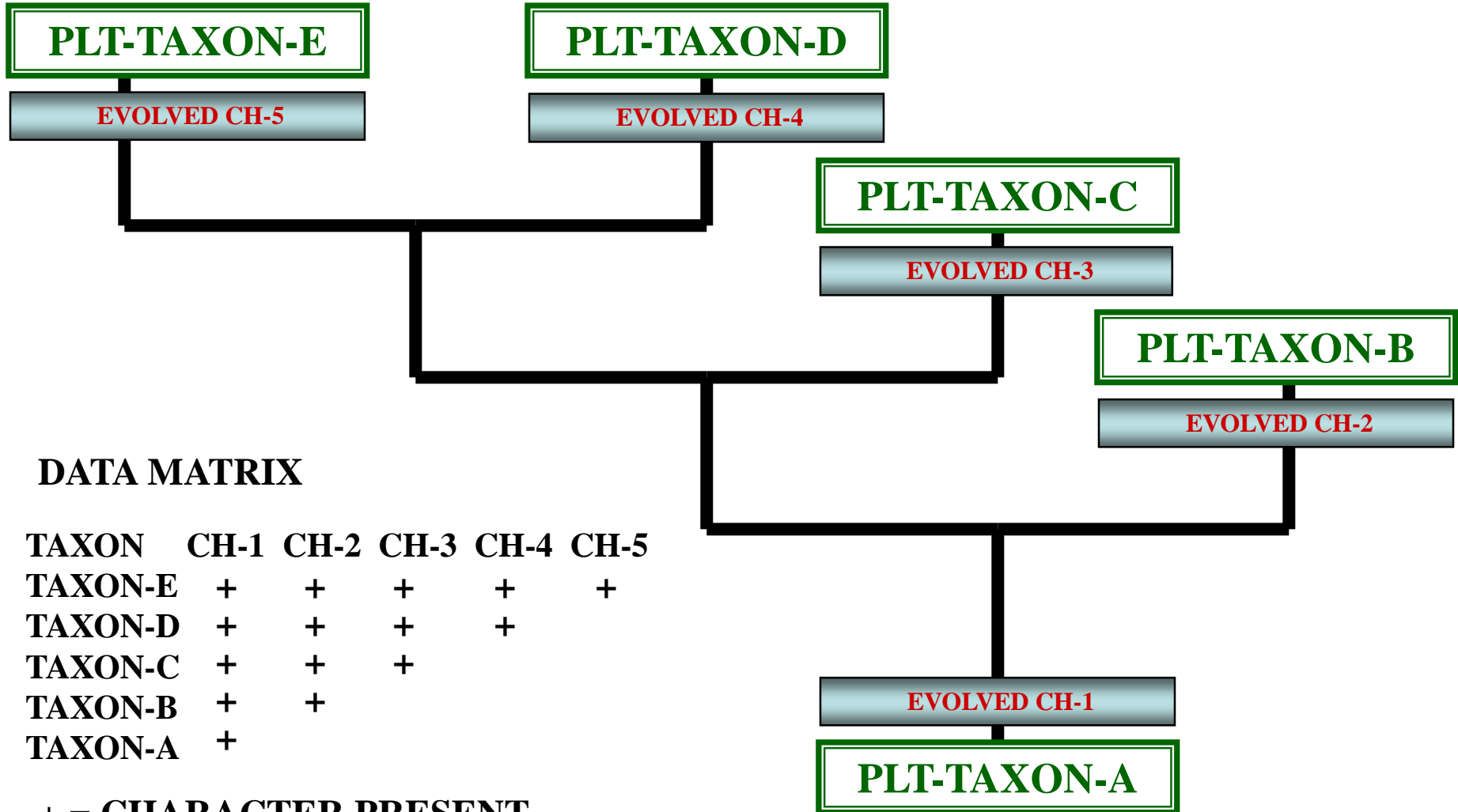


DATA MATRIX

TAXON	CH-1	CH-2	CH-3	CH-4	CH-5
TAXON-D	+	+	+	+	
TAXON-C	+	+	+		
TAXON-B	+	+			
TAXON-A	+				

+ = CHARACTER PRESENT

PHYLOGRAM



DATA MATRIX

TAXON	CH-1	CH-2	CH-3	CH-4	CH-5
TAXON-E	+	+	+	+	+
TAXON-D	+	+	+	+	
TAXON-C	+	+	+		
TAXON-B	+	+			
TAXON-A	+				

+ = CHARACTER PRESENT



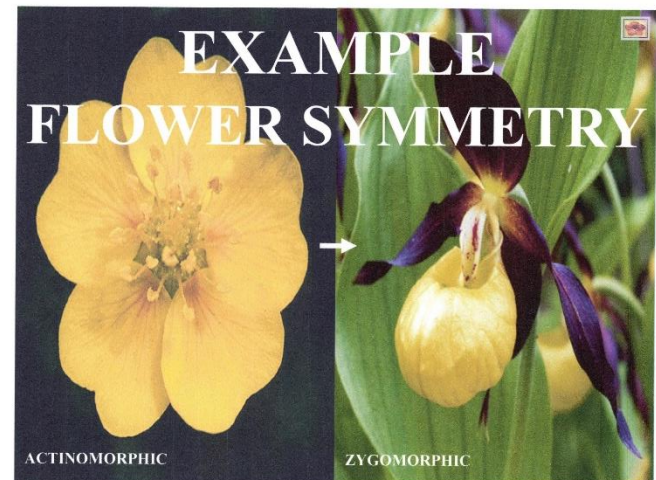
PHYLOGRAM

GENERATED FREE-STYCLE

DATA MATRIX

TAXON	CH-1	CH-2	CH-3	CH-4	CH-5
TAXON-E					+
TAXON-D				+	+
TAXON-C			+	+	+
TAXON-B		+	+	+	+
TAXON-A	+	+	+	+	+

+ = CHARACTER PRESENT





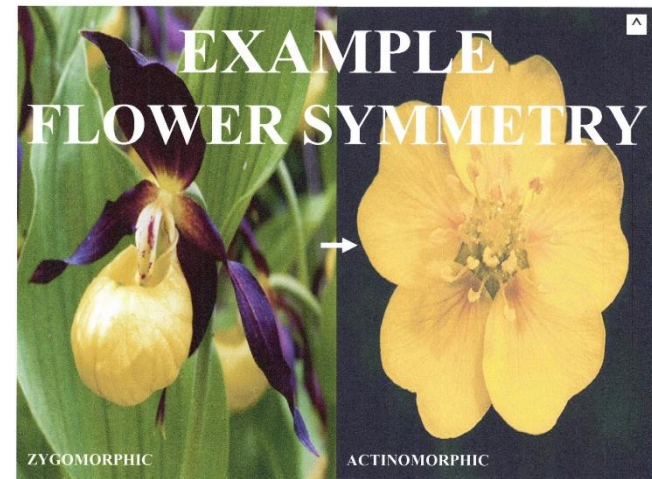
PHYLOGRAM

GENERATED FREE-STYCLE

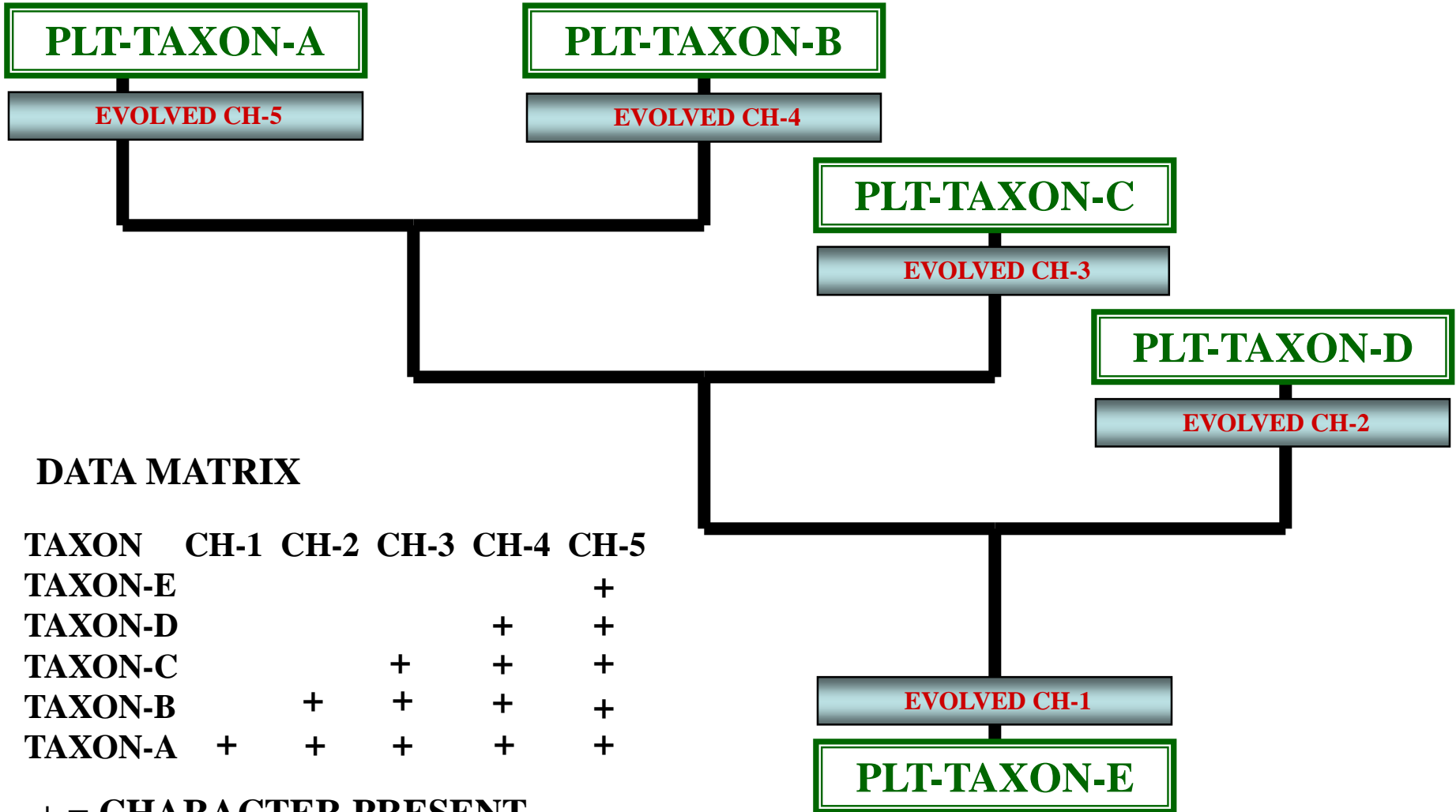
DATA MATRIX

TAXON	CH-1	CH-2	CH-3	CH-4	CH-5
TAXON-E					+
TAXON-D				+	+
TAXON-C			+	+	+
TAXON-B		+	+	+	+
TAXON-A	+	+	+	+	+

+ = CHARACTER PRESENT



PHYLOGRAM



DATA MATRIX

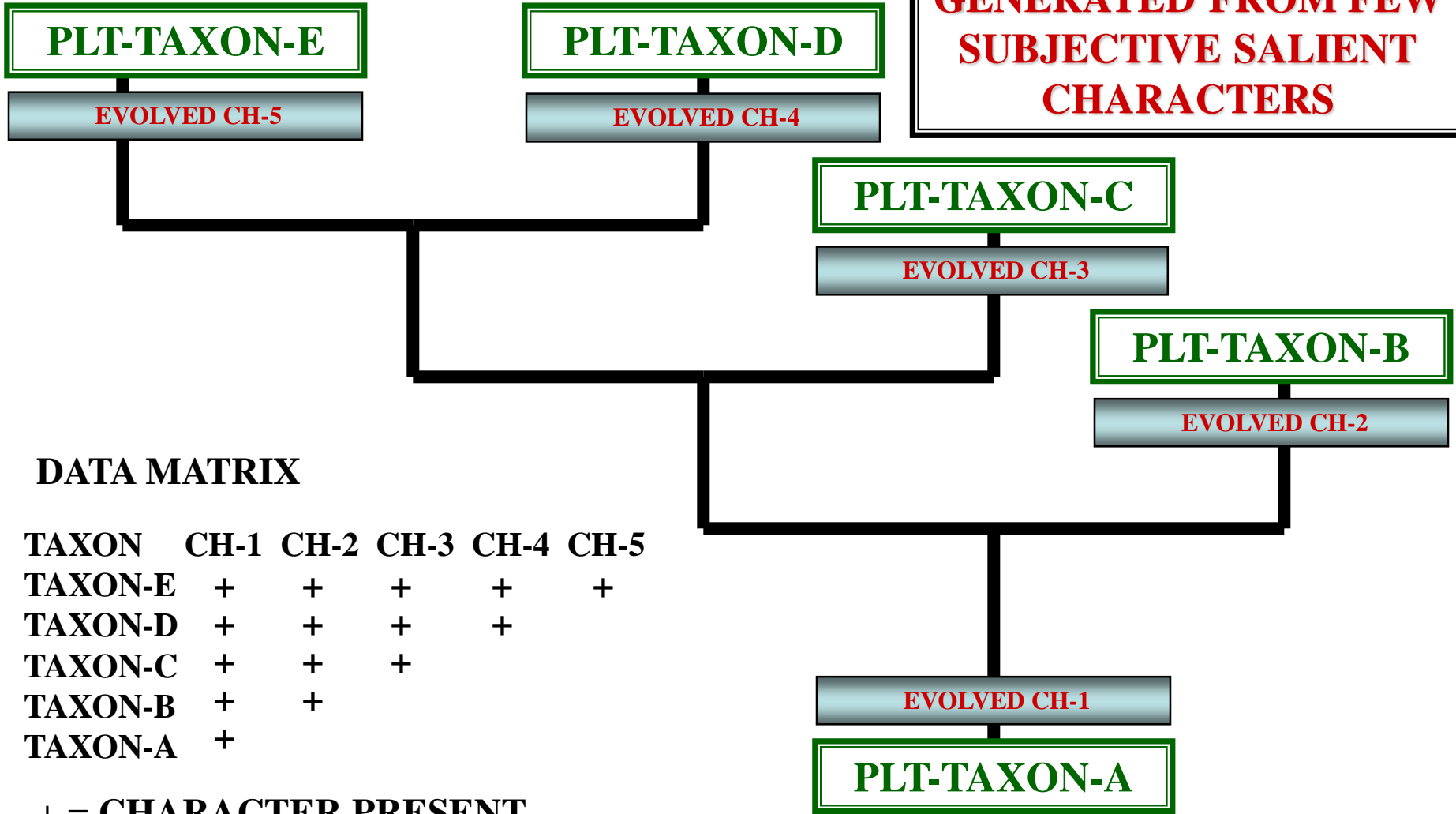
TAXON	CH-1	CH-2	CH-3	CH-4	CH-5
TAXON-E				+	+
TAXON-D				+	+
TAXON-C			+	+	+
TAXON-B		+	+	+	+
TAXON-A	+	+	+	+	+

+ = CHARACTER PRESENT

**CLASSICAL
PHYLOGENETIC
CLASSIFICATION
DISADVANTAGES**

PHYLOGRAM

**PHYLOGRAM
GENERATED FROM FEW
SUBJECTIVE SALIENT
CHARACTERS**

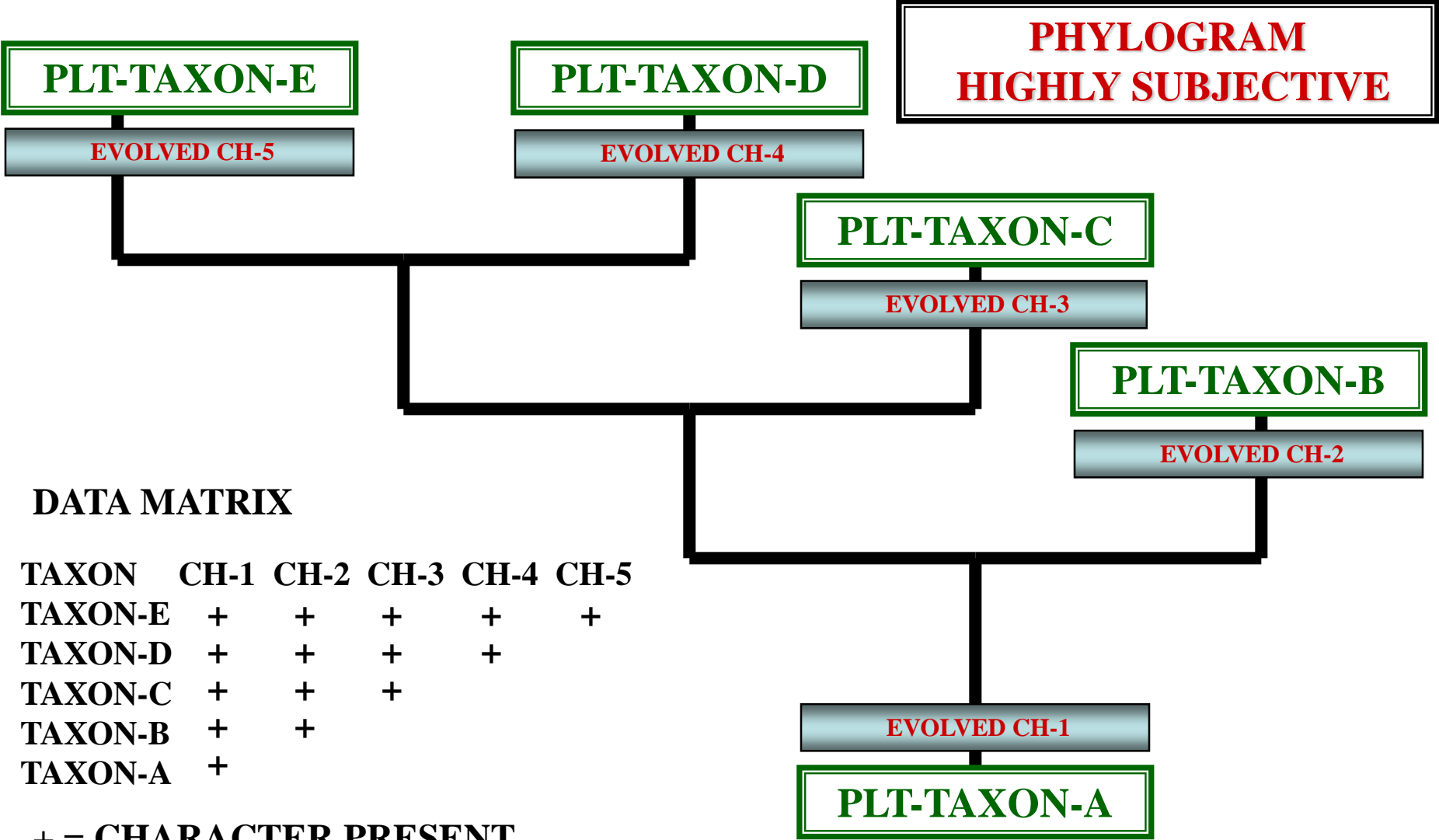


DATA MATRIX

TAXON	CH-1	CH-2	CH-3	CH-4	CH-5
TAXON-E	+	+	+	+	+
TAXON-D	+	+	+	+	
TAXON-C	+	+	+		
TAXON-B	+	+			
TAXON-A	+				

+ = CHARACTER PRESENT

PHYLOGRAM



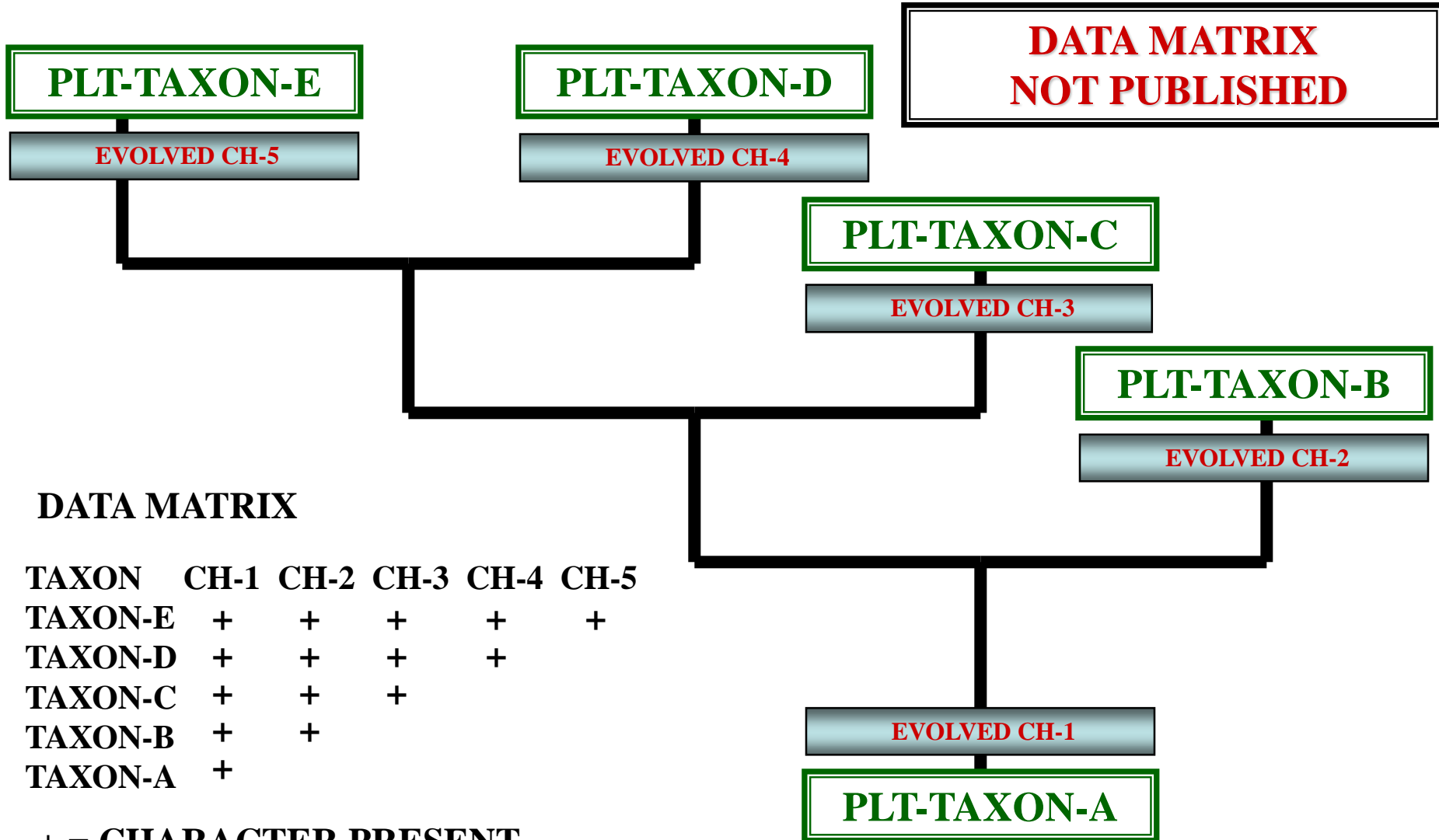
DATA MATRIX

TAXON	CH-1	CH-2	CH-3	CH-4	CH-5
TAXON-E	+	+	+	+	+
TAXON-D	+	+	+	+	
TAXON-C	+	+	+		
TAXON-B	+	+			
TAXON-A	+				

+ = CHARACTER PRESENT

PHYLOGRAM

DM



DATA MATRIX

TAXON	CH-1	CH-2	CH-3	CH-4	CH-5
TAXON-E	+	+	+	+	+
TAXON-D	+	+	+	+	
TAXON-C	+	+	+		
TAXON-B	+	+			
TAXON-A	+				

+ = CHARACTER PRESENT

DATA MATRIX

PLT-TAXON	CH-1	CH-2	CH-3	CH-4	CH-5
PLT-TAXON-E	+	+	+	+	+
PLT-TAXON-D	+	+	+	+	-
PLT-TAXON-C	+	+	+	-	-
PLT-TAXON-B	+	+	-	-	-
PLT-TAXON-A	+	-	-	-	-

+ = CHARACTER PRESENT

DATA MATRIX



PLT-TAXON	CH-1	CH-2	CH-3	CH-4	CH-5
-----------	------	------	------	------	------

**DATA MATRIX
NOT PUBLISHED
WITH PHYLOGRAM**

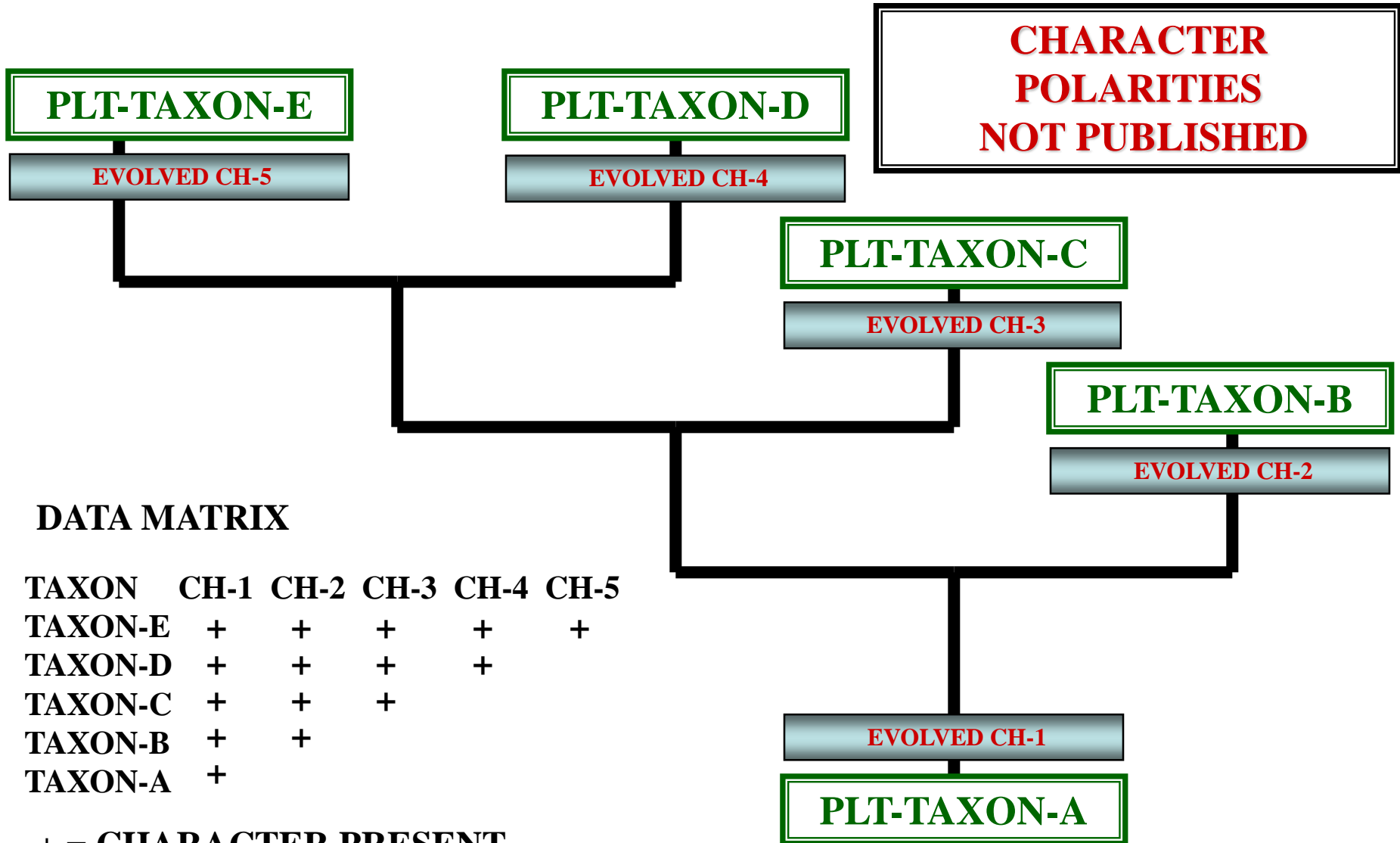
PLT-TAXON-A	+	-	-	-	-
-------------	---	---	---	---	---

+ = CHARACTER PRESENT

PHYLOGRAM

M

+



DATA MATRIX

TAXON	CH-1	CH-2	CH-3	CH-4	CH-5
TAXON-E	+	+	+	+	+
TAXON-D	+	+	+	+	
TAXON-C	+	+	+		
TAXON-B	+	+			
TAXON-A	+				

+ = CHARACTER PRESENT

DATA MATRIX

CHARACTER

CHARACTER

POLARITIES

NOT PUBLISHED

WITH PHYLOGRAM

ACTINOMORPHIC



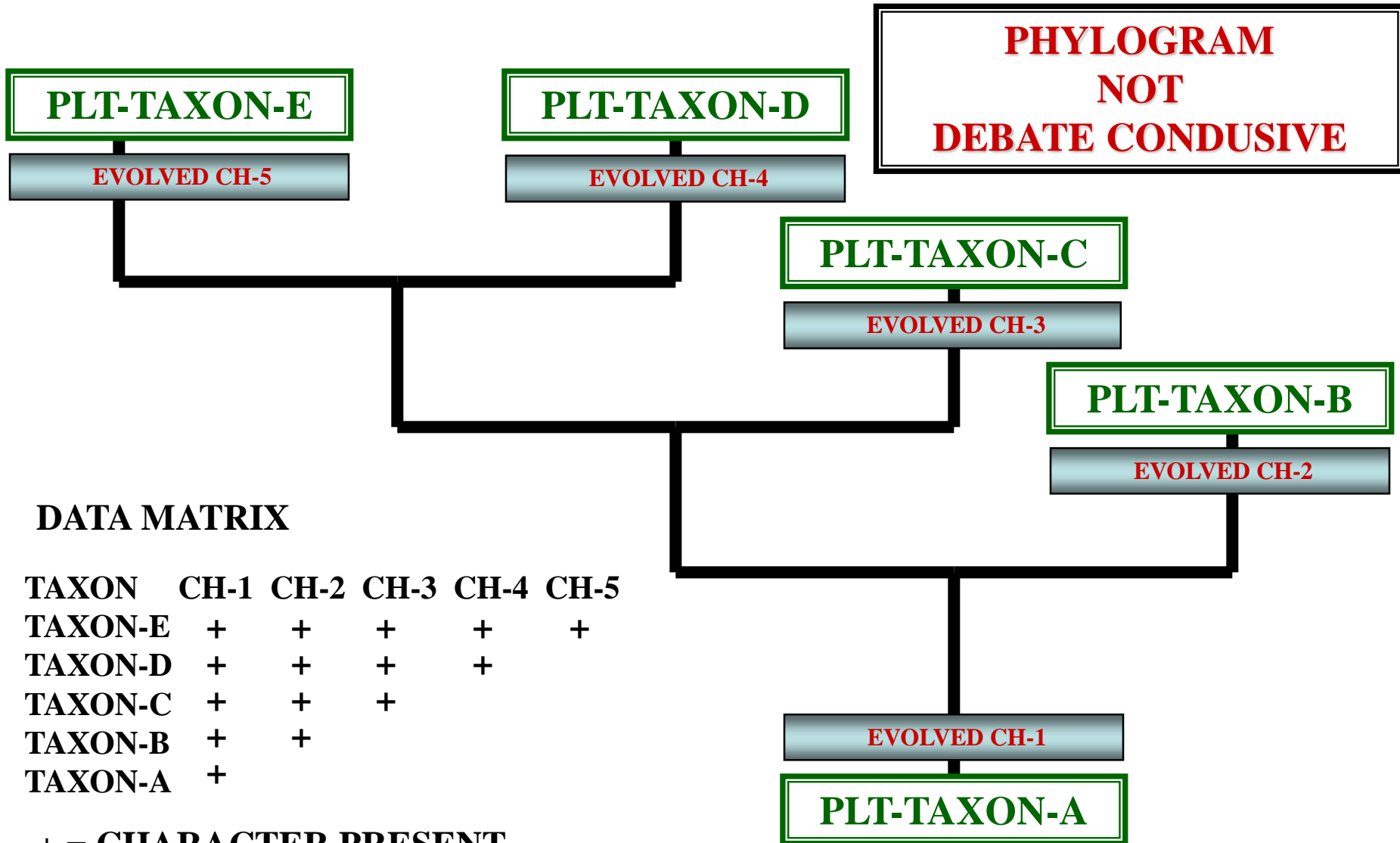
ZYGOMORPHIC

PRIMITIVE PLT



ADVANCED PLT

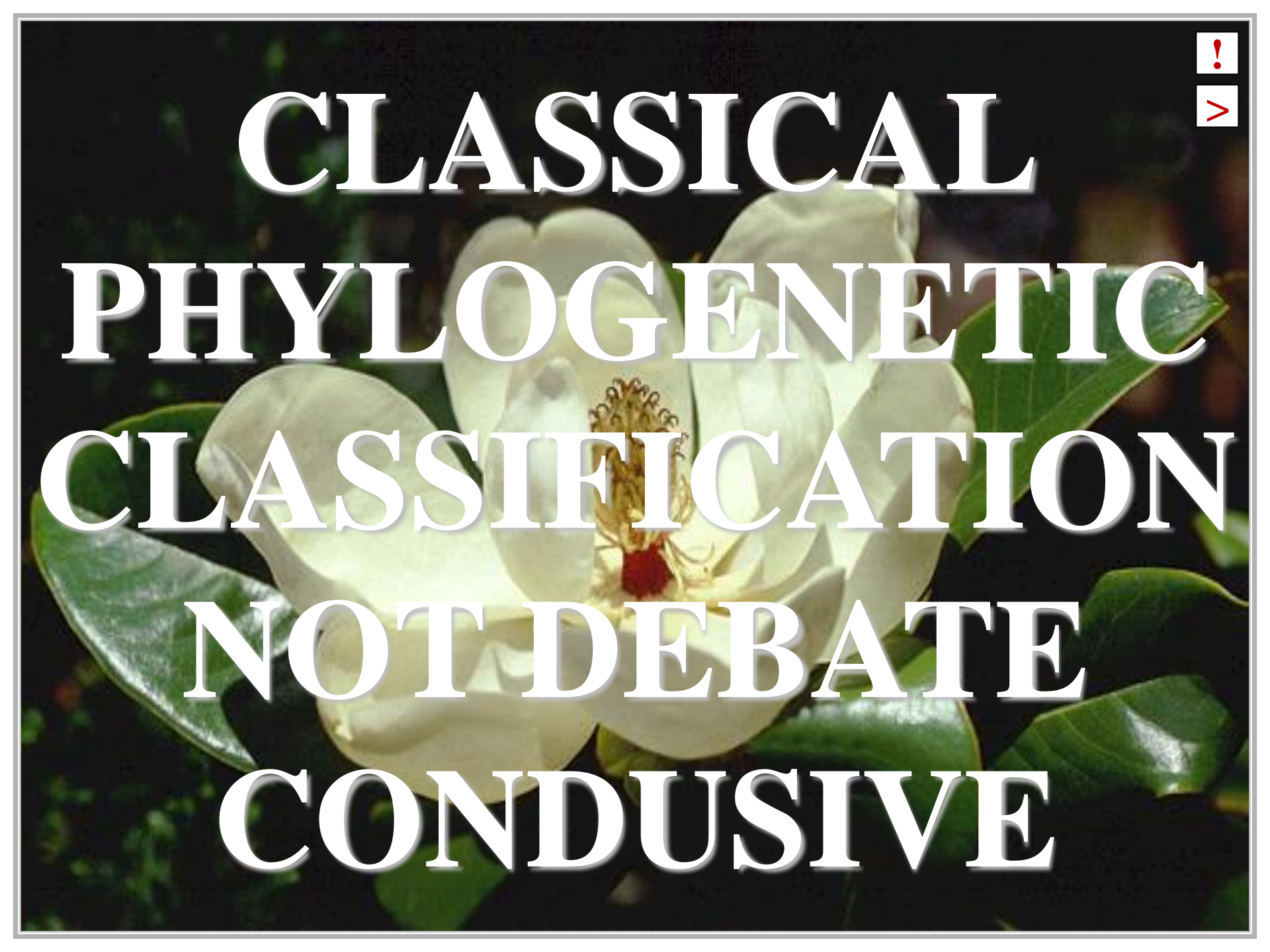
PHYLOGRAM



DATA MATRIX

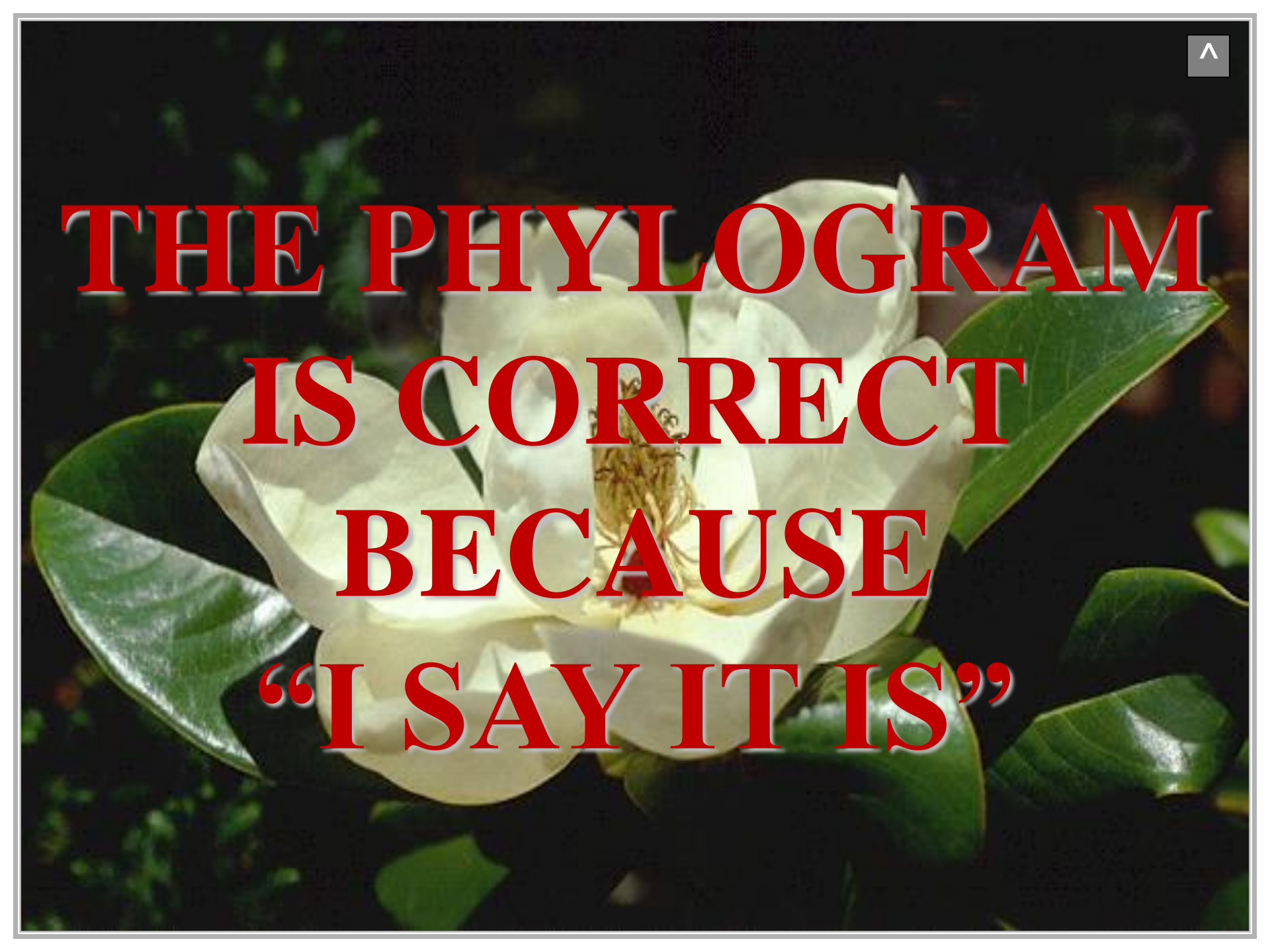
TAXON	CH-1	CH-2	CH-3	CH-4	CH-5
TAXON-E	+	+	+	+	+
TAXON-D	+	+	+	+	
TAXON-C	+	+	+		
TAXON-B	+	+			
TAXON-A	+				

+ = CHARACTER PRESENT



**CLASSICAL
PHYLOGENETIC
CLASSIFICATION
NOT DEBATE
CONDUSIVE**





**THE PHYLOGRAM
IS CORRECT
BECAUSE
“I SAY IT IS”**

CLADISTIC PHYLOGENETIC CLASSIFICATION

**CLADISTIC
PHYLOGENETIC
CLASSIFICATION**



CLADISTIC PHYLOGENETIC CLASSIFICATION

CONTEMPORARY PHYLOGENETIC METHOD

CLADISTIC PHYLOGENETIC CLASSIFICATION



CLADISTIC PHYLOGENETIC CLASSIFICATION

CONTEMPORARY PHYLOGENETIC METHOD

PRACTICED SINCE COMPUTERS

CLADISTIC PHYLOGENETIC CLASSIFICATION



CLADISTIC PHYLOGENETIC CLASSIFICATION

CONTEMPORARY PHYLOGENETIC METHOD

PRACTICED SINCE COMPUTERS

MORE OBJECTIVE THAN CLASSICAL

CLADISTIC PHYLOGENETIC CLASSIFICATION

CLADISTIC TERMS

CLADE

CLADE

PHYLOGENETICALLY RELATED TAXA

CLADE

**PLESIOMORPHIC
CHARACTER
STATE**



**PLESIOMORPHIC
CHARACTER
STATE**

NON-DERIVED CHARACTER STATE

**PLESIOMORPHIC
CHARACTER
STATE**

**PLESIOMORPHIC
CHARACTER
STATE**

NON-DERIVED CHARACTER STATE

PRIMITIVE CHARACTER STATE

**PLESIOMORPHIC
CHARACTER
STATE**

**APOMORPHIC
CHARACTER
STATE**



**APOMORPHIC
CHARACTER
STATE**

DERIVED CHARACTER STATE

**APOMORPHIC
CHARACTER
STATE**

**APOMORPHIC
CHARACTER
STATE**

DERIVED CHARACTER STATE

ADVANCED CHARACTER STATE

**APOMORPHIC
CHARACTER
STATE**

**SYMPLESIOMORPHIC
CHARACTER
STATE**

**SYMPLESIOMORPHIC
CHARACTER
STATE**

**SHARED
PLESIOMORPHIC
CHARACTER STATE**

**SYMPLESIOMORPHIC
CHARACTER
STATE**

**SYNAPOMORPHIC
CHARACTER
STATE**

**SYMPLESIOMORPHIC
CHARACTER
STATE**

**SHARED
SYNAPOMORPHIC
CHARACTER STATE**

**SYMPLESIOMORPHIC
CHARACTER
STATE**

**AUTAPOMORPHIC
CHARACTER
STATE**

**AUTAPOMORPHIC
CHARACTER
STATE**

**DIAGNOSTIC
APOMORPHIC
CHARACTER STATE**

**AUTAPOMORPHIC
CHARACTER
STATE**

IN-GROUP



**CLADISTIC
IN-GROUP**

PRIMARY STUDY GROUP

**CLADISTIC
IN-GROUP**



CLADISTIC IN-GROUP

**PRIMARY STUDY GROUP
CONSIDERED DESCENDANT TO OUT-GROUP**

CLADISTIC IN-GROUP



CLADISTIC IN-GROUP

**PRIMARY STUDY GROUP
CONSIDERED DESCENDANT TO OUT-GROUP
SUGGESTED VIA FOSSIL RECORD**

CLADISTIC IN-GROUP



CLADISTIC IN-GROUP

**PRIMARY STUDY GROUP
CONSIDERED DESCENDANT TO OUT-GROUP
SUGGESTED VIA FOSSIL RECORD
BEARS APOMORPHIC CHARACTER STATES**

CLADISTIC IN-GROUP

CLADISTIC IN-GROUP

PRIMARY STUDY GROUP
CONSIDERED DESCENDANT TO OUT-GROUP
SUGGESTED VIA FOSSIL RECORD
BEARS APOMORPHIC CHARACTER STATES
COMPARED WITH OUT-GROUP

CLADISTIC IN-GROUP

OUT-GROUP



**CLADISTIC
OUT-GROUP**

SECONDARY STUDY GROUP

**CLADISTIC
OUT-GROUP**



CLADISTIC OUT-GROUP

**SECONDARY STUDY GROUP
CONSIDERED ANCESTRAL TO IN-GROUP**

CLADISTIC OUT-GROUP



CLADISTIC OUT-GROUP

**SECONDARY STUDY GROUP
CONSIDERED ANCESTRAL TO IN-GROUP
SUGGESTED VIA FOSSIL RECORD**

CLADISTIC OUT-GROUP



CLADISTIC OUT-GROUP

SECONDARY STUDY GROUP
CONSIDERED ANCESTRAL TO IN-GROUP
SUGGESTED VIA FOSSIL RECORD
BEARS PLEISIOMORPHIC CHARACTER STATES

CLADISTIC OUT-GROUP



CLADISTIC OUT-GROUP

SECONDARY STUDY GROUP
CONSIDERED ANCESTRAL TO IN-GROUP
SUGGESTED VIA FOSSIL RECORD
BEARS PLEISIOMORPHIC CHARACTER STATES
COMPARED WITH IN-GROUP

CLADISTIC OUT-GROUP

DATA MATRIX

DATA MATRIX



PLT-TAXON	CH-1	CH-2	CH-3	CH-4	CH-5
PLT-TAXON-E	+	+	+	+	+
PLT-TAXON-D	+	+	+	+	-
PLT-TAXON-C	+	+	+	-	-
PLT-TAXON-B	+	+	-	-	-
PLT-TAXON-A	+	-	-	-	-

+ = CHARACTER PRESENT

SELECT MANY SALIENT PHYLOGENTIC CHARACTERS

DATA MATRIX



PLT-TAXON	CH-1	CH-2	CH-3	CH-4	CH-5
PLT-TAXON-E	+	+	+	+	+
PLT-TAXON-D	+	+	+	+	-
PLT-TAXON-C	+	+	+	-	-
PLT-TAXON-B	+	+	-	-	-
PLT-TAXON-A	+	-	-	-	-

+ = CHARACTER PRESENT

LESS SUBJECTIVE CHARACTER BIAS

DATA MATRIX

PLT-TAXON	CH-1	CH-2	CH-3	CH-4	CH-5
PLT-TAXON-E	+	+	+	+	+
PLT-TAXON-D	+	+	+	+	-
PLT-TAXON-C	+	+	+	-	-
PLT-TAXON-B	+	+	-	-	-
PLT-TAXON-A	+	-	-	-	-

+ = CHARACTER PRESENT

BECAUSE MANY SALIENT CHARACTERS ARE USED

DATA MATRIX



PLT-TAXON	CH-1	CH-2	CH-3	CH-4	CH-5
PLT-TAXON-E	+	+	+	+	+
PLT-TAXON-D	+	+	+	+	-
PLT-TAXON-C	+	+	+	-	-
PLT-TAXON-B	+	+	-	-	-
PLT-TAXON-A	+	-	-	-	-

+ = CHARACTER PRESENT

MUST DETERMINE CORRECT CHARACTER POLARITY

CHARACTER POLARITY



CHARACTER

POLARITY

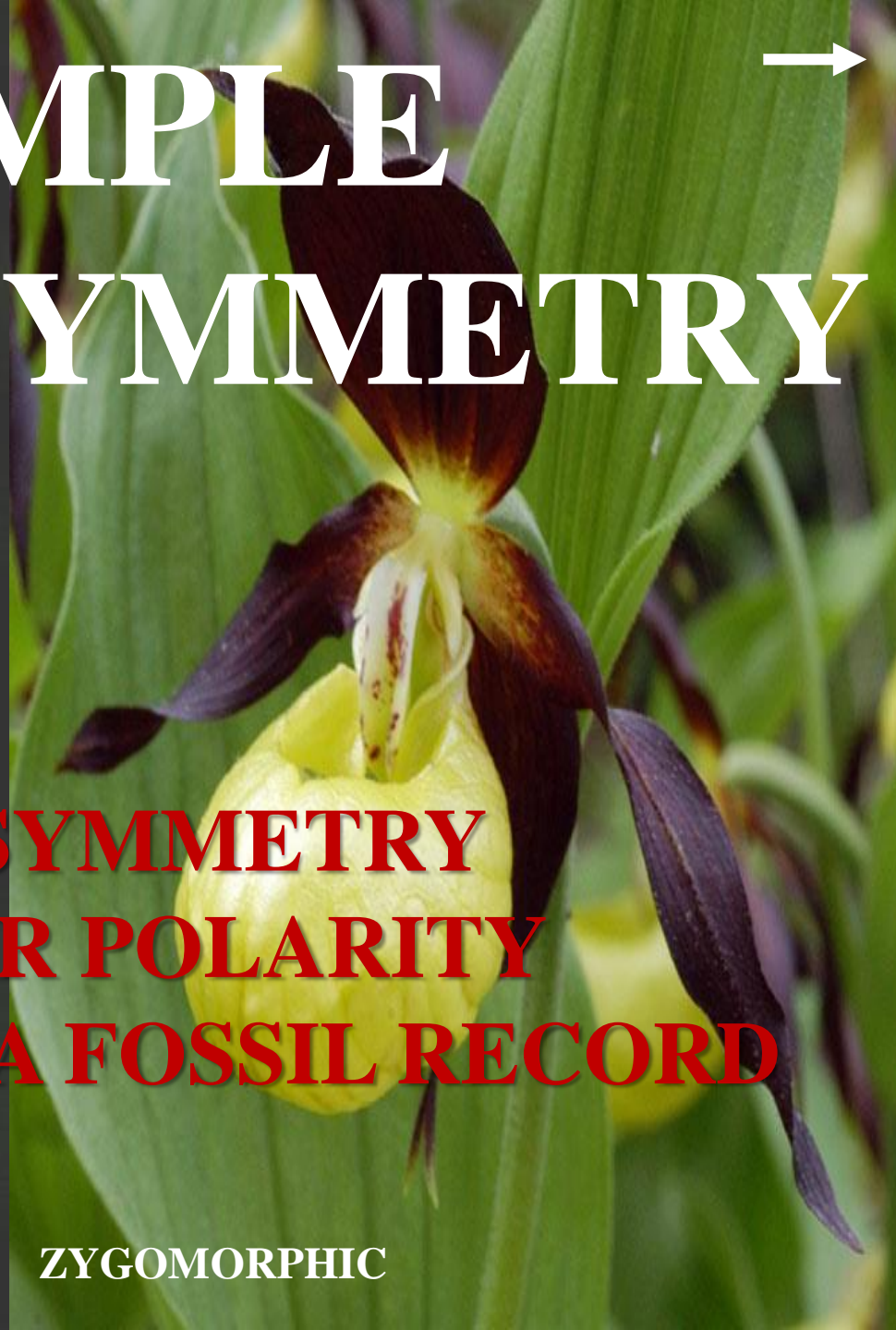
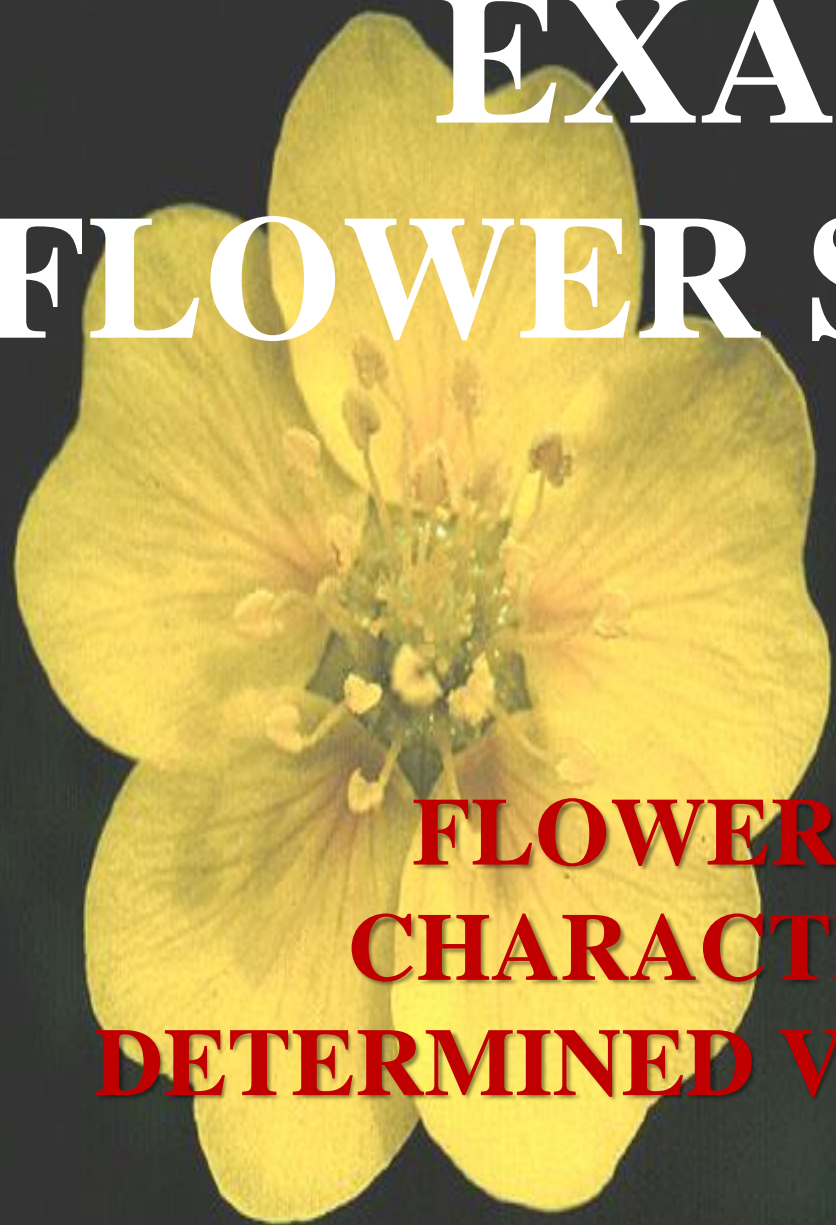
!!!*DO NOT COPY*!!!

EXAMPLE

FLOWER SYMMETRY



EXAMPLE FLOWER SYMMETRY

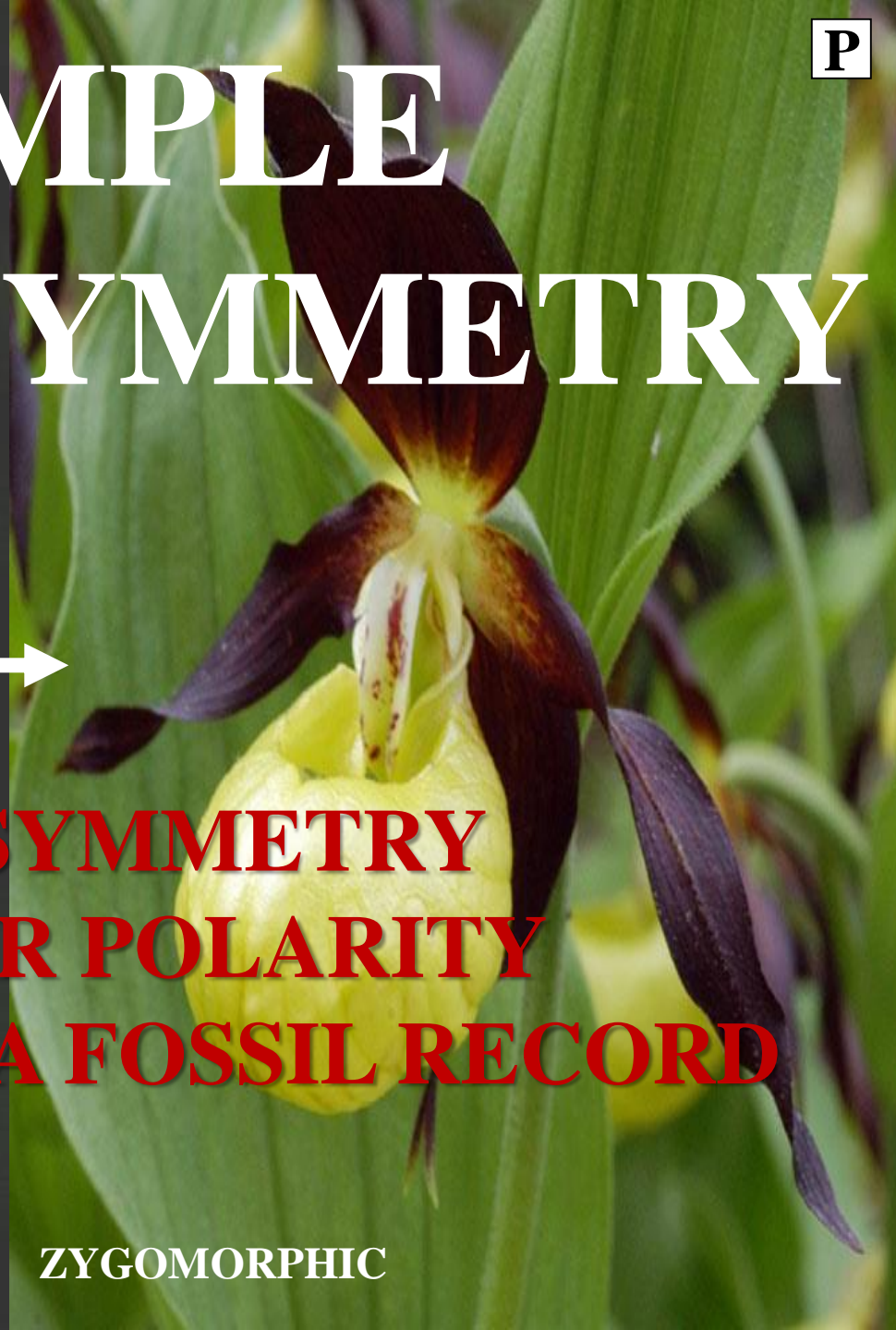


**FLOWER SYMMETRY
CHARACTER POLARITY
DETERMINED VIA FOSSIL RECORD**

ACTINOMORPHIC

ZYGOMORPHIC

EXAMPLE FLOWER SYMMETRY

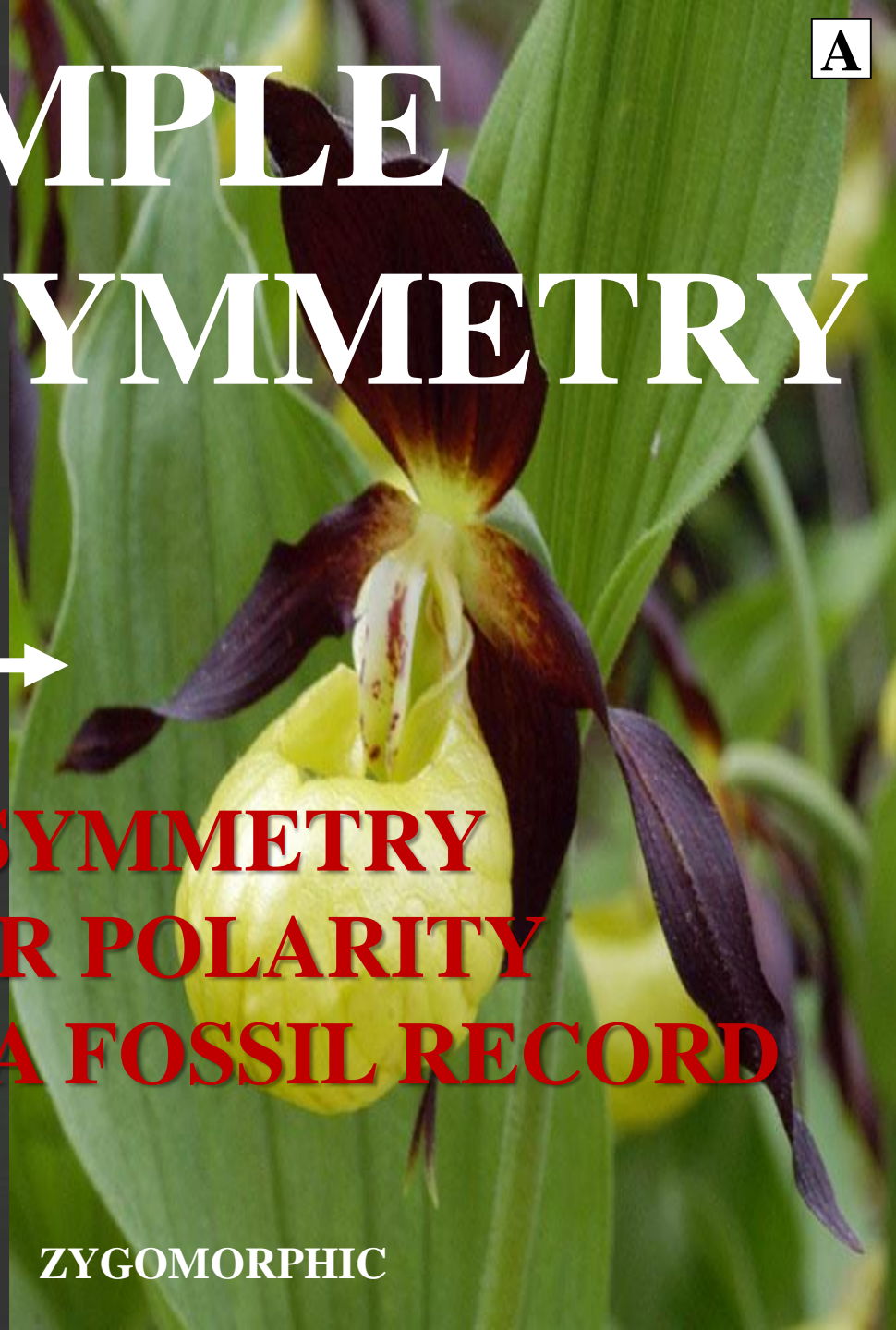
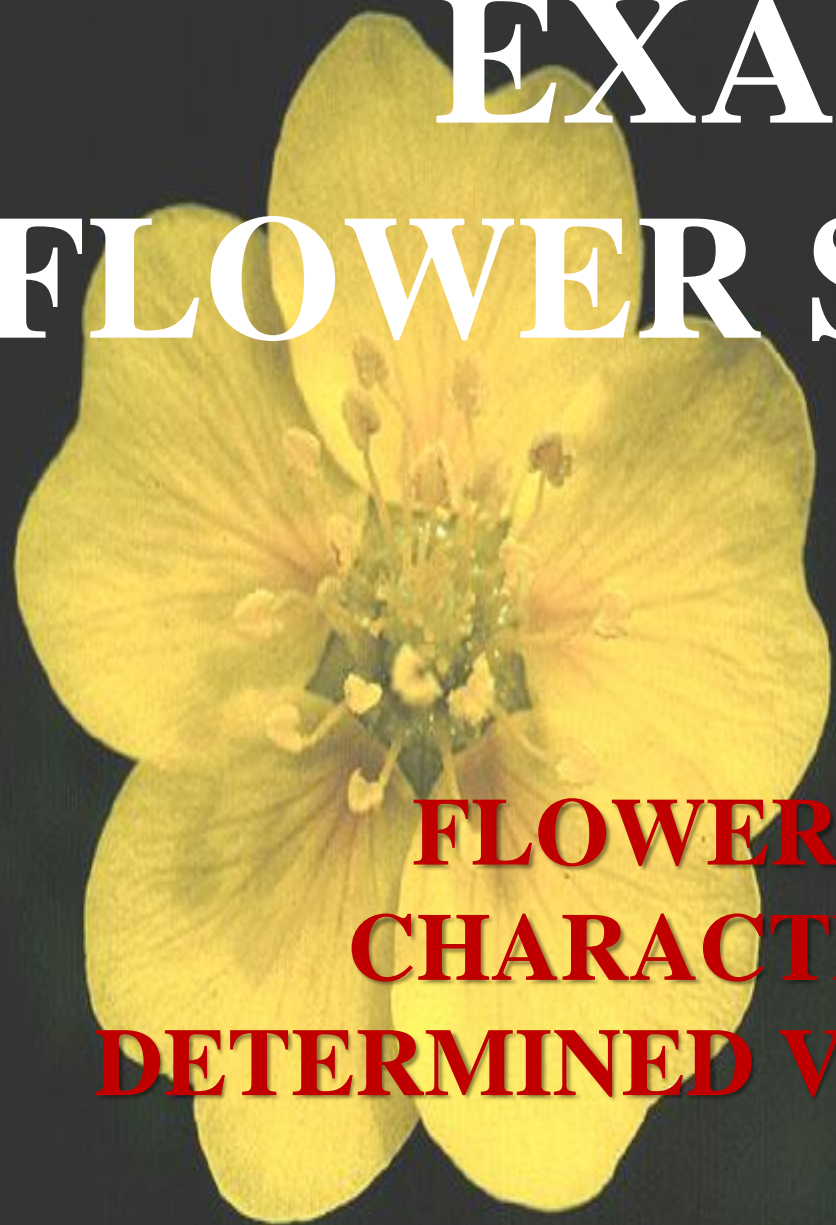


**FLOWER SYMMETRY
CHARACTER POLARITY
DETERMINED VIA FOSSIL RECORD**

ACTINOMORPHIC

ZYGOMORPHIC

EXAMPLE FLOWER SYMMETRY

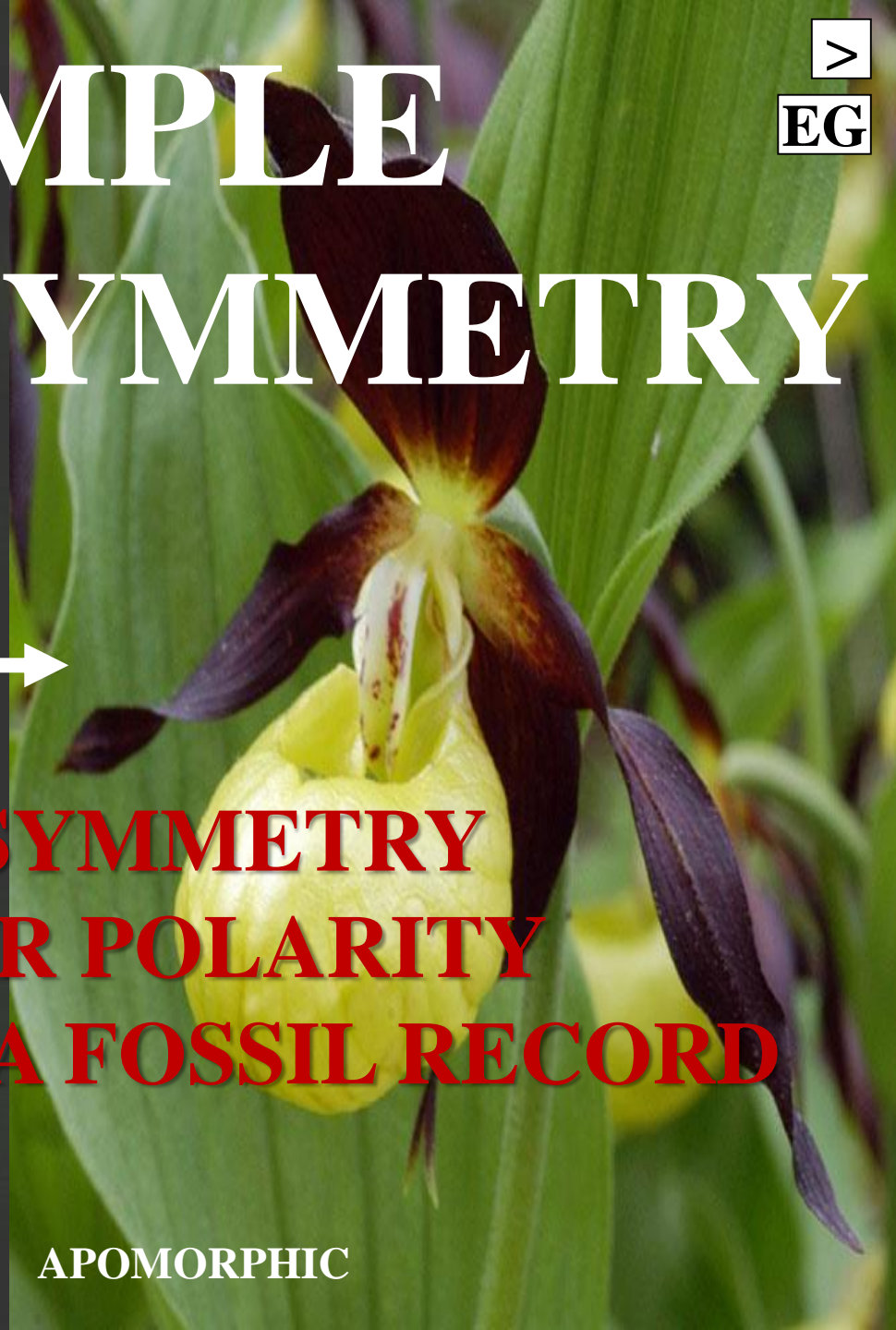
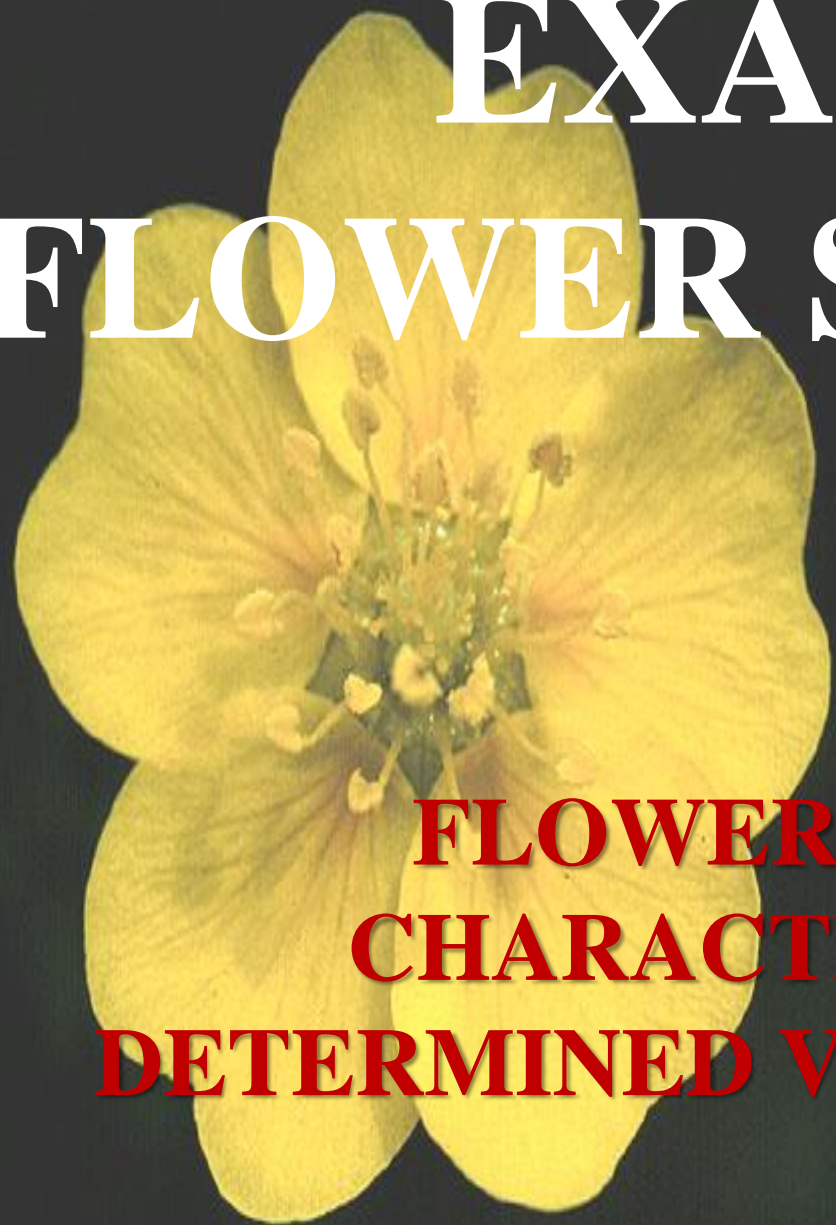


**FLOWER SYMMETRY
CHARACTER POLARITY
DETERMINED VIA FOSSIL RECORD**

PLEISOMORPHIC

ZYGOMORPHIC

EXAMPLE FLOWER SYMMETRY



**FLOWER SYMMETRY
CHARACTER POLARITY
DETERMINED VIA FOSSIL RECORD**

PLEISOMORPHIC

APOMORPHIC



DATA MATRIX CHARACTER POLARITIES

WOODY



HERBACEOUS



DATA MATRIX CHARACTER POLARITIES

WOODY



HERBACEOUS

SIMPLE LEAF



COMPOUND LEAF



DATA MATRIX CHARACTER POLARITIES

WOODY	→	HERBACEOUS
SIMPLE LEAF	→	COMPOUND LEAF
STIPULES PRESENT	→	STIPULES ABSENT



DATA MATRIX CHARACTER POLARITIES

WOODY	→	HERBACEOUS
SIMPLE LEAF	→	COMPOUND LEAF
STIPULES PRESENT	→	STIPULES ABSENT
ALTERNATE	→	OPPOSITE
PHYLLOTAXY		PHYLLOTAXY

DATA MATRIX CHARACTER POLARITIES

WOODY	→	HERBACEOUS
SIMPLE LEAF	→	COMPOUND LEAF
STIPULES PRESENT	→	STIPULES ABSENT
ALTERNATE	→	OPPOSITE
PHYLLOTAXY		PHYLLOTAXY
ACTINOMORPHIC	→	ZYGOMORPHIC

DATA MATRIX CHARACTER POLARITIES

WOODY	→	HERBACEOUS
SIMPLE LEAF	→	COMPOUND LEAF
STIPULES PRESENT	→	STIPULES ABSENT
ALTERNATE	→	OPPOSITE
PHYLLOTAXY		PHYLLOTAXY
ACTINOMORPHIC	→	ZYGOMORPHIC
PRIMITIVE	→	ADVANCED

DATA MATRIX CHARACTER POLARITIES

- WOODY** → **HERBACEOUS**
- SIMPLE LEAF** → **COMPOUND LEAF**
- STIPULES PRESENT** → **STIPULES ABSENT**
- ALTERNATE** → **OPPOSITE**
- PHYLLOTAXY** → **PHYLLOTAXY**
- ACTINOMORPHIC** → **ZYGOMORPHIC**
- NON-DERIVED** → **ADVANCED**

DATA MATRIX CHARACTER POLARITIES

- WOODY** → **HERBACEOUS**
- SIMPLE LEAF** → **COMPOUND LEAF**
- STIPULES PRESENT** → **STIPULES ABSENT**
- ALTERNATE** → **OPPOSITE**
- PHYLLOTAXY** → **PHYLLOTAXY**
- ACTINOMORPHIC** → **ZYGOMORPHIC**
- PLESIOMORPHIC** → **ADVANCED**

DATA MATRIX CHARACTER POLARITIES

WOODY	→	HERBACEOUS
SIMPLE LEAF	→	COMPOUND LEAF
STIPULES PRESENT	→	STIPULES ABSENT
ALTERNATE	→	OPPOSITE
PHYLLOTAXY		PHYLLOTAXY
ACTINOMORPHIC	→	ZYGOMORPHIC
PLESIOMORPHIC	→	DERIVED

DATA MATRIX CHARACTER POLARITIES

WOODY	→	HERBACEOUS
SIMPLE LEAF	→	COMPOUND LEAF
STIPULES PRESENT	→	STIPULES ABSENT
ALTERNATE	→	OPPOSITE
PHYLLOTAXY		PHYLLOTAXY
ACTINOMORPHIC	→	ZYGOMORPHIC
PLESIOMORPHIC	→	APOMORPHIC

DATA MATRIX



PLT-TAXON	CH-1	CH-2	CH-3	CH-4	CH-5
PLT-TAXON-E	+	+	+	+	+
PLT-TAXON-D	+	+	+	+	-
PLT-TAXON-C	+	+	+	-	-
PLT-TAXON-B	+	+	-	-	-
PLT-TAXON-A	+	-	-	-	-

+ = CHARACTER PRESENT

MUST DETERMINE CHARACTER POLARITY OF ALL CHARACTERS

**CLADISTIC
PHYLOGENETIC
DENDROGRAM**

CLADOGRAM