



# **CLADOGRAM DENDROGRAM**

**COMPUTER GENERATED VIA:**

# **CLADOGRAM DENDROGRAM**



**CLADOGRAM  
DENDROGRAM**

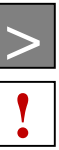
**COMPUTER GENERATED VIA:  
DATA MATRIX**

**&**

**CHARACTER POLARITIES**

**CLADOGRAM  
DENDROGRAM**

# CLADOGRAM DENDROGRAM



USING  
A POMORPHIC CHARACTERS

CLADOGRAM  
DENDROGRAM

# CLADOGRAM

# COMPUTER GENERATED

## DATA MATRIX

SPECIES	CH-1	CH-2	CH-3	CH-4	CH-5
TAXON-E	+	+	+	+	+
TAXON-D	+	+	+	+	
TAXON-C	+	+	+		
TAXON-B	+	+			
TAXON-A	+				

# CLADOGRAM

# COMPUTER GENERATED

## DATA MATRIX

SPECIES	CH-1	CH-2	CH-3	CH-4	CH-5
TAXON-E	+	+	+	+	+
TAXON-D	+	+	+	+	
TAXON-C	+	+	+		
TAXON-B	+	+			
TAXON-A	+	OUT-GROUP			

# CLADOGRAM

# COMPUTER GENERATED

## DATA MATRIX

SPECIES	CH-1	CH-2	CH-3	CH-4	CH-5	
TAXON-E	+	+	+	+	+	} TAXA B-E = IN GROUP
TAXON-D	+	+	+	+		
TAXON-C	+	+	+			
TAXON-B	+	+				
TAXON-A	+					

OUT-GROUP

# CLADOGRAM

## DATA MATRIX

SPECIES CH-1 CH-2 CH-3 CH-4 CH-5

TAXON-A OUT-GROUP

+ = APOMORPHIC CHARACTER

**PLT-TAXON-A**

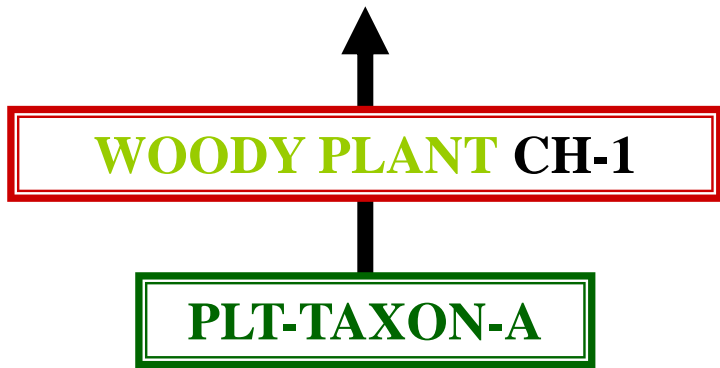
# CLADOGRAM

## DATA MATRIX

SPECIES CH-1 CH-2 CH-3 CH-4 CH-5

TAXON-A + OUT-GROUP

+ = APOMORPHIC CHARACTER





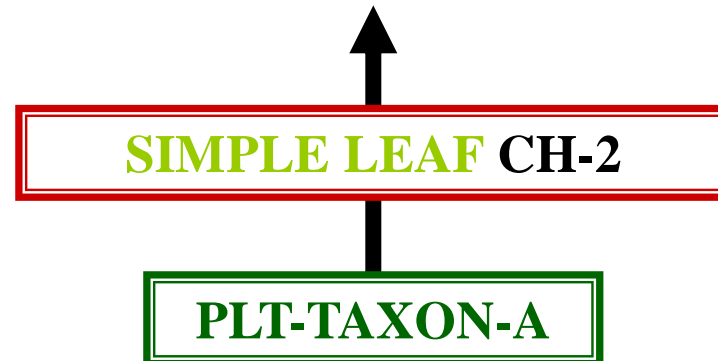
# CLADOGRAM

## DATA MATRIX

SPECIES CH-1 CH-2 CH-3 CH-4 CH-5

TAXON-A + OUT-GROUP

+ = APOMORPHIC CHARACTER



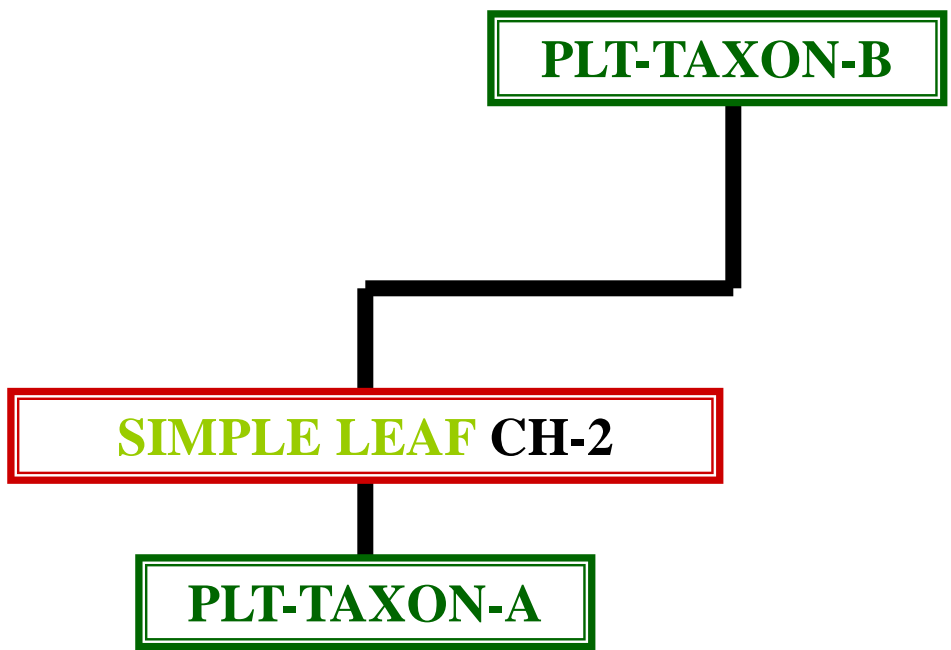
# CLADOGRAM

## DATA MATRIX

SPECIES CH-1 CH-2 CH-3 CH-4 CH-5

TAXON-A + OUT-GROUP

+ = APOMORPHIC CHARACTER



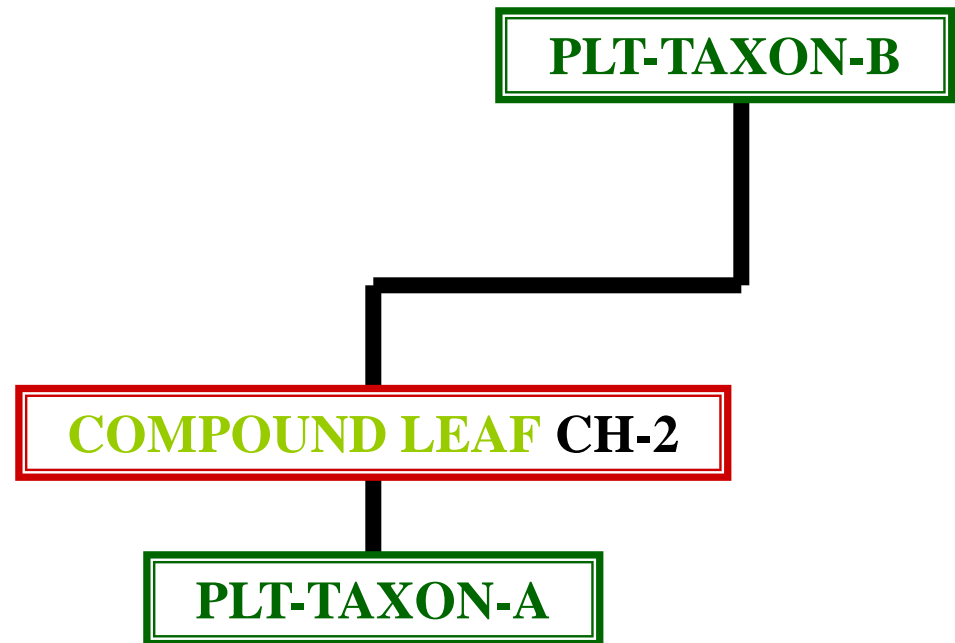
# CLADOGRAM

## DATA MATRIX

SPECIES CH-1 CH-2 CH-3 CH-4 CH-5

TAXON-B	+	+			
TAXON-A	+				OUT-GROUP

+ = APOMORPHIC CHARACTER



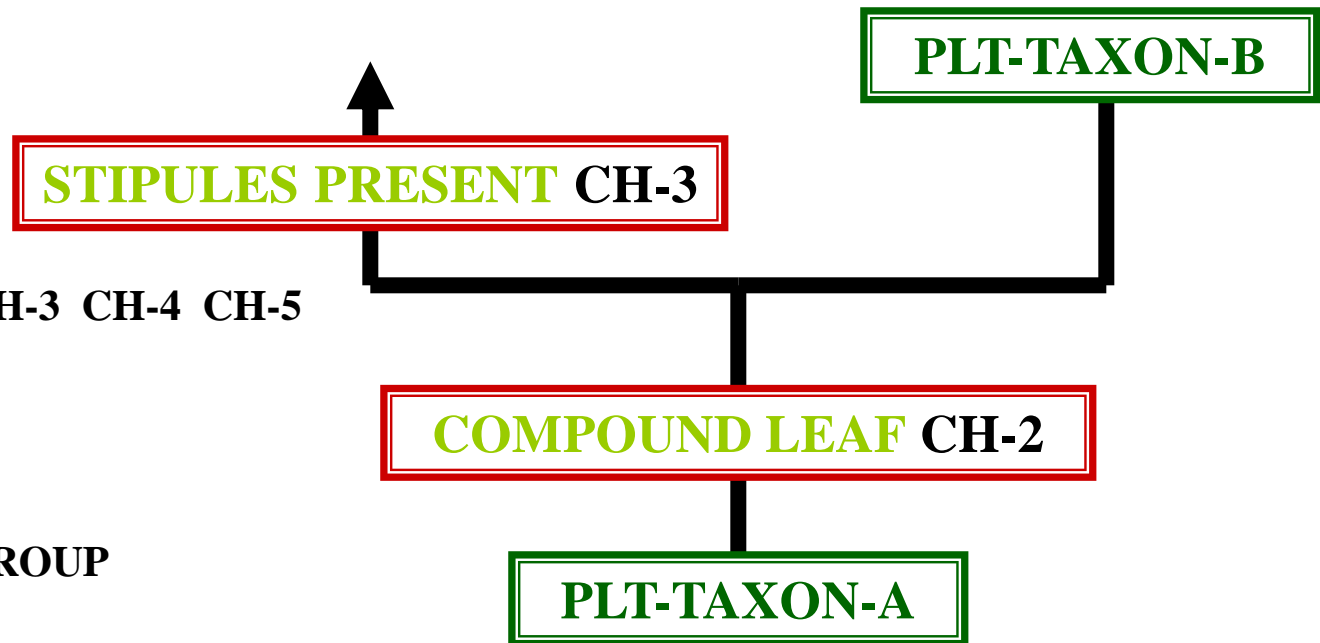
# CLADOGRAM

## DATA MATRIX

SPECIES CH-1 CH-2 CH-3 CH-4 CH-5

TAXON-B	+	+			
TAXON-A	+				OUT-GROUP

+ = APOMORPHIC CHARACTER



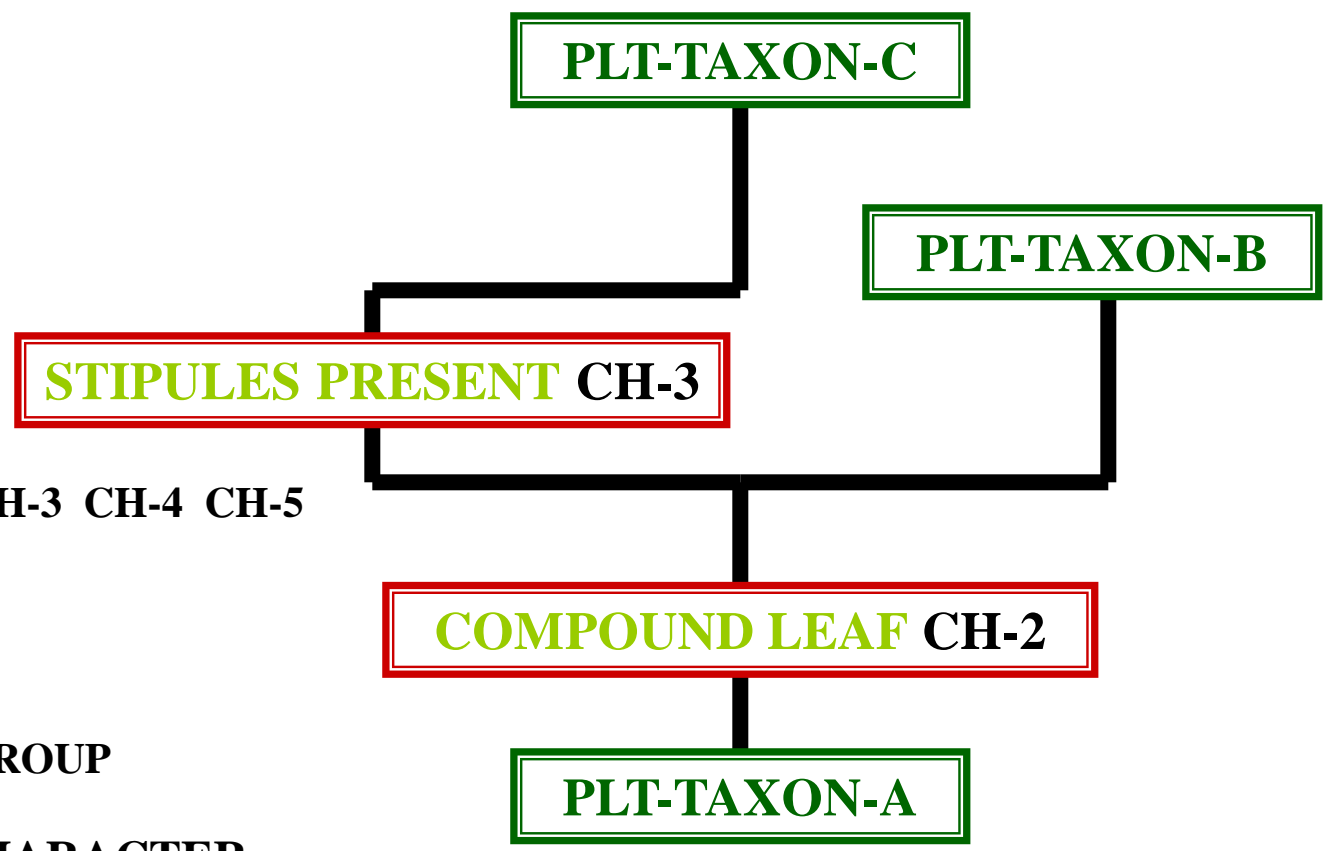
# CLADOGRAM

## DATA MATRIX

SPECIES CH-1 CH-2 CH-3 CH-4 CH-5

TAXON-B + +  
 TAXON-A + OUT-GROUP

+ = APOMORPHIC CHARACTER



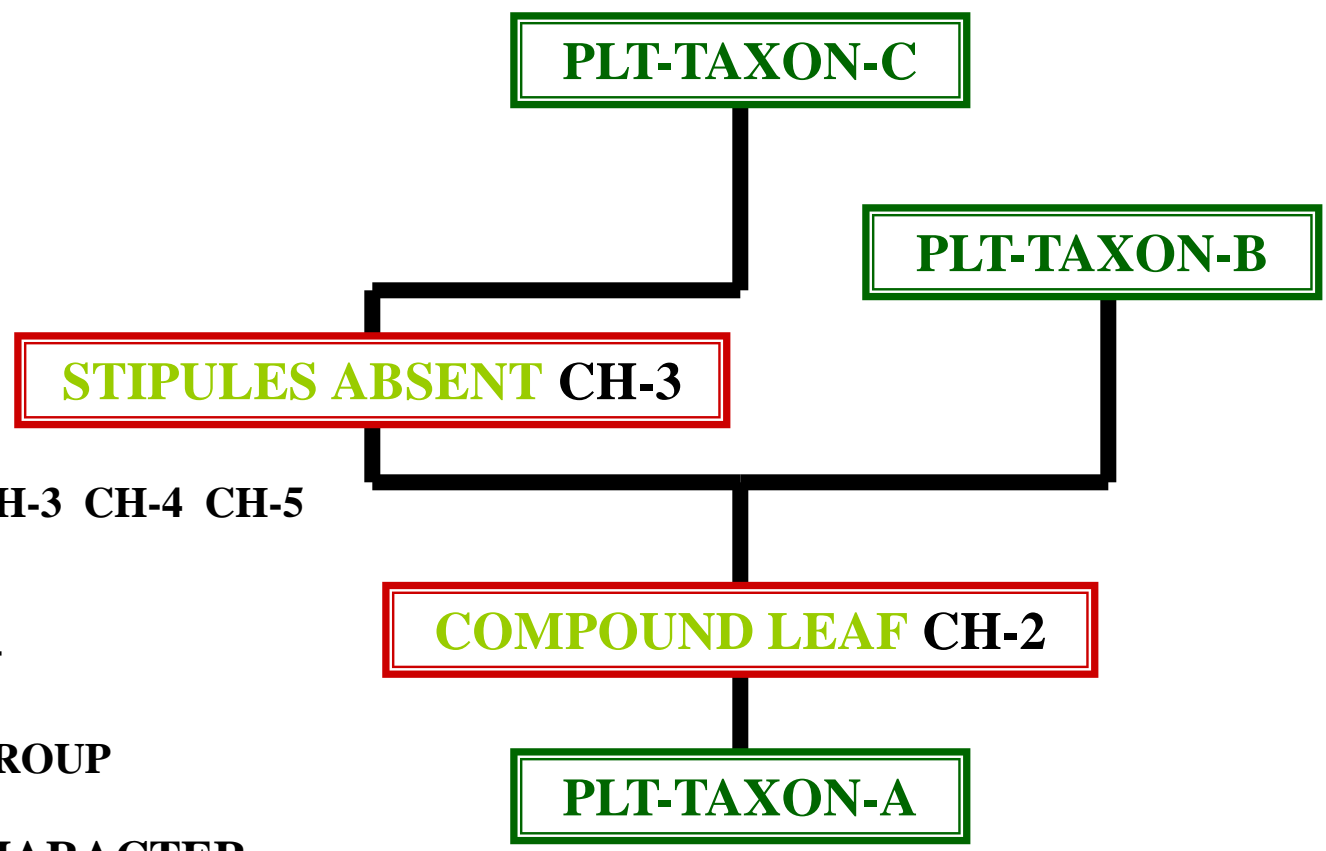
# CLADOGRAM

## DATA MATRIX

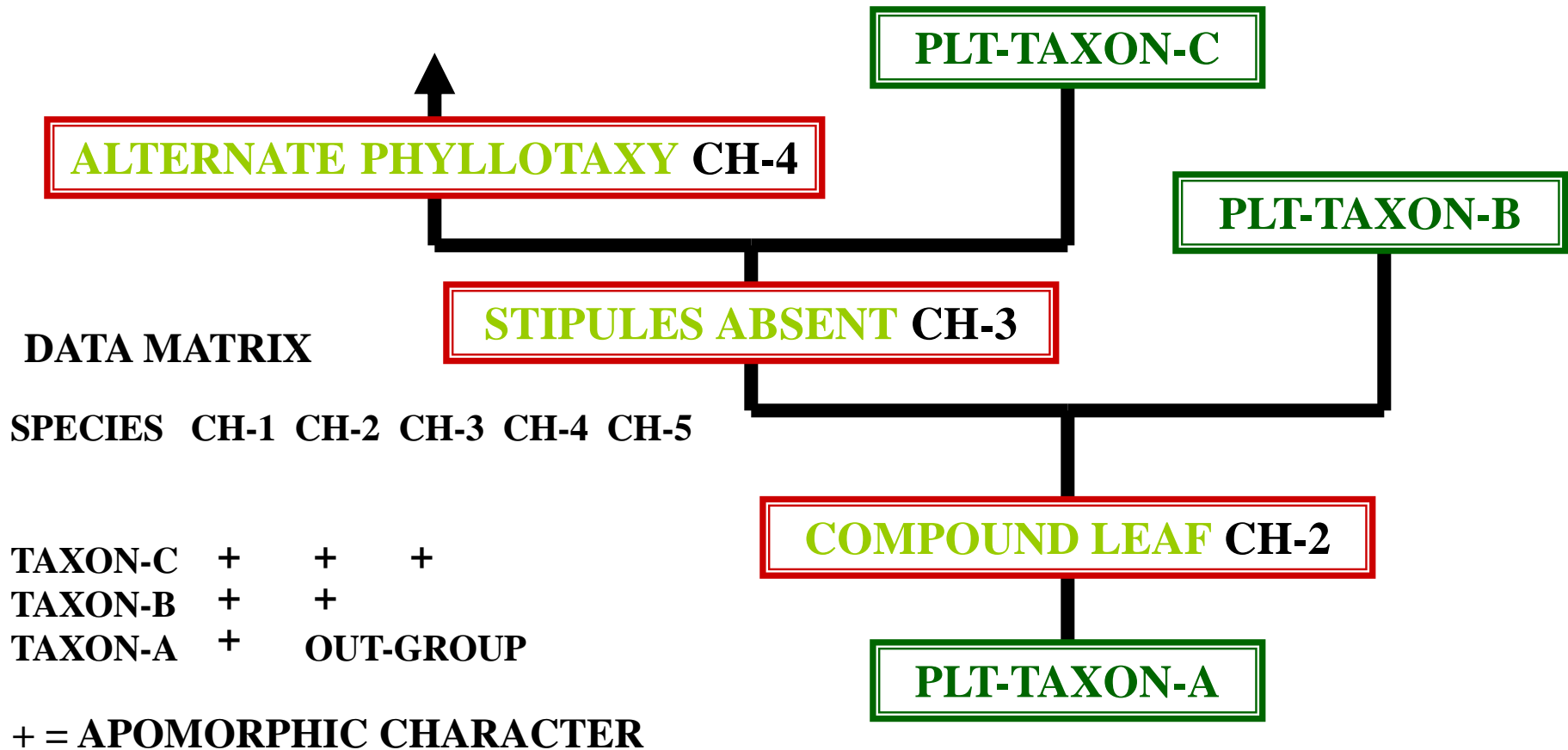
SPECIES CH-1 CH-2 CH-3 CH-4 CH-5

TAXON-C	+	+	+		
TAXON-B	+	+			
TAXON-A	+				OUT-GROUP

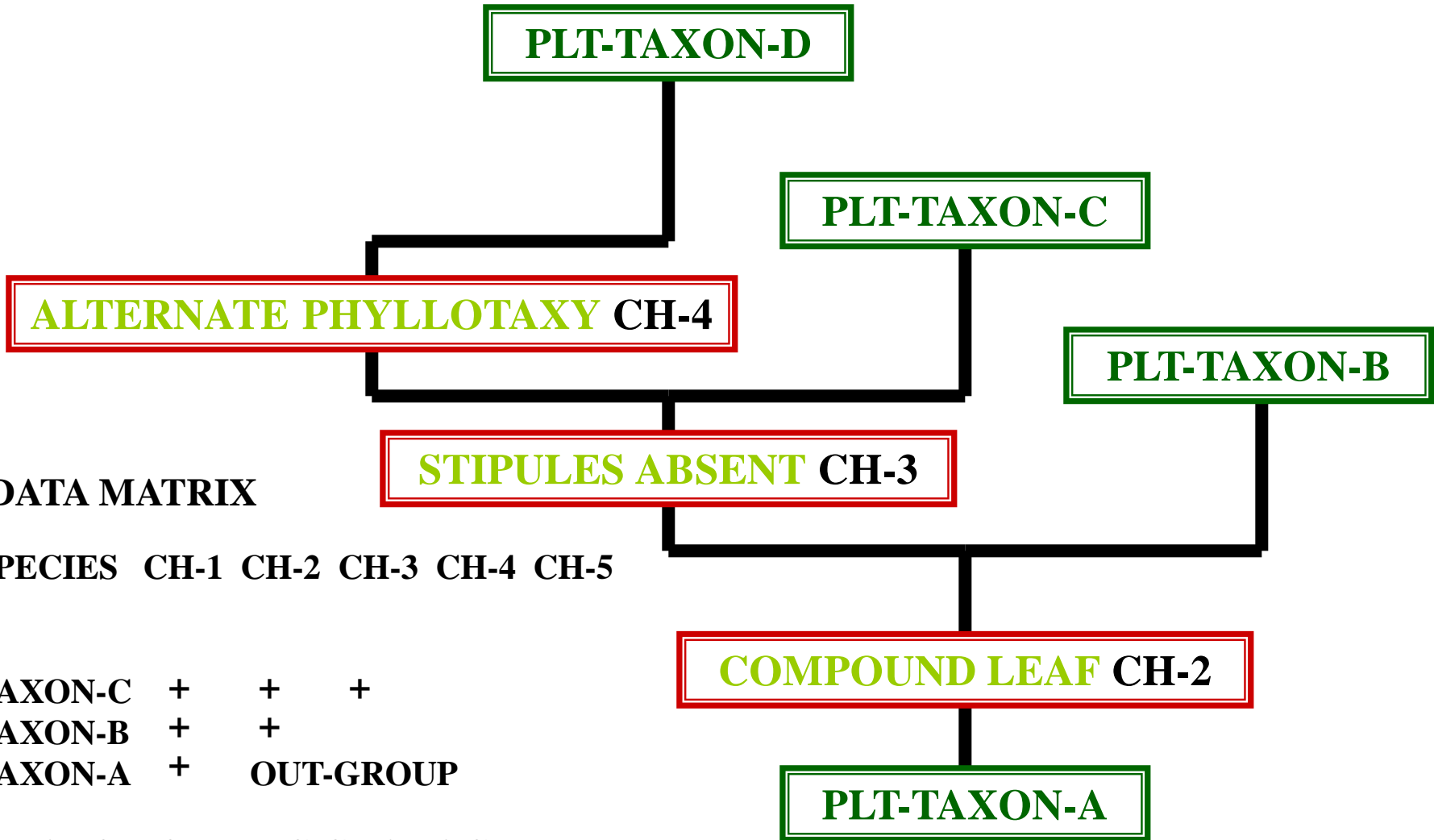
+ = APOMORPHIC CHARACTER



# CLADOGRAM



# CLADOGRAM



## DATA MATRIX

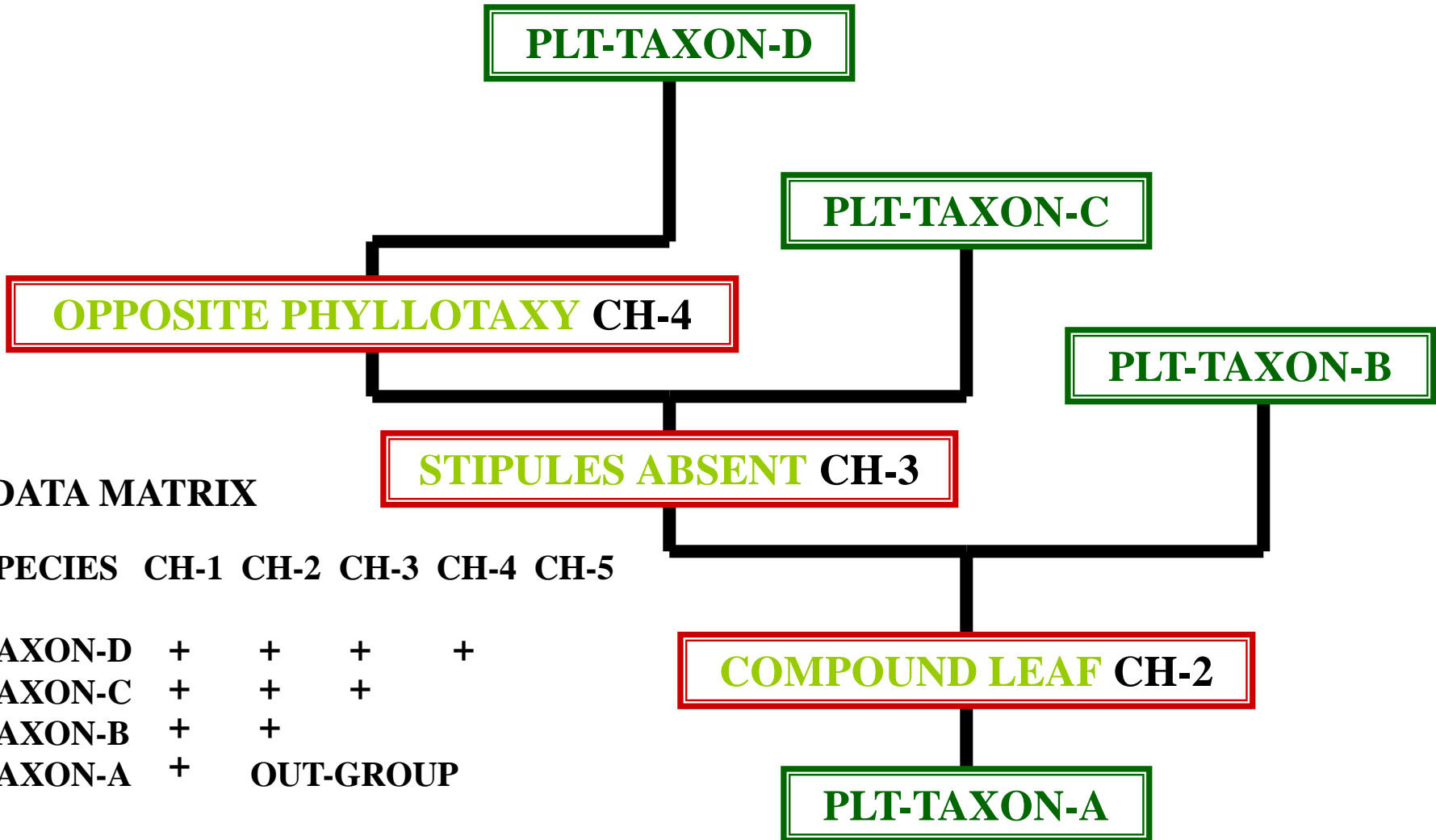
SPECIES CH-1 CH-2 CH-3 CH-4 CH-5

TAXON-C	+	+	+		
TAXON-B	+	+			
TAXON-A	+				OUT-GROUP

+ = APOMORPHIC CHARACTER



# CLADOGRAM



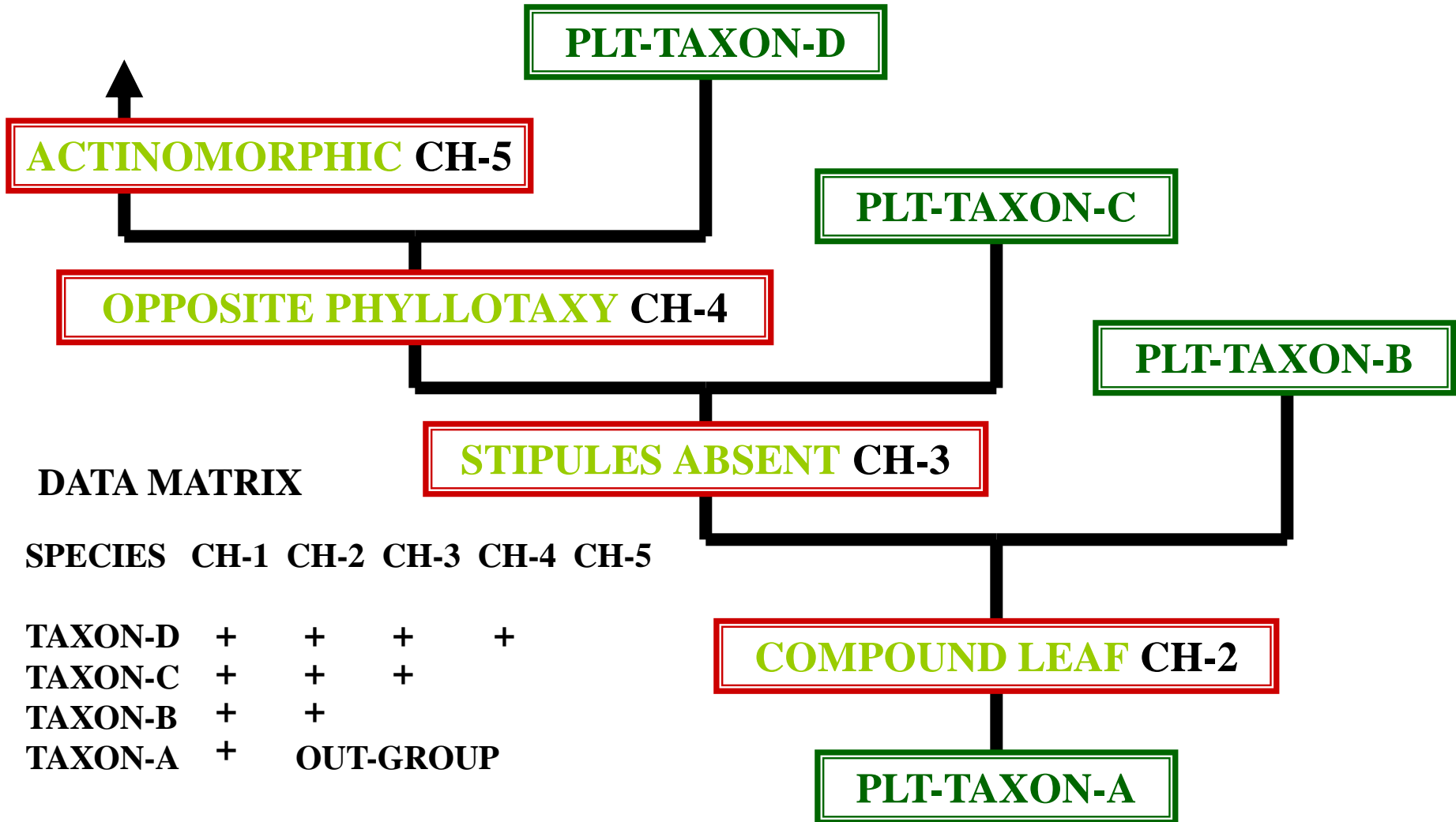
## DATA MATRIX

SPECIES CH-1 CH-2 CH-3 CH-4 CH-5

TAXON-D	+	+	+	+	
TAXON-C	+	+	+		
TAXON-B	+	+			
TAXON-A	+	OUT-GROUP			

+ = APOMORPHIC CHARACTER

# CLADOGRAM



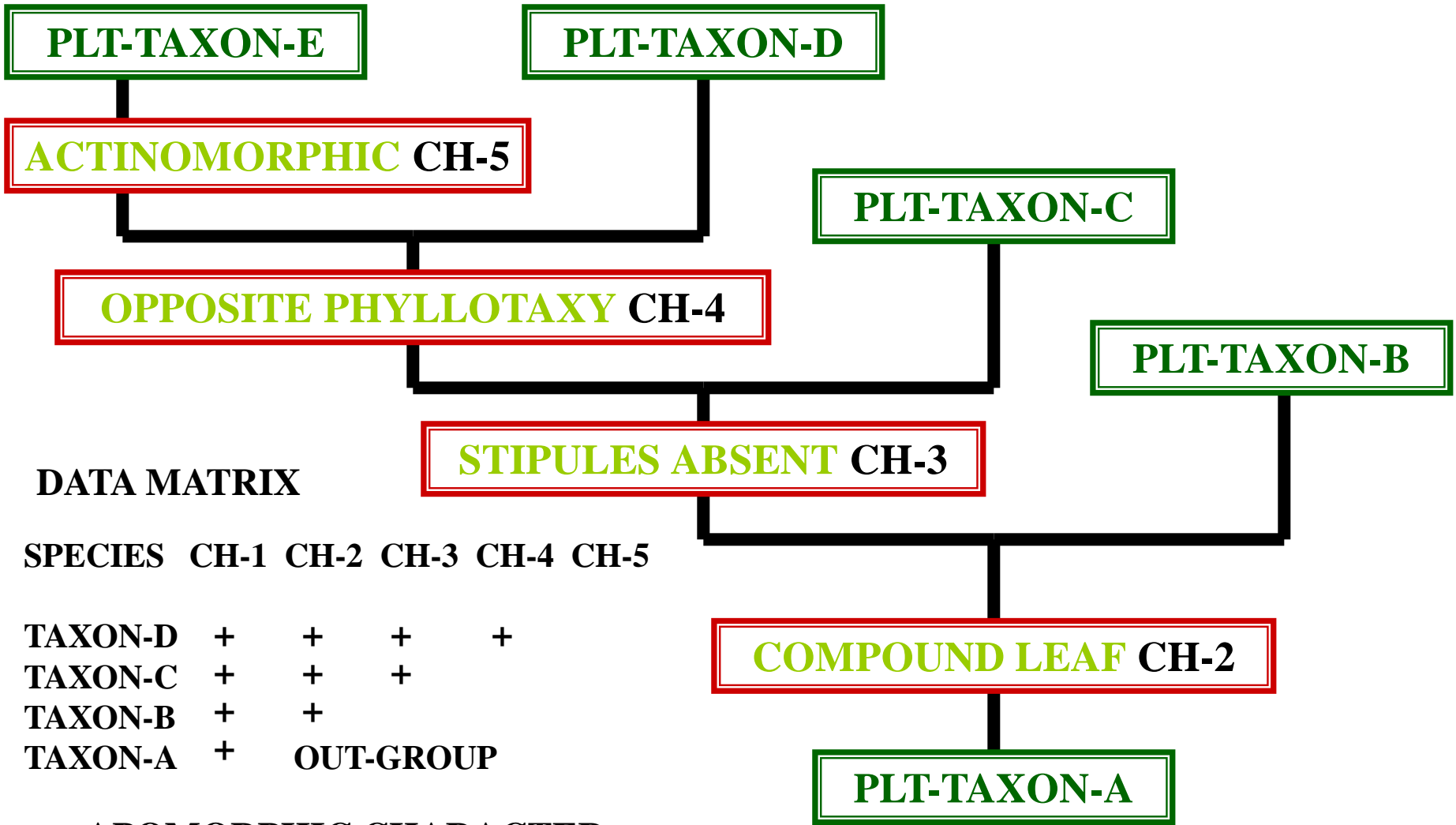
## DATA MATRIX

SPECIES CH-1 CH-2 CH-3 CH-4 CH-5

TAXON-D	+	+	+	+	
TAXON-C	+	+	+		
TAXON-B	+	+			
TAXON-A	+				OUT-GROUP

+ = APOMORPHIC CHARACTER

# CLADOGRAM



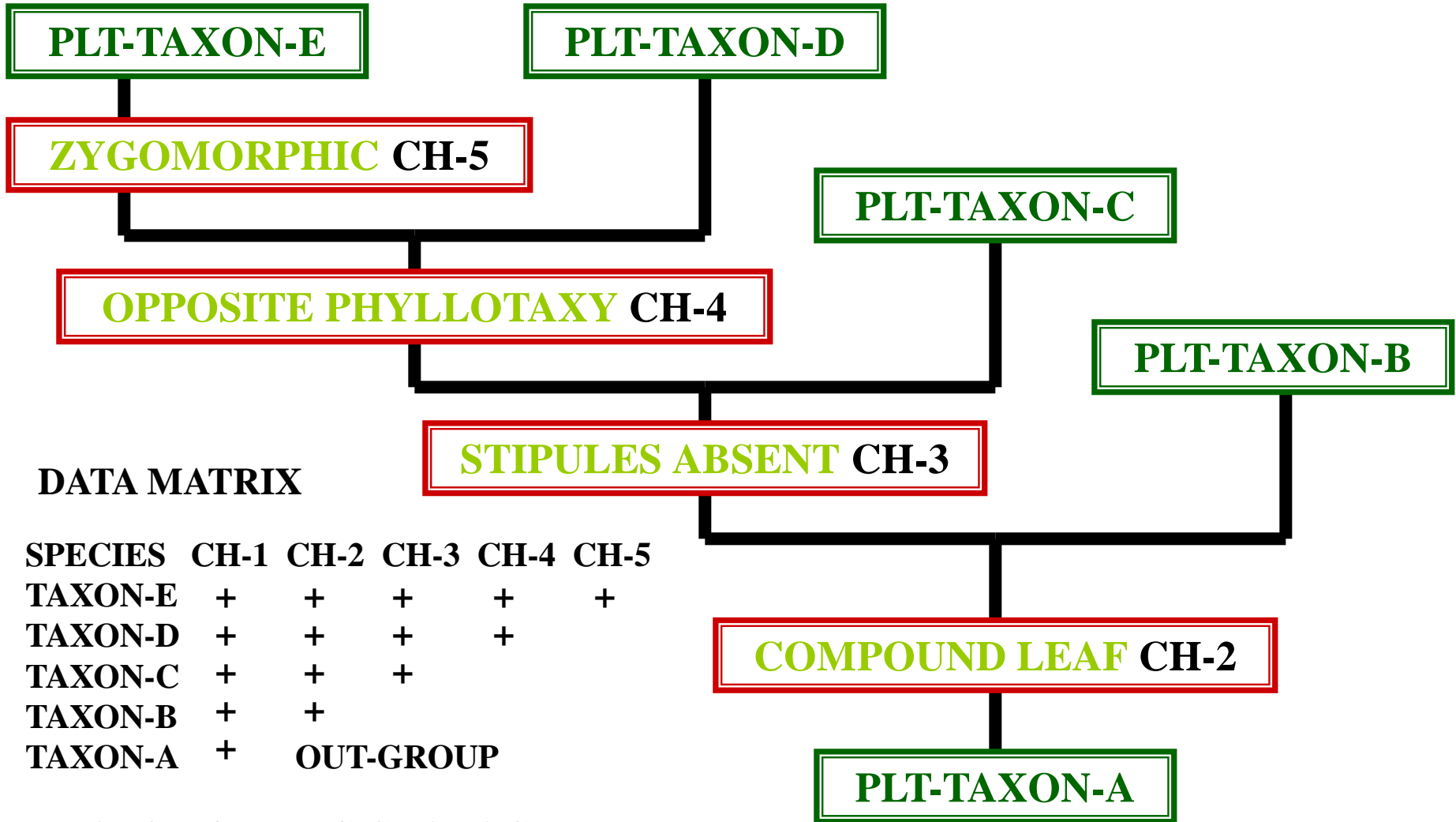
**DATA MATRIX**

SPECIES CH-1 CH-2 CH-3 CH-4 CH-5

TAXON-D	+	+	+	+	
TAXON-C	+	+	+		
TAXON-B	+	+			
TAXON-A	+	OUT-GROUP			

+ = APOMORPHIC CHARACTER

# CLADOGRAM

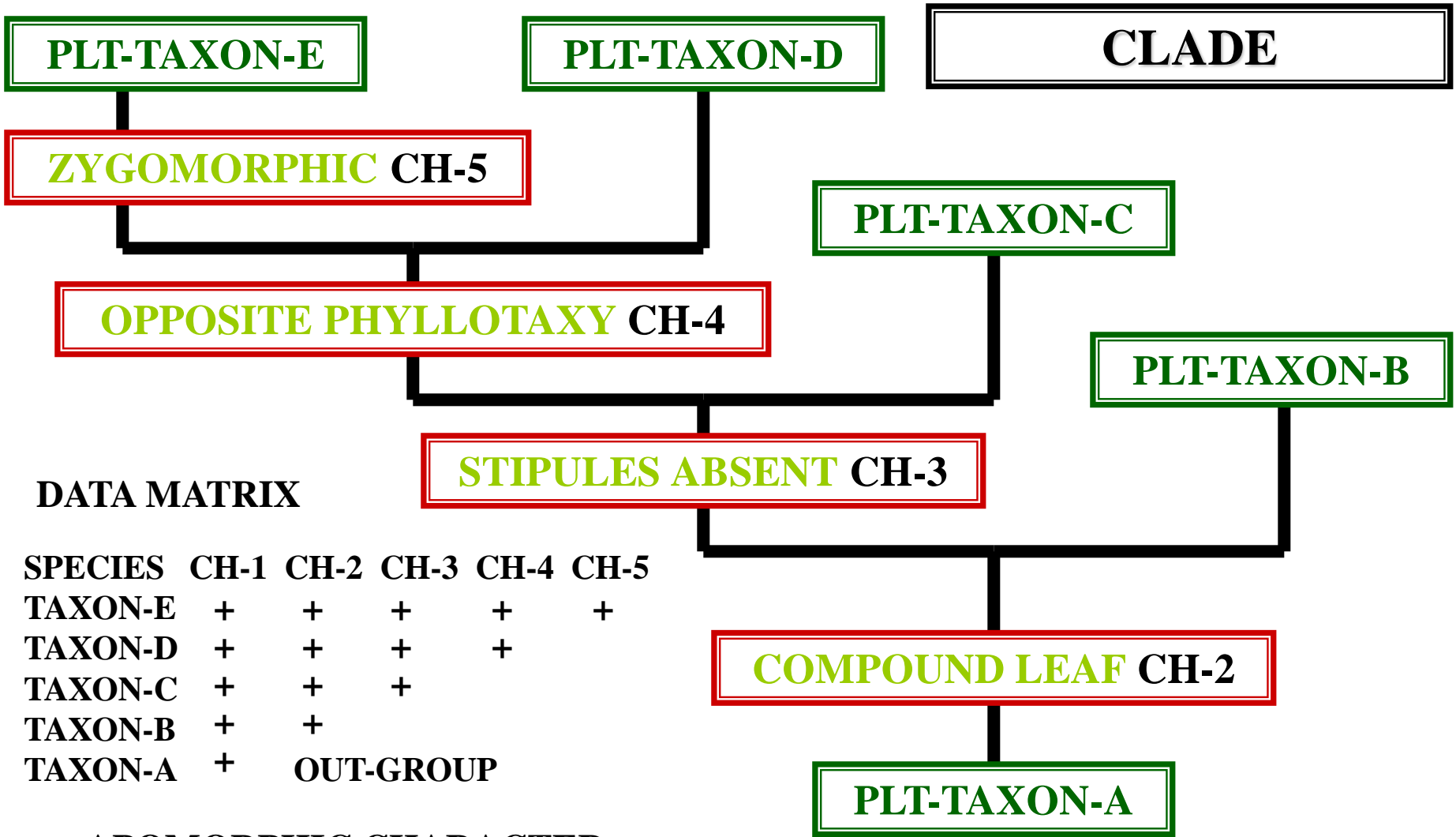


## DATA MATRIX

SPECIES	CH-1	CH-2	CH-3	CH-4	CH-5
TAXON-E	+	+	+	+	+
TAXON-D	+	+	+	+	
TAXON-C	+	+	+		
TAXON-B	+	+			
TAXON-A	+	OUT-GROUP			

+ = APOMORPHIC CHARACTER

# CLADOGRAM



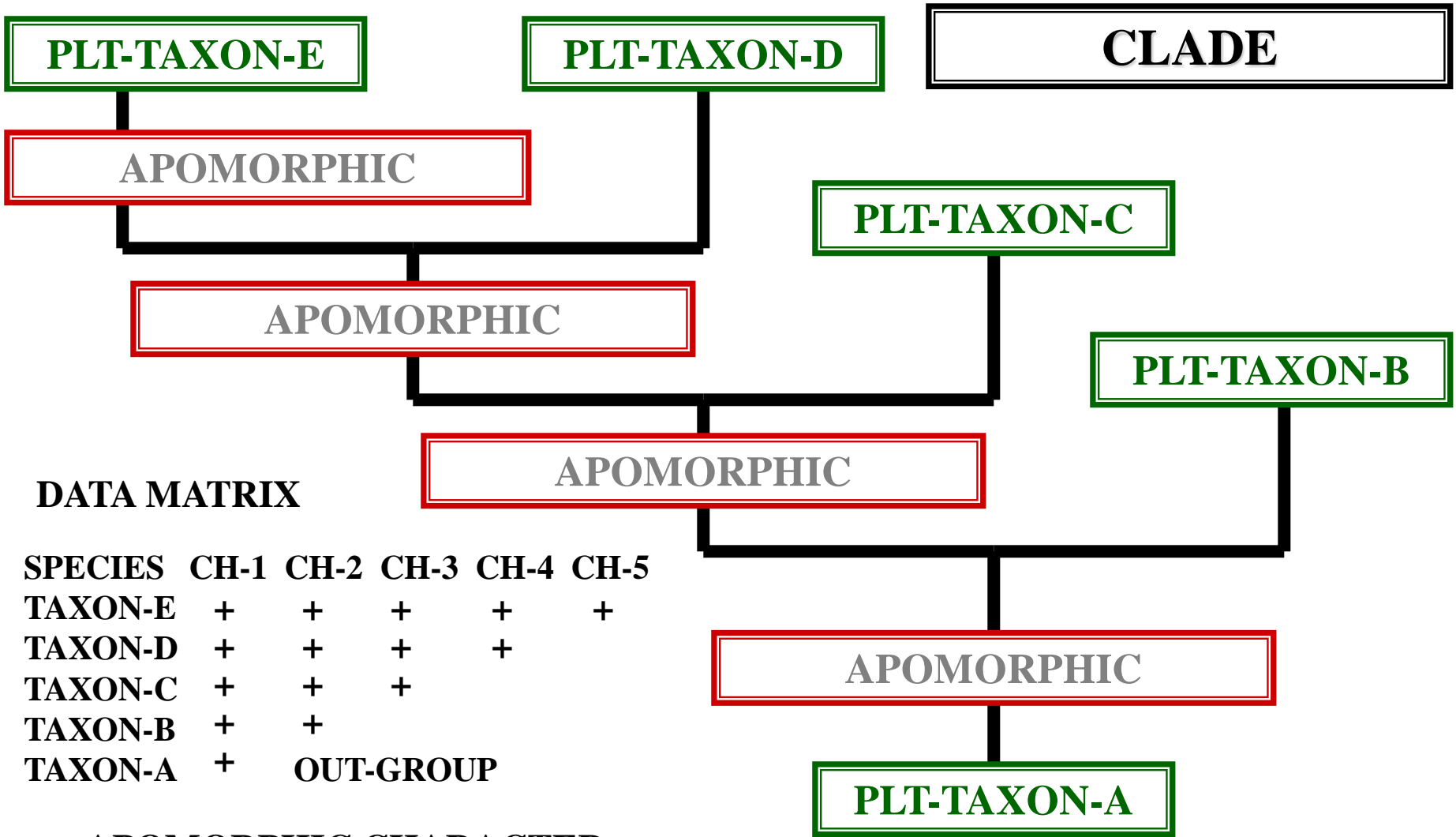
**DATA MATRIX**

SPECIES	CH-1	CH-2	CH-3	CH-4	CH-5
TAXON-E	+	+	+	+	+
TAXON-D	+	+	+	+	
TAXON-C	+	+	+		
TAXON-B	+	+			
TAXON-A	+	OUT-GROUP			

+ = APOMORPHIC CHARACTER



# CLADOGRAM



## DATA MATRIX

SPECIES	CH-1	CH-2	CH-3	CH-4	CH-5
TAXON-E	+	+	+	+	+
TAXON-D	+	+	+	+	
TAXON-C	+	+	+		
TAXON-B	+	+			
TAXON-A	+	OUT-GROUP			

+ = APOMORPHIC CHARACTER



# ANGIOSPERM CHARACTER POLARITY

**CH-1 WOODY**

**CH-2 SIMPLE LEAF → COMPOUND LEAF**

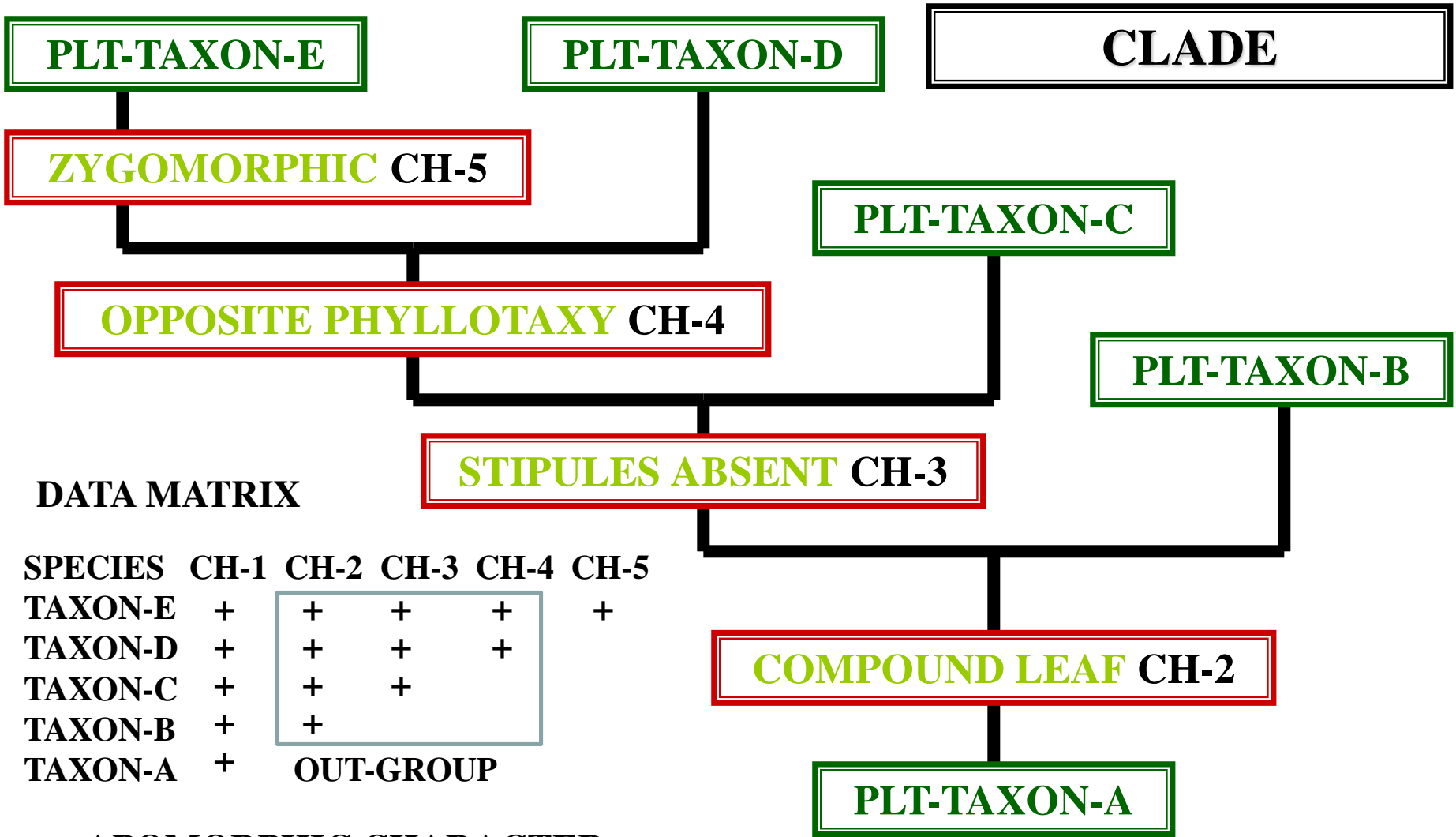
**CH-3 STIPULES PRESENT → STIPULES ABSENT**

**CH-4 ALTERNATE LEAF → OPPOSITE LEAF**

**CH-5 ACTINOMORPHIC FLOWER → ZYGOMORPHIC FLOWER**

**PLESIOMORPHIC → APOMORPHIC**

# CLADOGRAM



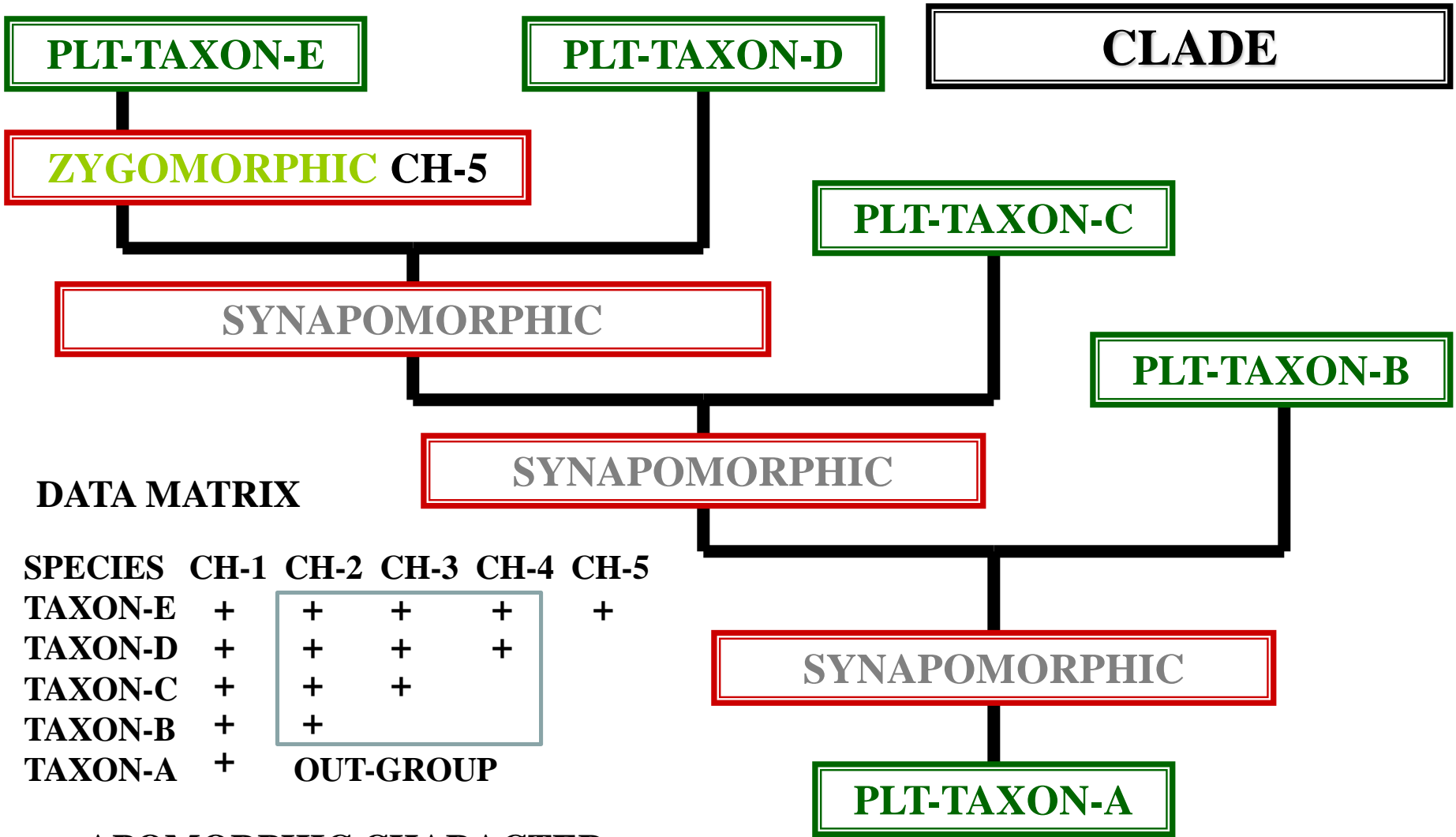
## DATA MATRIX

SPECIES	CH-1	CH-2	CH-3	CH-4	CH-5
TAXON-E	+	+	+	+	+
TAXON-D	+	+	+	+	
TAXON-C	+	+	+		
TAXON-B	+	+			
TAXON-A	+	OUT-GROUP			

+ = APOMORPHIC CHARACTER



# CLADOGRAM

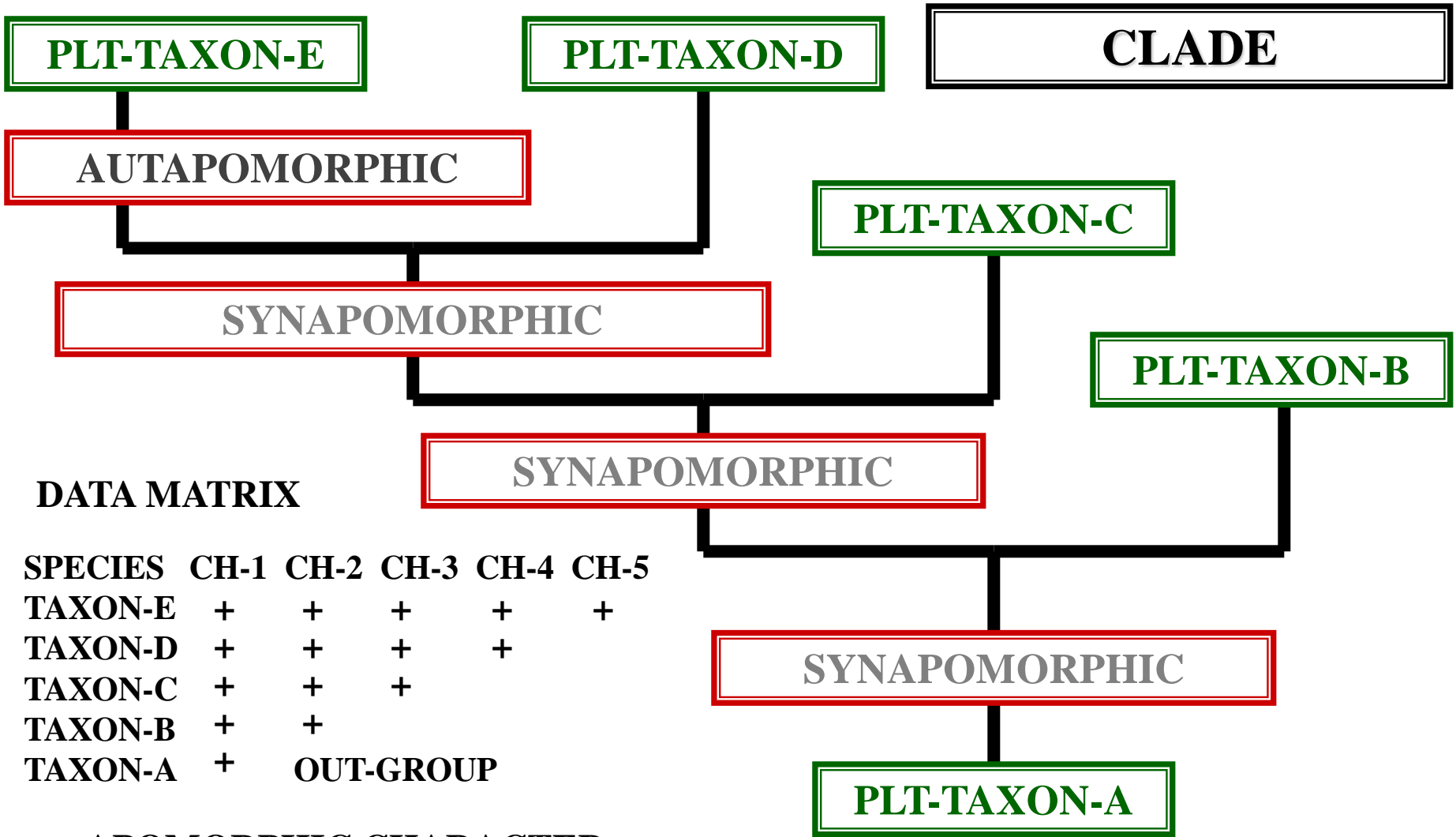


## DATA MATRIX

SPECIES	CH-1	CH-2	CH-3	CH-4	CH-5
TAXON-E	+	+	+	+	+
TAXON-D	+	+	+	+	
TAXON-C	+	+	+		
TAXON-B	+	+			
TAXON-A	+	OUT-GROUP			

+ = APOMORPHIC CHARACTER

# CLADOGRAM



## DATA MATRIX

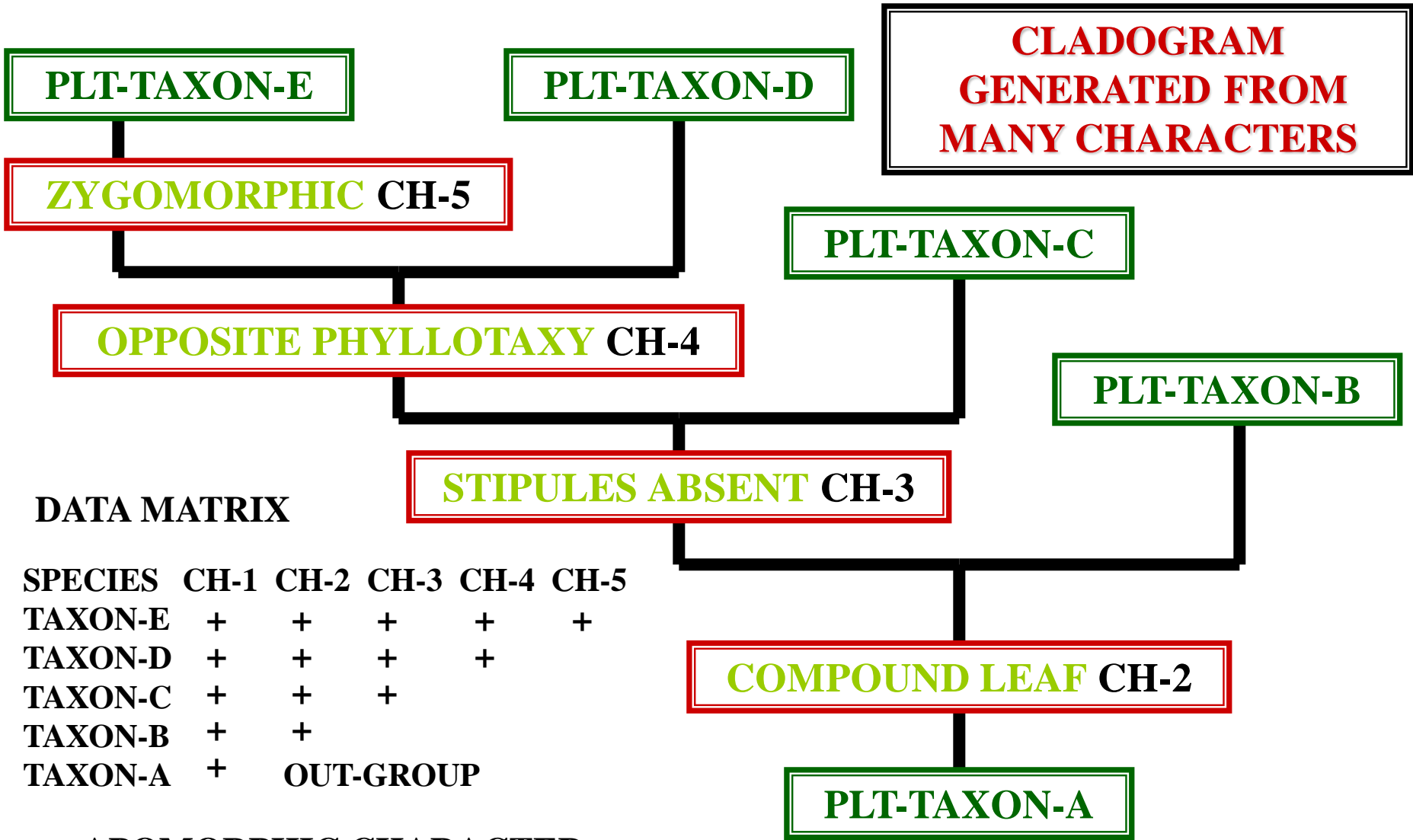
SPECIES	CH-1	CH-2	CH-3	CH-4	CH-5
TAXON-E	+	+	+	+	+
TAXON-D	+	+	+	+	
TAXON-C	+	+	+		
TAXON-B	+	+			
TAXON-A	+	OUT-GROUP			

+ = APOMORPHIC CHARACTER

**CLADISTIC  
PHYLOGENETIC  
CLASSIFICATION  
ADVANTAGES**

# CLADOGRAM

**CLADOGRAM  
GENERATED FROM  
MANY CHARACTERS**



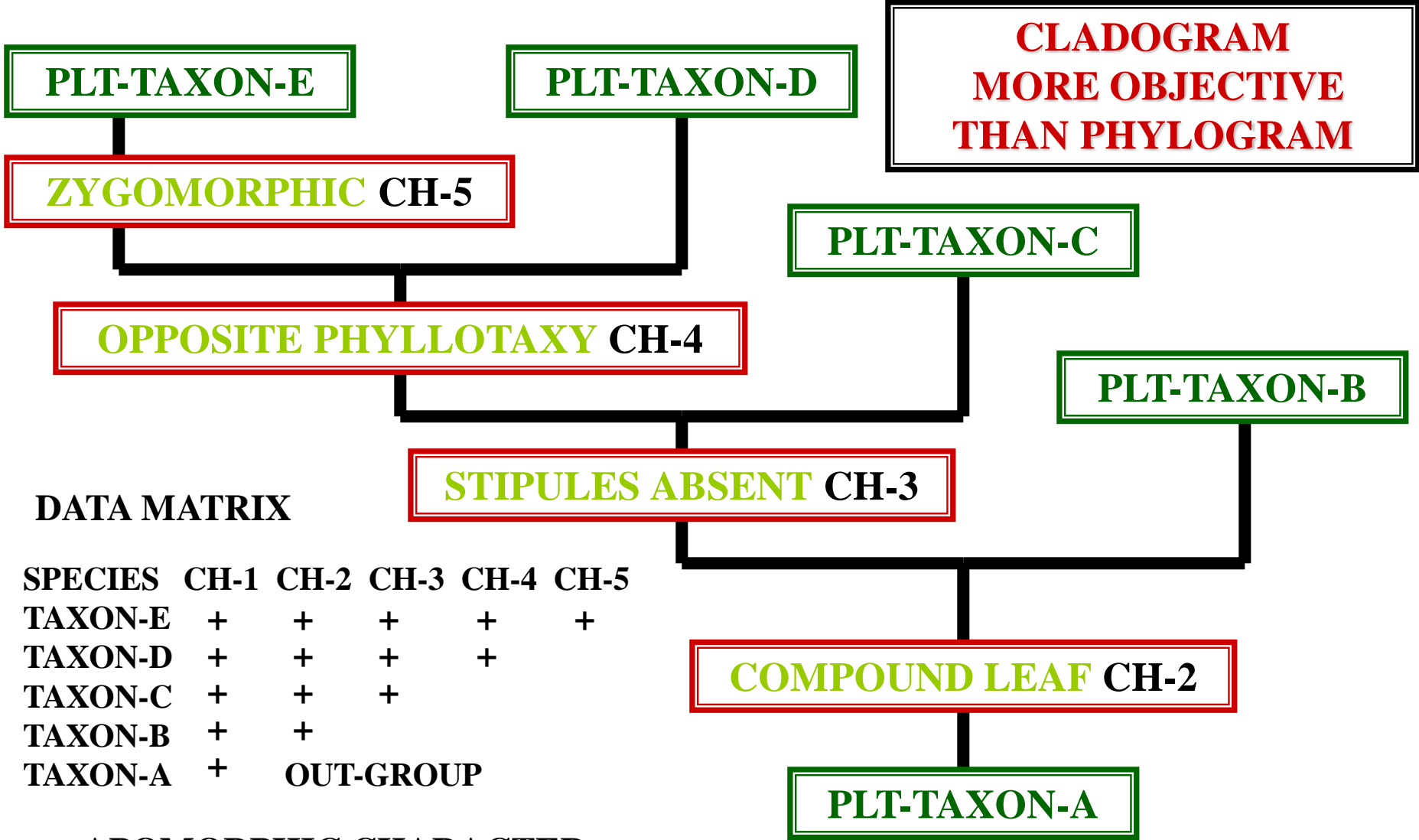
**DATA MATRIX**

SPECIES	CH-1	CH-2	CH-3	CH-4	CH-5
TAXON-E	+	+	+	+	+
TAXON-D	+	+	+	+	
TAXON-C	+	+	+		
TAXON-B	+	+			
TAXON-A	+	OUT-GROUP			

**+ = APOMORPHIC CHARACTER**

# CLADOGRAM

**CLADOGRAM  
MORE OBJECTIVE  
THAN PHYLOGRAM**

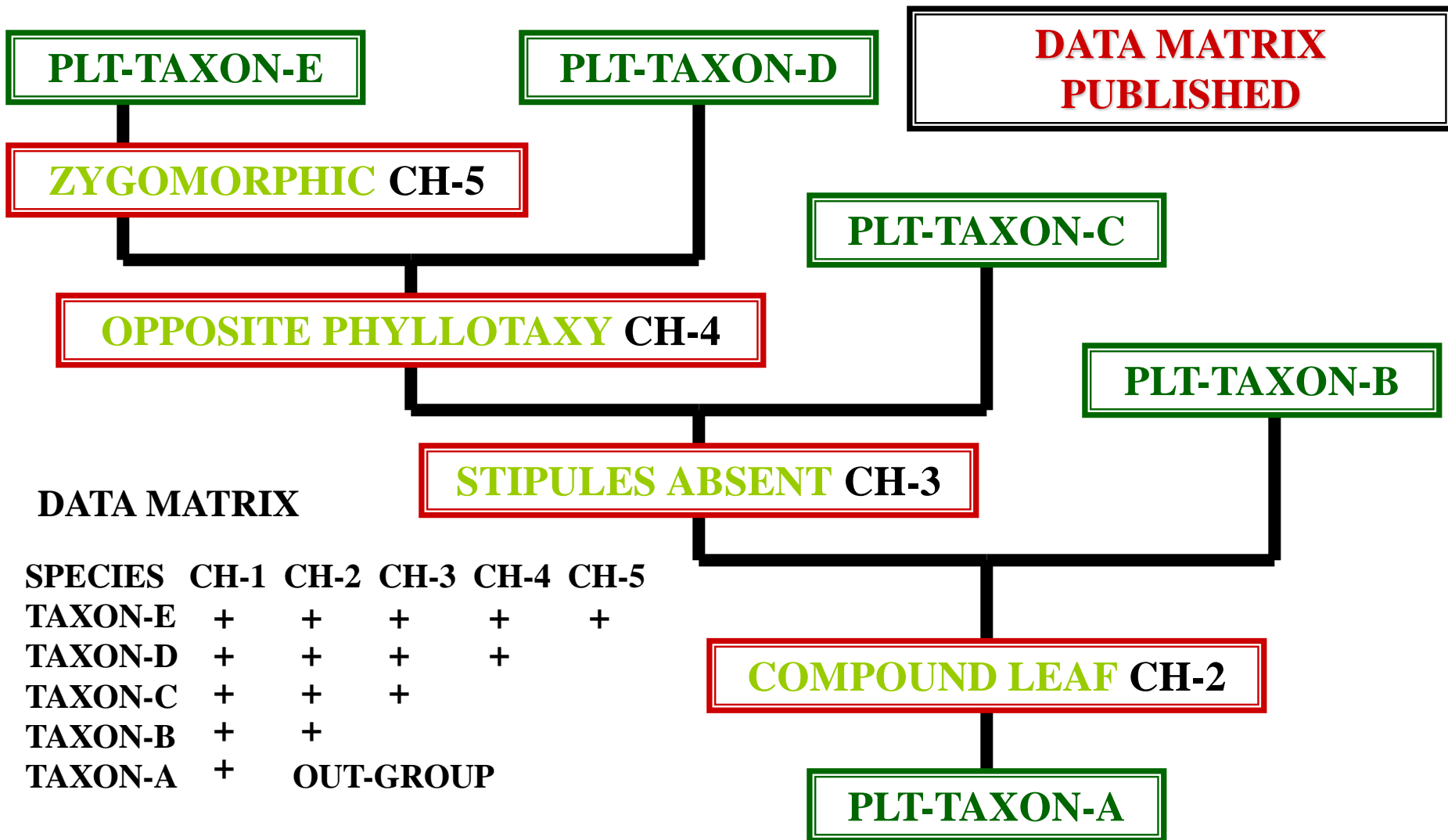


**DATA MATRIX**

SPECIES	CH-1	CH-2	CH-3	CH-4	CH-5
TAXON-E	+	+	+	+	+
TAXON-D	+	+	+	+	
TAXON-C	+	+	+		
TAXON-B	+	+			
TAXON-A	+	OUT-GROUP			

**+ = APOMORPHIC CHARACTER**

# CLADOGRAM



+ = APOMORPHIC CHARACTER

# DATA MATRIX

P

+

<b>PLT-TAXON</b>	<b>CH-1</b>	<b>CH-2</b>	<b>CH-3</b>	<b>CH-4</b>	<b>CH-5</b>
<b>PLT-TAXON-E</b>	+	+	+	+	+
<b>PLT-TAXON-D</b>	+	+	+	+	-
<b>PLT-TAXON-C</b>	+	+	+	-	-
<b>PLT-TAXON-B</b>	+	+	-	-	-
<b>PLT-TAXON-A</b>	+	-	-	-	-

**+ = CHARACTER PRESENT**

# DATA MATRIX

C

+

PLT-TAXON	CH-1	CH-2	CH-3	CH-4	CH-5
-----------	------	------	------	------	------

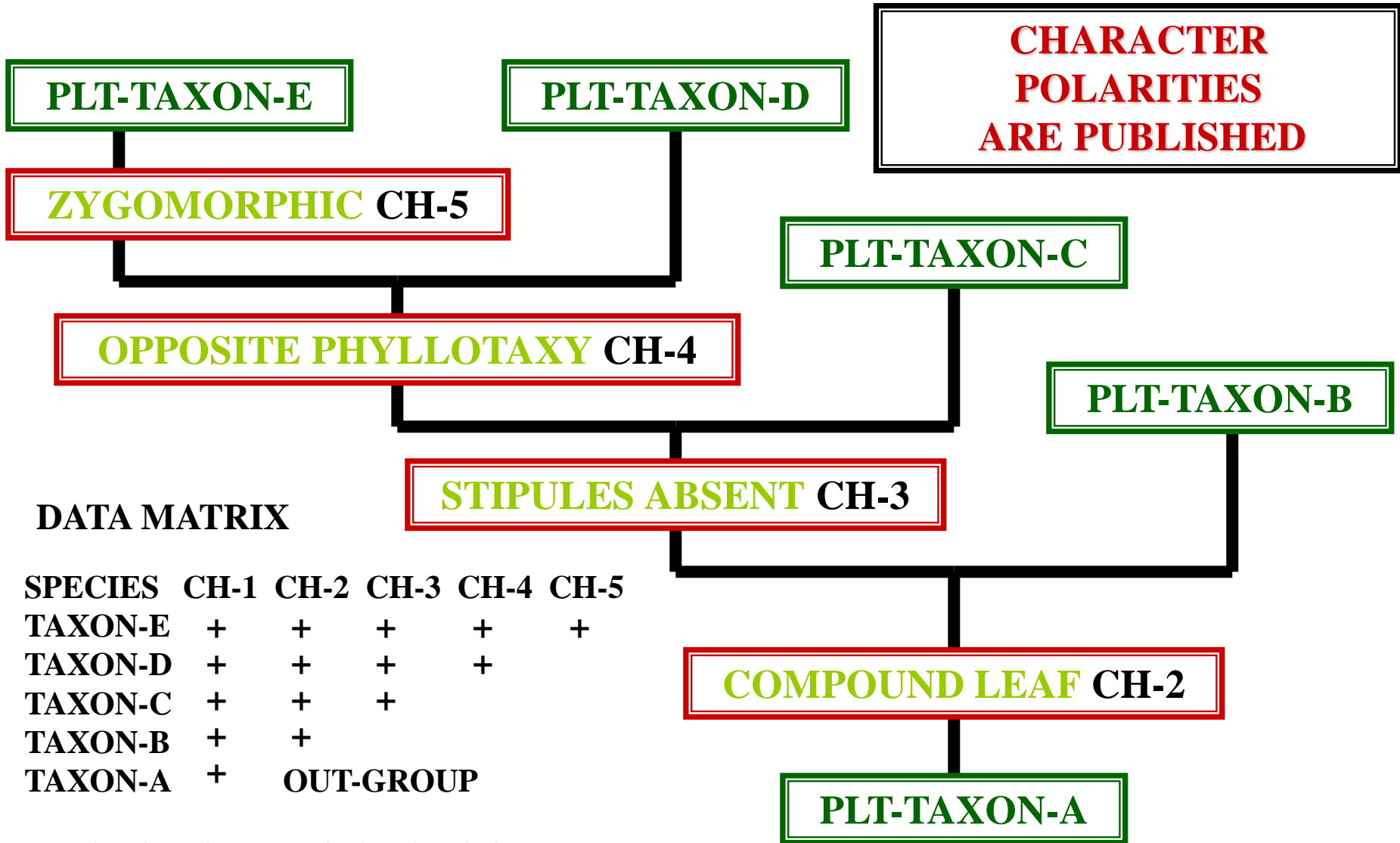
**DATA MATRIX  
IS PUBLISHED  
WITH CLADOGRAM**

PLT-TAXON-A	+	-	-	-	-
-------------	---	---	---	---	---

**+ = CHARACTER PRESENT**



# CLADOGRAM



## DATA MATRIX

SPECIES	CH-1	CH-2	CH-3	CH-4	CH-5
TAXON-E	+	+	+	+	+
TAXON-D	+	+	+	+	
TAXON-C	+	+	+		
TAXON-B	+	+			
TAXON-A	+	OUT-GROUP			

+ = APOMORPHIC CHARACTER

# ANGIOSPERM CHARACTER POLARITIES

- WOODY** → **HERBACEOUS**
- SIMPLE LEAF** → **COMPOUND LEAF**
- STIPULES PRESENT** → **STIPULES ABSENT**
- ALTERNATE** → **OPPOSITE**
- PHYLLOTAXY** → **PHYLLOTAXY**
- ACTINOMORPHIC** → **ZYGOMORPHIC**
- PRIMITIVE PLT** → **ADVANCED PLT**

**DATA MATRIX**

**CHARACTER**

**CHARACTER**

**POLARITIES**

**ARE PUBLISHED**

**WITH CLADOGRAM**

**ACTINOMORPHIC**



**ZYGOMORPHIC**

**PRIMITIVE PLT**

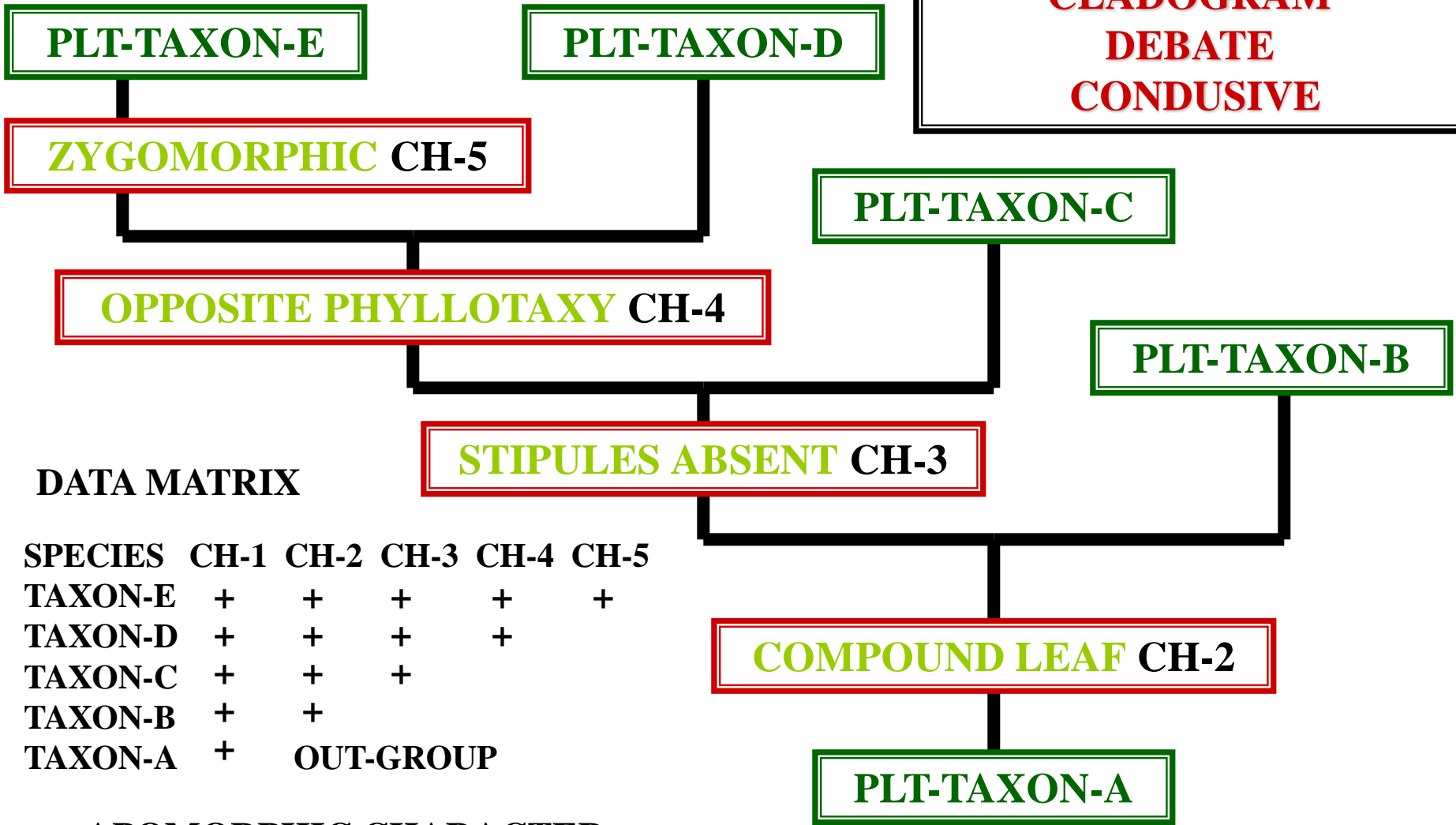


**ADVANCED PLT**

# CLADOGRAM



**CLADOGRAM  
DEBATE  
CONDUSIVE**



## DATA MATRIX

SPECIES	CH-1	CH-2	CH-3	CH-4	CH-5
TAXON-E	+	+	+	+	+
TAXON-D	+	+	+	+	
TAXON-C	+	+	+		
TAXON-B	+	+			
TAXON-A	+	OUT-GROUP			

+ = APOMORPHIC CHARACTER



**CLADISTIC  
CLASSIFICATION  
DEBATE  
CONDUSIVE**

# DATA MATRIX



<b>PLT-TAXON</b>	<b>CH-1</b>	<b>CH-2</b>	<b>CH-3</b>	<b>CH-4</b>	<b>CH-5</b>
------------------	-------------	-------------	-------------	-------------	-------------

**DATA MATRIX  
IS PUBLISHED  
WITH CLADOGRAM**

<b>PLT-TAXON-A</b>	<b>+</b>	<b>-</b>	<b>-</b>	<b>-</b>	<b>-</b>
--------------------	----------	----------	----------	----------	----------

**+ = CHARACTER PRESENT**



**DATA MATRIX**

**CHARACTER**

**CHARACTER**

**POLARITIES**

**ARE PUBLISHED**

**WITH CLADOGRAM**

**ACTINOMORPHIC**



**ZYGOMORPHIC**

**PRIMITIVE PLT**



**ADVANCED PLT**

# QUESTION



**BOTANISTS PREFER  
CLASSICAL PHYLOGENETIC  
METHOD  
OR  
CLADISTIC PHYLOGENETIC  
METHOD?**

# QUESTION





**BOTANISTS  
PREFER  
CLADISTIC  
CLASSIFICATION**



**POLYPHYLETIC**  
**VS**  
**MONOPHYLETIC**  
**VS**  
**PARAPHYLETIC**

# POLYPHYLETIC TAXON

# **POLYPHYLETIC TAXON**



# **POLYPHYLETIC TAXON**

**TAXON WITH RELATED & UNRELATED TAXA**

# **POLYPHYLETIC TAXON**



# **POLYPHYLETIC TAXON**

**TAXON WITH RELATED & UNRELATED TAXA**

---

**OCCURS WHEN ANALOGOUS CHARACTERS  
ARE UTILIZED → CONVERGENCE**

# **POLYPHYLETIC TAXON**

# POLYPHYLETIC TAXON

TAXON WITH RELATED & UNRELATED TAXA

---

OCCURS WHEN ANALOGOUS CHARACTERS  
ARE UTILIZED → CONVERGENCE

---

REJECTED PHYLOGENETIC CLASSIFICATIONS

# POLYPHYLETIC TAXON

# MONOPHYLETIC TAXON



# **MONOPHYLETIC TAXON**



# **MONOPHYLETIC TAXON**

**TAXON WITH RELATED TAXA ONLY**

# **MONOPHYLETIC TAXON**



# MONOPHYLETIC TAXON

TAXON WITH RELATED TAXA ONLY

---

OCCURS WHEN HOMOLOGOUS CHARACTERS  
ARE UTILIZED → CONVERGENCE ABSENT

# MONOPHYLETIC TAXON

# MONOPHYLETIC TAXON

TAXON WITH RELATED TAXA ONLY

---

OCCURS WHEN HOMOLOGOUS CHARACTERS  
ARE UTILIZED → CONVERGENCE ABSENT

---

ACCEPTED WITH ALL CLASSIFICATIONS

# MONOPHYLETIC TAXON

# PARAPHYLETIC TAXON

# **PARAPHYLETIC TAXON**



# PARAPHYLETIC TAXON

MONOPHYLETIC TAXON WITH MISSING RELATED TAXA

---

# PARAPHYLETIC TAXON

# PARAPHYLETIC TAXON

MONOPHYLETIC TAXON WITH MISSING RELATED TAXA

---

REJECTED W/ PHYLOGENETIC CLASSIFICATIONS

# PARAPHYLETIC TAXON



**POLYPHYLETIC**

**VS**

**MONOPHYLETIC**

**VS**

**PARAPHYLETIC**

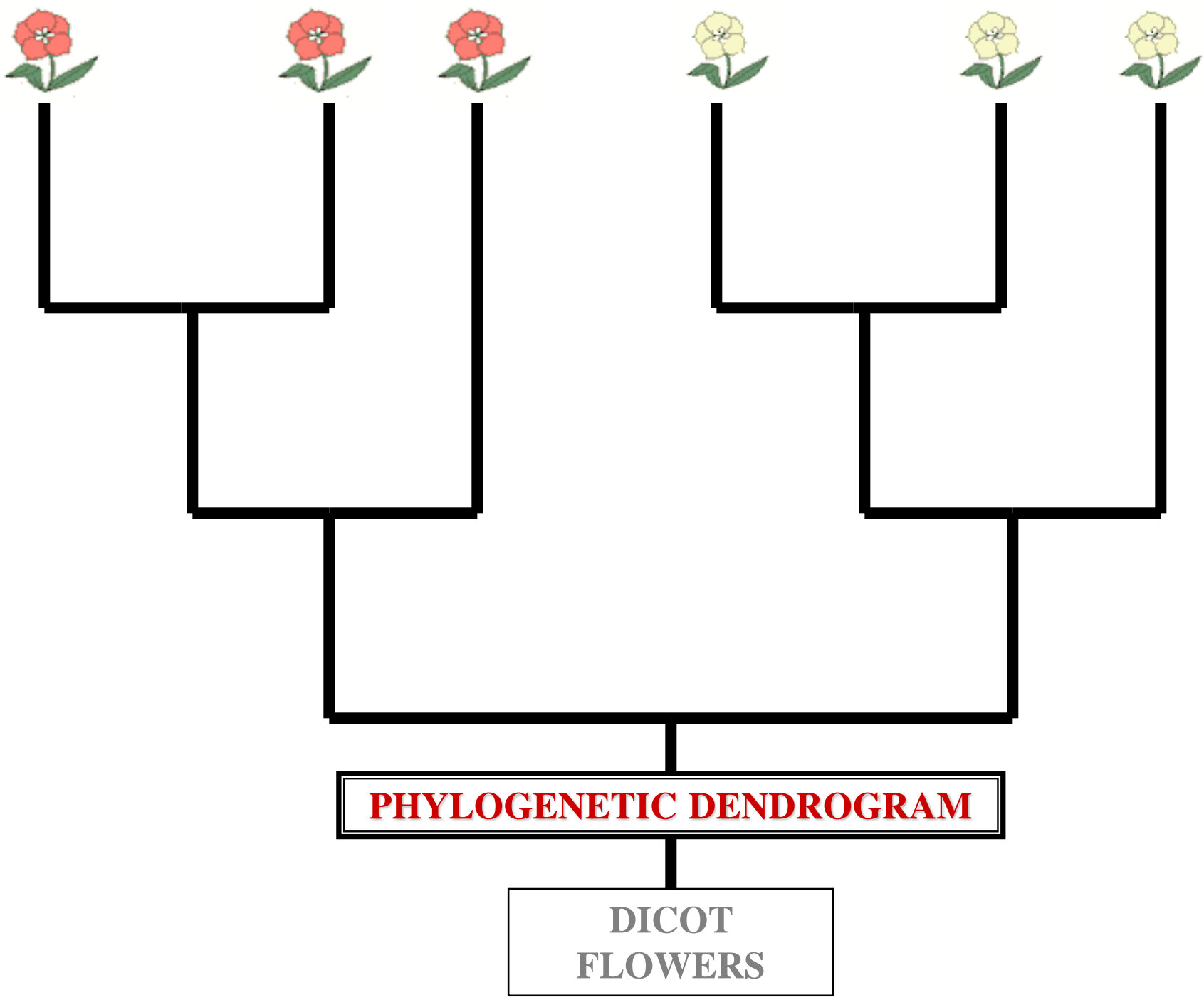
**APPLIED**

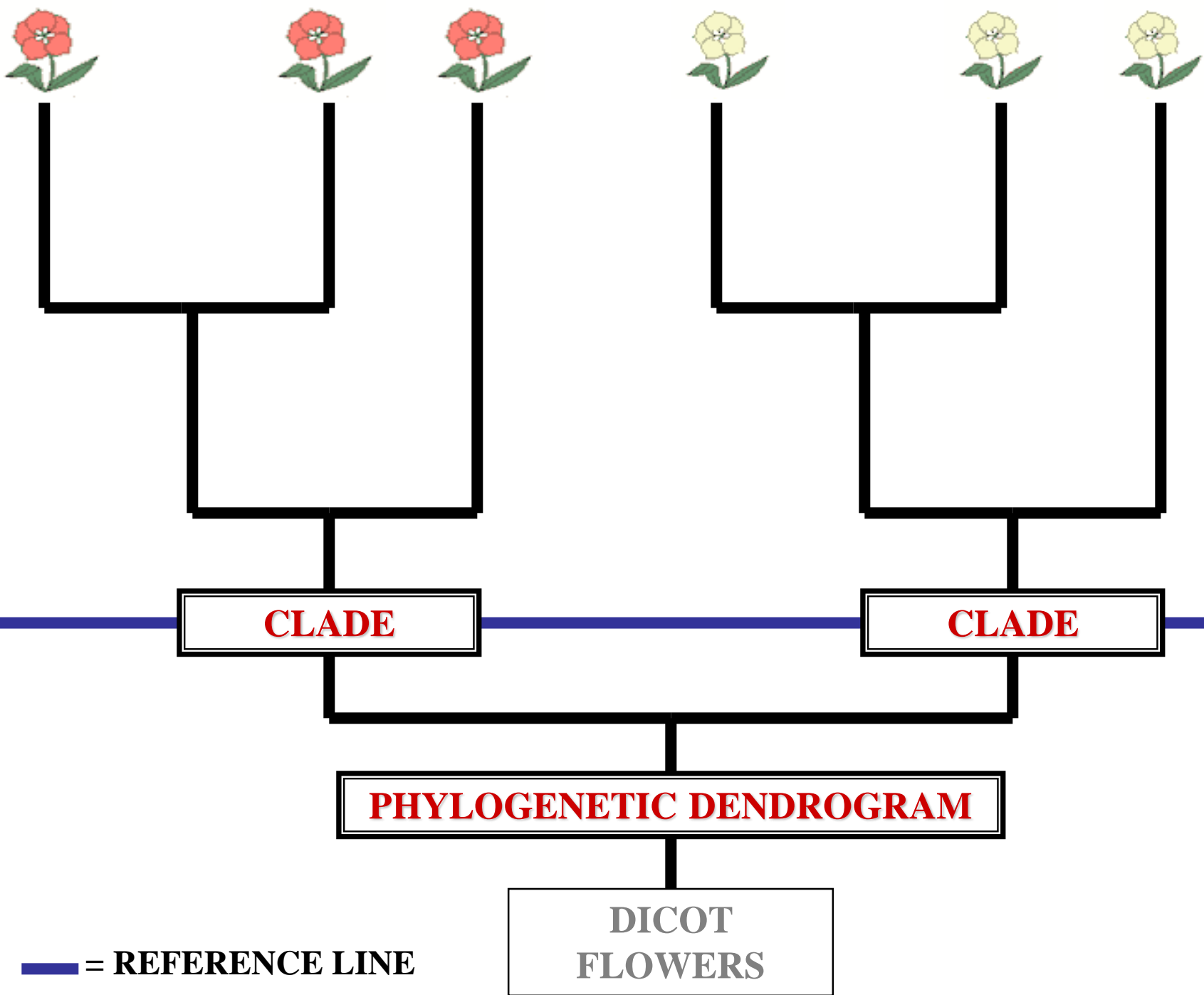
**FLOWER COLOR  
EQUALS  
PHYLOGENETIC  
RELATIONSHIP**



**FLOWER COLOR = HOMOLOGOUS**

**DICOT  
FLOWERS**





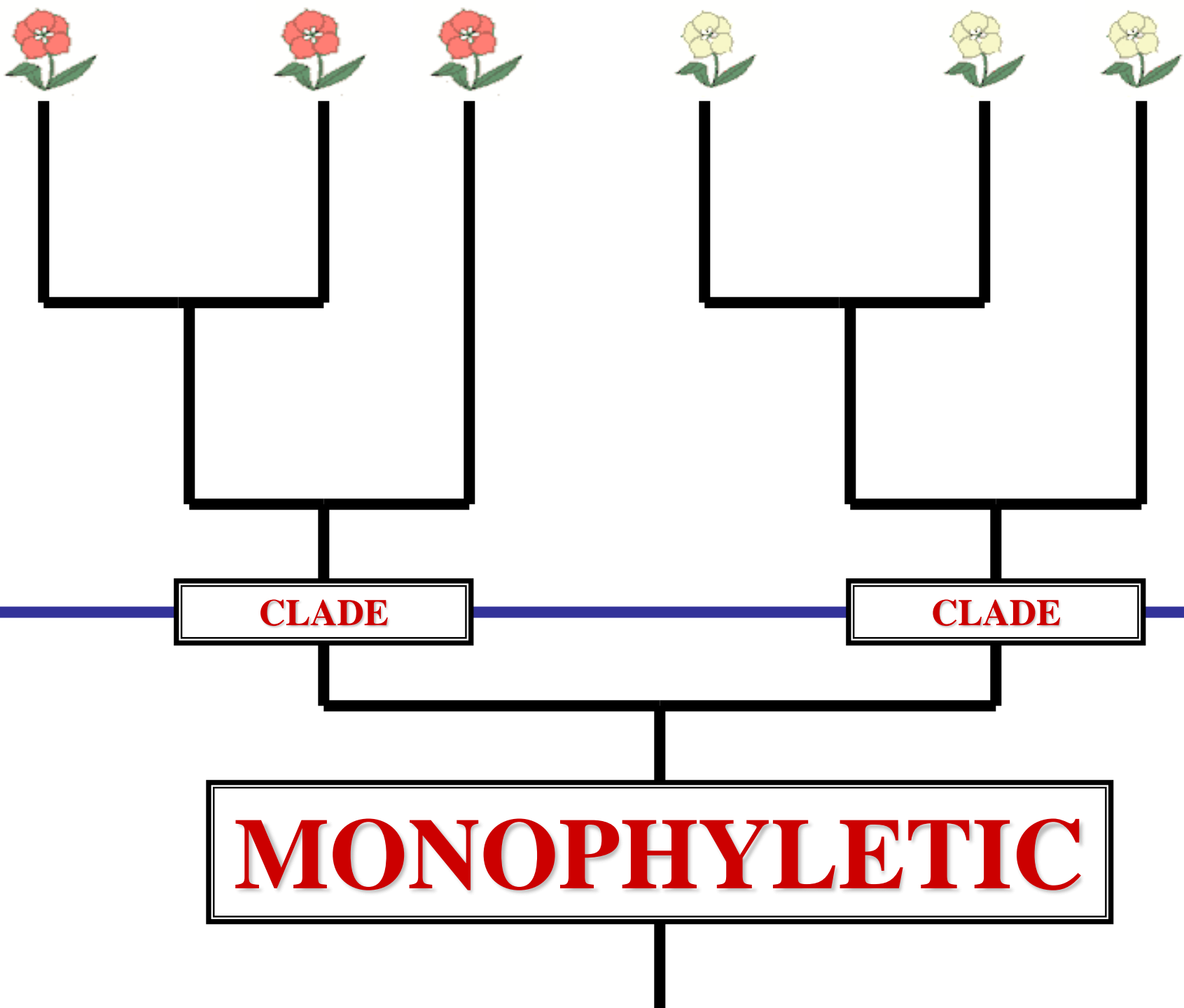
— = REFERENCE LINE

**PHYLOGENETIC DENDROGRAM**

DICOT  
FLOWERS

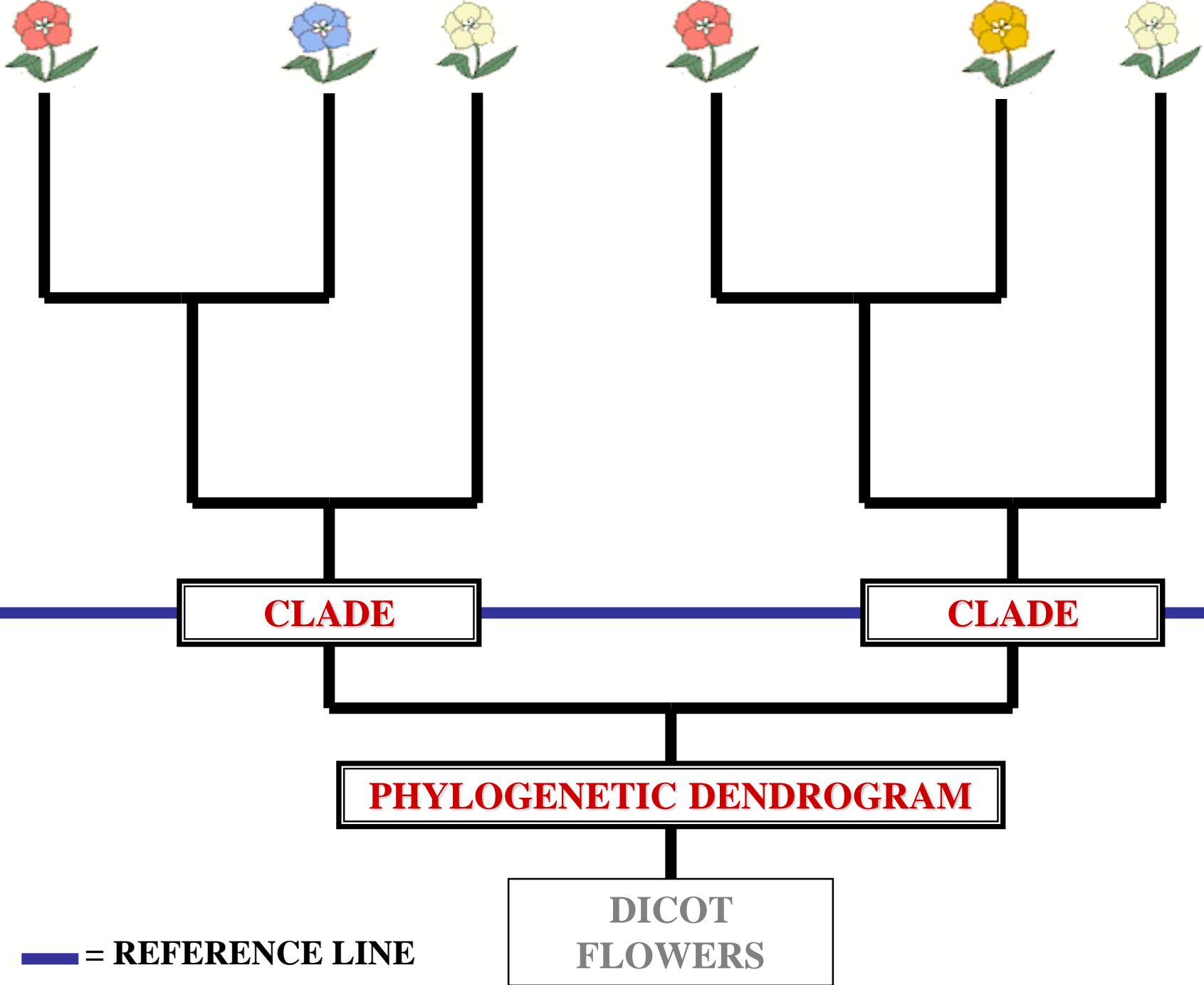
**CLADE**

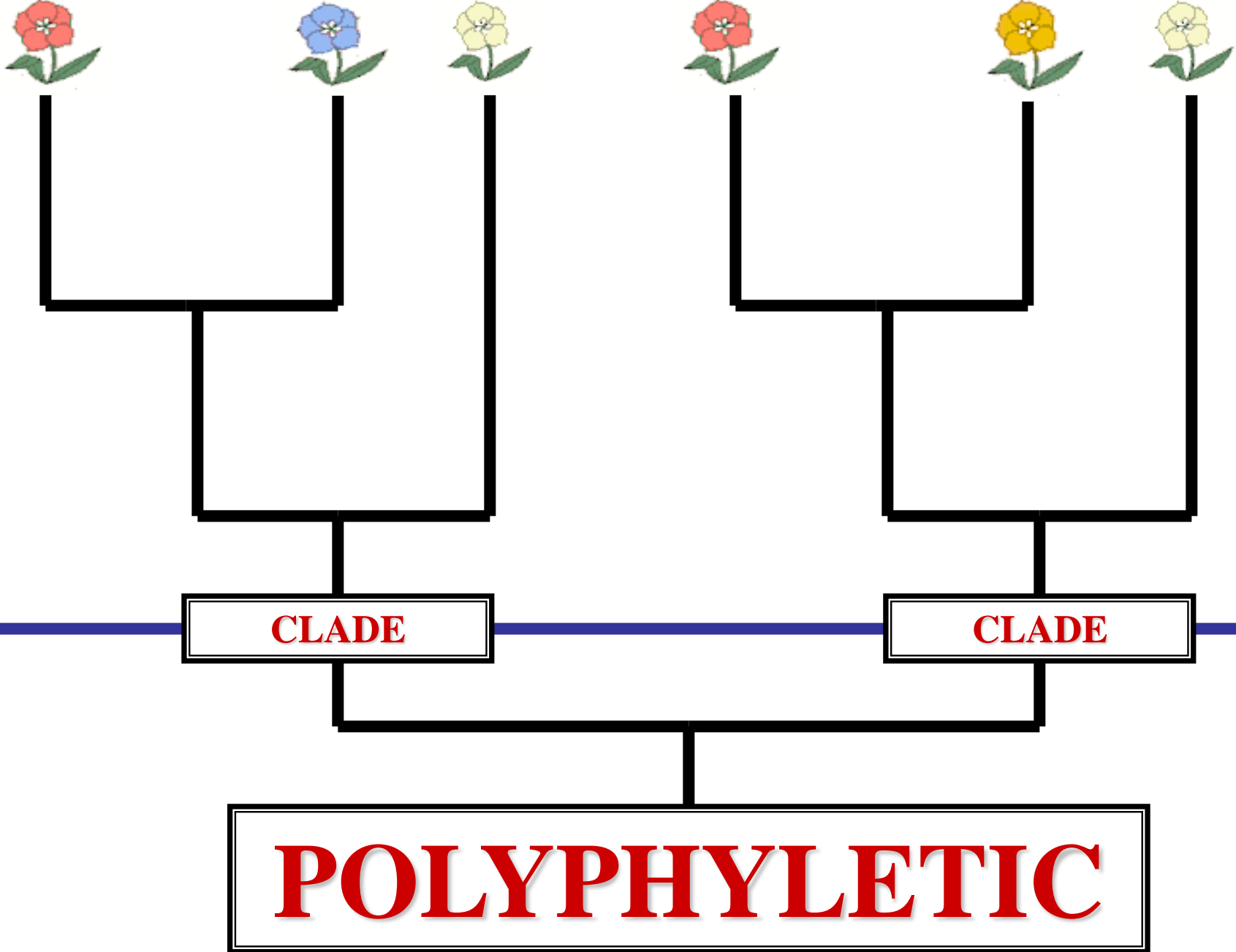
**CLADE**

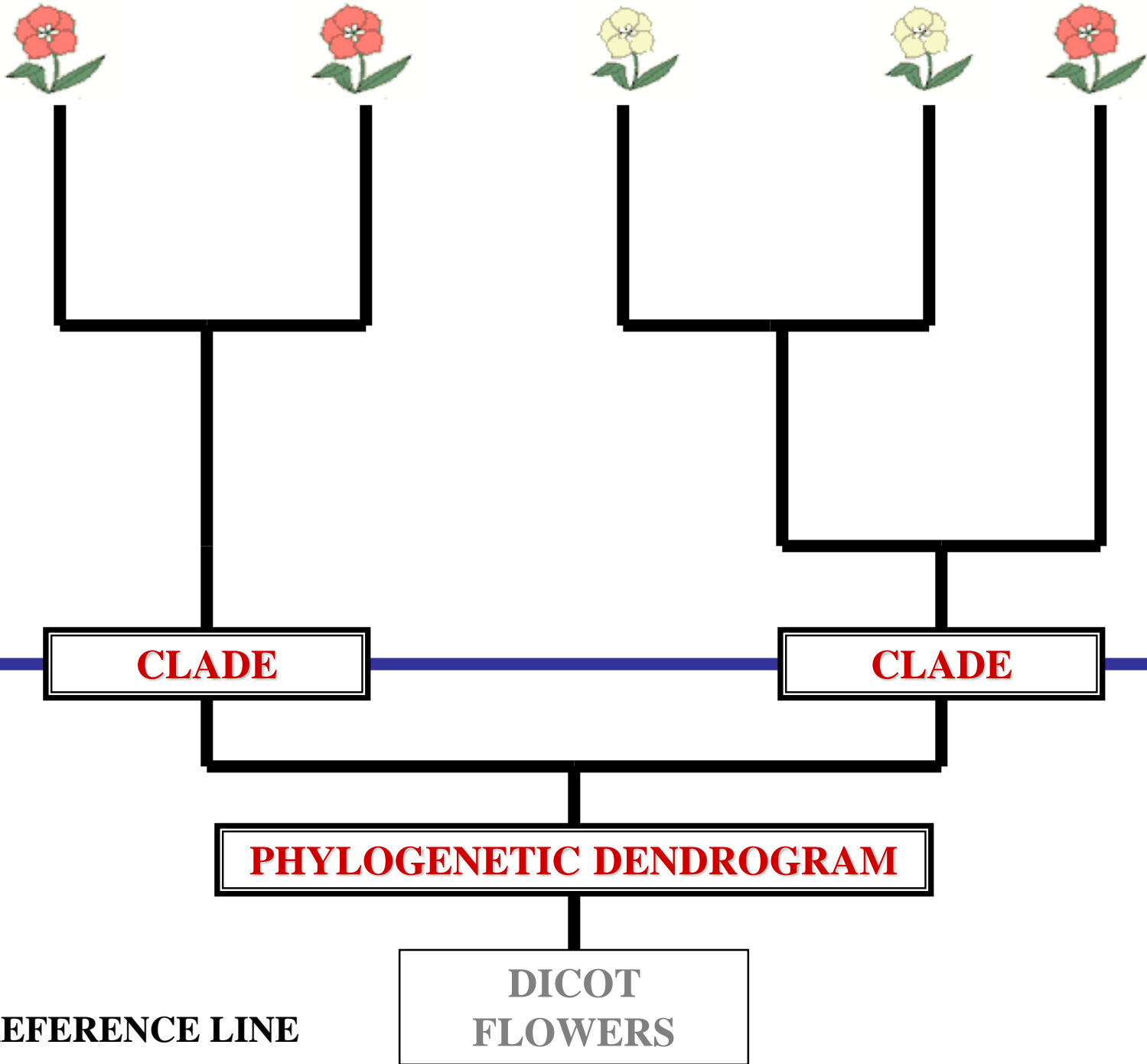




**PO**





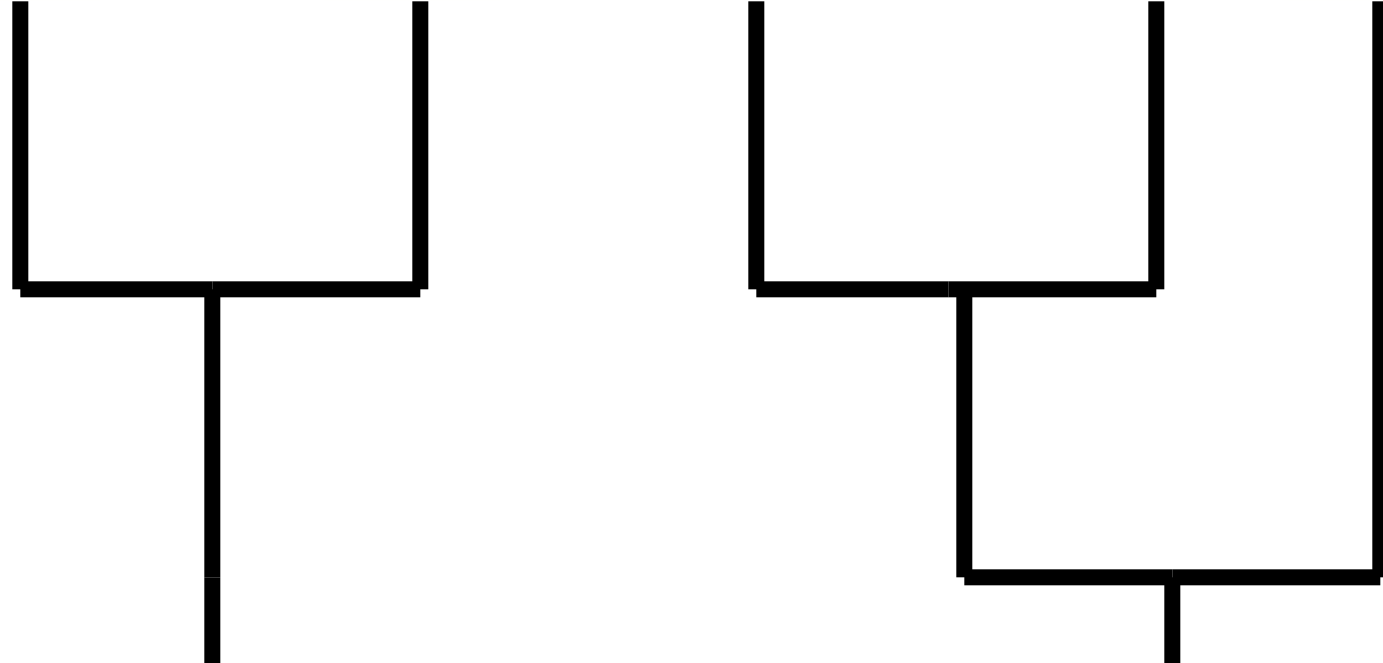


**— = REFERENCE LINE**

**PHYLOGENETIC DENDROGRAM**

**DICOT  
FLOWERS**





**CLADE**

**POLYPHYLETIC**

**PHYLOGENETIC DENDROGRAM**

DICOT  
FLOWERS

 = REFERENCE LINE



PA



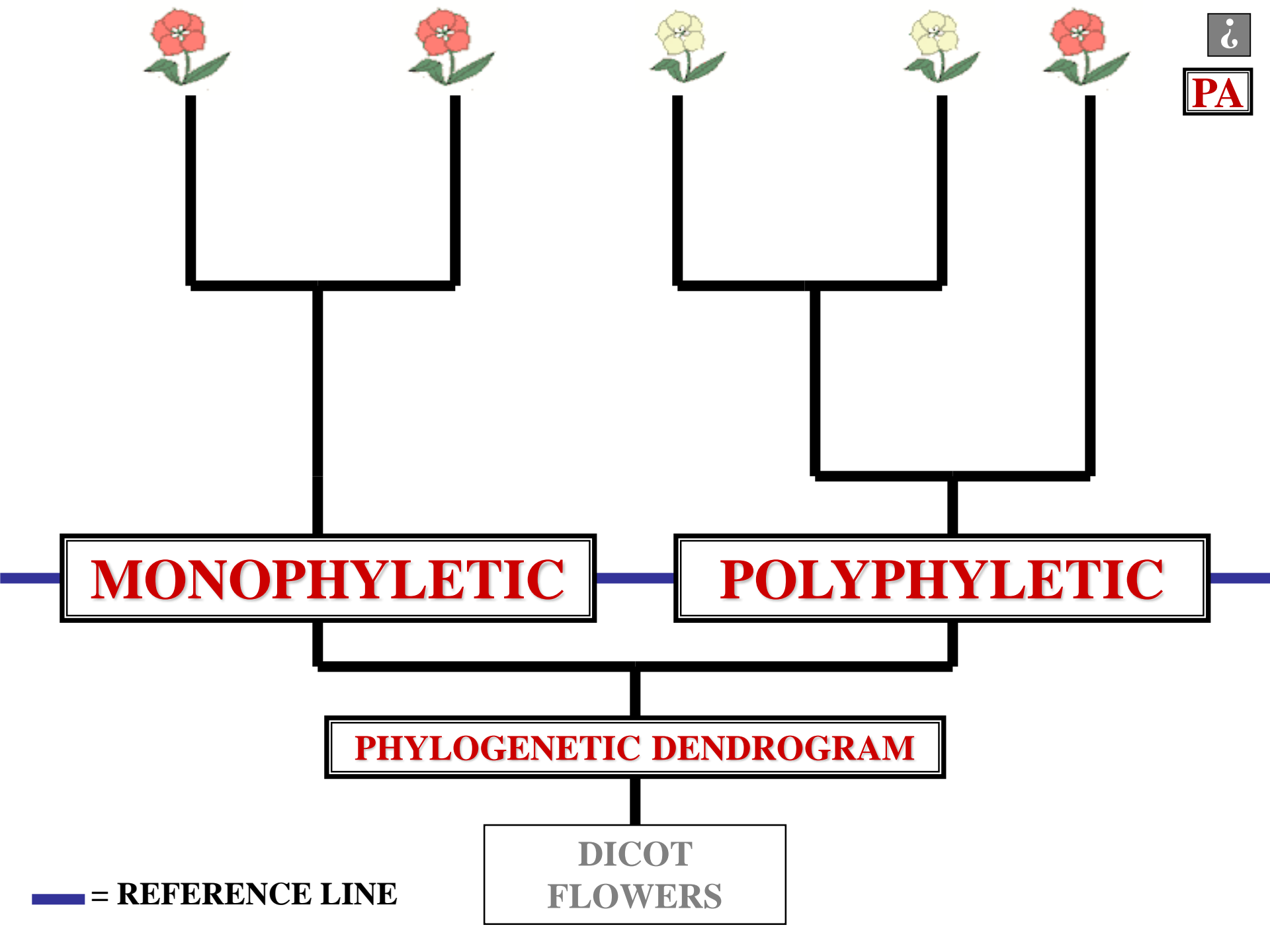
**MONOPHYLETIC**

**POLYPHYLETIC**

**PHYLOGENETIC DENDROGRAM**

DICOT  
FLOWERS

 = REFERENCE LINE





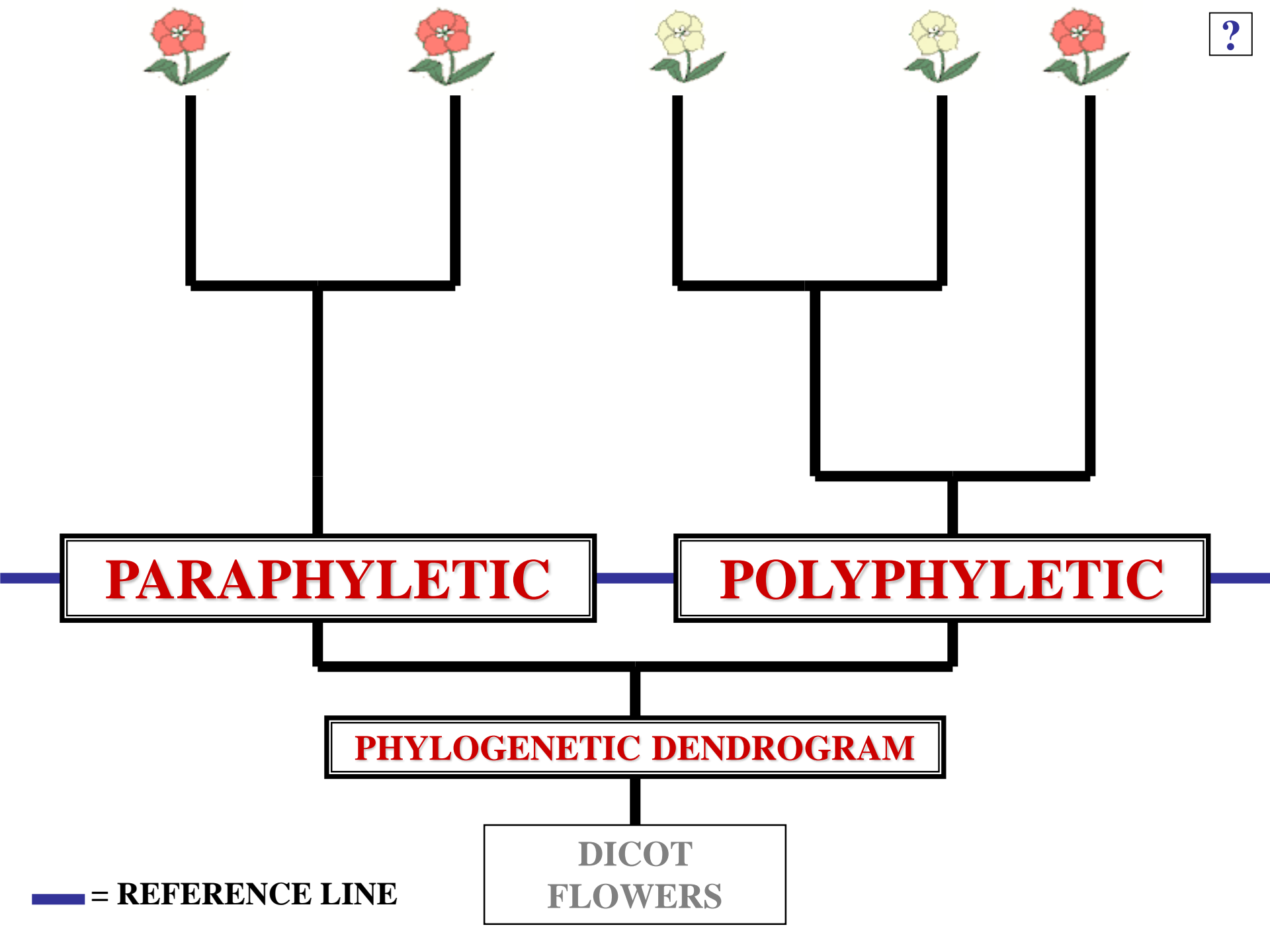
**PARAPHYLETIC**

**POLYPHYLETIC**

**PHYLOGENETIC DENDROGRAM**

DICOT  
FLOWERS

 = REFERENCE LINE



**QUESTION**

**BOTANISTS PREFER**

**MONOPHYLETIC**

**OR**

**POLYPHYLETIC**

**TAXA?**

**QUESTION**



**BOTANISTS  
PREFER  
MONOPHYLETIC  
TAXA**

**END  
MATERIAL  
FINAL  
EXAM**