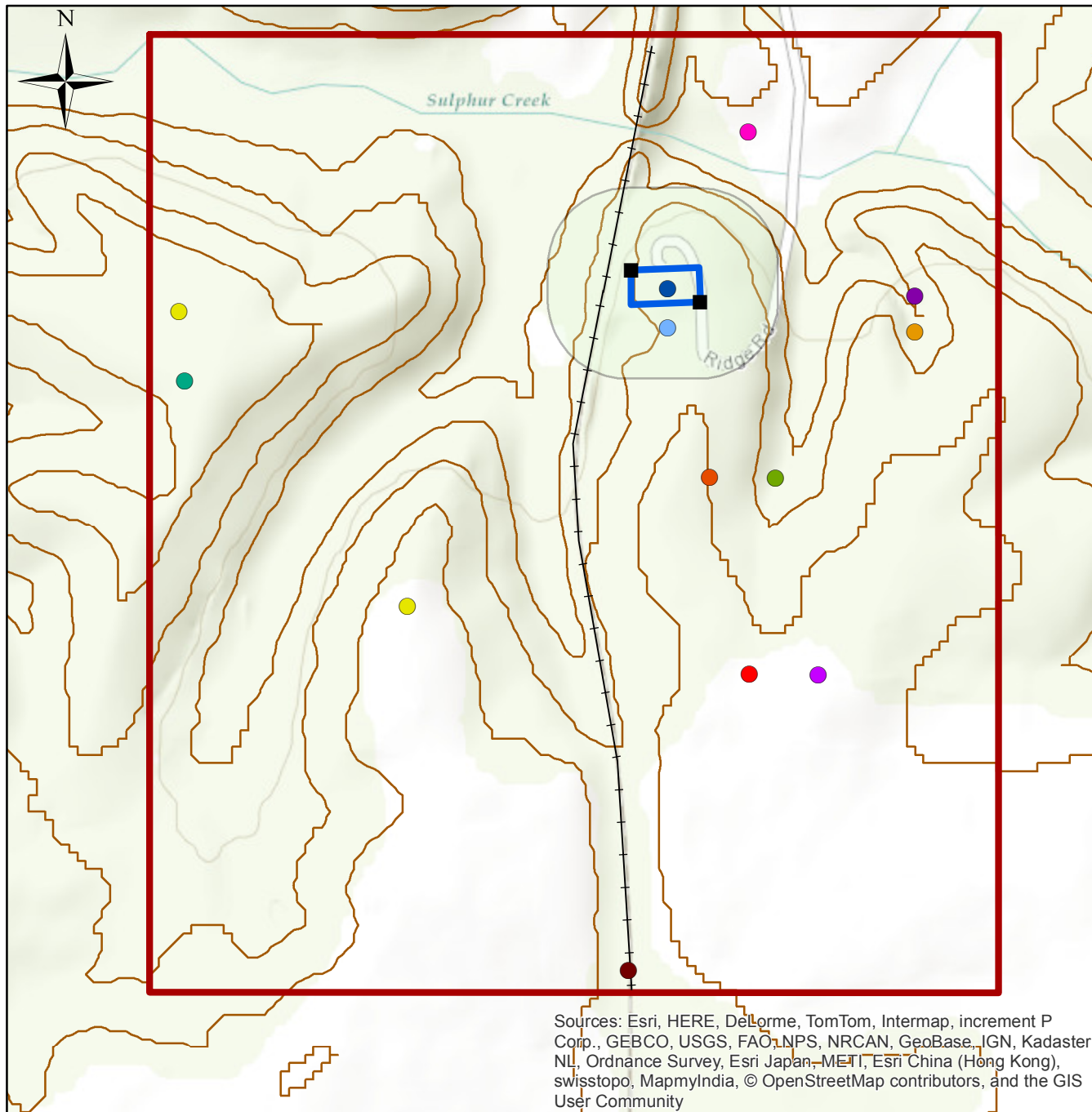


The Battle of Sulphur Creek Trestle



- Ferrell's Battery
- Morton's Battery 3
- Walton's Battery
- Johnson's Brigade
- Buford's Division
- Kelly's Brigade 1st Position
- Kelly's Brigade 2nd Position
- Morton's 1st Position 12guns
- Union Campsite
- Union Artillery
- Union Rifle Pits
- Union Horse Corral
- General Forrest's Campsite Night of Sept24
- Union Troops 11USCT
3RDTennesseeUnion 9THIndiana
- +— Railway Bridge
- ▭ National Register 1973
- ▭ Proposed Boundary
- ▭ Kelly and Roddey Final Position

0 250 500 1,000 1,500 2,000
Feet

Projection: NAD 1983 UTM Zone 16N

Created by: Lauren Hinton, Katelyn Johnson, Johnathan Steadman
& Dr. Sunhui Sim with UNA Geography 2014