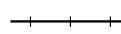



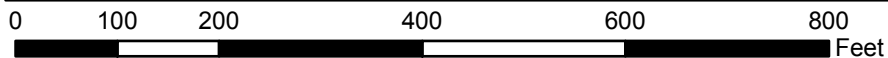
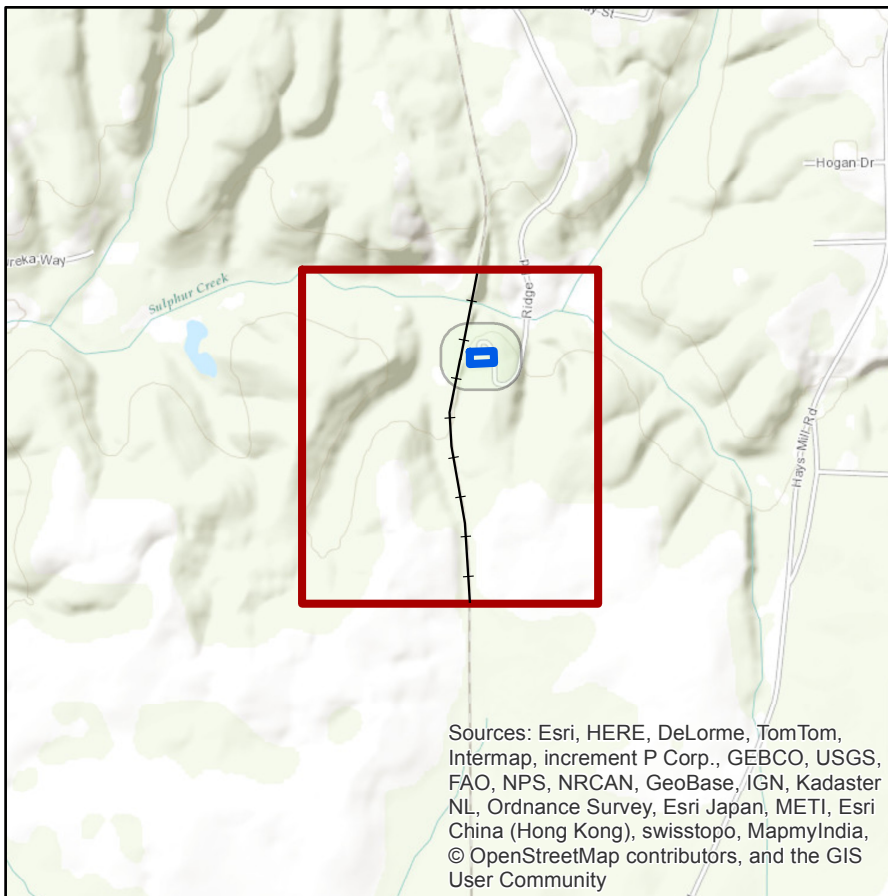


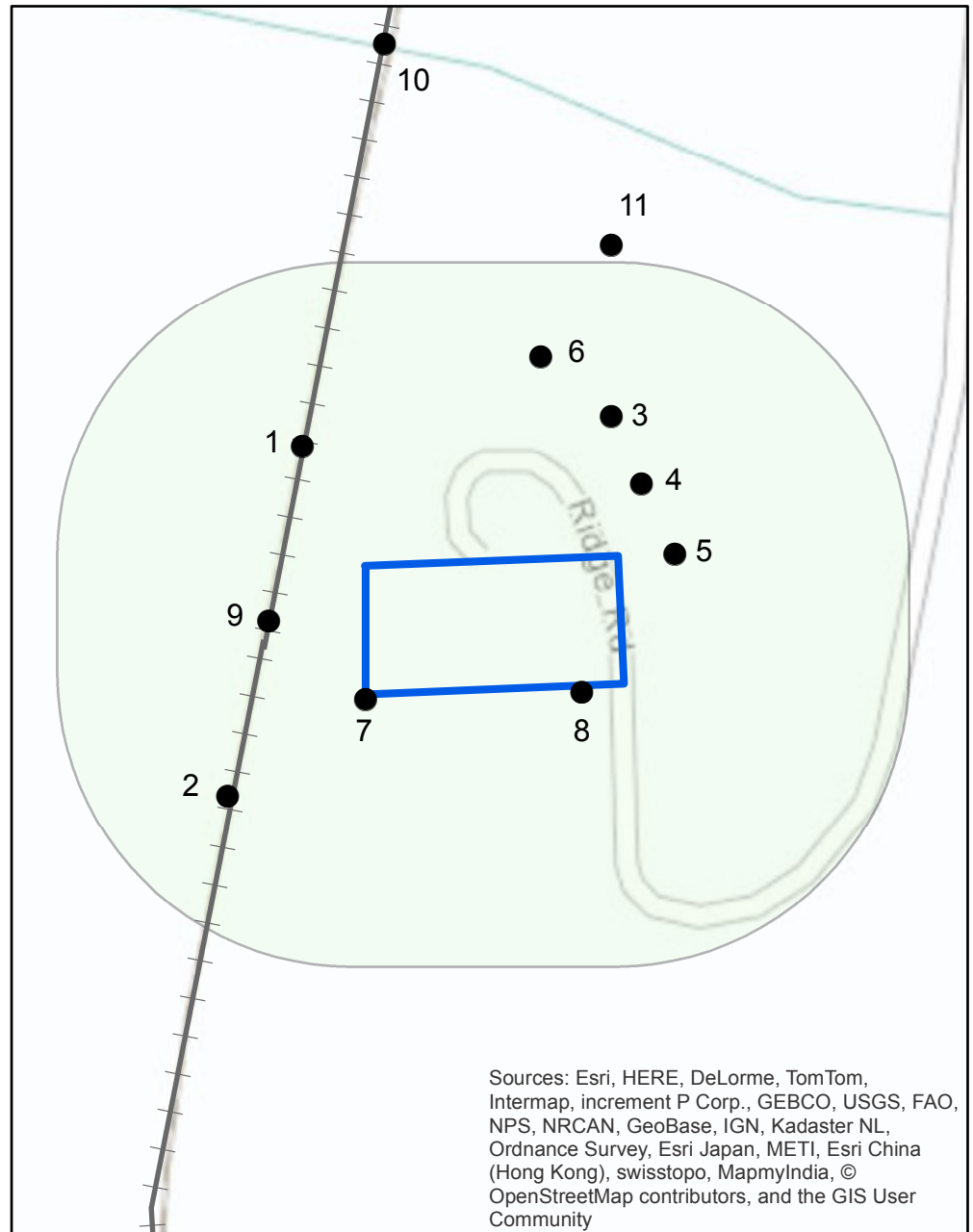
# The Battle of Sulphur Creek Trestle Photo Locations



-  Railway Bridge
-  Proposed Boundary
-  Kelly and Roddey Final Position
-  National Register 1973



Projection: NAD 1983 UTM Zone 16N



Created by: Lauren Hinton, Katelyn Johnson, Johnathan Steadman & Dr. Sunhui Sim with UNA Geography 2014