

# Osprey (*Pandion haliaetus*)

## Number of Priority Blocks with Breeding Evidence

**Total:** 31 of 585 (5%)

**Confirmed:** 14 (45%)

**Probable:** 2 (7%)

**Possible:** 15 (48%)

## Number of Priority Blocks in Ecoregions with Breeding Evidence

**Interior Plateau:** 4 of 52 (8%)

**Southwestern Appalachians:** 8 of 124 (6%)

**Ridge and Valley:** 3 of 72 (4%)

**Piedmont:** 4 of 76 (5%)

**Southeastern Plains:** 9 of 254 (4%)

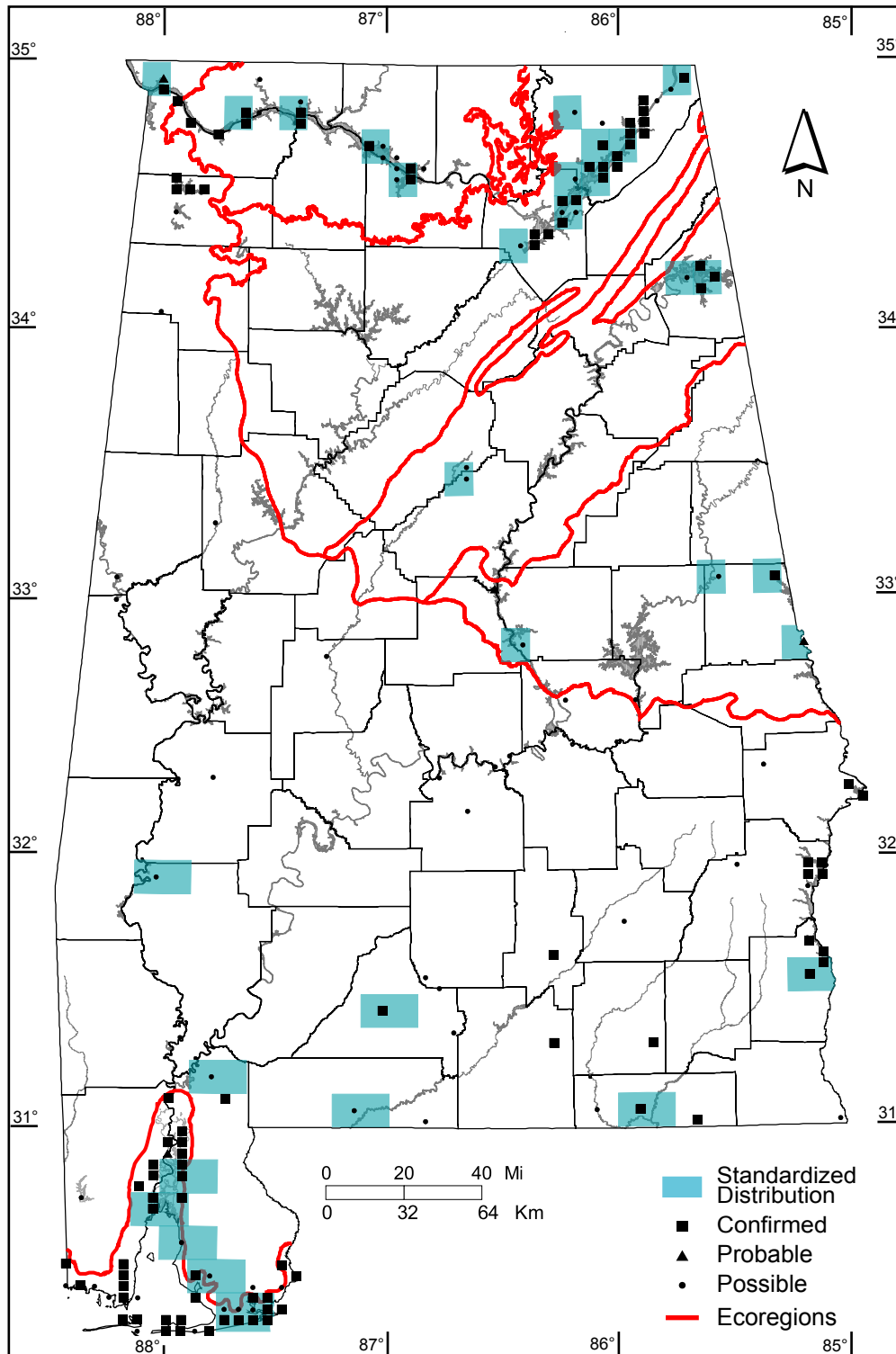
**Southern Coastal Plain:** 3 of 7 (43%)

## Number of Blocks with Breeding Evidence

**Total:** 160 of 5087 (3%)

**Confirmed:** 94 of 5087 (2%)

**Safe Dates:** May 1 - July 31



# Swallow-tailed Kite (*Elanoides forficatus*)

## Number of Priority Blocks with Breeding Evidence

**Total:** 1 of 585 (<1%)

**Confirmed:** 1 (0%)

**Probable:** 0 (0%)

**Possible:** 0 (0%)

## Number of Priority Blocks in Ecoregions with Breeding Evidence

**Interior Plateau:** 0 of 52 (0%)

**Southwestern Appalachians:** 0 of 124 (0%)

**Ridge and Valley:** 0 of 72 (0%)

**Piedmont:** 0 of 76 (0%)

**Southeastern Plains:** 1 of 254 (<1%)

**Southern Coastal Plain:** 0 of 7 (0%)

## Number of Blocks with Breeding Evidence

**Total:** 10 of 5087 (<1%)

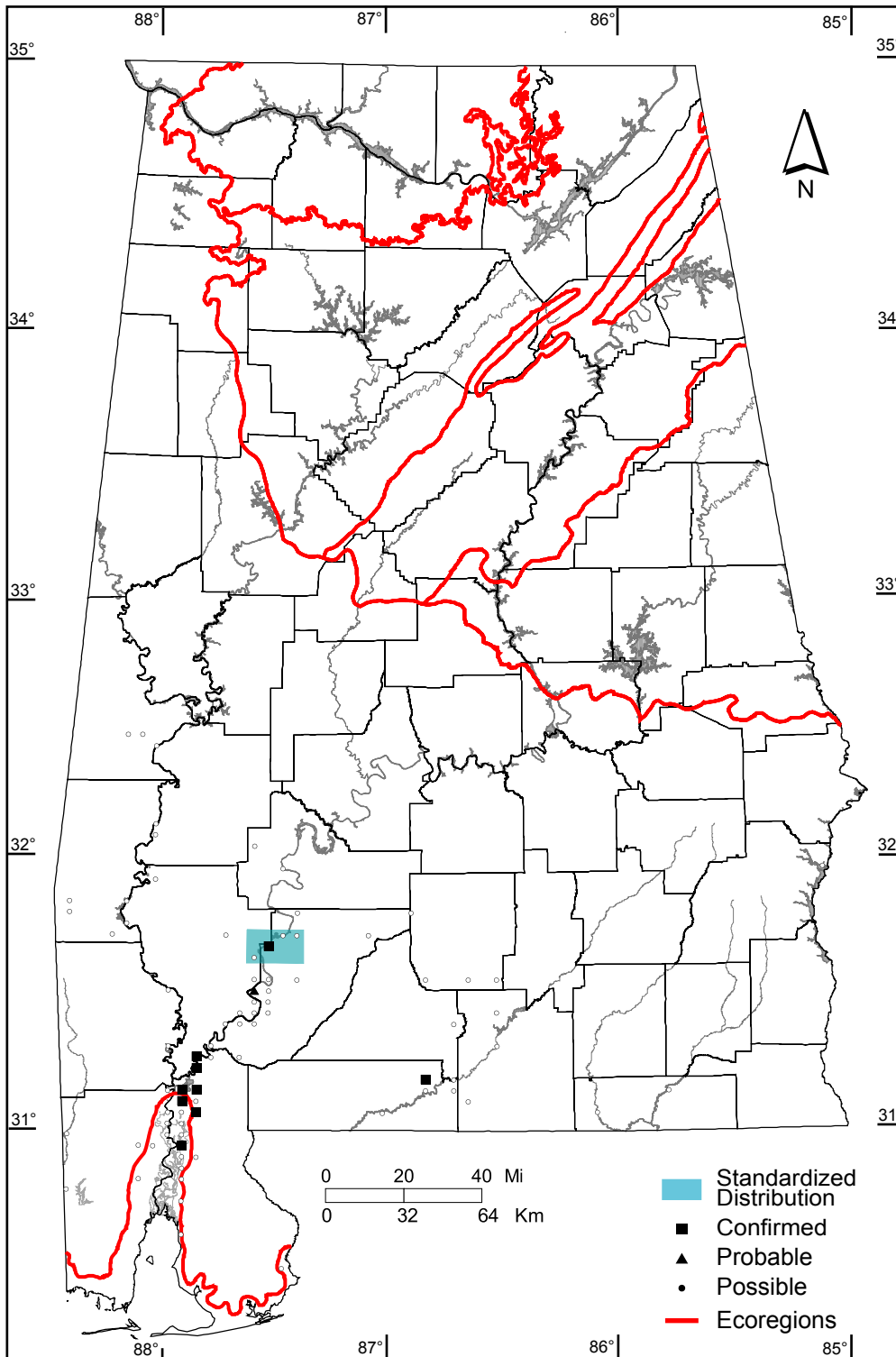
**Confirmed:** 9 of 5087 (<1%)

## Number of Blocks with Nonbreeding Records

**Observed:** 71 of 5087 (1%)

**Safe Dates:** April 20 - June 15

Swallow-tailed Kites forage widely and determining the actual breeding distribution is difficult. Most sightings of soaring birds received "observed" designation.



# Mississippi Kite (*Ictinia mississippiensis*)

## Number of Priority Blocks with Breeding Evidence

**Total:** 77 of 585 (13%)

**Confirmed:** 6 (8%)

**Probable:** 20 (26%)

**Possible:** 51 (66%)

## Number of Priority Blocks in Ecoregions with Breeding Evidence

**Interior Plateau:** 0 of 52 (0%)

**Southwestern Appalachians:** 0 of 124 (0%)

**Ridge and Valley:** 1 of 72 (1%)

**Piedmont:** 4 of 76 (5%)

**Southeastern Plains:** 69 of 254 (27%)

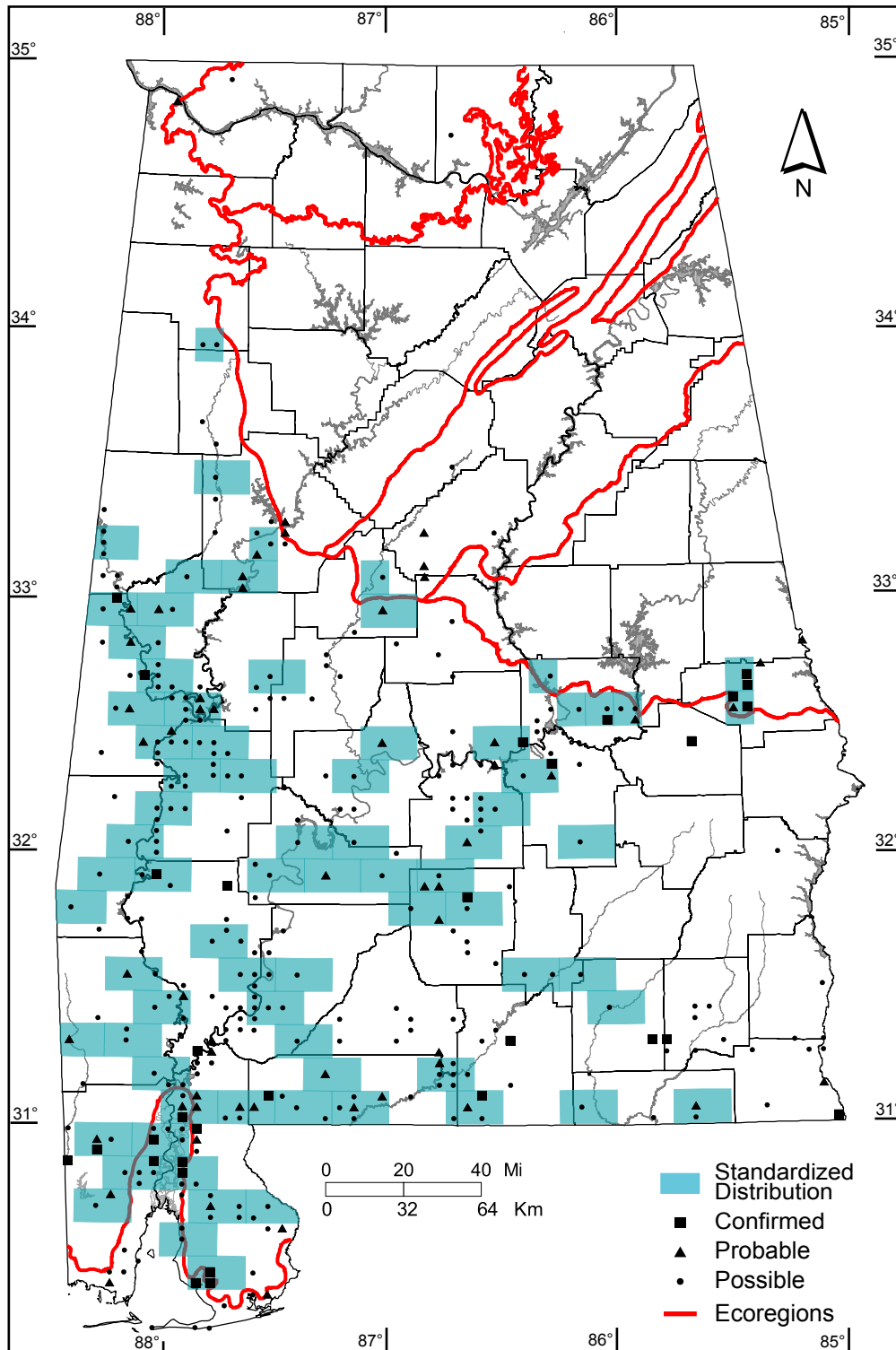
**Southern Coastal Plain:** 3 of 7 (43%)

## Number of Blocks with Breeding Evidence

**Total:** 350 of 5087 (7%)

**Confirmed:** 31 of 5087 (1%)

**Safe Dates:** May 1 - July 10



# Bald Eagle (*Haliaeetus leucocephalus*)

## Number of Priority Blocks with Breeding Evidence

**Total:** 8 of 585 (1%)  
**Confirmed:** 8 (100%)  
**Probable:** 0 (0%)  
**Possible:** 0 (0%)

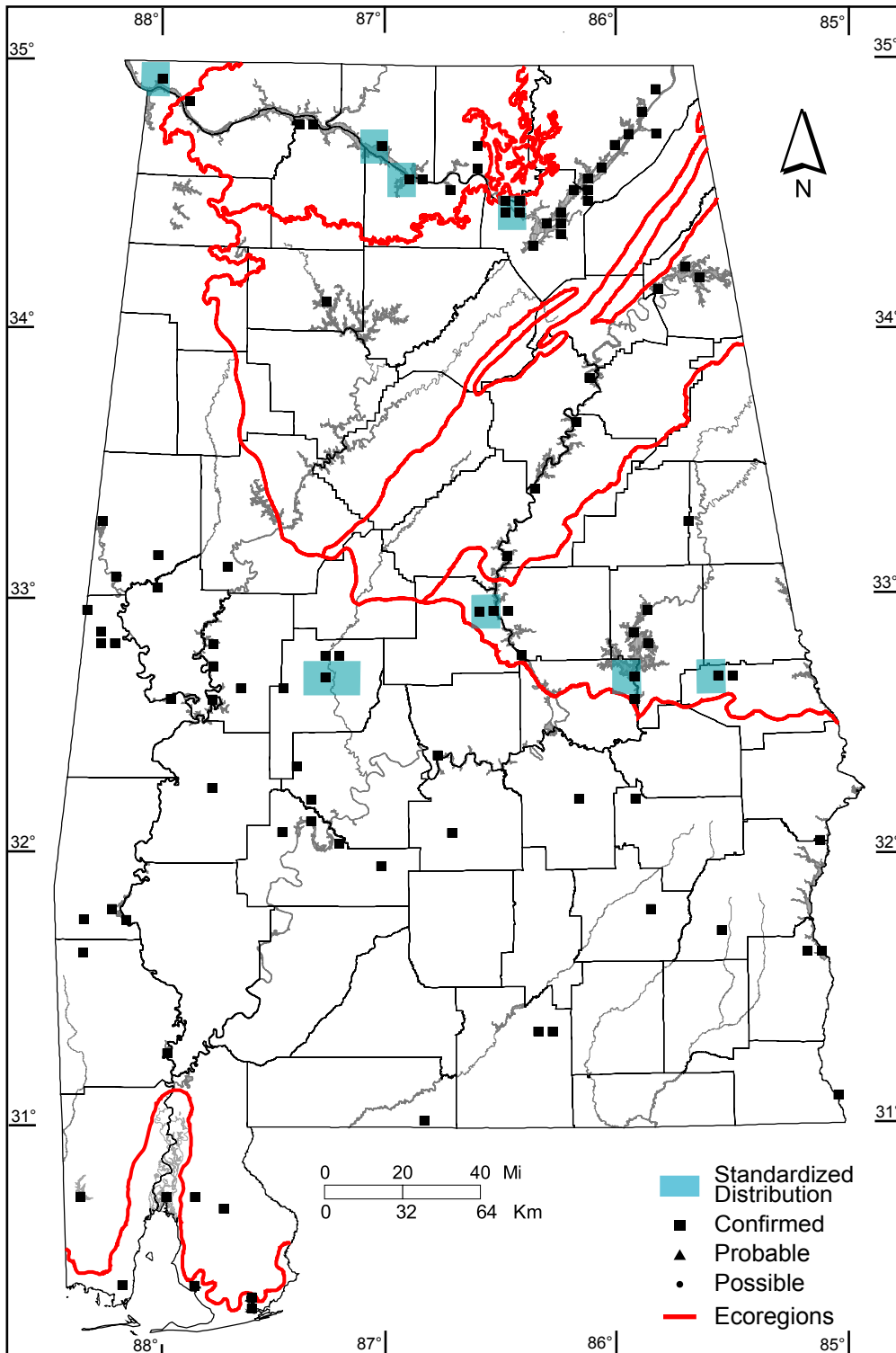
## Number of Priority Blocks in Ecoregions with Breeding Evidence

**Interior Plateau:** 2 of 52 (4%)  
**Southwestern Appalachians:** 1 of 124 (1%)  
**Ridge and Valley:** 0 of 72 (0%)  
**Piedmont:** 3 of 76 (4%)  
**Southeastern Plains:** 2 of 254 (1%)  
**Southern Coastal Plain:** 0 of 7 (0%)

## Number of Blocks with Breeding Evidence

**Total:** 100 of 5087 (2%)  
**Confirmed:** 100 of 5087 (2%)

**Safe Dates:** December 15 - May 1



# Sharp-shinned Hawk (*Accipiter striatus*)

## Number of Priority Blocks with Breeding Evidence

**Total:** 38 of 585 (7%)

**Confirmed:** 5 (13%)

**Probable:** 3 (8%)

**Possible:** 30 (79%)

## Number of Priority Blocks in Ecoregions with Breeding Evidence

**Interior Plateau:** 7 of 52 (13%)

**Southwestern Appalachians:** 14 of 124 (11%)

**Ridge and Valley:** 4 of 72 (6%)

**Piedmont:** 5 of 76 (7%)

**Southeastern Plains:** 8 of 254 (3%)

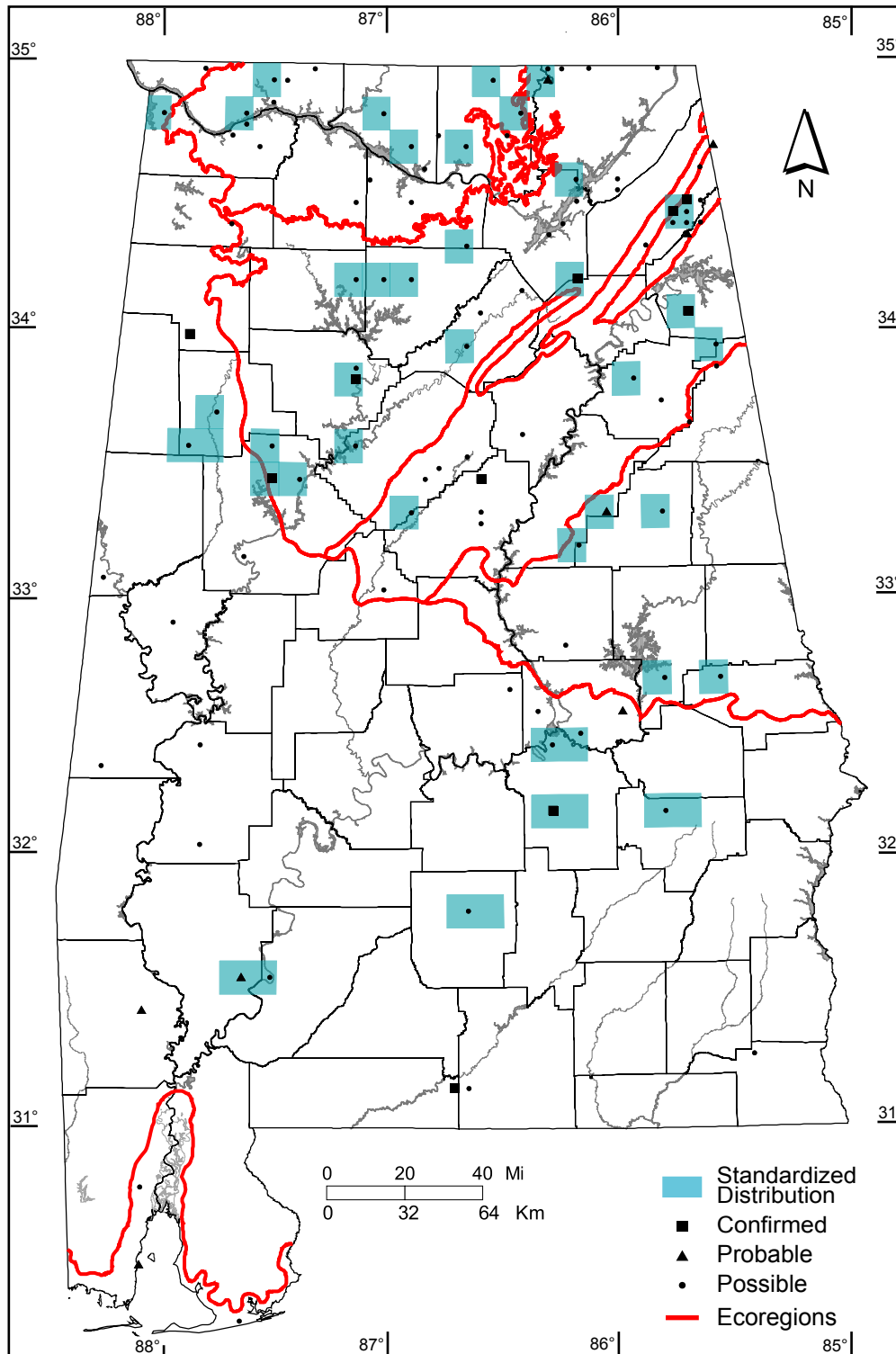
**Southern Coastal Plain:** 0 of 7 (0%)

## Number of Blocks with Breeding Evidence

**Total:** 106 of 5087 (2%)

**Confirmed:** 10 of 5087 (<1%)

**Safe Dates:** May 15 - July 31



# Cooper's Hawk (*Accipiter cooperii*)

## Number of Priority Blocks with Breeding Evidence

**Total:** 159 of 585 (27%)

**Confirmed:** 13 (8%)

**Probable:** 18 (11%)

**Possible:** 128 (81%)

## Number of Priority Blocks in Ecoregions with Breeding Evidence

**Interior Plateau:** 19 of 52 (37%)

**Southwestern Appalachians:** 53 of 124 (43%)

**Ridge and Valley:** 25 of 72 (35%)

**Piedmont:** 17 of 76 (22%)

**Southeastern Plains:** 44 of 254 (17%)

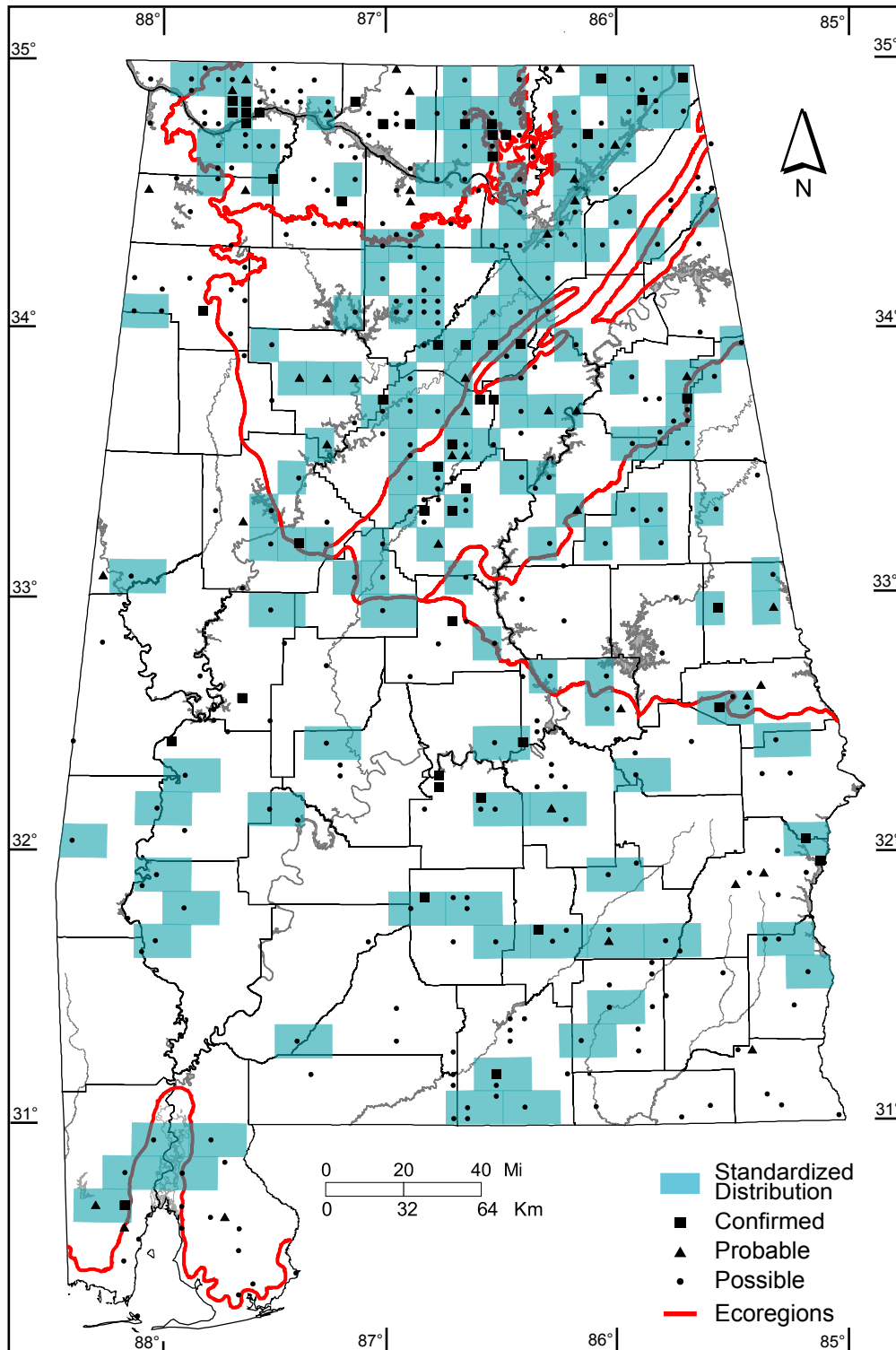
**Southern Coastal Plain:** 1 of 7 (14%)

## Number of Blocks with Breeding Evidence

**Total:** 427 of 5087 (8%)

**Confirmed:** 50 of 5087 (1%)

**Safe Dates:** May 15 - July 31



# Red-shouldered Hawk (*Buteo lineatus*)

## Number of Priority Blocks with Breeding Evidence

**Total:** 473 of 585 (81%)

**Confirmed:** 93 (20%)

**Probable:** 104 (22%)

**Possible:** 276 (58%)

## Number of Priority Blocks in Ecoregions with Breeding Evidence

**Interior Plateau:** 18 of 52 (35%)

**Southwestern Appalachians:** 100 of 124 (81%)

**Ridge and Valley:** 65 of 72 (90%)

**Piedmont:** 65 of 76 (86%)

**Southeastern Plains:** 220 of 254 (87%)

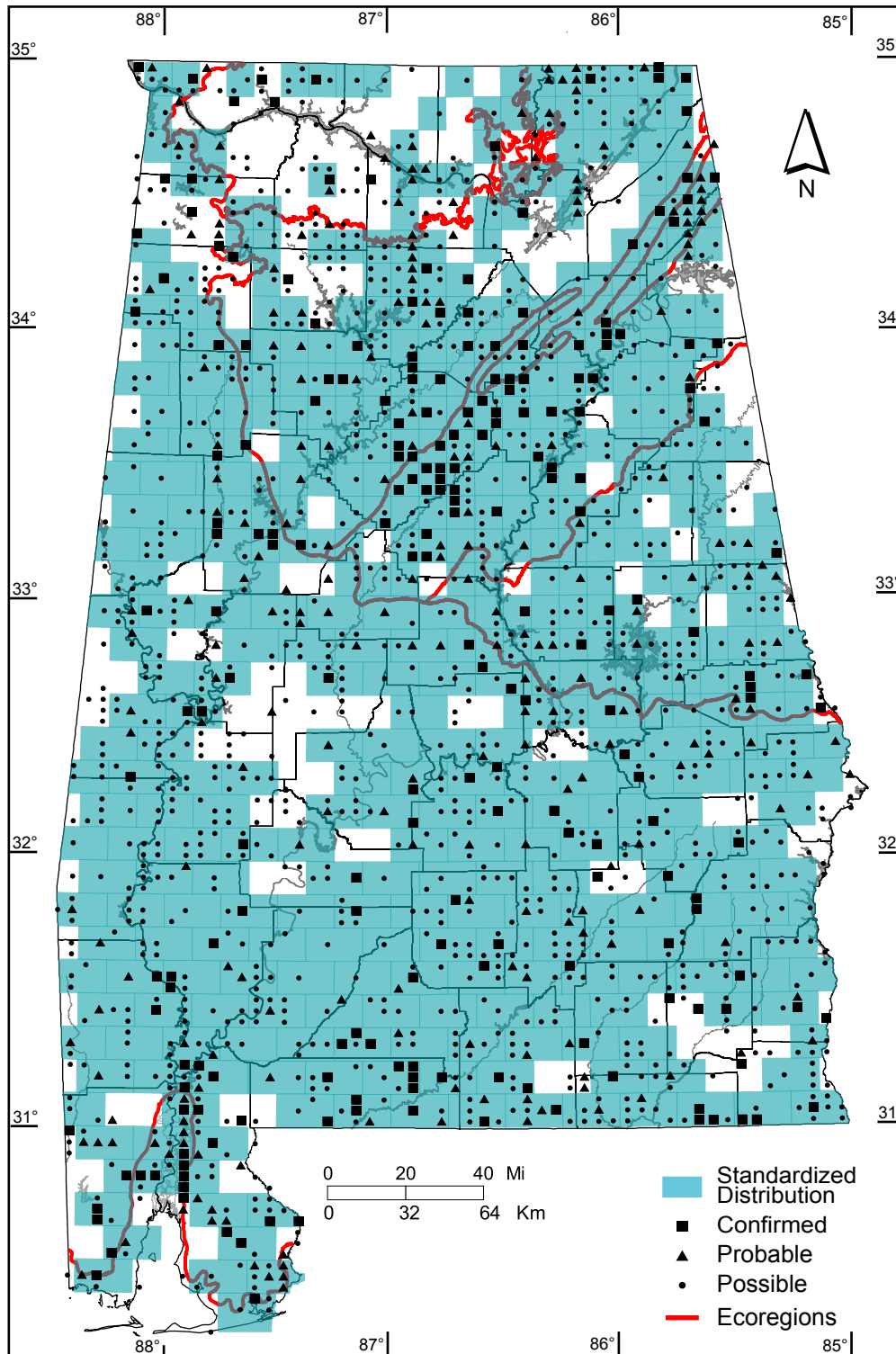
**Southern Coastal Plain:** 5 of 7 (71%)

## Number of Blocks with Breeding Evidence

**Total:** 1573 of 5087 (31%)

**Confirmed:** 223 of 5087 (4%)

**Safe Dates:** March 15 - July 31



©Alabama Breeding Bird Atlas  
All Rights Reserved

# Broad-winged Hawk (*Buteo platypterus*)

## Number of Priority Blocks with Breeding Evidence

**Total:** 236 of 585 (40%)

**Confirmed:** 41 (17%)

**Probable:** 35 (15%)

**Possible:** 160 (68%)

## Number of Priority Blocks in Ecoregions with Breeding Evidence

**Interior Plateau:** 18 of 52 (35%)

**Southwestern Appalachians:** 65 of 124 (52%)

**Ridge and Valley:** 39 of 72 (54%)

**Piedmont:** 33 of 76 (43%)

**Southeastern Plains:** 78 of 254 (31%)

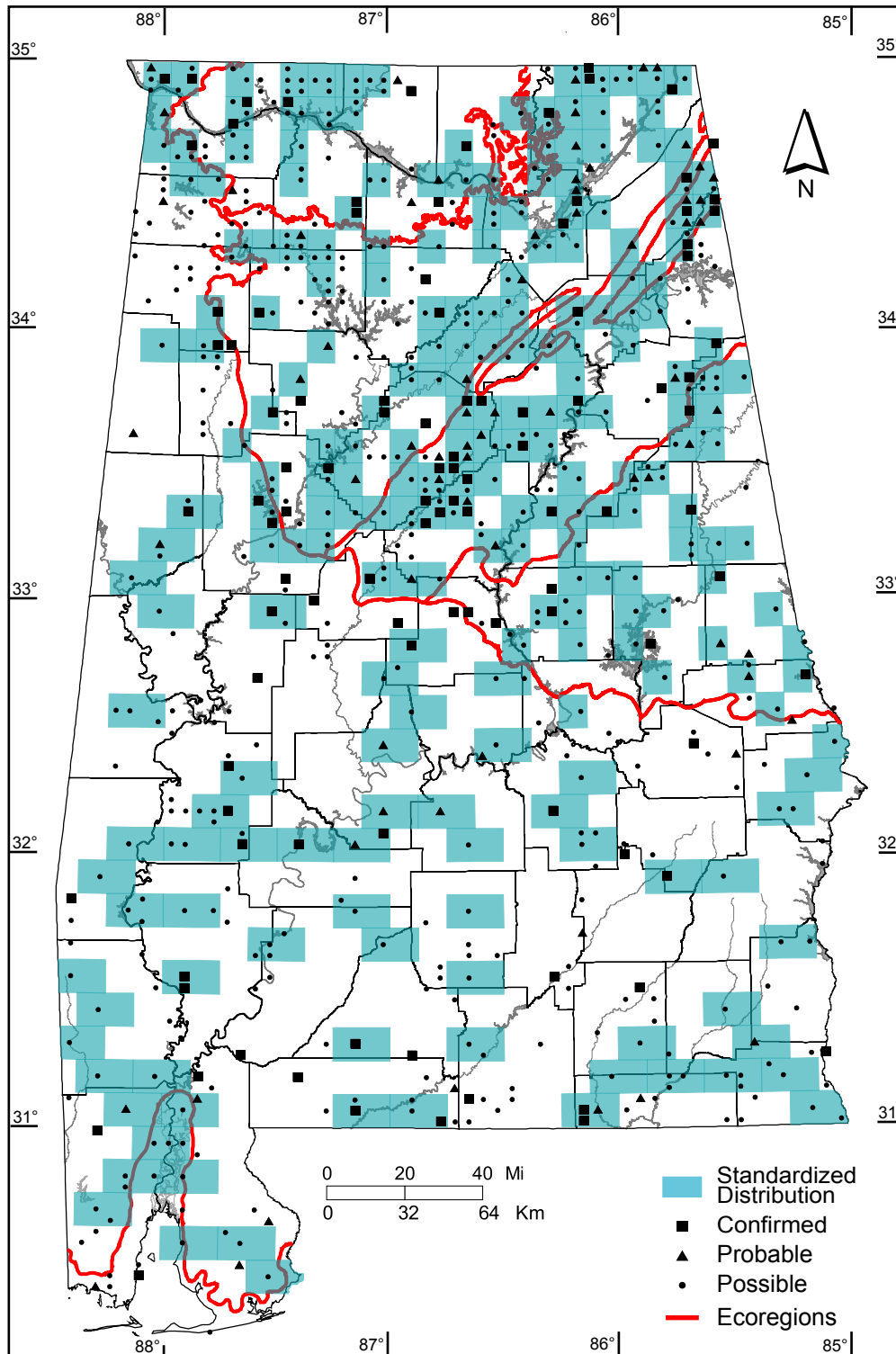
**Southern Coastal Plain:** 3 of 7 (43%)

## Number of Blocks with Breeding Evidence

**Total:** 647 of 5087 (13%)

**Confirmed:** 105 of 5087 (2%)

**Safe Dates:** May 25 - July 15





# Red-tailed Hawk (*Buteo jamaicensis*)

## Number of Priority Blocks with Breeding Evidence

**Total:** 464 of 585 (79%)  
**Confirmed:** 96 (21%)  
**Probable:** 93 (20%)  
**Possible:** 275 (59%)

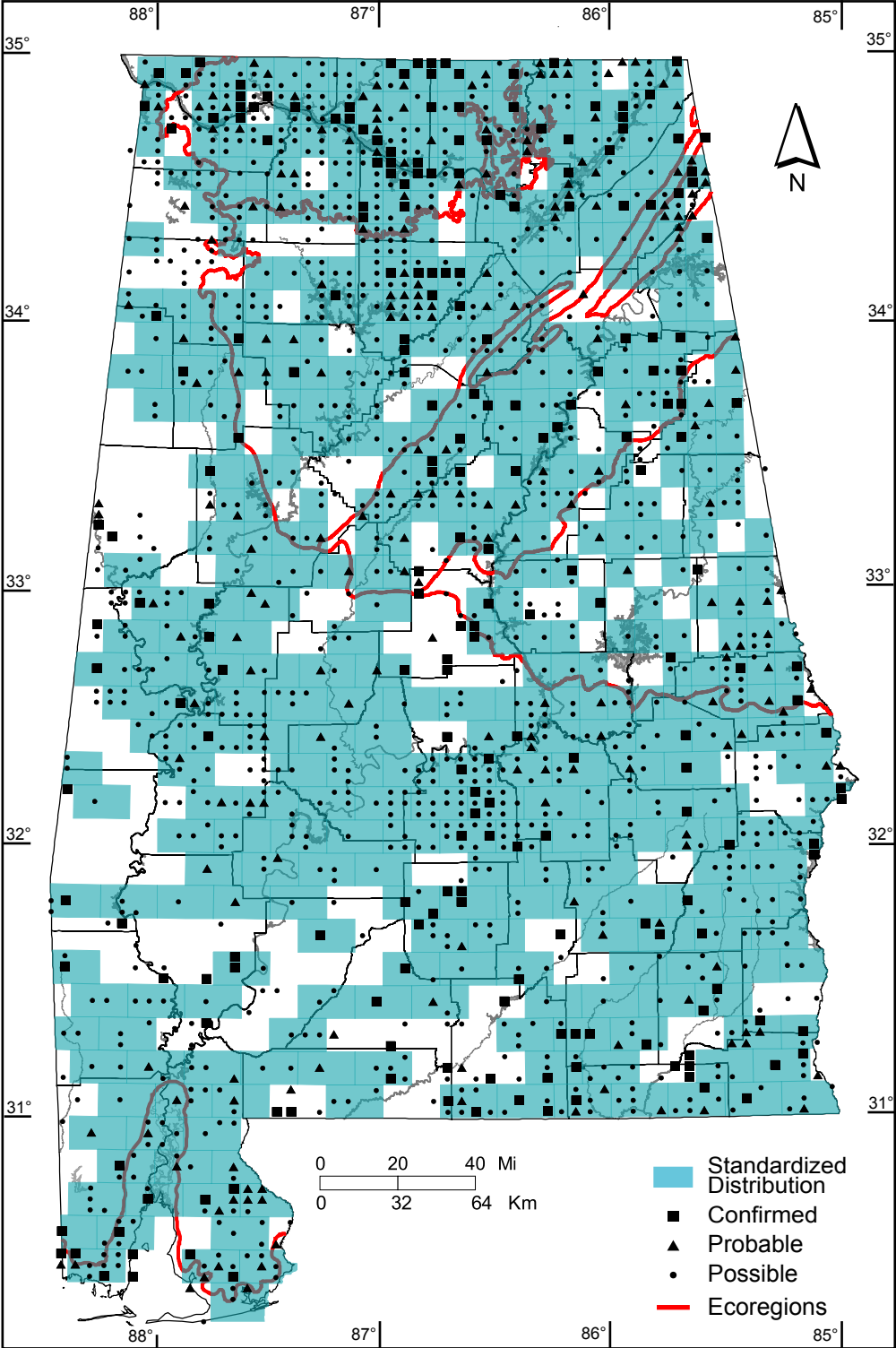
## Number of Priority Blocks in Ecoregions with Breeding Evidence

**Interior Plateau:** 49 of 52 (94%)  
**Southwestern Appalachians:** 100 of 124 (81%)  
**Ridge and Valley:** 62 of 72 (86%)  
**Piedmont:** 56 of 76 (74%)  
**Southeastern Plains:** 191 of 254 (75%)  
**Southern Coastal Plain:** 6 of 7 (86%)

## Number of Blocks with Breeding Evidence

**Total:** 1445 of 5087 (28%)  
**Confirmed:** 225 of 5087 (4%)

**Safe Dates:** May 1 - July 15



# American Kestrel (*Falco sparverius*)

## Number of Priority Blocks with Breeding Evidence

**Total:** 98 of 585 (17%)

**Confirmed:** 20 (20%)

**Probable:** 20 (20%)

**Possible:** 58 (60%)

## Number of Priority Blocks in Ecoregions with Breeding Evidence

**Interior Plateau:** 33 of 52 (63%)

**Southwestern Appalachians:** 42 of 124 (34%)

**Ridge and Valley:** 12 of 72 (17%)

**Piedmont:** 2 of 76 (3%)

**Southeastern Plains:** 9 of 254 (4%)

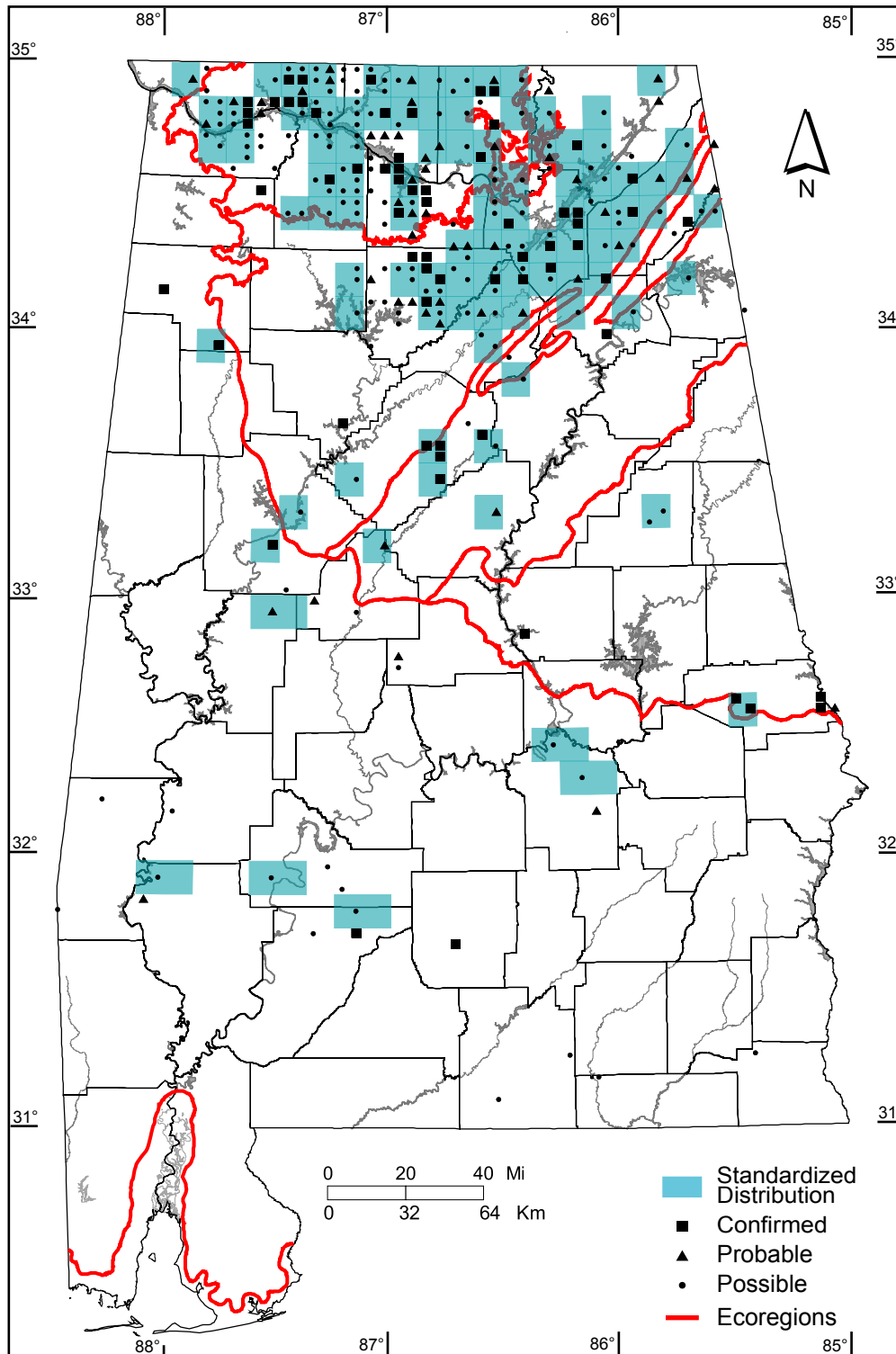
**Southern Coastal Plain:** 0 of 7 (0%)

## Number of Blocks with Breeding Evidence

**Total:** 276 of 5087 (5%)

**Confirmed:** 64 of 5087 (1%)

**Safe Dates:** May 15 - July 15



# Clapper Rail (*Rallus longirostris*)

## Number of Priority Blocks with Breeding Evidence

**Total:** 3 of 585 (1%)

**Confirmed:** 1 (33%)

**Probable:** 0 (0%)

**Possible:** 2 (67%)

## Number of Priority Blocks in Ecoregions with Breeding Evidence

**Interior Plateau:** 0 of 52 (0%)

**Southwestern Appalachians:** 0 of 124 (0%)

**Ridge and Valley:** 0 of 72 (0%)

**Piedmont:** 0 of 76 (0%)

**Southeastern Plains:** 0 of 254 (0%)

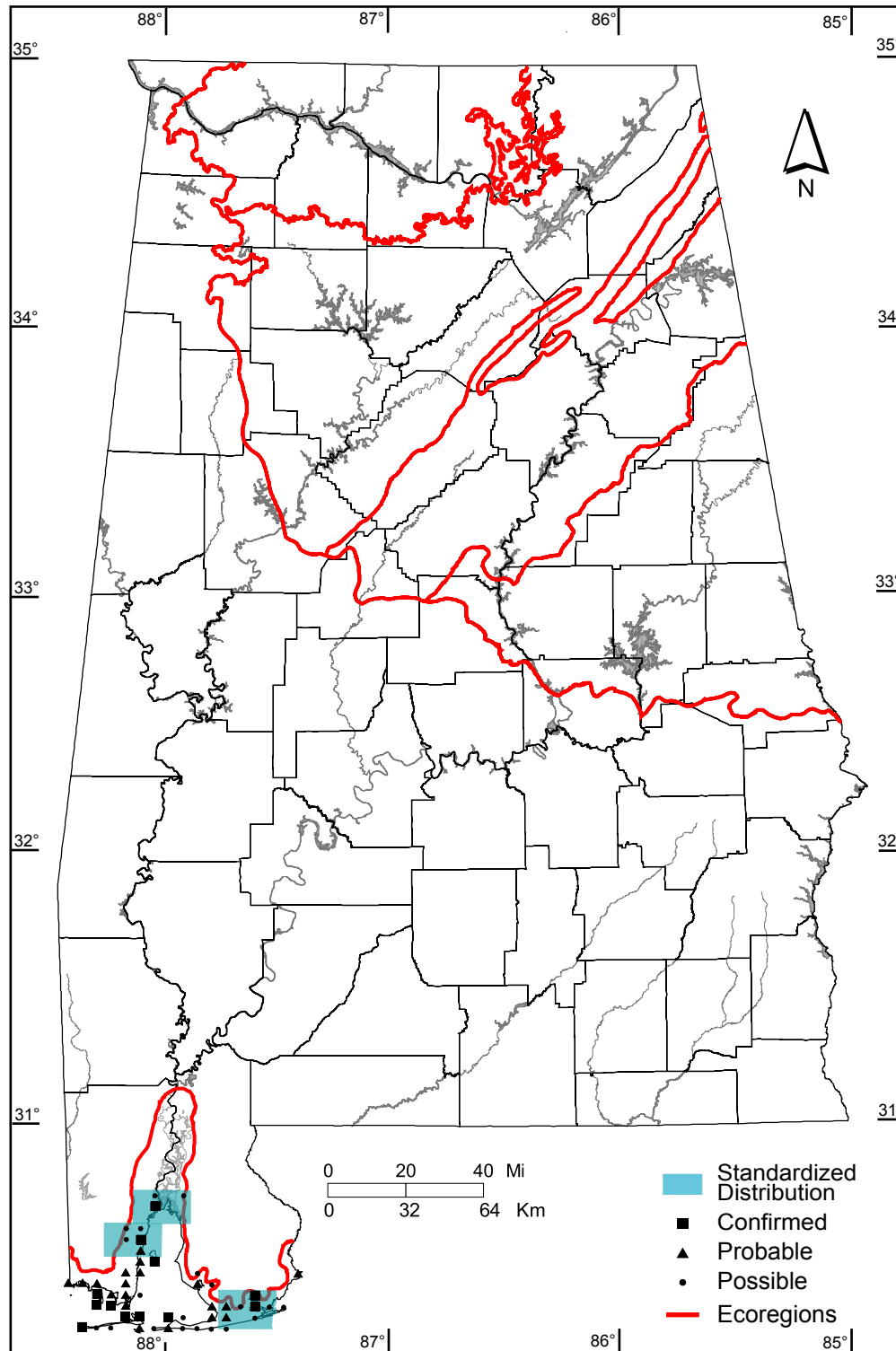
**Southern Coastal Plain:** 3 of 7 (43%)

## Number of Blocks with Breeding Evidence

**Total:** 51 of 5087 (1%)

**Confirmed:** 12 of 5087 (<1%)

**Safe Dates:** May 1 - August 15



©Alabama Breeding Bird Atlas  
All Rights Reserved

# King Rail (*Rallus elegans*)

## Number of Priority Blocks with Breeding Evidence

**Total:** 10 of 585 (2%)

**Confirmed:** 1 (10%)

**Probable:** 4 (40%)

**Possible:** 5 (50%)

## Number of Priority Blocks in Ecoregions with Breeding Evidence

**Interior Plateau:** 1 of 52 (2%)

**Southwestern Appalachians:** 2 of 124 (2%)

**Ridge and Valley:** 0 of 72 (0%)

**Piedmont:** 0 of 76 (0%)

**Southeastern Plains:** 6 of 254 (2%)

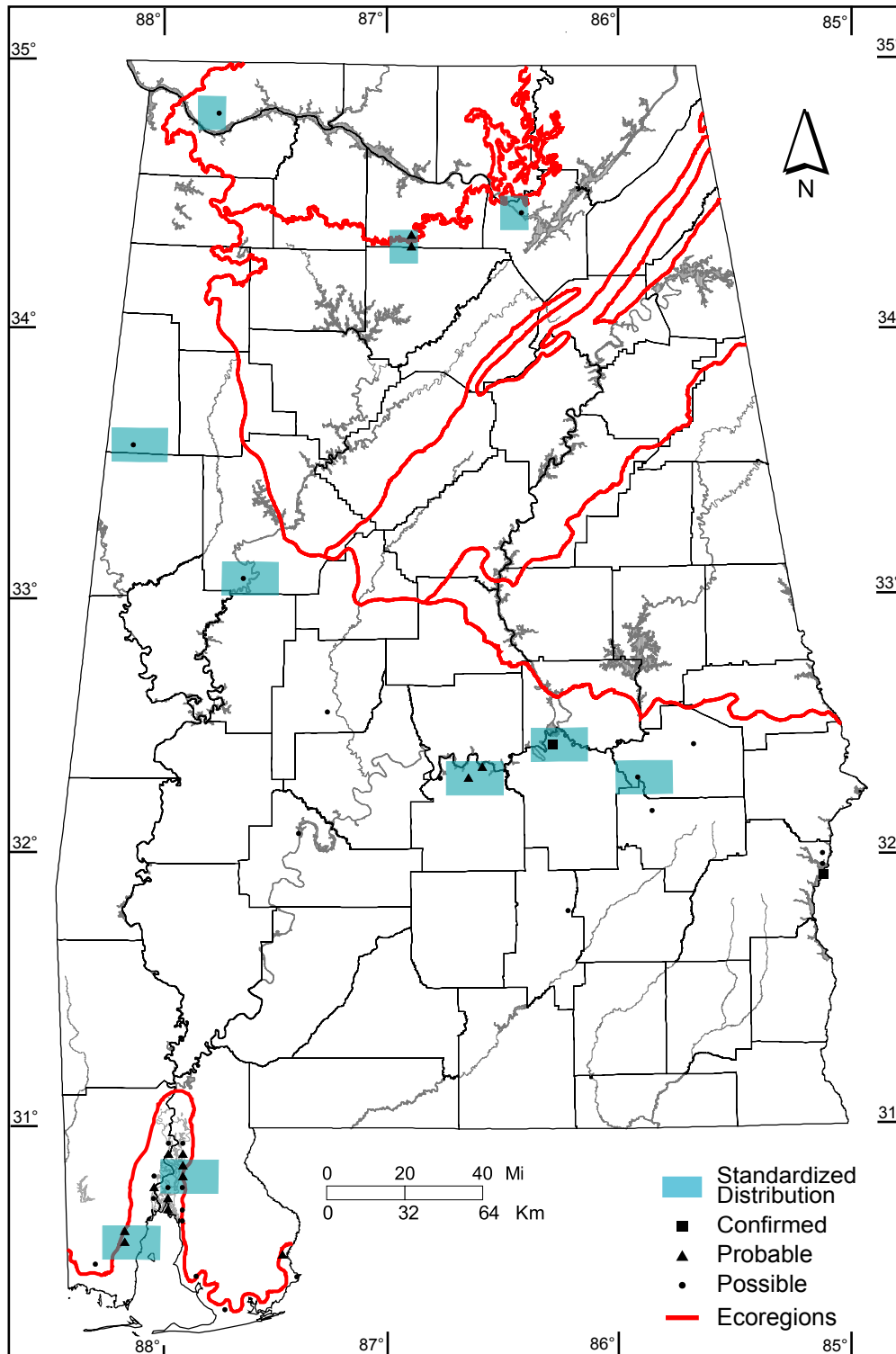
**Southern Coastal Plain:** 1 of 7 (14%)

## Number of Blocks with Breeding Evidence

**Total:** 42 of 5087 (1%)

**Confirmed:** 2 of 5087 (<1%)

**Safe Dates:** May 1 - August 15



# Purple Gallinule (*Porphyrio martinica*)

## Number of Priority Blocks with Breeding Evidence

**Total:** 7 of 585 (1%)  
**Confirmed:** 3 (43%)  
**Probable:** 1 (14%)  
**Possible:** 3 (43%)

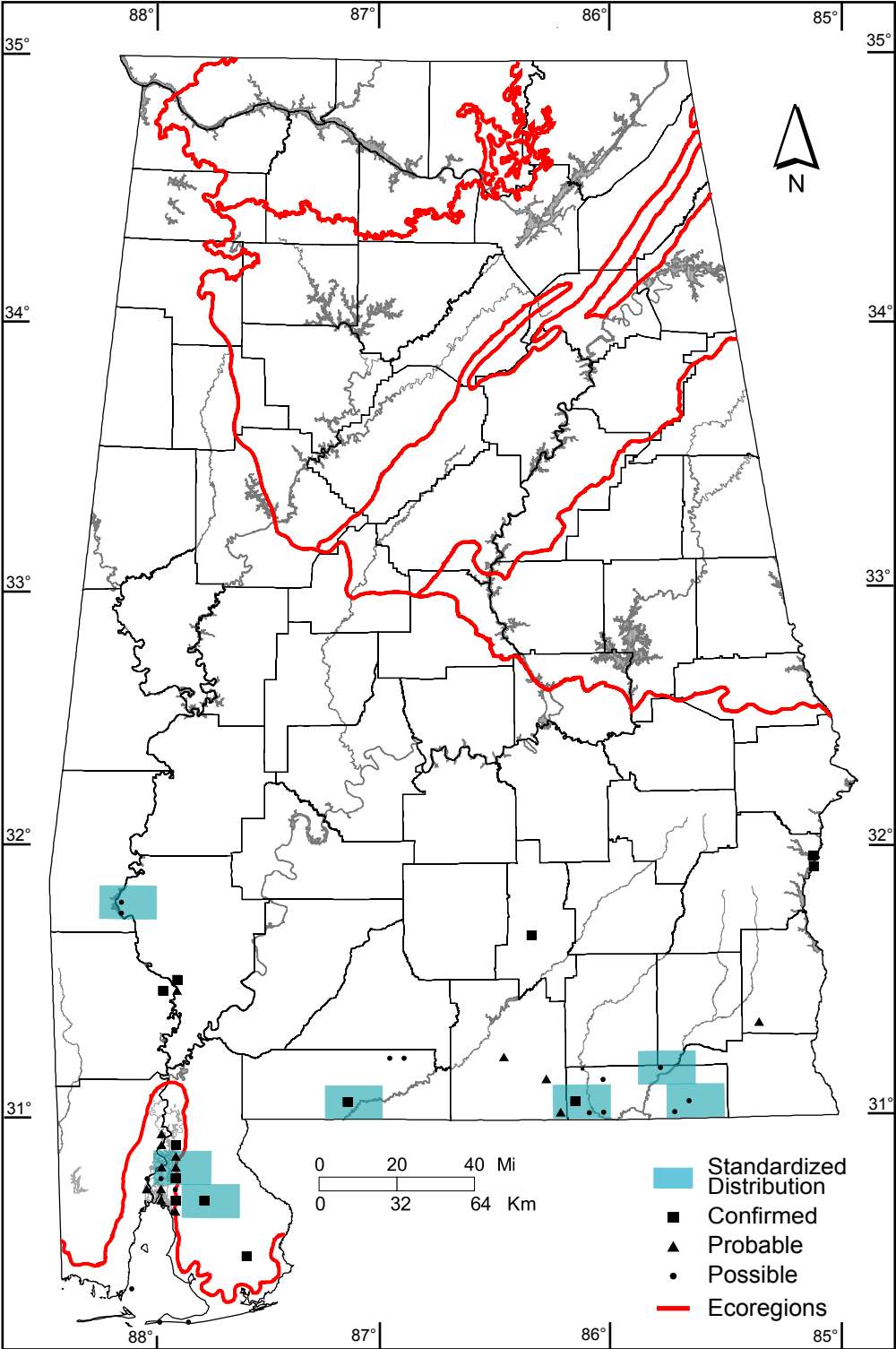
## Number of Priority Blocks in Ecoregions with Breeding Evidence

**Interior Plateau:** 0 of 52 (0%)  
**Southwestern Appalachians:** 0 of 124 (0%)  
**Ridge and Valley:** 0 of 72 (0%)  
**Piedmont:** 0 of 76 (3%)  
**Southeastern Plains:** 7 of 254 (3%)  
**Southern Coastal Plain:** 0 of 7 (0%)

## Number of Blocks with Breeding Evidence

**Total:** 42 of 5087 (1%)  
**Confirmed:** 12 of 5087 (<1%)

**Safe Dates:** May 15 - July 31



# Common Moorhen (*Gallinula chloropus*)

## Number of Priority Blocks with Breeding Evidence

**Total:** 9 of 585 (2%)

**Confirmed:** 5 (56%)

**Probable:** 1 (11%)

**Possible:** 3 (33%)

## Number of Priority Blocks in Ecoregions with Breeding Evidence

**Interior Plateau:** 0 of 52 (0%)

**Southwestern Appalachians:** 0 of 124 (0%)

**Ridge and Valley:** 0 of 72 (0%)

**Piedmont:** 0 of 76 (0%)

**Southeastern Plains:** 8 of 254 (3%)

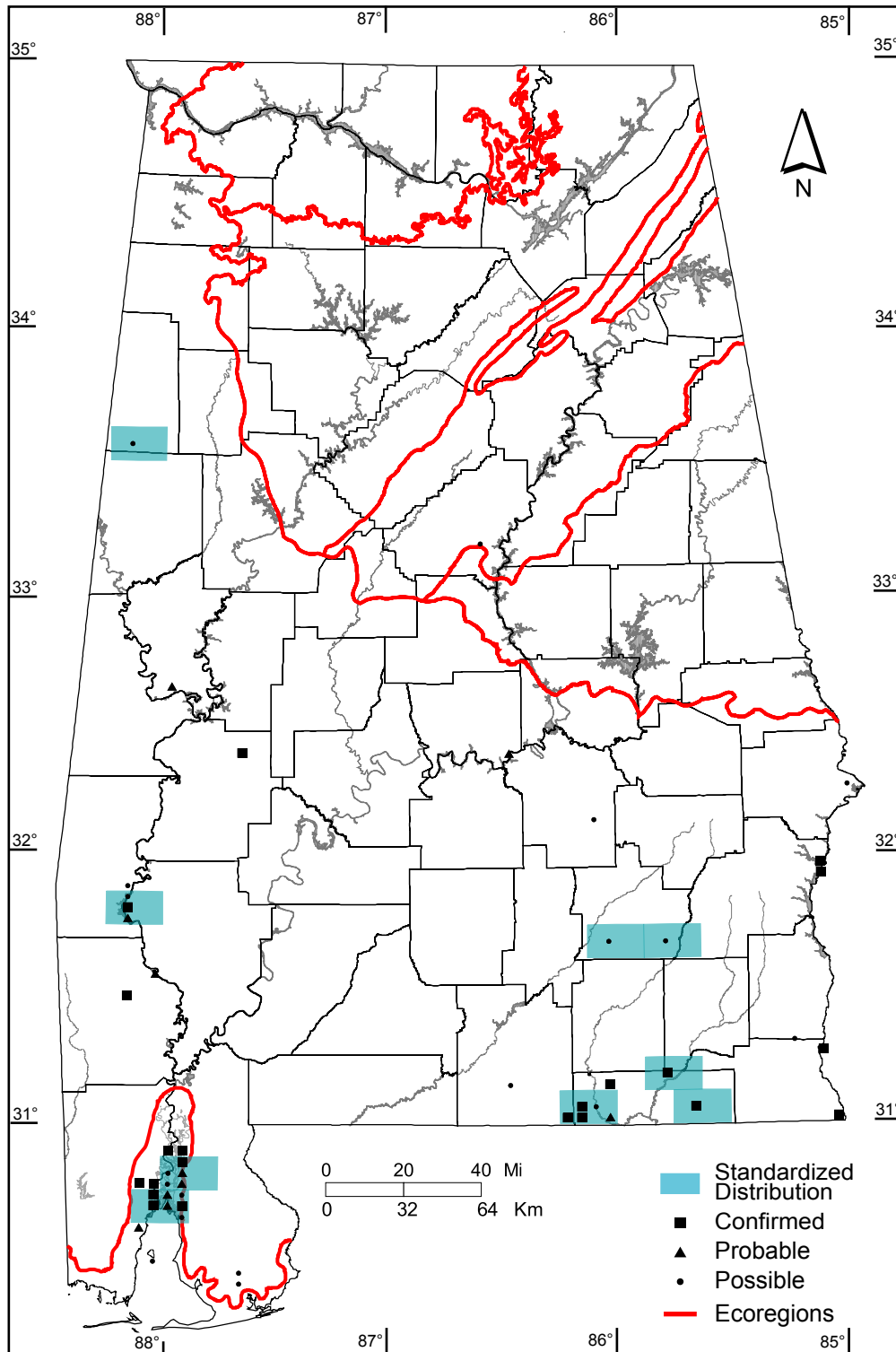
**Southern Coastal Plain:** 1 of 7 (14%)

## Number of Blocks with Breeding Evidence

**Total:** 49 of 5087 (1%)

**Confirmed:** 21 of 5087 (<1%)

**Safe Dates:** May 25 - July 31



©Alabama Breeding Bird Atlas  
All Rights Reserved

# American Coot (*Fulica americana*)

## Number of Priority Blocks with Breeding Evidence

**Total:** 2 of 585 (<1%)

**Confirmed:** 0 (0%)

**Probable:** 1 (50%)

**Possible:** 1 (50%)

## Number of Priority Blocks in Ecoregions with Breeding Evidence

**Interior Plateau:** 1 of 52 (2%)

**Southwestern Appalachians:** 1 of 124 (1%)

**Ridge and Valley:** 0 of 72 (0%)

**Piedmont:** 0 of 76 (0%)

**Southeastern Plains:** 0 of 254 (0%)

**Southern Coastal Plain:** 0 of 7 (0%)

## Number of Blocks with Breeding Evidence

**Total:** 9 of 5087 (<1%)

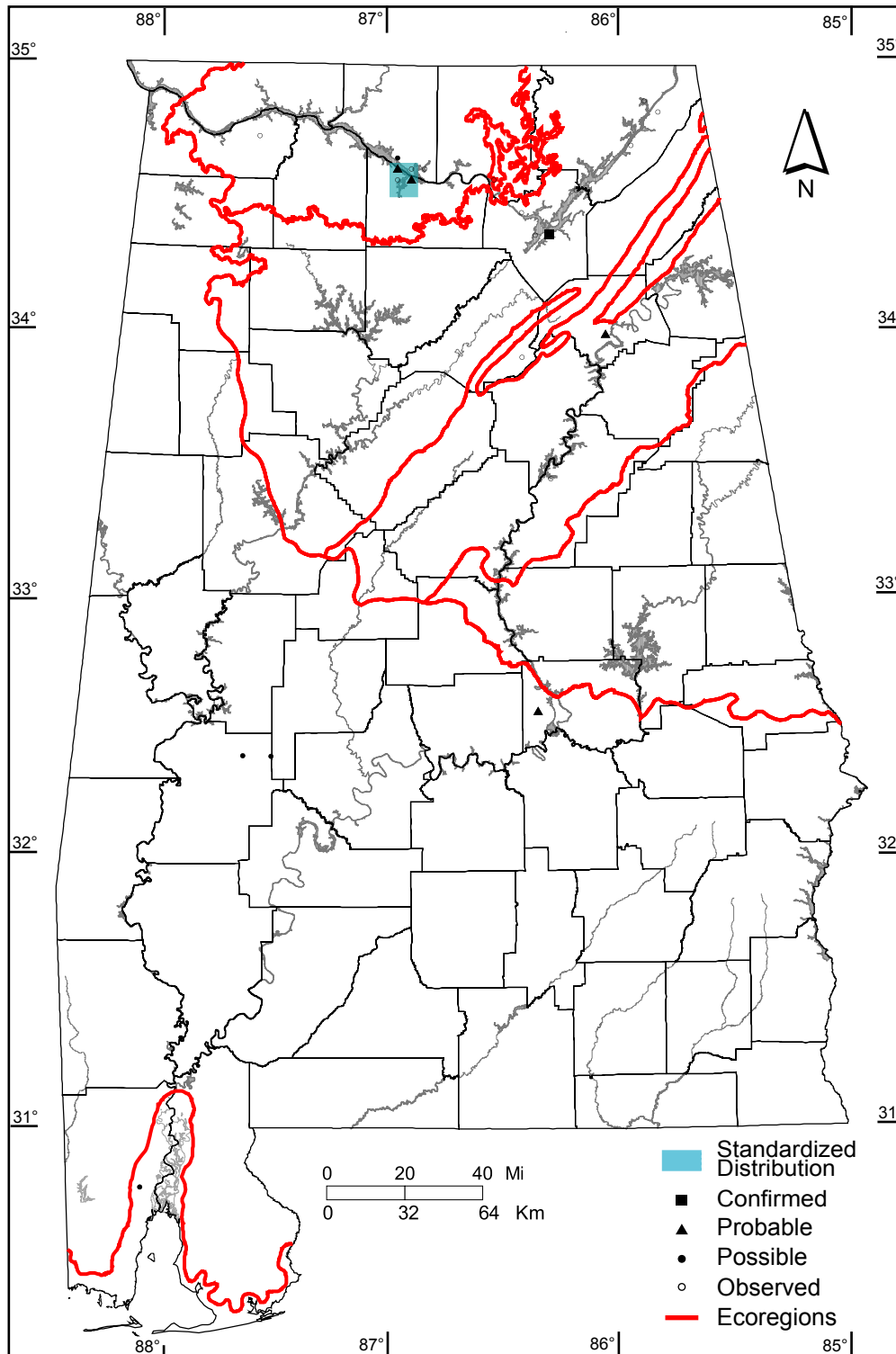
**Confirmed:** 1 of 5087 (<1%)

## Number of Blocks with Nonbreeding Records

**Observed:** 15 of 5087 (<1%)

**Safe Dates:** none

The American Coot is a species that rarely breeds in the state but may linger and sometimes remain in the state during the breeding season. Therefore, most records of single individuals received "observed" designation and no safe dates were applied.



©Alabama Breeding Bird Atlas  
All Rights Reserved

# Snowy Plover (*Charadrius alexandrinus*)

## Number of Priority Blocks with Breeding Evidence

**Total:** 0 of 585 (0%)

**Confirmed:** 0 (0%)

**Probable:** 0 (0%)

**Possible:** 0 (0%)

## Number of Priority Blocks in Ecoregions with Breeding Evidence

**Interior Plateau:** 0 of 52 (0%)

**Southwestern Appalachians:** 0 of 124 (0%)

**Ridge and Valley:** 0 of 72 (0%)

**Piedmont:** 0 of 76 (0%)

**Southeastern Plains:** 0 of 254 (0%)

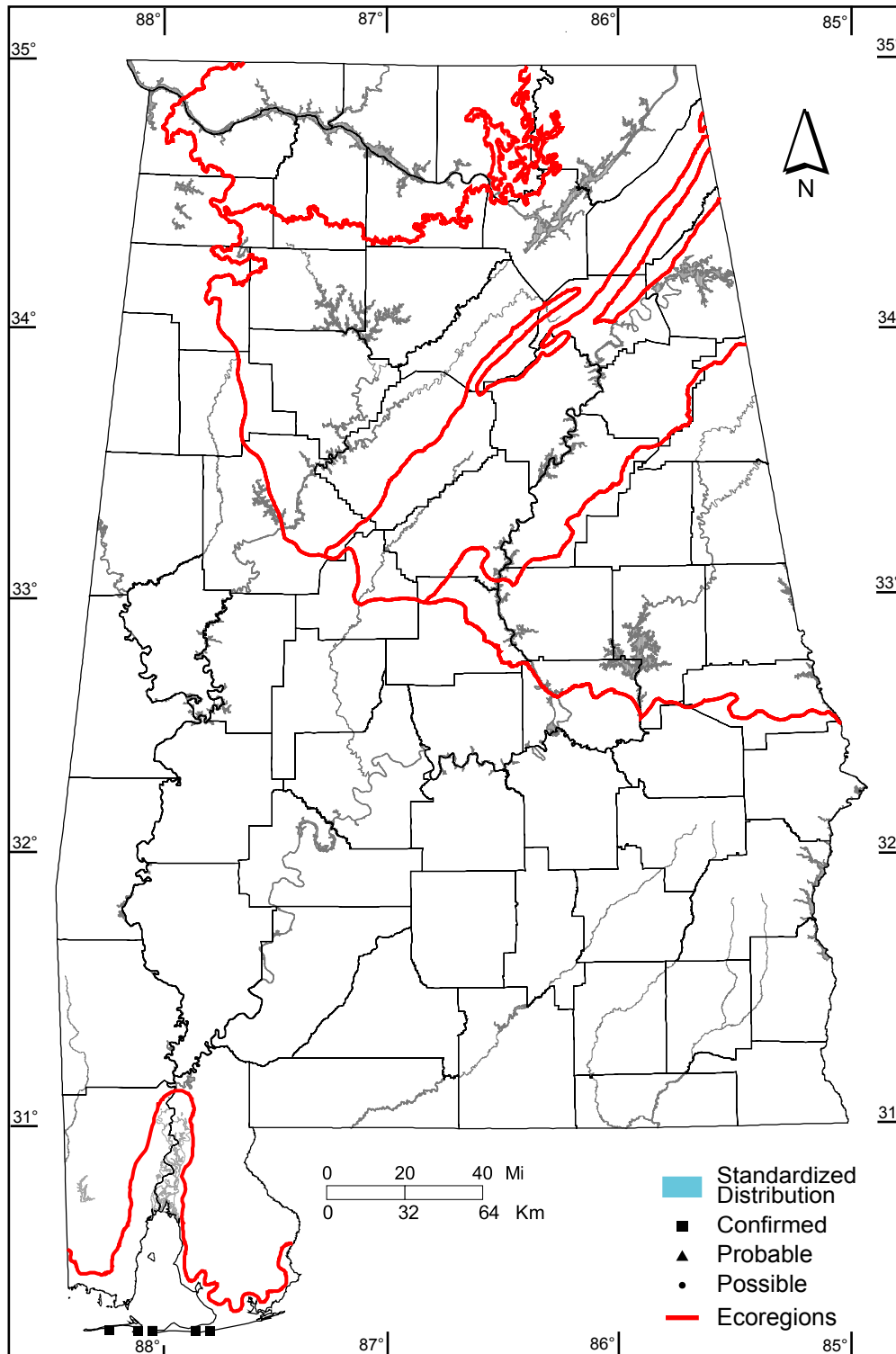
**Southern Coastal Plain:** 0 of 7 (0%)

## Number of Blocks with Breeding Evidence

**Total:** 5 of 5087 (<1%)

**Confirmed:** 5 of 5087 (<1%)

**Safe Dates:** May 15 - July 10



©Alabama Breeding Bird Atlas  
All Rights Reserved



# Wilson's Plover (*Charadrius wilsonia*)

## Number of Priority Blocks with Breeding Evidence

**Total:** 0 of 585 (0%)

**Confirmed:** 0 (0%)

**Probable:** 0 (0%)

**Possible:** 0 (0%)

## Number of Priority Blocks in Ecoregions with Breeding Evidence

**Interior Plateau:** 0 of 52 (0%)

**Southwestern Appalachians:** 0 of 124 (0%)

**Ridge and Valley:** 0 of 72 (0%)

**Piedmont:** 0 of 76 (0%)

**Southeastern Plains:** 0 of 254 (0%)

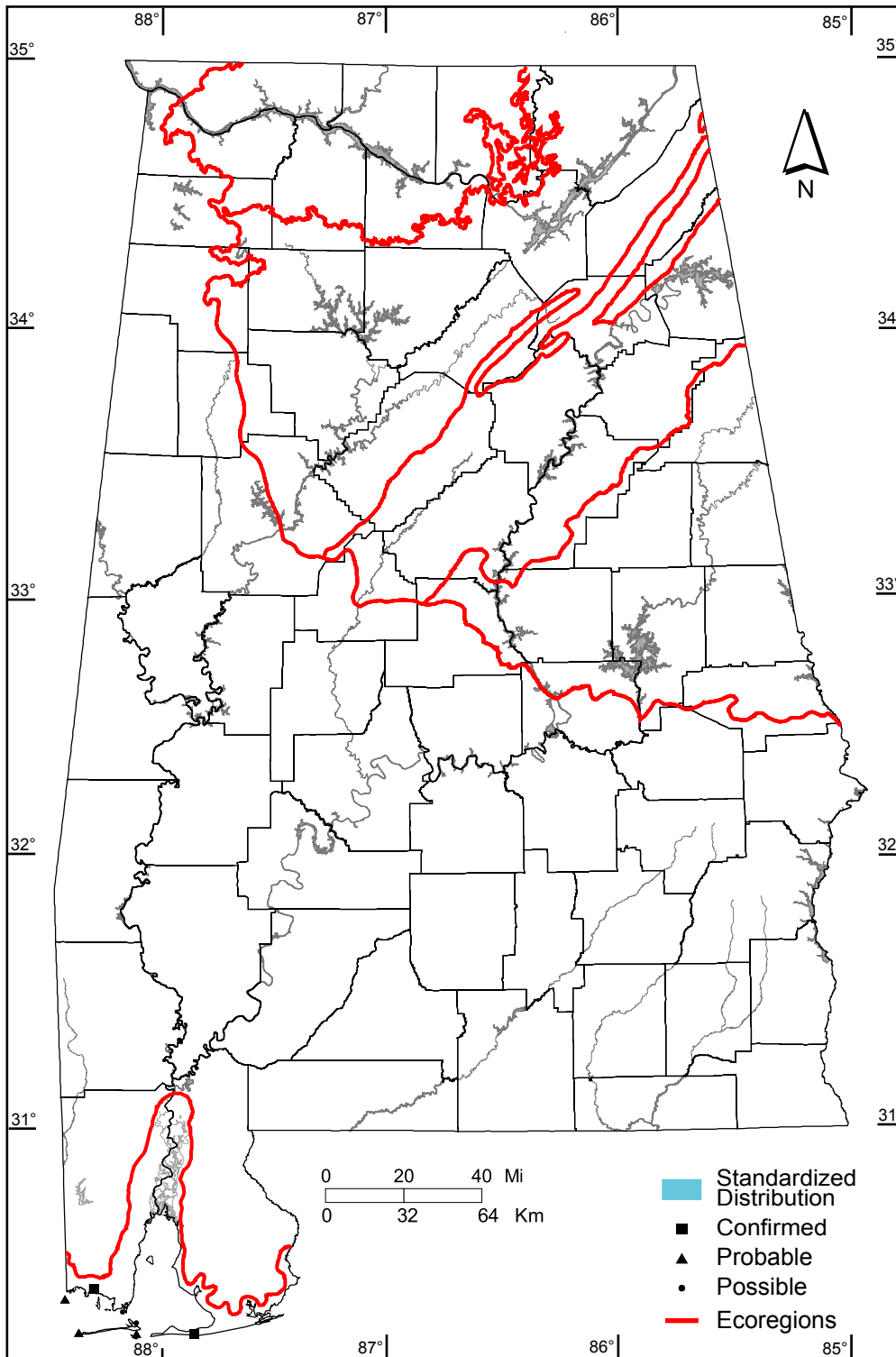
**Southern Coastal Plain:** 0 of 7 (0%)

## Number of Blocks with Breeding Evidence

**Total:** 7 of 5087 (<1%)

**Confirmed:** 2 of 5087 (<1%)

**Safe Dates:** May 15 - July 10



©Alabama Breeding Bird Atlas  
All Rights Reserved

# Killdeer (*Charadrius vociferus*)

## Number of Priority Blocks with Breeding Evidence

**Total:** 400 of 585 (68%)

**Confirmed:** 110 (28%)

**Probable:** 109 (27%)

**Possible:** 181 (45%)

## Number of Priority Blocks in Ecoregions with Breeding Evidence

**Interior Plateau:** 52 of 52 (100%)

**Southwestern Appalachians:** 90 of 124 (73%)

**Ridge and Valley:** 64 of 72 (89%)

**Piedmont:** 37 of 76 (49%)

**Southeastern Plains:** 150 of 254 (59%)

**Southern Coastal Plain:** 7 of 7 (100%)

## Number of Blocks with Breeding Evidence

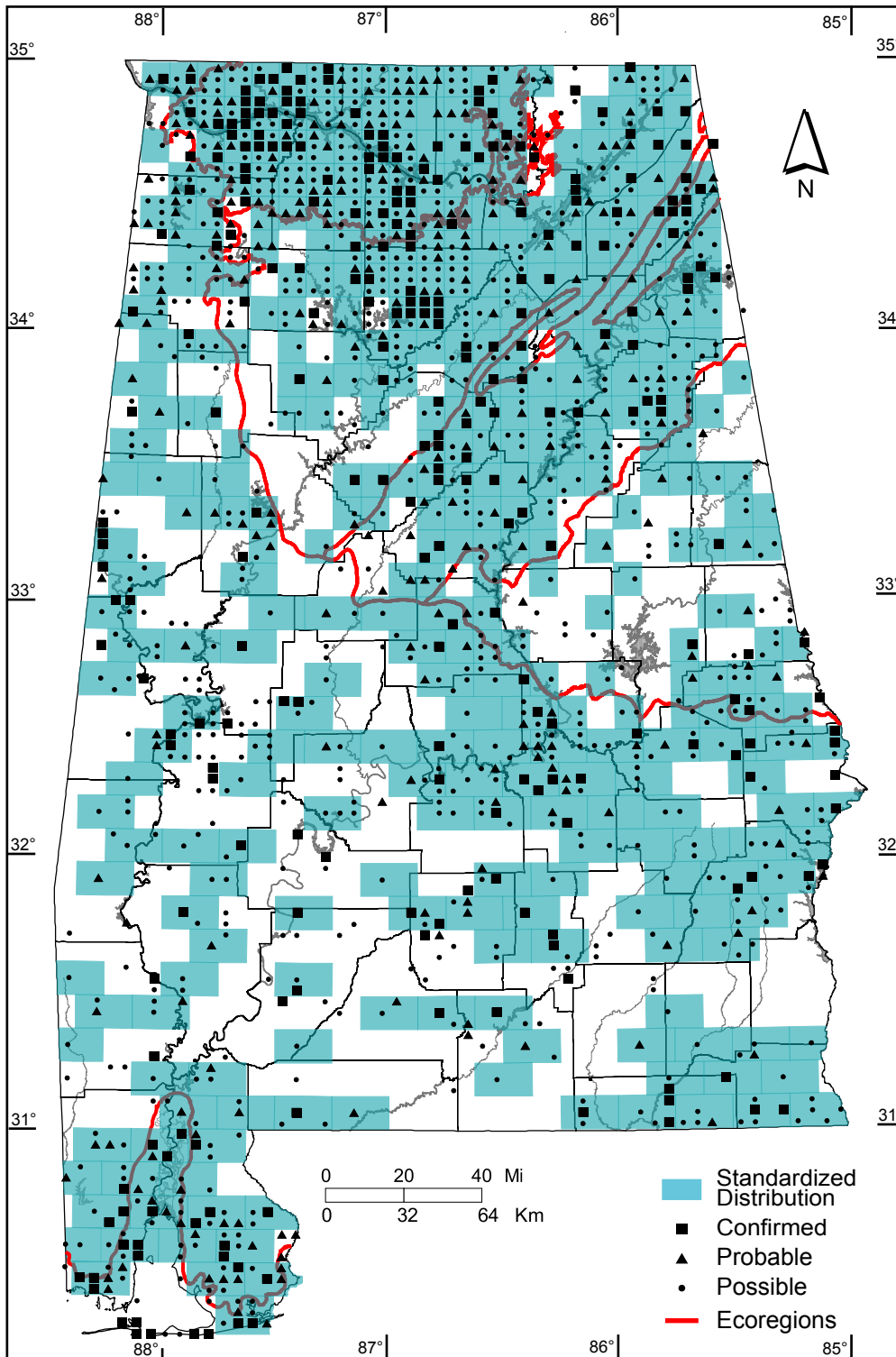
**Total:** 1333 of 5087 (26%)

**Confirmed:** 276 of 5087 (5%)

## Number of Blocks with Nonbreeding Records

**Observed:** 0 of 5087 (0%)

**Safe Dates:** April 1 - August 1



©Alabama Breeding Bird Atlas  
All Rights Reserved

# American Oystercatcher (*Haematopus palliatus*)

## Number of Priority Blocks with Breeding Evidence

**Total:** 0 of 585 (0%)

**Confirmed:** 0 (0%)

**Probable:** 0 (0%)

**Possible:** 0 (0%)

## Number of Priority Blocks in Ecoregions with Breeding Evidence

**Interior Plateau:** 0 of 52 (0%)

**Southwestern Appalachians:** 0 of 124 (0%)

**Ridge and Valley:** 0 of 72 (0%)

**Piedmont:** 0 of 76 (0%)

**Southeastern Plains:** 0 of 254 (0%)

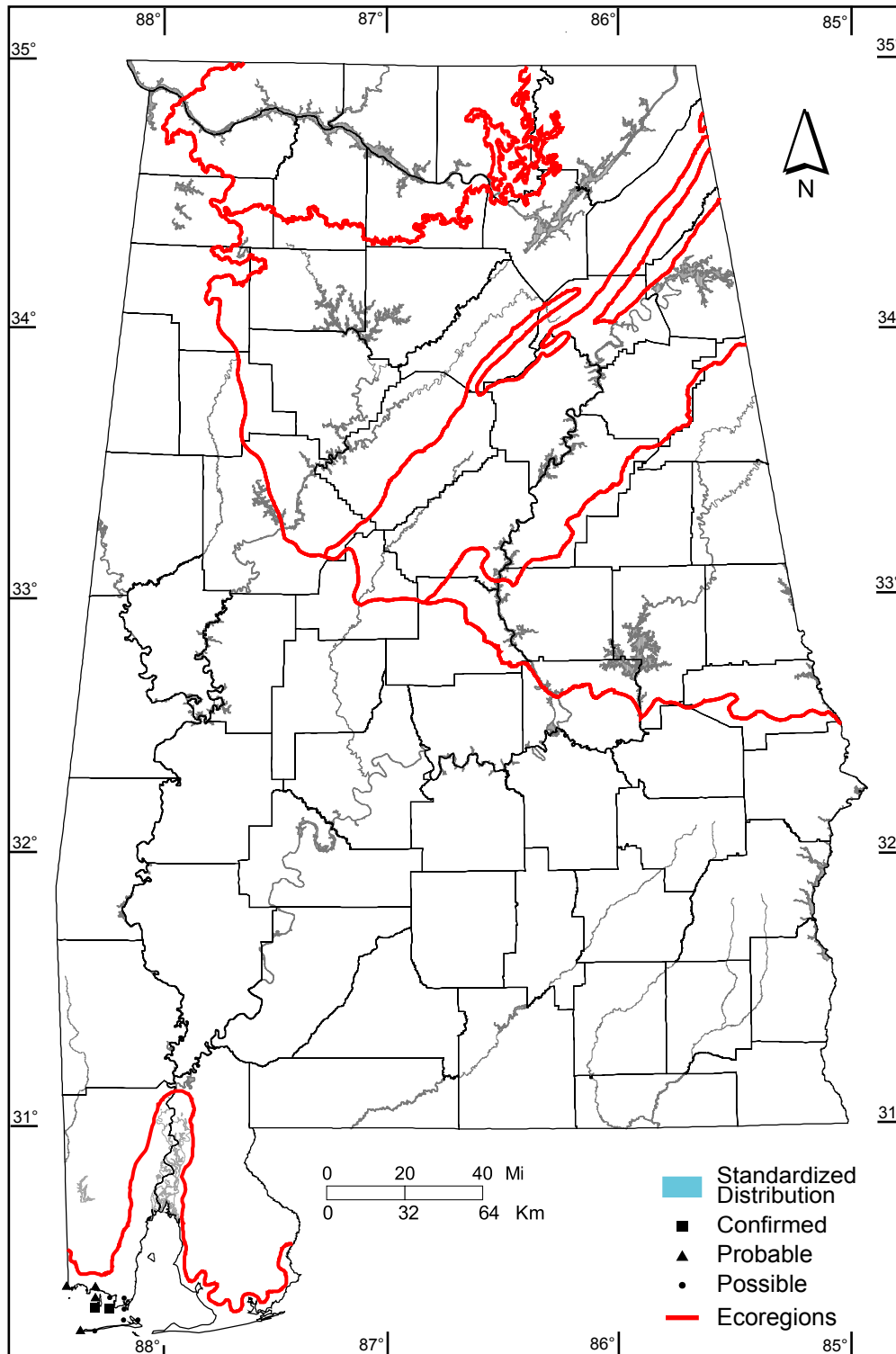
**Southern Coastal Plain:** 0 of 7 (0%)

## Number of Blocks with Breeding Evidence

**Total:** 12 of 5087 (<1%)

**Confirmed:** 2 of 5087 (<1%)

**Safe Dates:** May 15 - July 15



©Alabama Breeding Bird Atlas  
All Rights Reserved

# Black-necked Stilt (*Himantopus mexicanus*)

**Number of Priority Blocks with Breeding Evidence**

**Total:** 1 of 585 (<1%)  
**Confirmed:** 0 (0%)  
**Probable:** 1 (100%)  
**Possible:** 0 (0%)

**Number of Priority Blocks in Ecoregions with Breeding Evidence**

**Interior Plateau:** 0 of 52 (0%)  
**Southwestern Appalachians:** 0 of 124 (0%)  
**Ridge and Valley:** 0 of 72 (0%)  
**Piedmont:** 0 of 76 (0%)  
**Southeastern Plains:** 0 of 254 (0%)  
**Southern Coastal Plain:** 1 of 7 (14%)

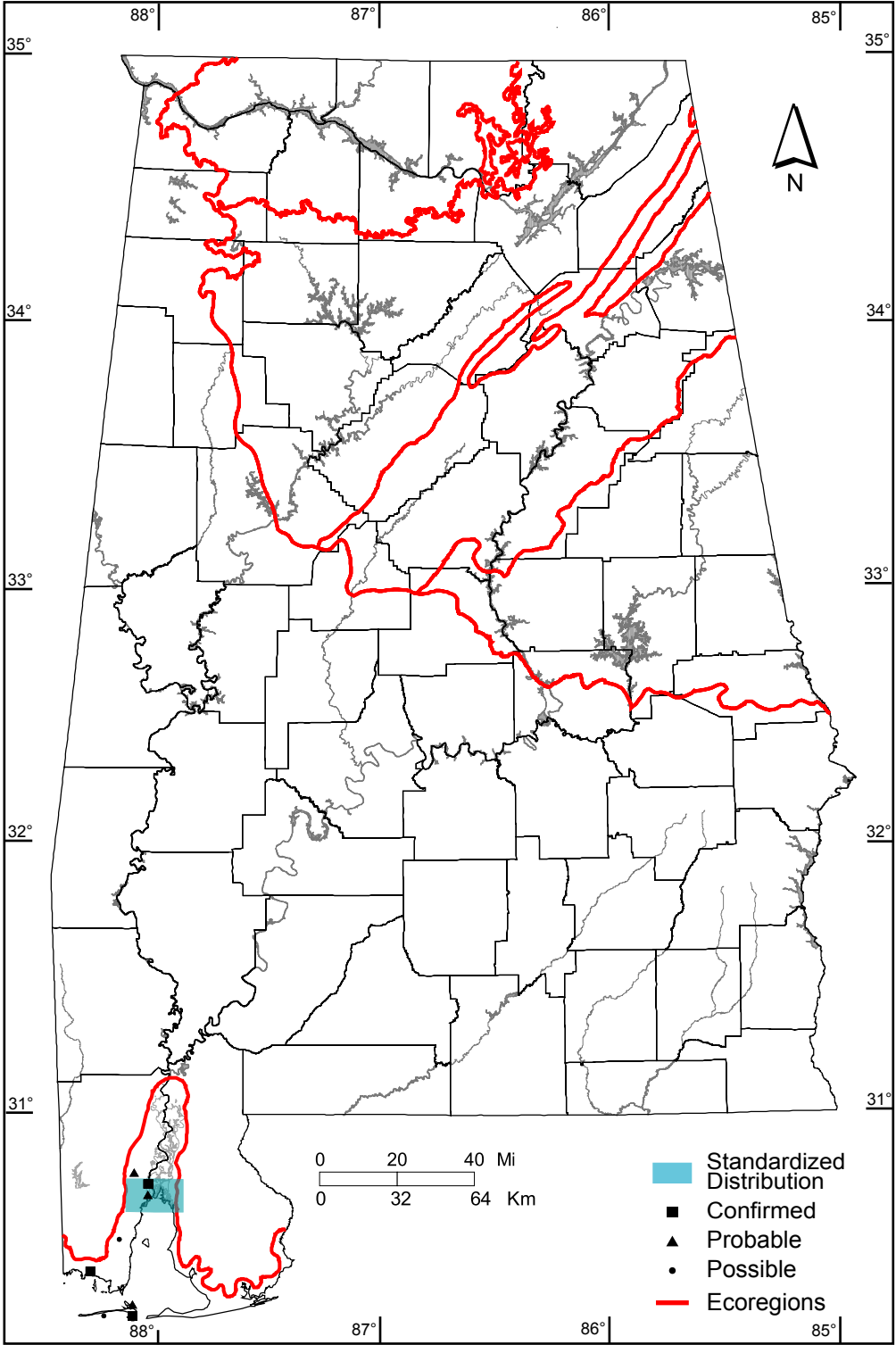
**Number of Blocks with Breeding Evidence**

**Total:** 8 of 5087 (<1%)  
**Confirmed:** 3 of 5087 (<1%)

**Number of Blocks with Nonbreeding Records**

**Observed:** 3 of 5087 (<1%)

**Safe Dates:** May 15 - July 15



# Willet (*Tringa semipalmata*)

## Number of Priority Blocks with Breeding Evidence

**Total:** 0 of 585 (0%)

**Confirmed:** 0 (0%)

**Probable:** 0 (0%)

**Possible:** 0 (0%)

## Number of Priority Blocks in Ecoregions with Breeding Evidence

**Interior Plateau:** 0 of 52 (0%)

**Southwestern Appalachians:** 0 of 124 (0%)

**Ridge and Valley:** 0 of 72 (0%)

**Piedmont:** 0 of 76 (0%)

**Southeastern Plains:** 0 of 254 (0%)

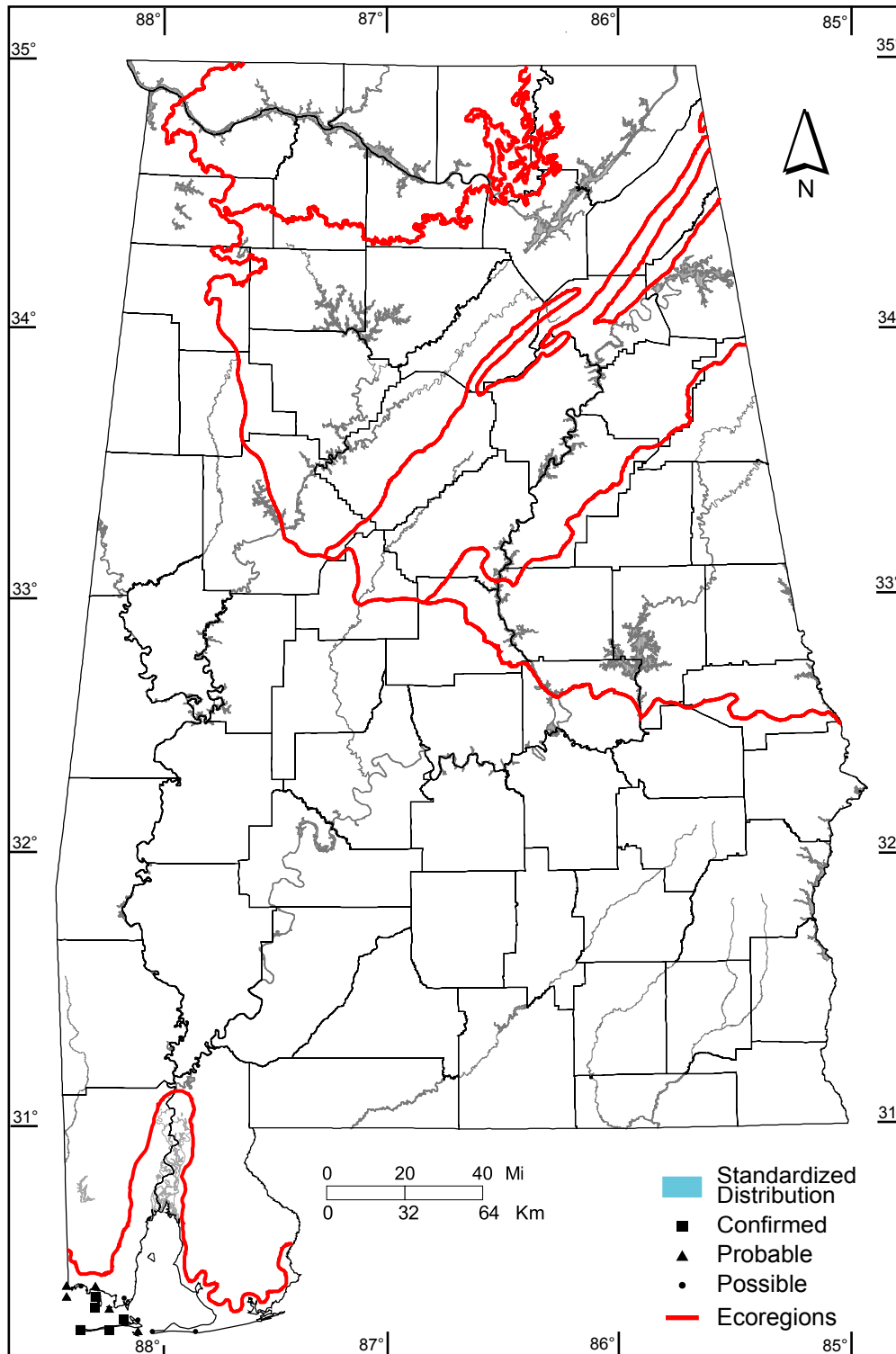
**Southern Coastal Plain:** 0 of 7 (0%)

## Number of Blocks with Breeding Evidence

**Total:** 15 of 5087 (<1%)

**Confirmed:** 5 of 5087 (<1%)

**Safe Dates:** June 1 - July 15



©Alabama Breeding Bird Atlas  
All Rights Reserved

# American Woodcock (*Scolopax minor*)

## Number of Priority Blocks with Breeding Evidence

**Total:** 50 of 585 (9%)

**Confirmed:** 1 (2%)

**Probable:** 25 (50%)

**Possible:** 24 (48%)

## Number of Priority Blocks in Ecoregions with Breeding Evidence

**Interior Plateau:** 16 of 52 (31%)

**Southwestern Appalachians:** 9 of 124 (7%)

**Ridge and Valley:** 2 of 72 (3%)

**Piedmont:** 4 of 76 (5%)

**Southeastern Plains:** 18 of 254 (7%)

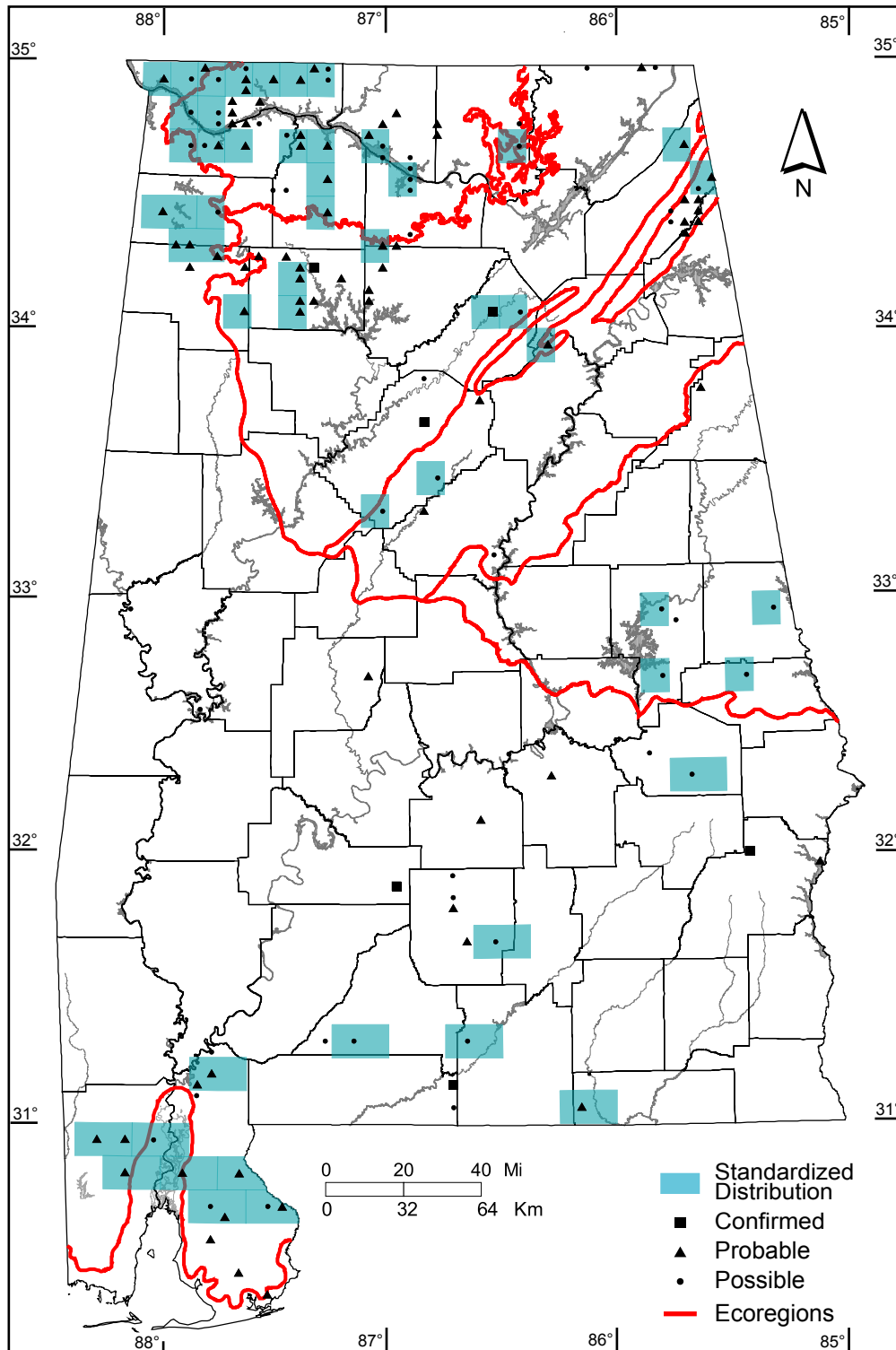
**Southern Coastal Plain:** 1 of 7 (14%)

## Number of Blocks with Breeding Evidence

**Total:** 139 of 5087 (3%)

**Confirmed:** 6 of 5087 (<1%)

**Safe Dates:** Feb 1 - July 10



# Laughing Gull (*Leucophaeus atricilla*)

## Number of Priority Blocks with Breeding Evidence

**Total:** 0 of 585 (0%)

**Confirmed:** 0 (0%)

**Probable:** 0 (0%)

**Possible:** 0 (0%)

## Number of Priority Blocks in Ecoregions with Breeding Evidence

**Interior Plateau:** 0 of 52 (0%)

**Southwestern Appalachians:** 0 of 124 (0%)

**Ridge and Valley:** 0 of 72 (0%)

**Piedmont:** 0 of 76 (0%)

**Southeastern Plains:** 0 of 254 (0%)

**Southern Coastal Plain:** 0 of 7 (0%)

## Number of Blocks with Breeding Evidence

**Total:** 3 of 5087 (<1%)

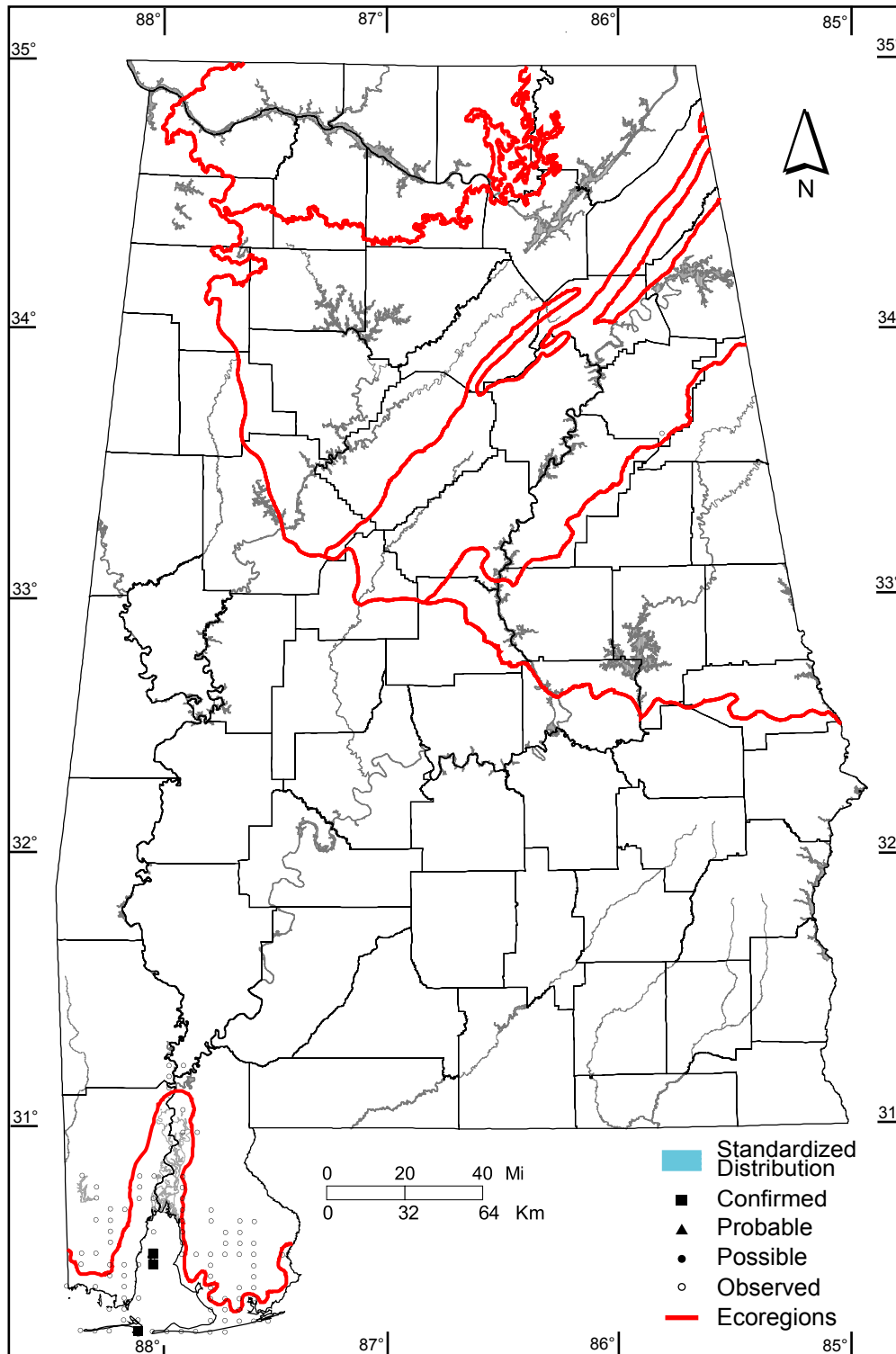
**Confirmed:** 3 of 5087 (<1%)

## Number of Blocks with Nonbreeding Records

**Observed:** 94 of 5087 (2%)

**Safe Dates:** June 1 - July 15

The Laughing Gull is a colonial nesting species and most records received "observed" designation since they represent nonbreeding wanderers or birds foraging away from colony. See Methods page.



©Alabama Breeding Bird Atlas  
All Rights Reserved

# Least Tern (*Sternula albifrons*)

## Number of Priority Blocks with Breeding Evidence

**Total:** 0 of 585 (0%)

**Confirmed:** 0 (0%)

**Probable:** 0 (0%)

**Possible:** 0 (0%)

## Number of Priority Blocks in Ecoregions with Breeding Evidence

**Interior Plateau:** 0 of 52 (0%)

**Southwestern Appalachians:** 0 of 124 (0%)

**Ridge and Valley:** 0 of 72 (0%)

**Piedmont:** 0 of 76 (0%)

**Southeastern Plains:** 0 of 254 (0%)

**Southern Coastal Plain:** 0 of 7 (0%)

## Number of Blocks with Breeding Evidence

**Total:** 20 of 5087 (<1%)

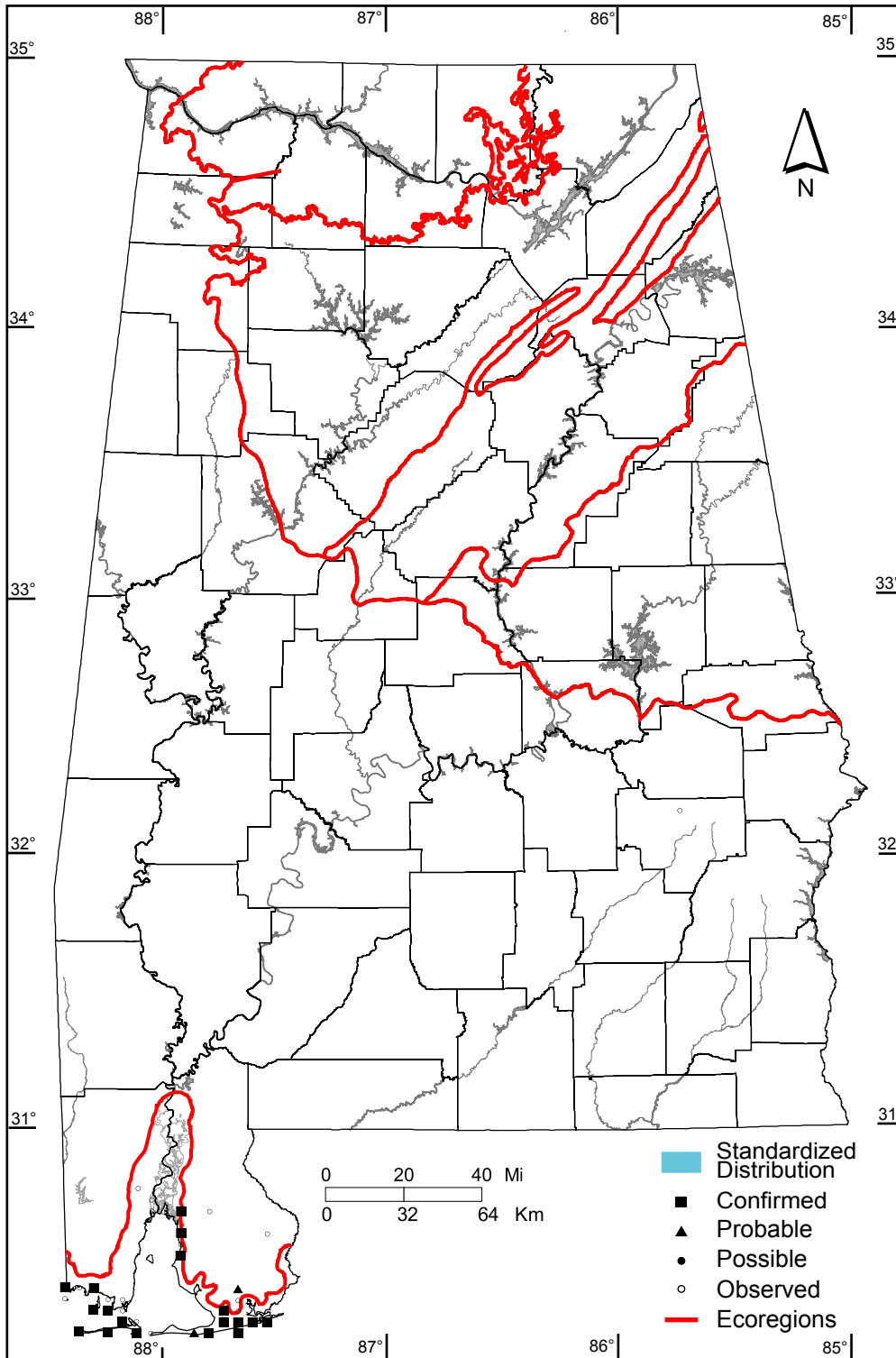
**Confirmed:** 18 of 5087 (<1%)

## Number of Blocks with Nonbreeding Records

**Observed:** 18 of 5087 (<1%)

**Safe Dates:** May 15 - July 15

The Least Tern is a colonial nesting species and some records received "observed" designation since they represent nonbreeding wanderers or birds foraging away from colony. See Methods page.



©Alabama Breeding Bird Atlas  
All Rights Reserved



# Gull-billed Tern (*Gelochelidon nilotica*)

## Number of Priority Blocks with Breeding Evidence

**Total:** 1 of 585 (<1%)

**Confirmed:** 0 (0%)

**Probable:** 0 (0%)

**Possible:** 1 (100%)

## Number of Priority Blocks in Ecoregions with Breeding Evidence

**Interior Plateau:** 0 of 52 (0%)

**Southwestern Appalachians:** 0 of 124 (0%)

**Ridge and Valley:** 0 of 72 (0%)

**Piedmont:** 0 of 76 (0%)

**Southeastern Plains:** 0 of 254 (0%)

**Southern Coastal Plain:** 1 of 7 (14%)

## Number of Blocks with Breeding Evidence

**Total:** 5 of 5087 (<1%)

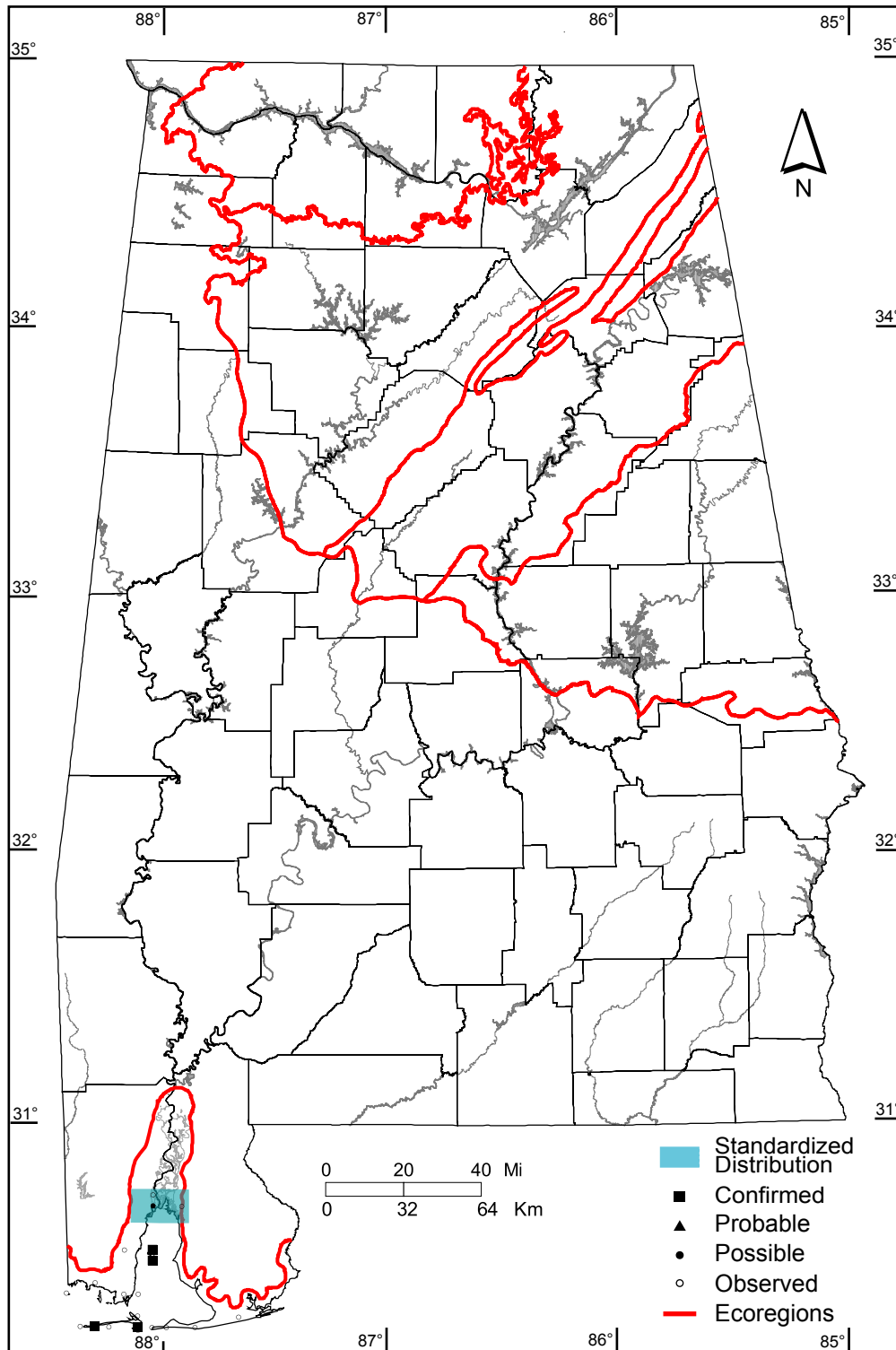
**Confirmed:** 4 of 5087 (<1%)

## Number of Blocks with Nonbreeding Records

**Observed:** 14 of 5087 (<1%)

**Safe Dates:** May 20 - July 15

The Gull-billed Tern is a colonial nesting species and some records received "observed" designation since they represent nonbreeding wanderers or birds foraging away from colony. See Methods page.



©Alabama Breeding Bird Atlas  
All Rights Reserved

# Caspian Tern

(*Hydroprogne caspia*)

## Number of Priority Blocks with Breeding Evidence

**Total:** 0 of 585 (0%)

**Confirmed:** 0 (0%)

**Probable:** 0 (0%)

**Possible:** 0 (0%)

## Number of Priority Blocks in Ecoregions with Breeding Evidence

**Interior Plateau:** 0 of 52 (0%)

**Southwestern Appalachians:** 0 of 124 (0%)

**Ridge and Valley:** 0 of 72 (0%)

**Piedmont:** 0 of 76 (0%)

**Southeastern Plains:** 0 of 254 (0%)

**Southern Coastal Plain:** 0 of 7 (0%)

## Number of Blocks with Breeding Evidence

**Total:** 5 of 5087 (<1%)

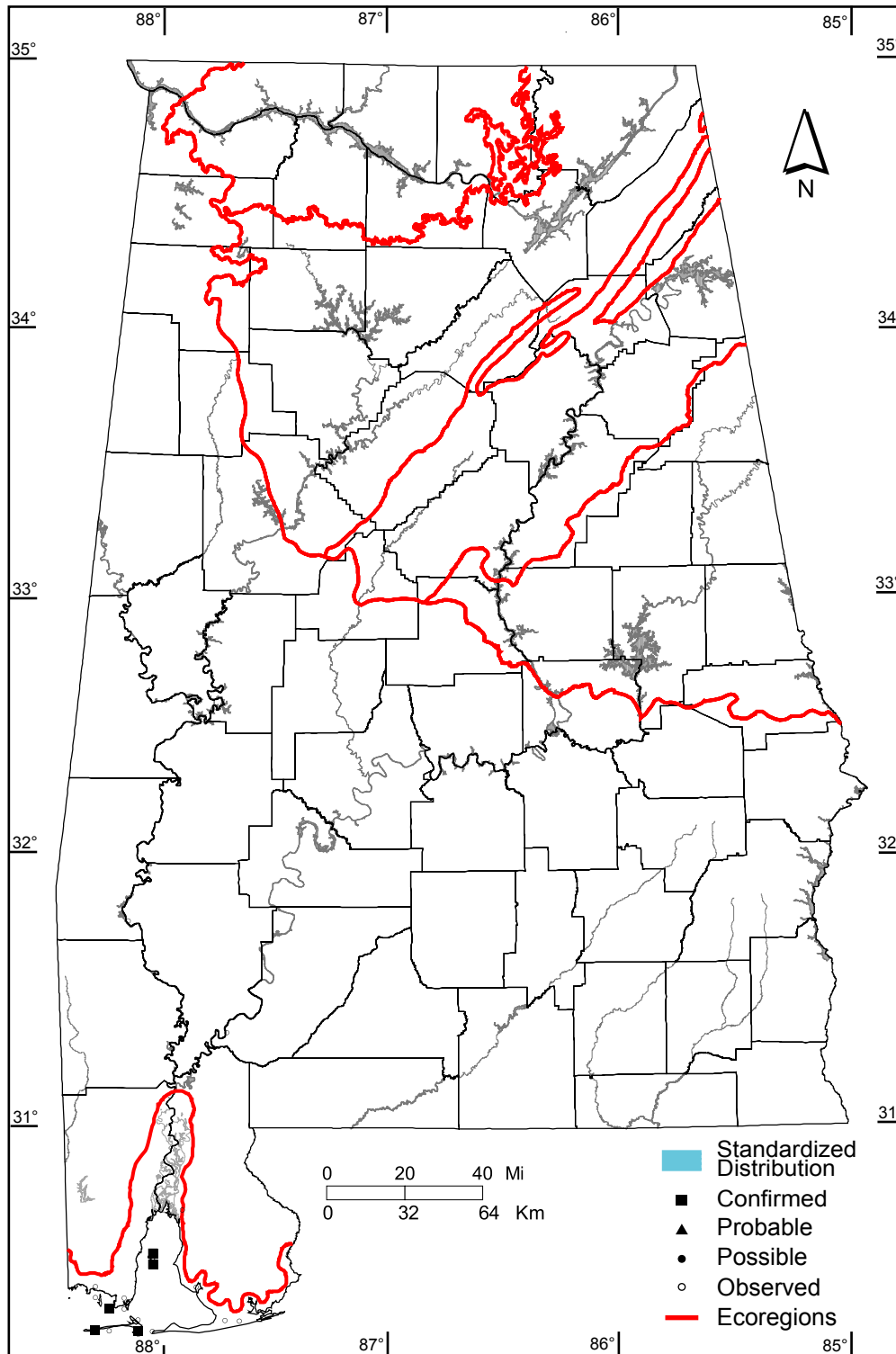
**Confirmed:** 5 of 5087 (<1%)

## Number of Blocks with Nonbreeding Records

**Observed:** 13 of 5087 (<1%)

**Safe Dates:** June 1 - July 15

The Caspian Tern is a colonial nesting species and some records received "observed" designation since they represent nonbreeding wanderers or birds foraging away from colony. See Methods page.



©Alabama Breeding Bird Atlas  
All Rights Reserved

# Common Tern (*Sterna hirundo*)

## Number of Priority Blocks with Breeding Evidence

**Total:** 0 of 585 (0%)

**Confirmed:** 0 (0%)

**Probable:** 0 (0%)

**Possible:** 0 (0%)

## Number of Priority Blocks in Ecoregions with Breeding Evidence

**Interior Plateau:** 0 of 52 (0%)

**Southwestern Appalachians:** 0 of 124 (0%)

**Ridge and Valley:** 0 of 72 (0%)

**Piedmont:** 0 of 76 (0%)

**Southeastern Plains:** 0 of 254 (0%)

**Southern Coastal Plain:** 0 of 7 (0%)

## Number of Blocks with Breeding Evidence

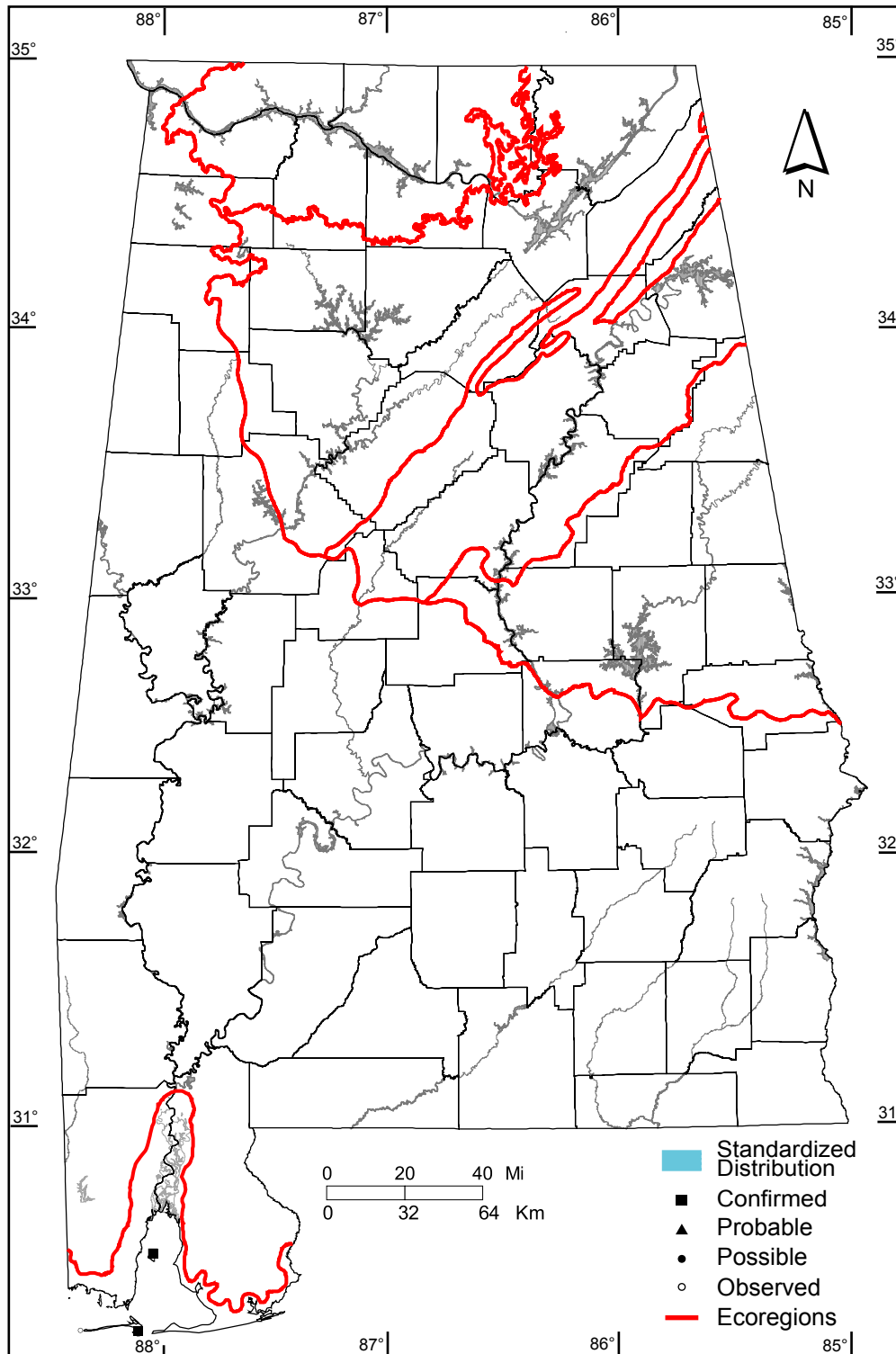
**Total:** 2 of 5087 (<1%)

**Confirmed:** 2 of 5087 (<1%)

## Number of Blocks with Nonbreeding Records

**Observed:** 1 of 5087 (<1%)

**Safe Dates:** June 1 - June 30



©Alabama Breeding Bird Atlas  
All Rights Reserved

# Royal Tern (*Thalasseus maximus*)

## Number of Priority Blocks with Breeding Evidence

**Total:** 0 of 585 (0%)

**Confirmed:** 0 (0%)

**Probable:** 0 (0%)

**Possible:** 0 (0%)

## Number of Priority Blocks in Ecoregions with Breeding Evidence

**Interior Plateau:** 0 of 52 (0%)

**Southwestern Appalachians:** 0 of 124 (0%)

**Ridge and Valley:** 0 of 72 (0%)

**Piedmont:** 0 of 76 (0%)

**Southeastern Plains:** 0 of 254 (0%)

**Southern Coastal Plain:** 0 of 7 (0%)

## Number of Blocks with Breeding Evidence

**Total:** 6 of 5087 (<1%)

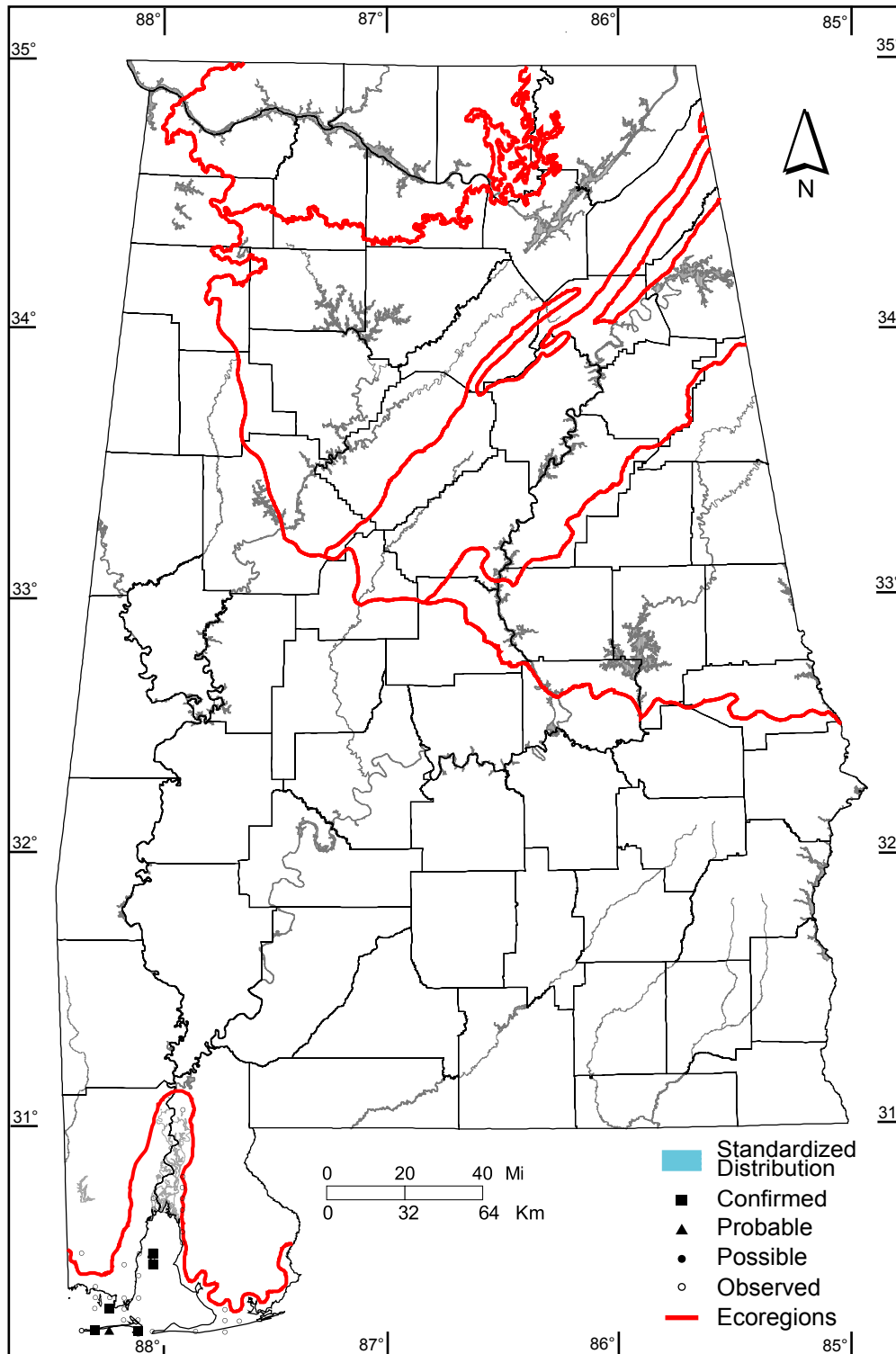
**Confirmed:** 5 of 5087 (<1%)

## Number of Blocks with Nonbreeding Records

**Observed:** 30 of 5087 (<1%)

**Safe Dates:** June 1 - July 15

The Royal Tern is a colonial nesting species and some records received "observed" designation since they represent nonbreeding wanderers or birds foraging away from colony. See Methods page.



©Alabama Breeding Bird Atlas  
All Rights Reserved

# Sandwich Tern

(*Thalasseus sandvicensis*)

## Number of Priority Blocks with Breeding Evidence

**Total:** 0 of 585 (0%)

**Confirmed:** 0 (0%)

**Probable:** 0 (0%)

**Possible:** 0 (0%)

## Number of Priority Blocks in Ecoregions with Breeding Evidence

**Interior Plateau:** 0 of 52 (0%)

**Southwestern Appalachians:** 0 of 124 (0%)

**Ridge and Valley:** 0 of 72 (0%)

**Piedmont:** 0 of 76 (0%)

**Southeastern Plains:** 0 of 254 (0%)

**Southern Coastal Plain:** 0 of 7 (0%)

## Number of Blocks with Breeding Evidence

**Total:** 5 of 5087 (<1%)

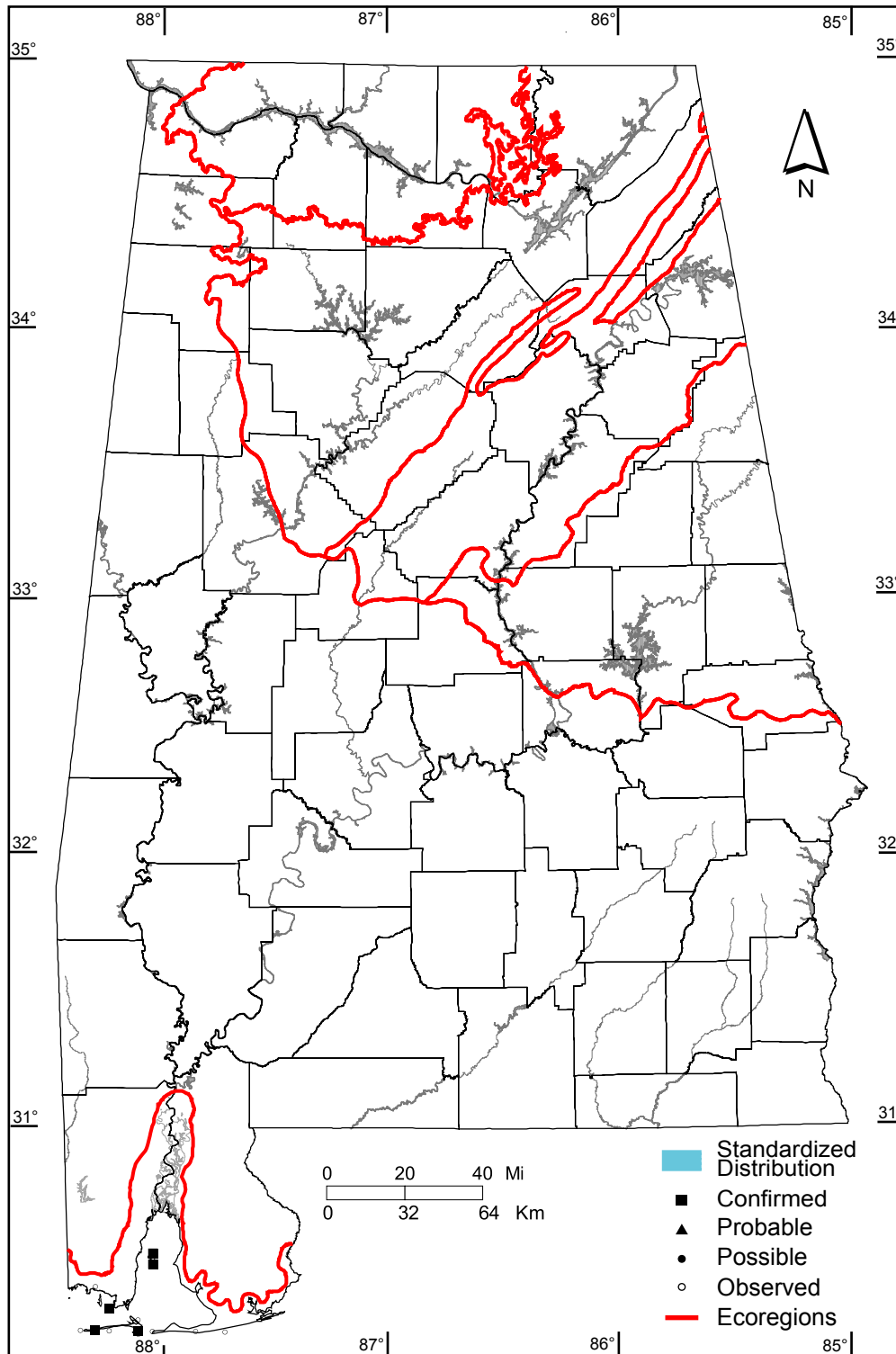
**Confirmed:** 5 of 5087 (<1%)

## Number of Blocks with Nonbreeding Records

**Observed:** 7 of 5087 (<1%)

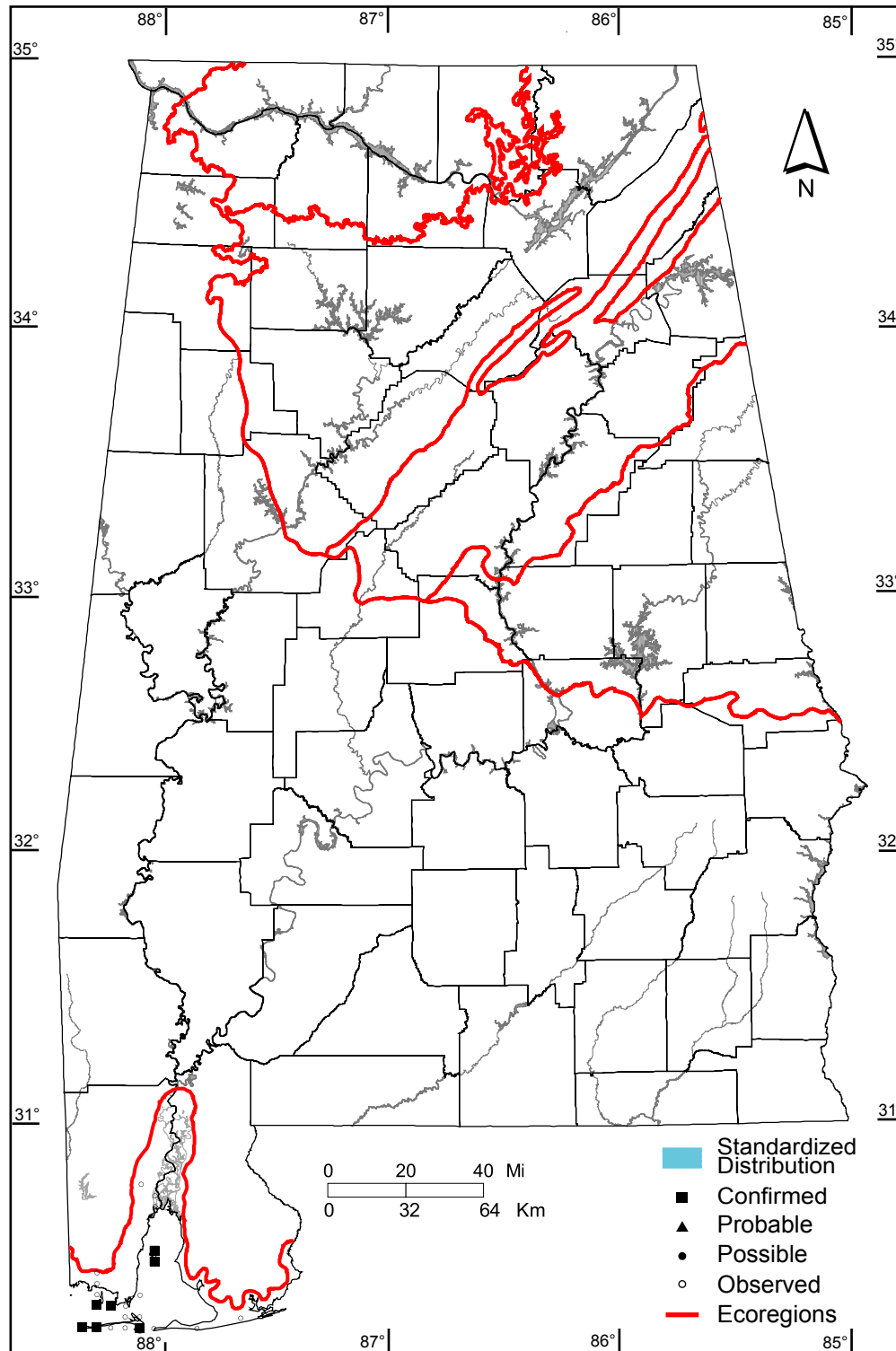
**Safe Dates:** June 1 - July 15

The Sandwich Tern is a colonial nesting species and some records received "observed" designation since they represent nonbreeding wanderers or birds foraging away from colony. See Methods page.



©Alabama Breeding Bird Atlas  
All Rights Reserved

# Black Skimmer (*Rynchops niger*)



## Number of Priority Blocks with Breeding Evidence

**Total:** 0 of 585 (0%)

**Confirmed:** 0 (0%)

**Probable:** 0 (0%)

**Possible:** 0 (0%)

## Number of Priority Blocks in Ecoregions with Breeding Evidence

**Interior Plateau:** 0 of 52 (0%)

**Southwestern Appalachians:** 0 of 124 (0%)

**Ridge and Valley:** 0 of 72 (0%)

**Piedmont:** 0 of 76 (0%)

**Southeastern Plains:** 0 of 254 (0%)

**Southern Coastal Plain:** 0 of 7 (0%)

## Number of Blocks with Breeding Evidence

**Total:** 7 of 5087 (<1%)

**Confirmed:** 7 of 5087 (<1%)

## Number of Blocks with Nonbreeding Records

**Observed:** 15 of 5087 (<1%)

**Safe Dates:** May 15 - July 15

The Black Skimmer is a colonial nesting species and some records received "observed" designation since they represent nonbreeding wanderers or birds foraging away from colony. See Methods page.



©Alabama Breeding Bird Atlas  
All Rights Reserved